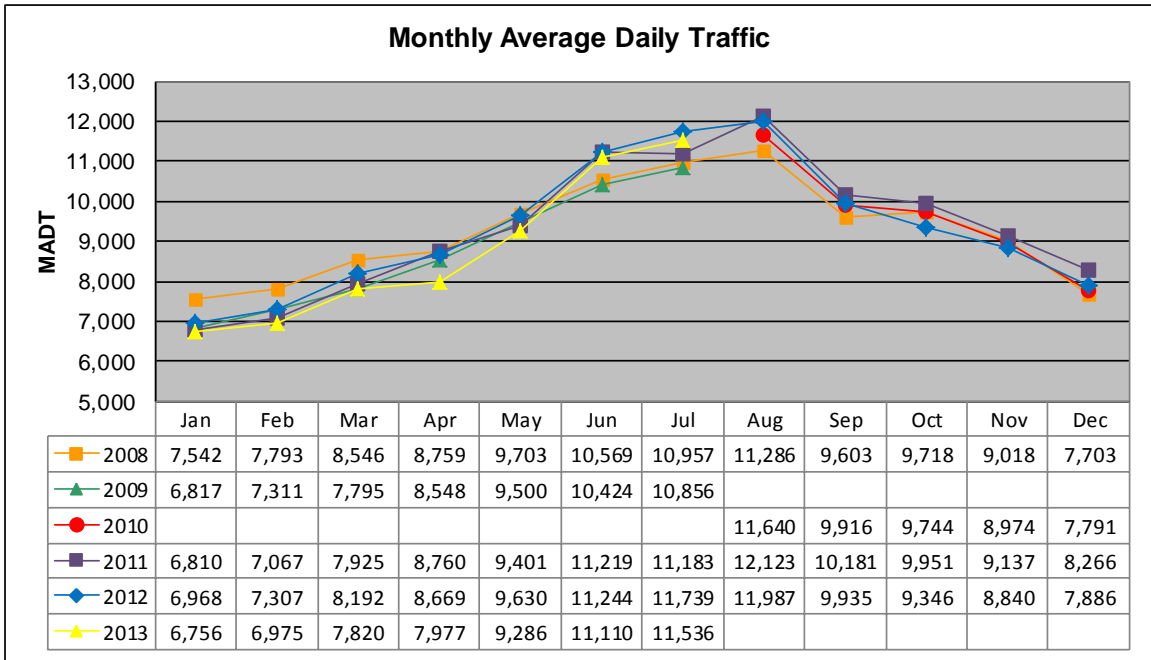


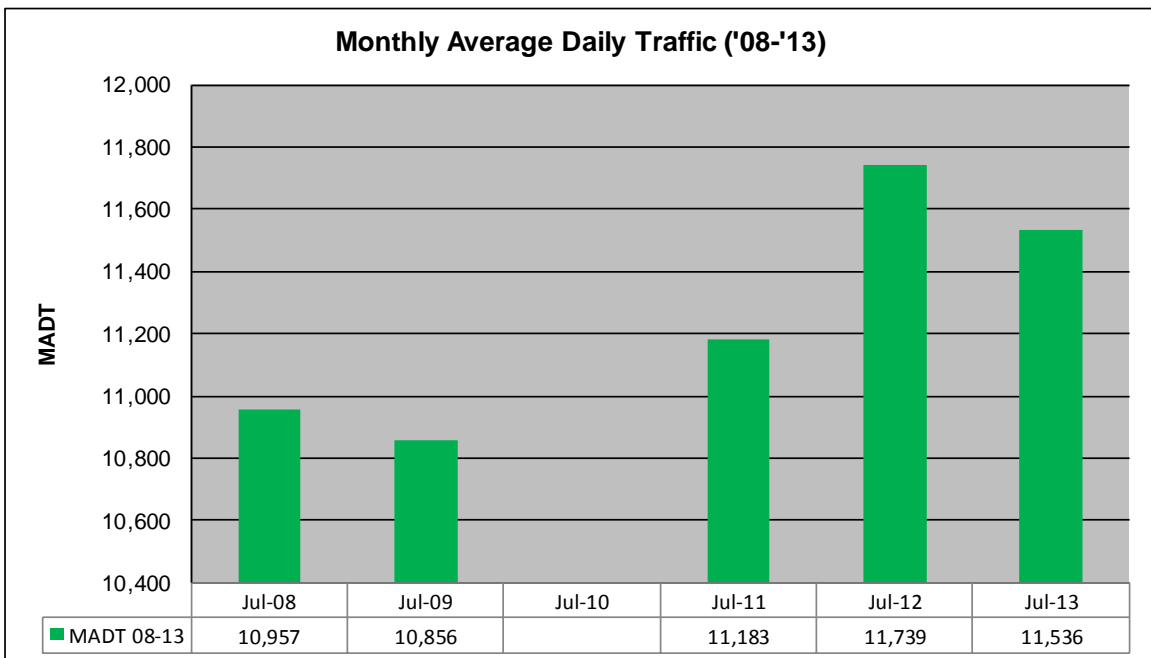
# MONTHLY REPORT, STATION NO. 227 (ATR)

## JULY 2013

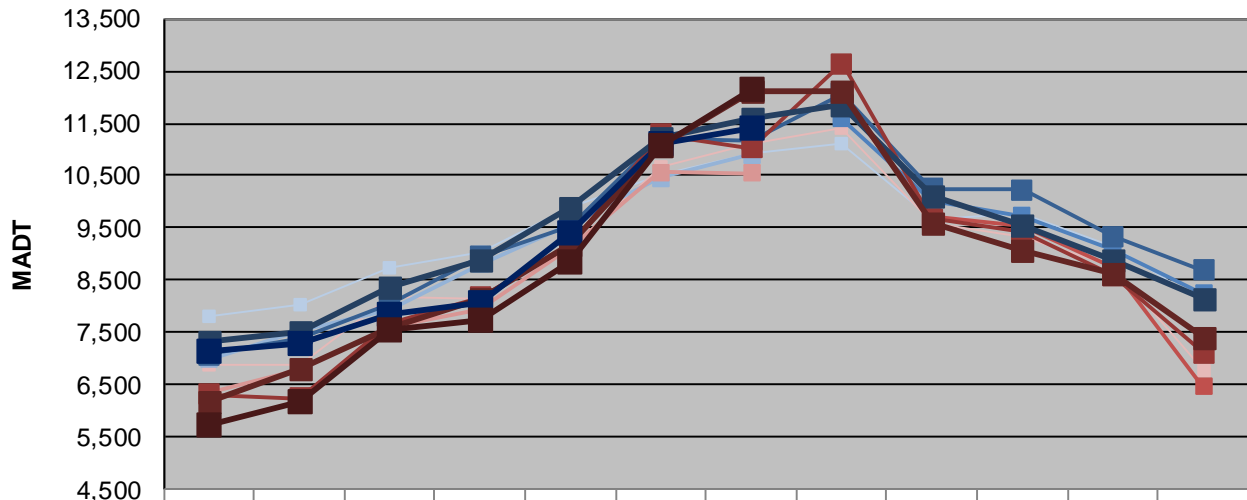
Station Measurement: VOLUME/SPEED/CLASS		
Route: I-90	Route Direction: E/W	Lanes: 4
County: Freeborn		Closest City: Albert Lea
Functional Class: Rural Principal Arterial - Interstate		
Location: SW OF TH13, W OF ALBERT LEA		
Ref Post: 153+00.700	True Mile: 152.36	Sequence No. 9833
<b>Volume: 357,603</b>		<b>MADT: 11,536</b>
<b>Weekday (M-F) MADT: 11,392</b>		<b>Weekend (Sa-Su) MADT: 12,146</b>



Note: No data August 2009 to July 2010 due to sensors destroyed by construction



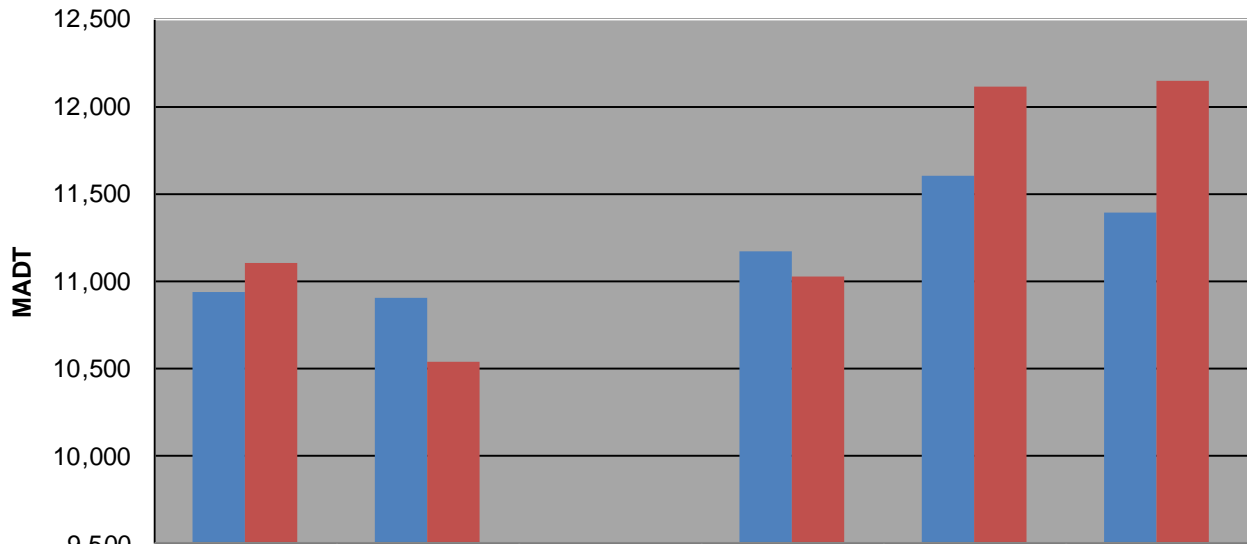
### Weekday (WD)/Weekend (WE) Monthly Average Daily Traffic



	Jan	Feb	Mar	Apr	May	Jun	Jul	Aug	Sep	Oct	Nov	Dec
'08 WD	7,816	8,048	8,744	9,024	9,876	10,528	10,938	11,112	9,674	9,794	9,140	8,052
'08 WE	6,876	6,892	8,196	8,152	9,106	10,674	11,106	11,394	9,576	9,318	8,776	6,786
'09 WD	6,992	7,522	7,952	8,802	9,588	10,446	10,904					
'09 WE	6,340	6,788	7,598	7,924	9,124	10,558	10,540					
'10 WD								11,584	10,016	9,730	9,108	8,252
'10 WE								11,972	9,722	9,540	8,756	6,470
'11 WD	7,076	7,382	8,064	8,946	9,534	11,200	11,170	12,060	10,250	10,234	9,336	8,688
'11 WE	6,318	6,252	7,664	8,172	9,148	11,296	11,022	12,646	9,680	9,412	8,596	7,124
'12 WD	7,316	7,518	8,374	8,876	9,870	11,220	11,598	11,864	10,112	9,544	8,874	8,144
'12 WE	6,160	6,822	7,582	8,162	9,182	11,086	12,118	12,102	9,586	9,086	8,616	7,416
'13 WD	7,150	7,286	7,854	8,080	9,400	11,120	11,392					
'13 WE	5,736	6,196	7,554	7,732	8,862	11,092	12,146					

Note: 'Weekday' defined as Monday-Friday, 'Weekend' defined as Saturday-Sunday

### Weekday/Weekend Monthly Average Daily Traffic ('08-'13)



	Jul-08	Jul-09	Jul-10	Jul-11	Jul-12	Jul-13
Weekday	10,938	10,904		11,170	11,598	11,392
Weekend	11,106	10,540		11,022	12,118	12,146