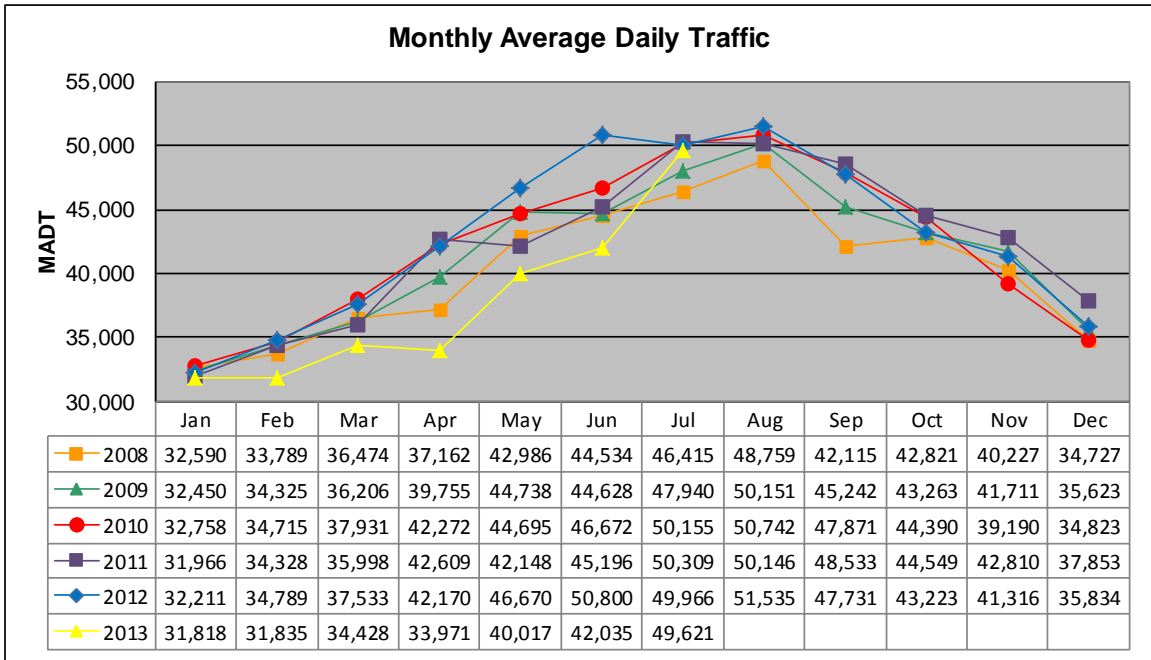


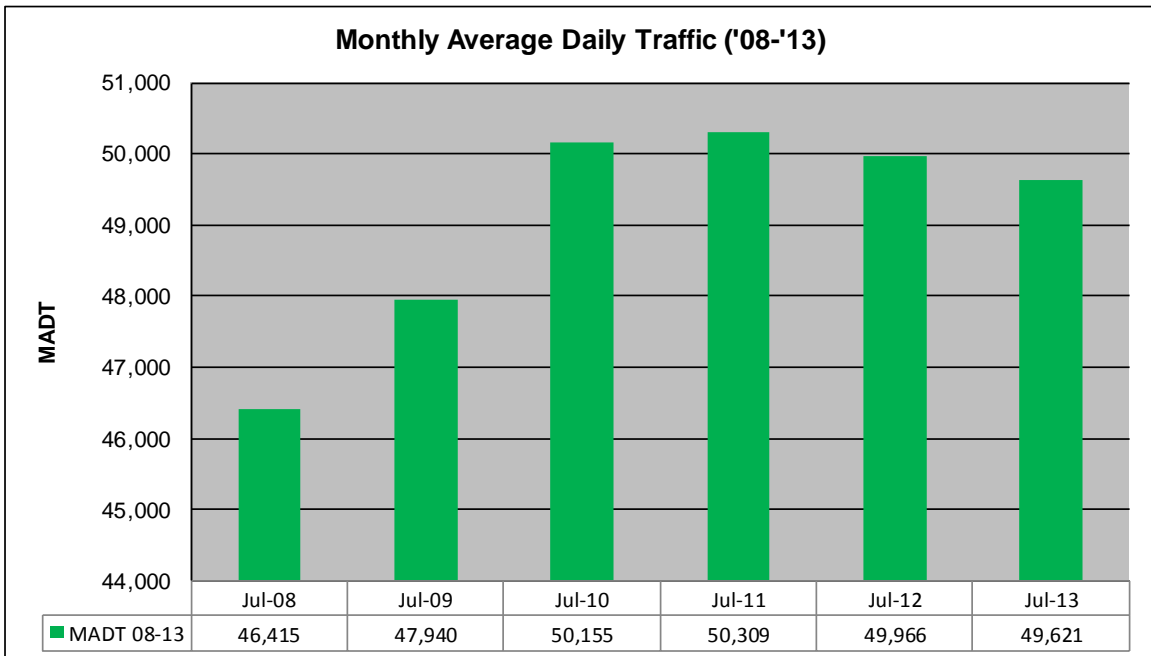
MONTHLY REPORT, STATION NO. 200 (ATR)

JULY 2013

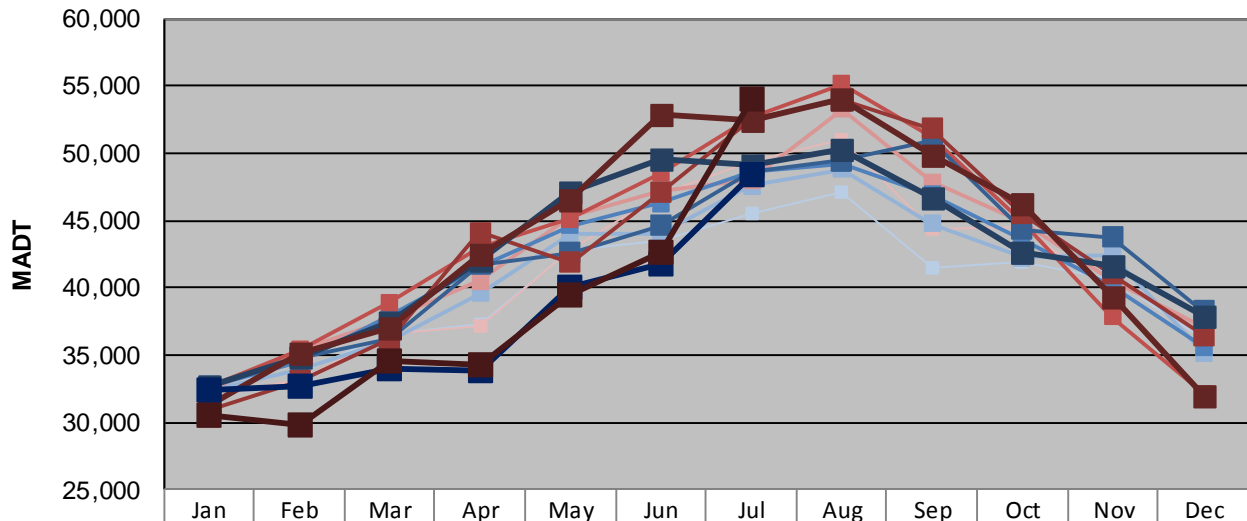
Station Measurement: VOLUME/SPEED/CLASS		
Route: I-94	Route Direction: N/S	Lanes: 4
County: Wright		Closest City: Clearwater
Functional Class: Rural Principal Arterial - Interstate		
Location: 1.1 MI NW OF CSAH8, SE OF CLEARWATER		
Ref Post: 182+00.200	True Mile: 183.084	Sequence No. 6781
Volume: 1,538,249		MADT: 49,621
Weekday (M-F) MADT: 48,420		Weekend (Sa-Su) MADT: 53,968



Note: Decrease in traffic April to June 2013 due to construction on I-94



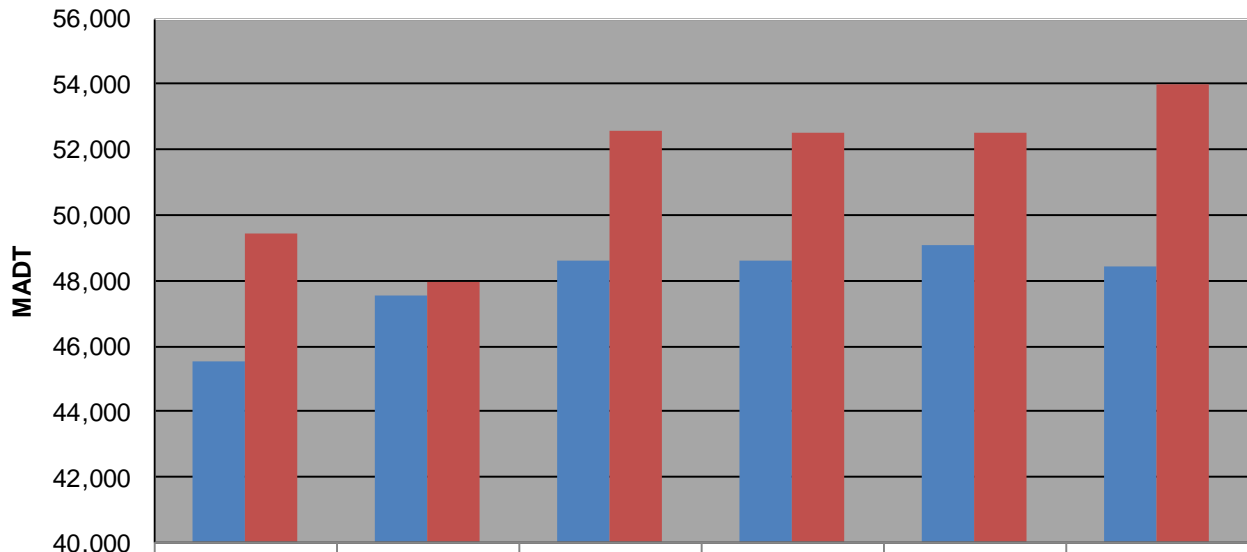
Weekday (WD)/Weekend (WE) Monthly Average Daily Traffic



	Jan	Feb	Mar	Apr	May	Jun	Jul	Aug	Sep	Oct	Nov	Dec
'08 WD	32,984	33,690	36,532	37,318	42,742	43,516	45,532	47,174	41,532	41,880	40,556	36,080
'08 WE	32,040	33,078	36,638	37,136	42,804	46,900	49,408	51,062	44,354	44,448	39,572	31,648
'09 WD	32,298	33,898	36,024	39,574	44,012	44,006	47,542	48,832	44,748	42,226	42,434	35,156
'09 WE	32,342	35,388	37,692	40,476	45,230	47,118	47,986	53,256	47,864	44,920	40,548	37,040
'10 WD	32,548	34,456	37,982	41,562	44,608	46,304	48,628	49,196	46,888	43,594	40,056	35,592
'10 WE	32,666	35,366	38,894	42,990	45,106	48,528	52,590	55,128	51,224	44,920	37,844	32,132
'11 WD	32,616	34,808	36,202	41,724	42,588	44,580	48,600	49,422	50,872	44,294	43,746	38,244
'11 WE	30,876	33,102	36,160	44,112	41,864	47,034	52,536	53,902	51,804	45,466	40,992	36,482
'12 WD	32,724	34,904	37,376	42,060	47,164	49,484	49,110	50,226	46,690	42,578	41,672	37,894
'12 WE	31,280	35,102	37,014	42,500	46,596	52,892	52,500	54,032	49,816	46,202	39,362	31,982
'13 WD	32,432	32,680	34,018	33,896	40,016	41,704	48,420					
'13 WE	30,446	29,726	34,494	34,300	39,514	42,698	53,968					

Note: 'Weekday' defined as Monday-Friday, 'Weekend' defined as Saturday-Sunday

Weekday/Weekend Monthly Average Daily Traffic ('08-'13)



	Jul-08	Jul-09	Jul-10	Jul-11	Jul-12	Jul-13
Weekday	45,532	47,542	48,628	48,600	49,110	48,420
Weekend	49,408	47,986	52,590	52,536	52,500	53,968