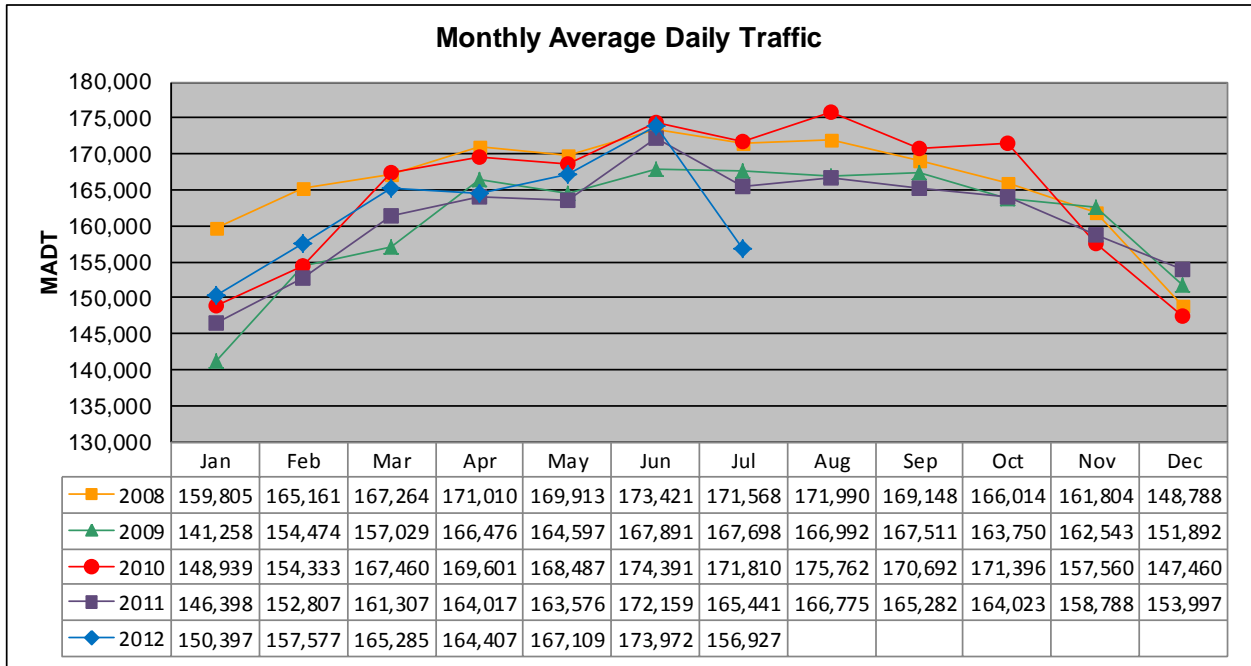


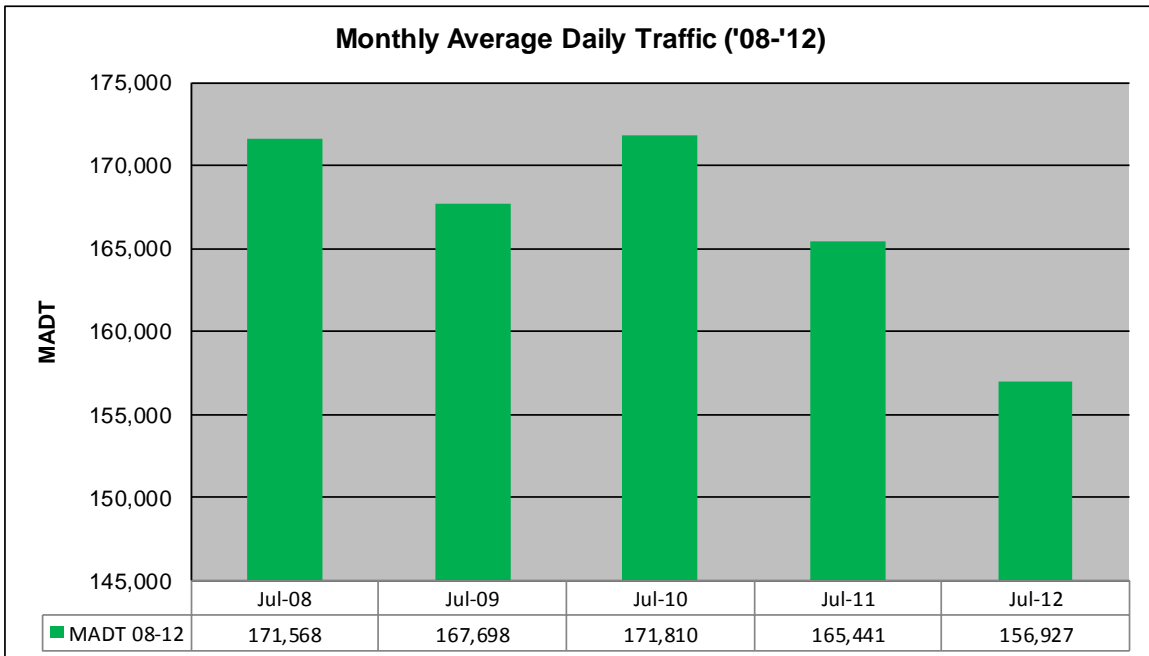
# MONTHLY REPORT, STATION NO. 321 (ATR)

## JULY 2012

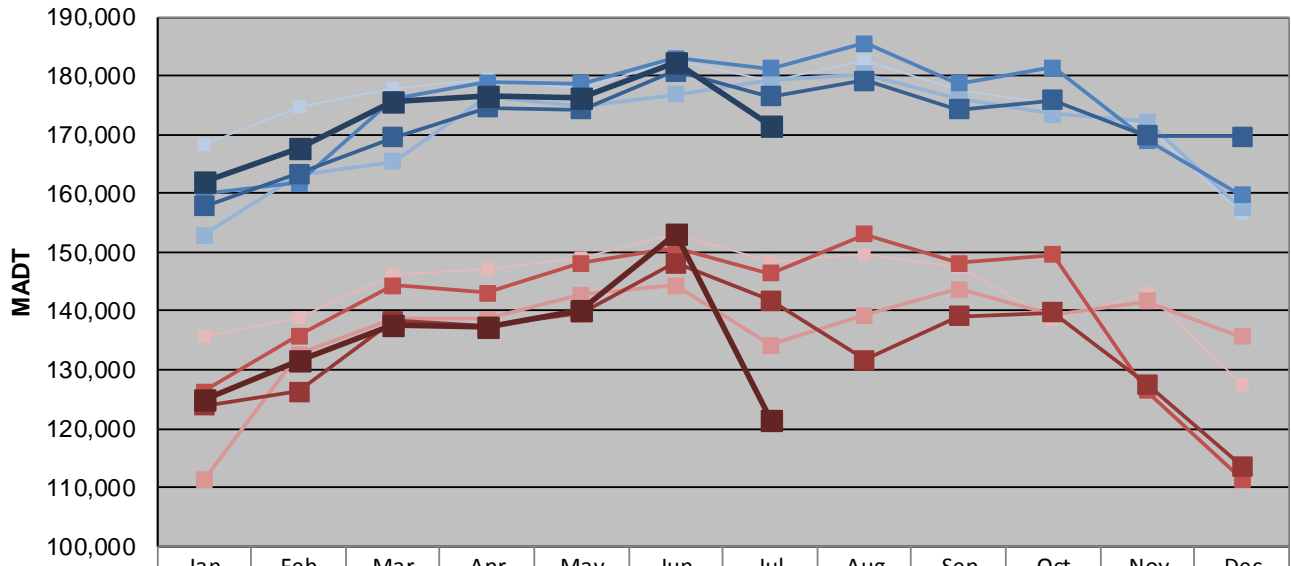
|   |                      |                                      |
|---|----------------------|--------------------------------------|
| Station Measurement: VOLUME                             |                      |                                      |
| Route: I-494  | Route Direction: E/W | Lanes: 6                             |
| County: Hennepin  |                      | Closest City: Bloomington            |
| Functional Class: Urban Principal Arterial - Interstate |                      |                                      |
| Location: W OF I-35W IN BLOOMINGTON                     |                      |                                      |
| Ref Post: 005+00.600                                    | True Mile: 5.605     | Sequence No. 9846                    |
| <b>Volume: 4,864,743</b>                                |                      | <b>MADT: 156,927</b>                 |
| <b>Weekday (M-F) MADT: 171,544</b>                      |                      | <b>Weekend (Sa-Su) MADT: 121,602</b> |



Note: Decrease in traffic October to November 2008, January to August 2009, and July 2012 due to construction on I-494



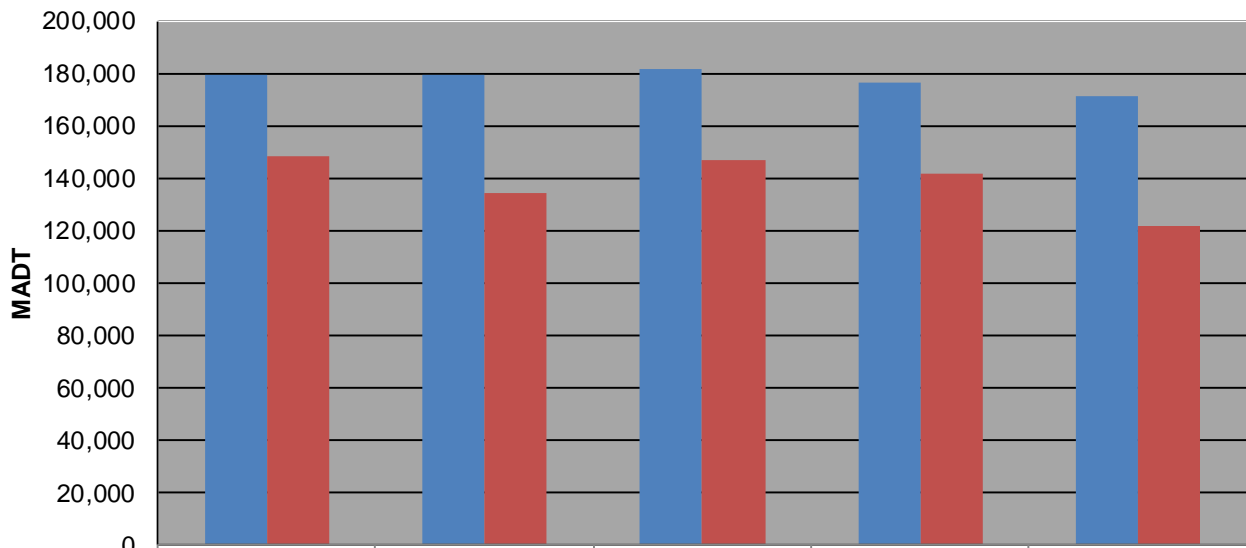
**Weekday (WD)/Weekend (WE) Monthly Average Daily Traffic**



|        | Jan     | Feb     | Mar     | Apr     | May     | Jun     | Jul     | Aug     | Sep     | Oct     | Nov     | Dec     |
|--------|---------|---------|---------|---------|---------|---------|---------|---------|---------|---------|---------|---------|
| '08 WD | 168,242 | 174,824 | 177,768 | 179,436 | 177,704 | 182,668 | 179,114 | 182,496 | 177,660 | 175,218 | 171,152 | 156,634 |
| '08 WE | 135,694 | 138,750 | 146,284 | 147,260 | 149,160 | 153,060 | 148,368 | 149,738 | 147,560 | 138,468 | 143,110 | 127,422 |
| '09 WD | 152,960 | 163,190 | 165,376 | 176,528 | 174,718 | 176,850 | 179,146 | 180,332 | 176,020 | 173,412 | 172,256 | 157,496 |
| '09 WE | 111,266 | 132,688 | 138,596 | 138,602 | 142,772 | 144,274 | 134,186 | 139,246 | 143,712 | 139,370 | 141,588 | 135,612 |
| '10 WD | 159,838 | 161,760 | 175,978 | 178,892 | 178,712 | 183,002 | 181,304 | 185,586 | 178,704 | 181,366 | 168,986 | 159,734 |
| '10 WE | 126,328 | 135,764 | 144,282 | 143,046 | 148,220 | 150,700 | 146,442 | 153,096 | 148,226 | 149,620 | 126,524 | 111,482 |
| '11 WD | 157,784 | 163,424 | 169,568 | 174,654 | 174,330 | 180,788 | 176,522 | 179,214 | 174,220 | 175,870 | 169,902 | 169,644 |
| '11 WE | 123,870 | 126,238 | 138,344 | 137,436 | 139,762 | 148,186 | 141,852 | 131,712 | 139,166 | 139,800 | 127,488 | 113,688 |
| '12 WD | 162,084 | 167,774 | 175,500 | 176,684 | 176,272 | 182,312 | 171,544 |         |         |         |         |         |
| '12 WE | 125,006 | 131,540 | 137,748 | 137,370 | 140,124 | 153,248 | 121,602 |         |         |         |         |         |

Note: 'Weekday' defined as Monday-Friday, 'Weekend' defined as Saturday-Sunday

**Weekday/Weekend Monthly Average Daily Traffic ('07-'11)**



|         | Jul-08  | Jul-09  | Jul-10  | Jul-11  | Jul-12  |
|---------|---------|---------|---------|---------|---------|
| Weekday | 179,114 | 179,146 | 181,304 | 176,522 | 171,544 |
| Weekend | 148,368 | 134,186 | 146,442 | 141,852 | 121,602 |