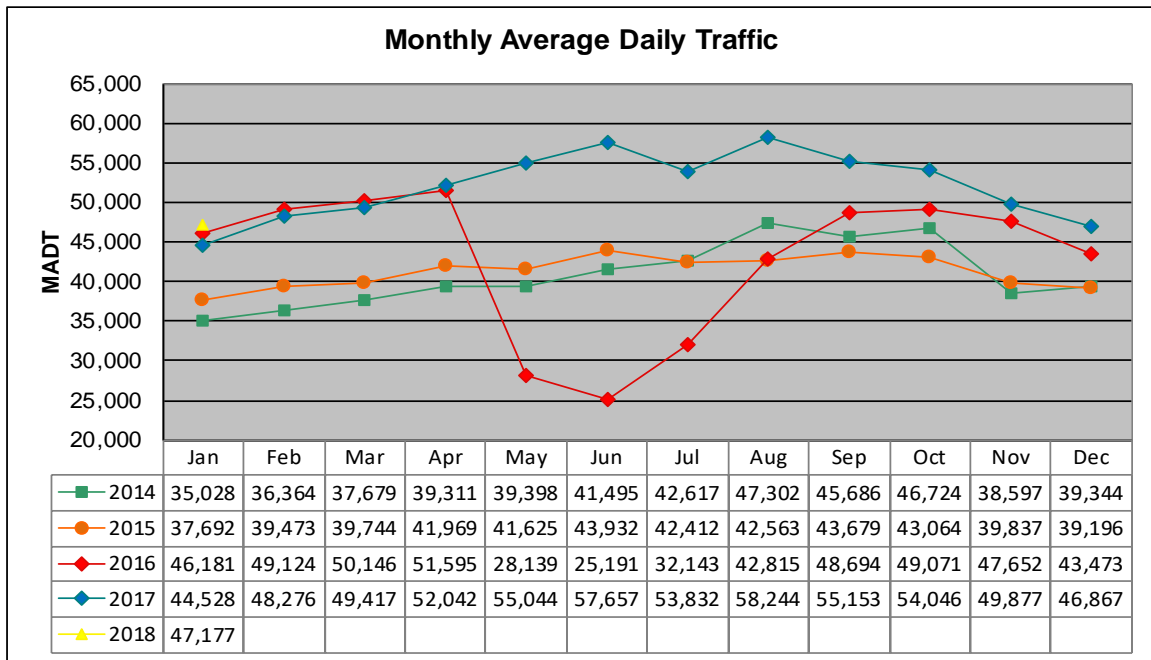


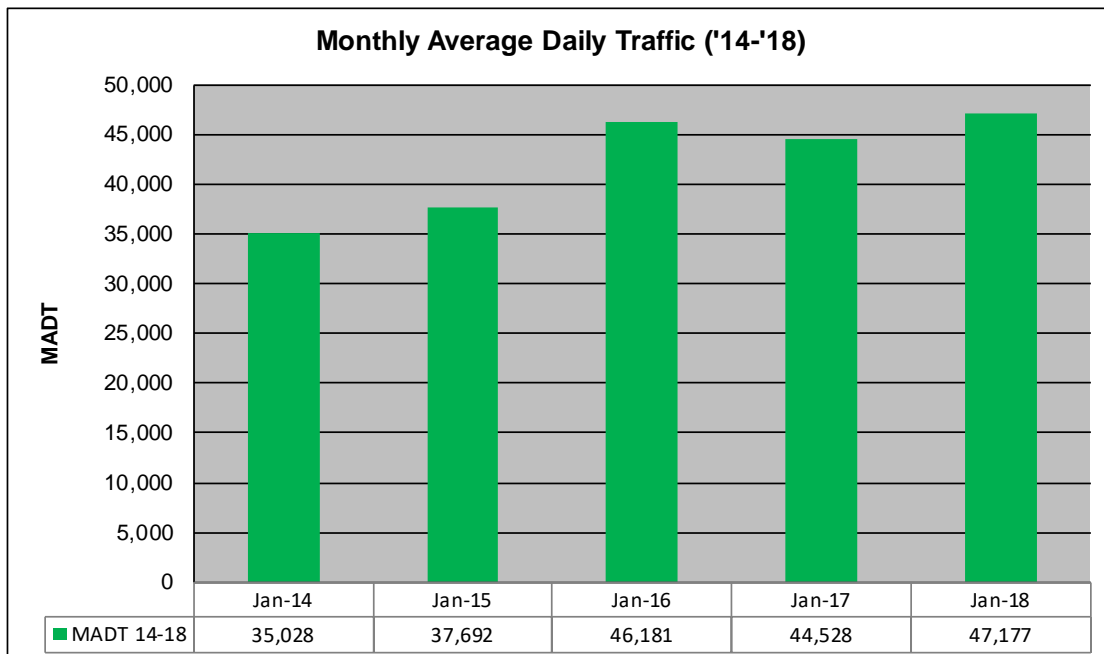
# MONTHLY REPORT, STATION NO. 389 (ATR)

## JANUARY 2018

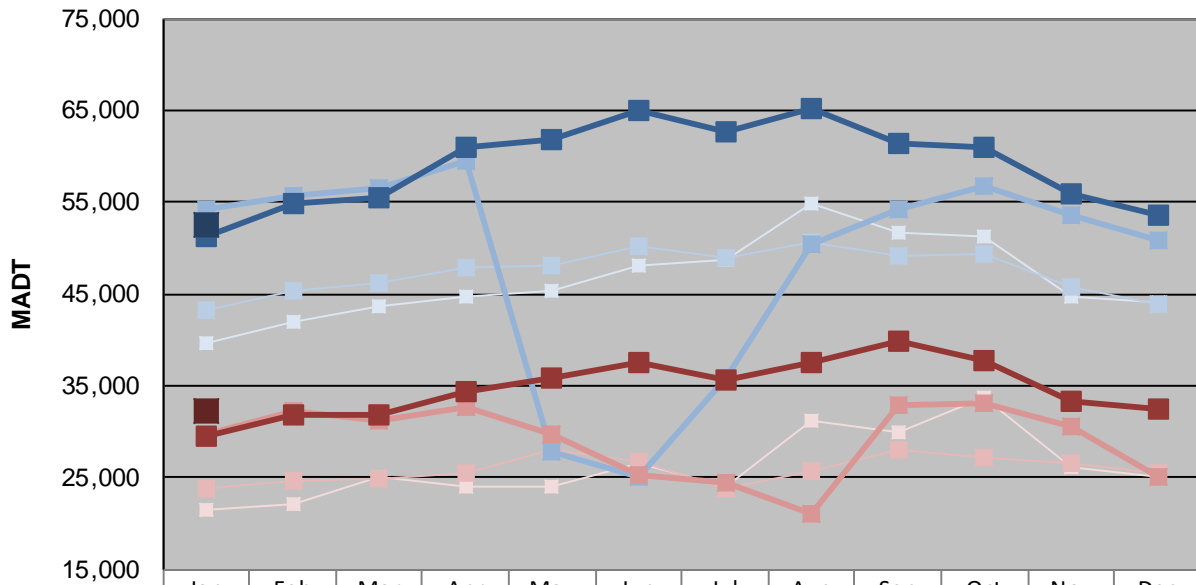
|  |                      |                                     |
|--|----------------------|-------------------------------------|
| <b>Station Measurement: VOLUME</b>   |                      |                                     |
| Route: TH 280  | Route Direction: N/S | Lanes: 4                            |
| County: Ramsey   |                      | Closest City: Lauderdale            |
| Functional Class: Urban Principal Arterial - Other Freeways or Expressways |                      |                                     |
| Location: N OF CSAH30 (LARPENTEUR AVE W) IN LAUDERDALE                     |                      |                                     |
| Ref Post: 002+00.650   | True Mile: 2.65      | Sequence No. 9877                   |
| <b>Volume: 1,462,491</b>   |                      | <b>MADT: 47,177</b>                 |
| <b>Weekday (M-F) MADT: 52,616</b>  |                      | <b>Weekend (Sa-Su) MADT: 32,188</b> |



Note: Increase in traffic July to September 2014 and September 2016 due to detour from I-35W... Decrease in traffic May to July 2016 due to construction on TH 280



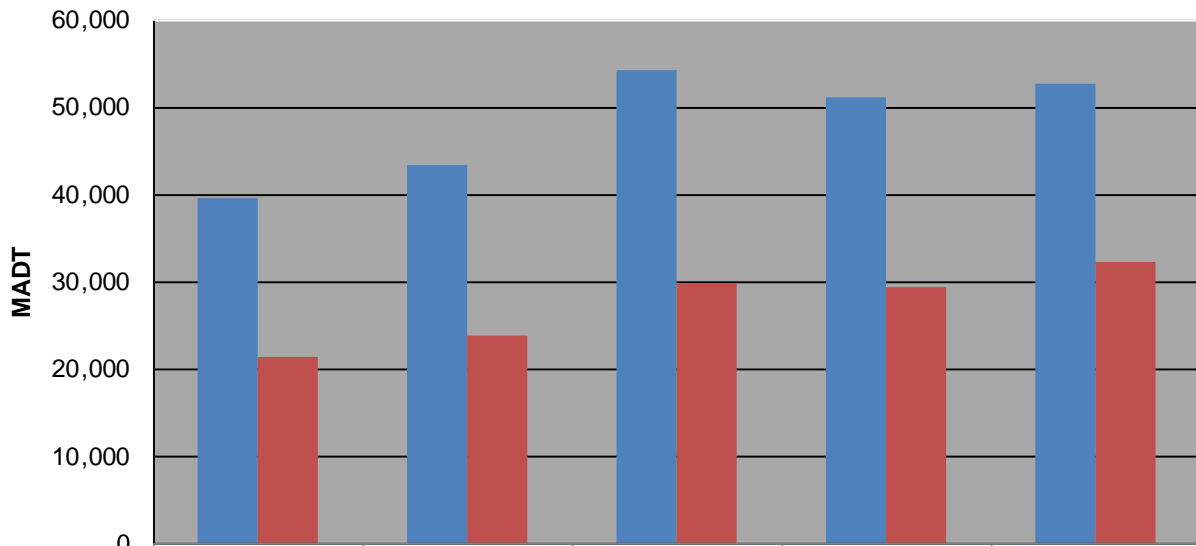
### Weekday (WD)/Weekend (WE) Monthly Average Daily Traffic



|        | Jan    | Feb    | Mar    | Apr    | May    | Jun    | Jul    | Aug    | Sep    | Oct    | Nov    | Dec    |
|--------|--------|--------|--------|--------|--------|--------|--------|--------|--------|--------|--------|--------|
| '14 WD | 39,606 | 42,040 | 43,752 | 44,764 | 45,394 | 48,066 | 48,722 | 54,960 | 51,634 | 51,176 | 44,792 | 44,144 |
| '14 WE | 21,454 | 22,176 | 25,108 | 24,118 | 24,046 | 26,658 | 24,084 | 31,236 | 29,868 | 33,740 | 26,204 | 25,160 |
| '15 WD | 43,294 | 45,418 | 46,104 | 47,866 | 48,018 | 50,204 | 48,880 | 50,644 | 49,220 | 49,322 | 45,700 | 43,862 |
| '15 WE | 23,846 | 24,612 | 24,942 | 25,612 | 28,032 | 26,882 | 23,876 | 25,770 | 28,040 | 27,242 | 26,646 | 25,448 |
| '16 WD | 54,210 | 55,626 | 56,584 | 59,540 | 27,776 | 25,174 | 35,892 | 50,396 | 54,208 | 56,822 | 53,544 | 50,852 |
| '16 WE | 29,764 | 32,336 | 31,294 | 32,594 | 29,640 | 25,232 | 24,420 | 20,978 | 32,832 | 33,042 | 30,664 | 24,990 |
| '17 WD | 51,220 | 54,890 | 55,426 | 60,902 | 61,914 | 64,918 | 62,604 | 65,298 | 61,350 | 61,078 | 55,950 | 53,524 |
| '17 WE | 29,482 | 31,744 | 31,840 | 34,322 | 35,908 | 37,522 | 35,738 | 37,604 | 39,900 | 37,828 | 33,240 | 32,514 |
| '18 WD | 52,616 |        |        |        |        |        |        |        |        |        |        |        |
| '18 WE | 32,188 |        |        |        |        |        |        |        |        |        |        |        |

Note: 'Weekday' defined as Monday-Friday, 'Weekend' defined as Saturday-Sunday

### Weekday/Weekend Monthly Average Daily Traffic ('14-'18)



|         | Jan-14 | Jan-15 | Jan-16 | Jan-17 | Jan-18 |
|---------|--------|--------|--------|--------|--------|
| Weekday | 39,606 | 43,294 | 54,210 | 51,220 | 52,616 |
| Weekend | 21,454 | 23,846 | 29,764 | 29,482 | 32,188 |