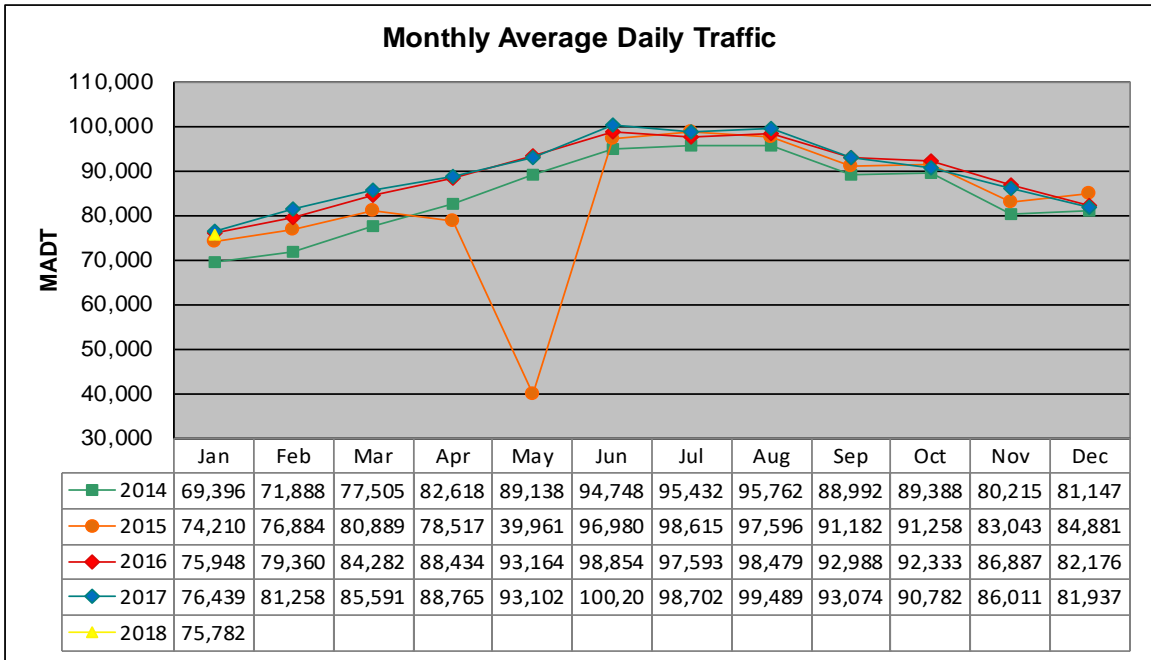


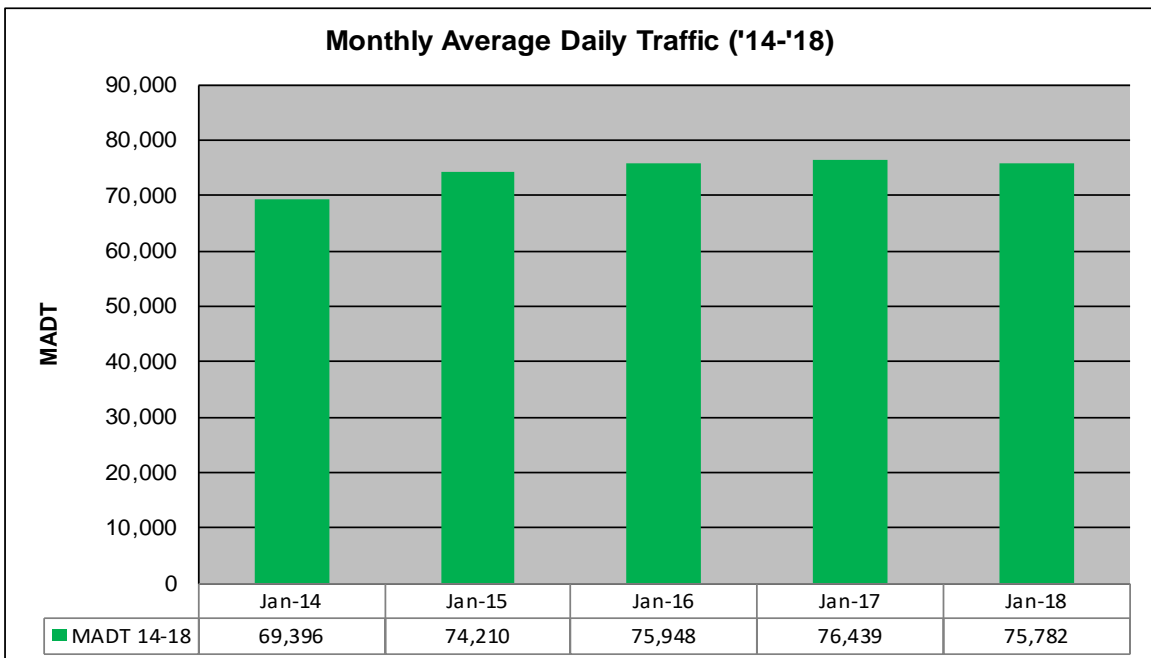
MONTHLY REPORT, STATION NO. 354 (ATR)

JANUARY 2018

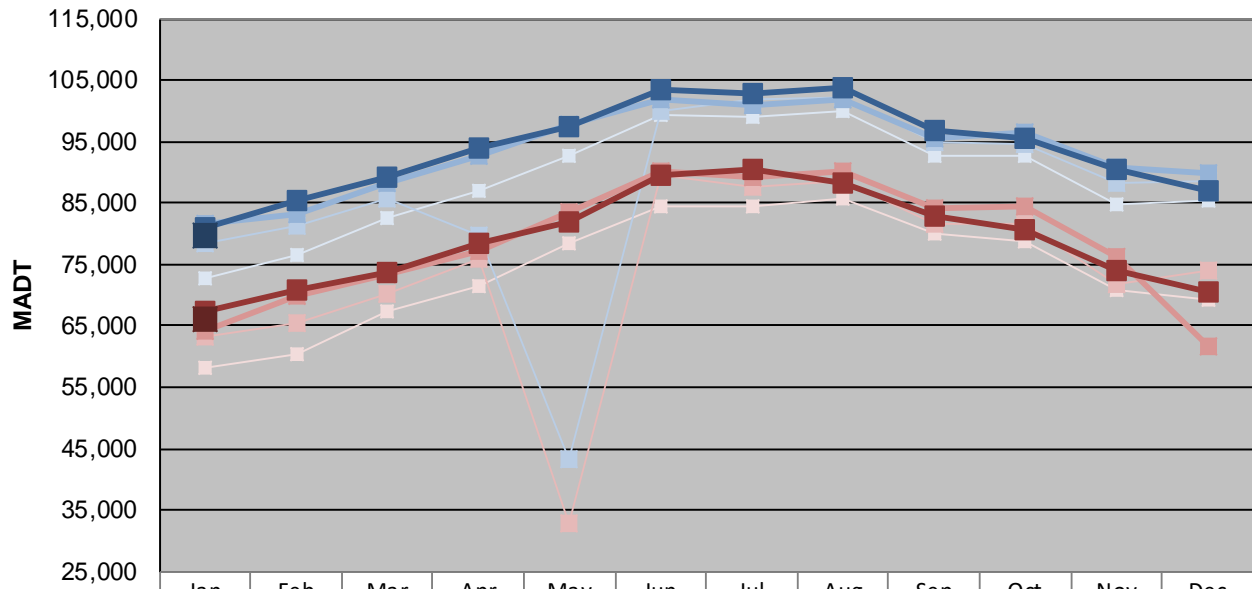
Station Measurement: VOLUME/SPEED/CLASS		
Route: I-94	Route Direction: E/W	Lanes: 6
County: Washington		Closest City: Woodbury
Functional Class: Urban Principal Arterial - Interstate		
Location: W OF MSAS127 (COTTAGE GROVE DR) IN WOODBURY		
Ref Post: 252+00.500	True Mile: 253.096	Sequence No. 9861
Volume: 2,349,246		MADT: 75,782
Weekday (M-F) MADT: 79,642		Weekend (Sa-Su) MADT: 66,078



Note: Decrease in traffic April/May 2015 due to construction on I-94



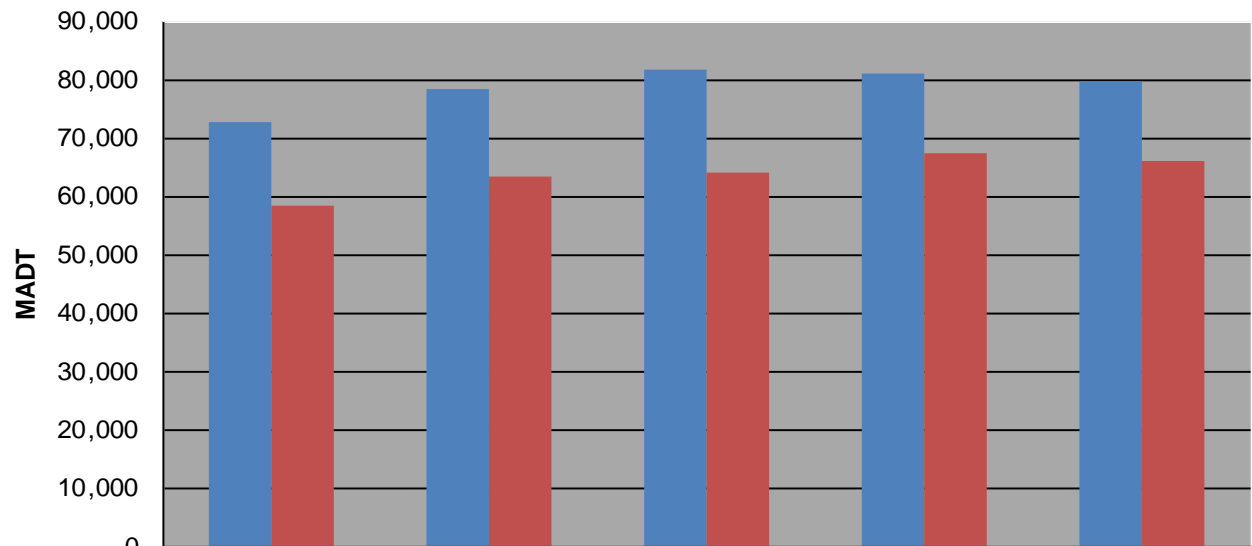
Weekday (WD)/Weekend (WE) Monthly Average Daily Traffic



	Jan	Feb	Mar	Apr	May	Jun	Jul	Aug	Sep	Oct	Nov	Dec
'14 WD	72,822	76,448	82,498	86,864	92,856	99,310	99,032	100,042	92,664	92,694	84,910	85,404
'14 WE	58,254	60,490	67,428	71,594	78,442	84,606	84,616	85,810	79,954	78,740	70,826	69,232
'15 WD	78,308	81,420	85,758	79,664	43,186	100,072	101,982	102,098	94,952	94,546	88,210	88,682
'15 WE	63,302	65,544	70,352	75,944	32,898	89,570	87,714	88,624	81,762	81,662	71,778	73,958
'16 WD	81,550	83,050	88,350	92,662	97,644	101,896	101,036	101,892	95,560	96,370	90,808	89,896
'16 WE	64,120	70,004	73,490	77,154	83,456	90,296	89,202	90,066	84,096	84,382	76,292	61,822
'17 WD	80,872	85,406	89,370	93,910	97,600	103,588	102,830	103,644	96,710	95,434	90,334	86,874
'17 WE	67,342	70,886	73,622	78,474	81,896	89,510	90,442	88,190	82,872	80,690	74,054	70,570
'18 WD	79,642											
'18 WE	66,078											

Note: 'Weekday' defined as Monday-Friday, 'Weekend' defined as Saturday-Sunday

Weekday/Weekend Monthly Average Daily Traffic ('14-'18)



	Jan-14	Jan-15	Jan-16	Jan-17	Jan-18
Weekday	72,822	78,308	81,550	80,872	79,642
Weekend	58,254	63,302	64,120	67,342	66,078