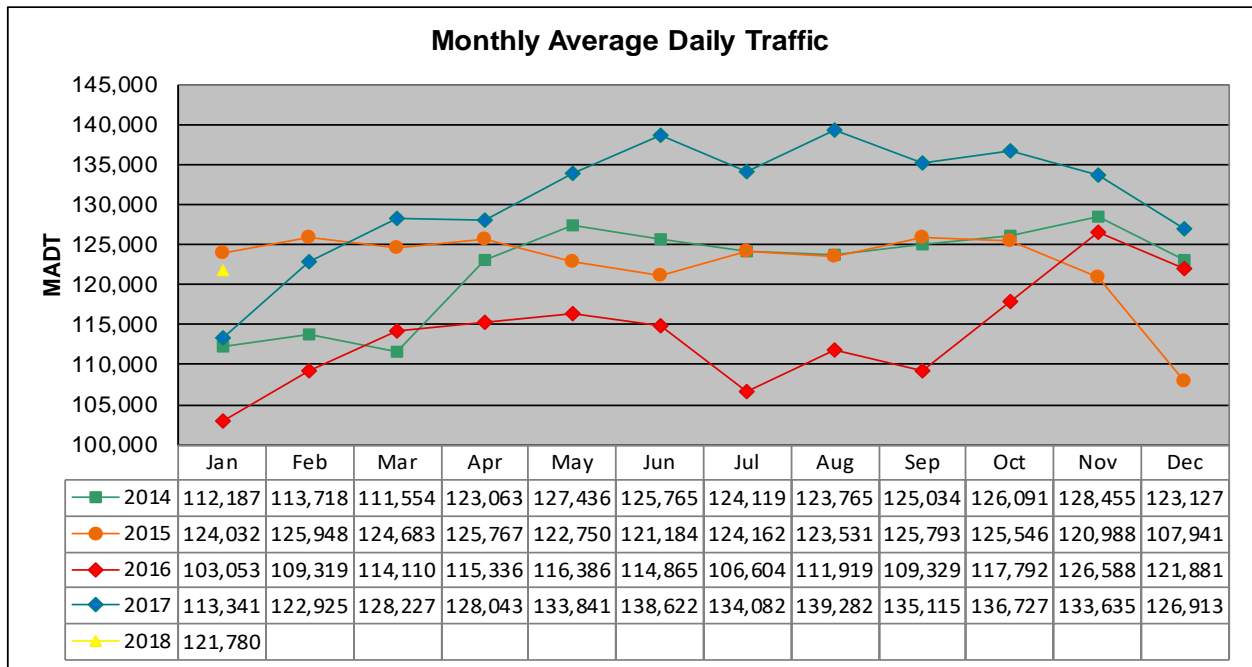


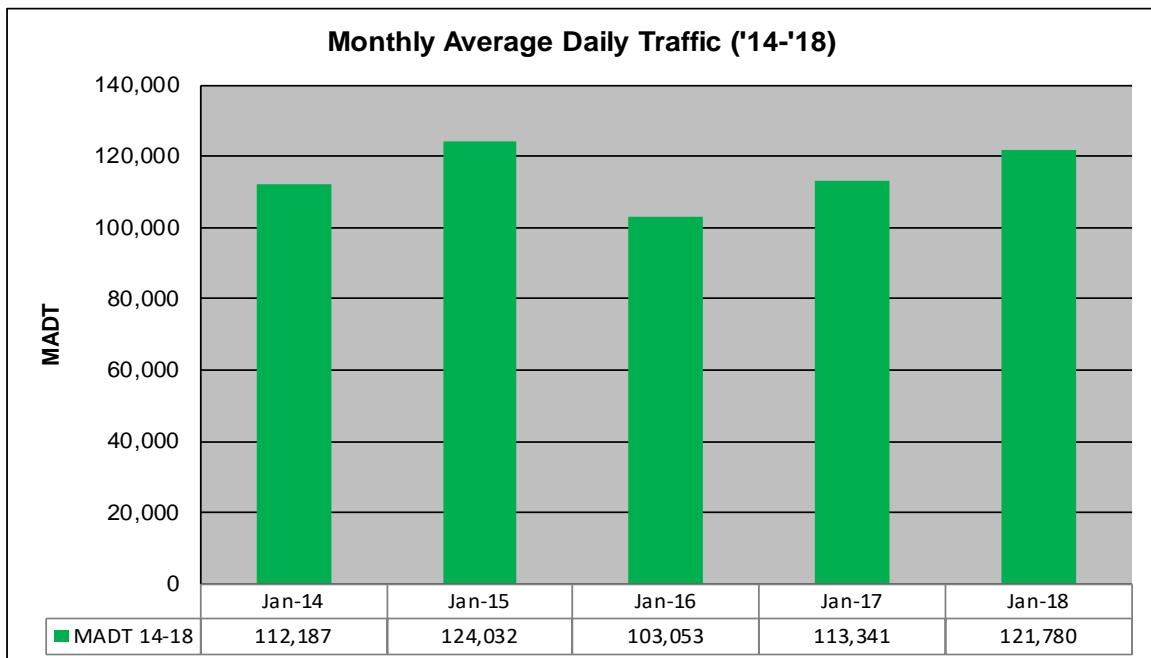
MONTHLY REPORT, STATION NO. 303 (ATR)

JANUARY 2018

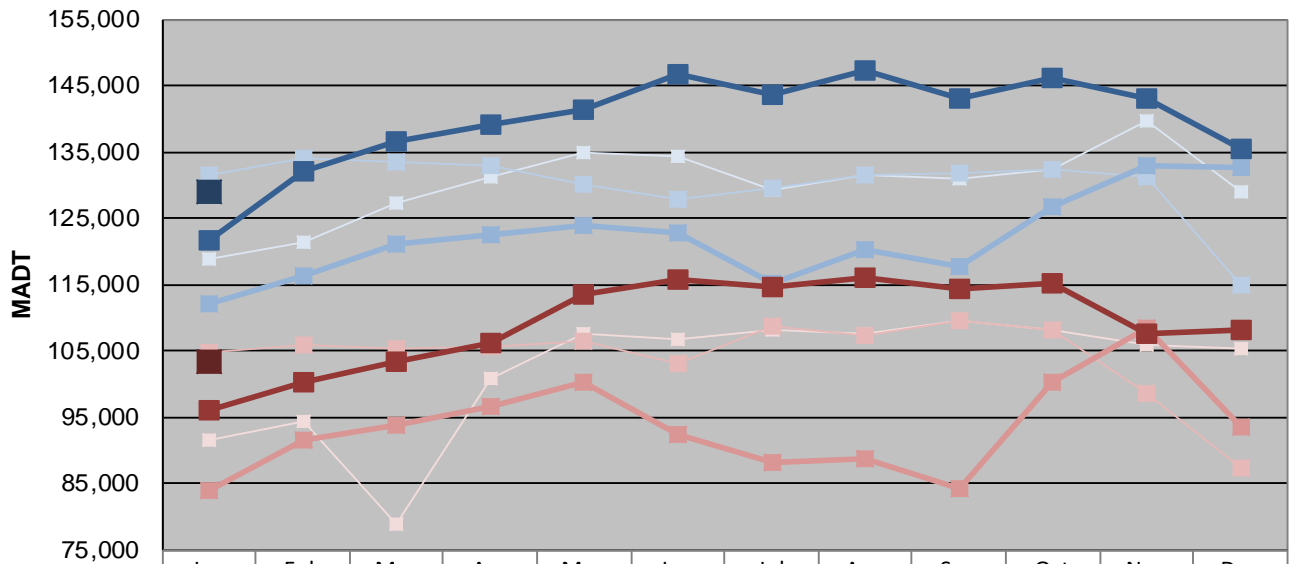
Station Measurement: VOLUME		
Route: I-35E	Route Direction: N/S	Lanes: 6
County: Ramsey		Closest City: St Paul
Functional Class: Urban Principal Arterial - Interstate		
Location: S OF MSAS109 (E ARLINGTON AVE) IN ST PAUL		
Ref Post: 109+00.835	True Mile: 109.893	Sequence No. 9836
Volume: 3,775,181		MADT: 121,780
Weekday (M-F) MADT: 128,866		Weekend (Sa-Su) MADT: 103,254



Note: Decrease in traffic February/March and July to October 2014, and July to October 2016 due to construction on I-35E



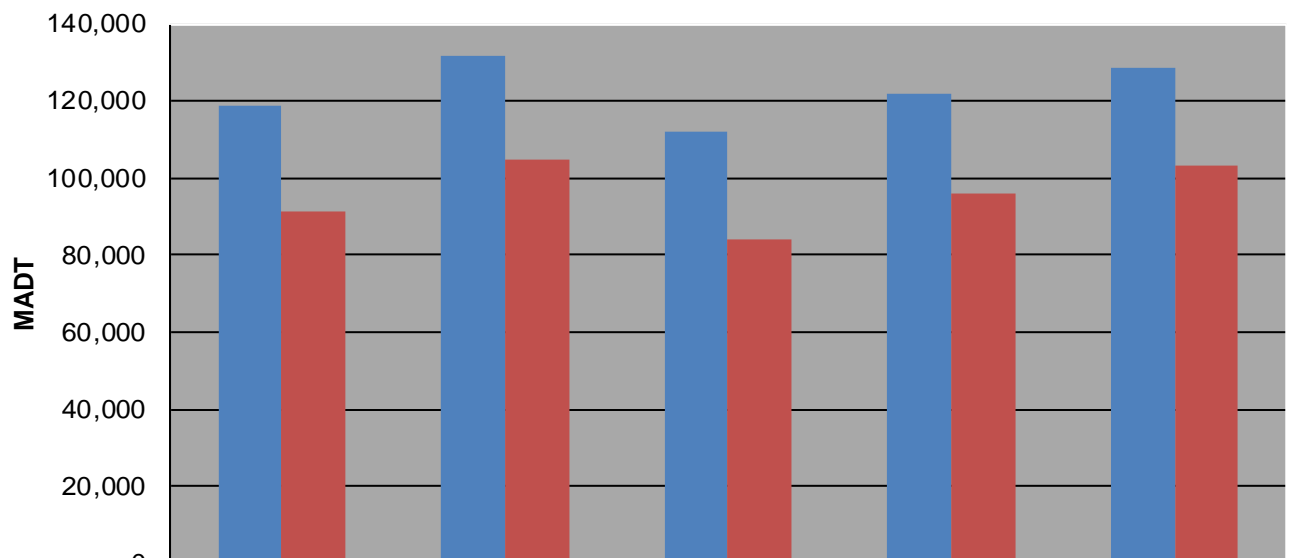
Weekday (WD)/Weekend (WE) Monthly Average Daily Traffic



	Jan	Feb	Mar	Apr	May	Jun	Jul	Aug	Sep	Oct	Nov	Dec
'14 WD	118,890	121,424	127,318	131,128	134,758	134,460	129,276	131,398	131,096	132,234	139,704	129,116
'14 WE	91,462	94,454	78,988	100,772	107,710	106,824	108,206	107,634	109,442	108,132	105,956	105,260
'15 WD	131,588	133,970	133,406	133,036	130,228	127,948	129,562	131,412	131,670	132,236	131,302	114,872
'15 WE	104,916	105,896	105,218	105,748	106,378	103,068	108,668	107,264	109,442	108,134	98,474	87,390
'16 WD	112,212	116,284	121,186	122,526	123,816	122,914	115,102	120,190	117,842	126,612	132,978	132,690
'16 WE	83,870	91,516	93,820	96,594	100,152	92,260	88,146	88,846	84,334	100,172	108,348	93,564
'17 WD	121,664	131,958	136,536	139,020	141,368	146,584	143,574	147,362	143,134	146,138	143,130	135,408
'17 WE	96,102	100,342	103,322	106,090	113,554	115,834	114,658	116,024	114,490	115,196	107,464	108,042
'18 WD	128,866											
'18 WE	103,254											

Note: 'Weekday' defined as Monday-Friday, 'Weekend' defined as Saturday-Sunday

Weekday/Weekend Monthly Average Daily Traffic ('14-'18)



	Jan-14	Jan-15	Jan-16	Jan-17	Jan-18
Weekday	118,890	131,588	112,212	121,664	128,866
Weekend	91,462	104,916	83,870	96,102	103,254