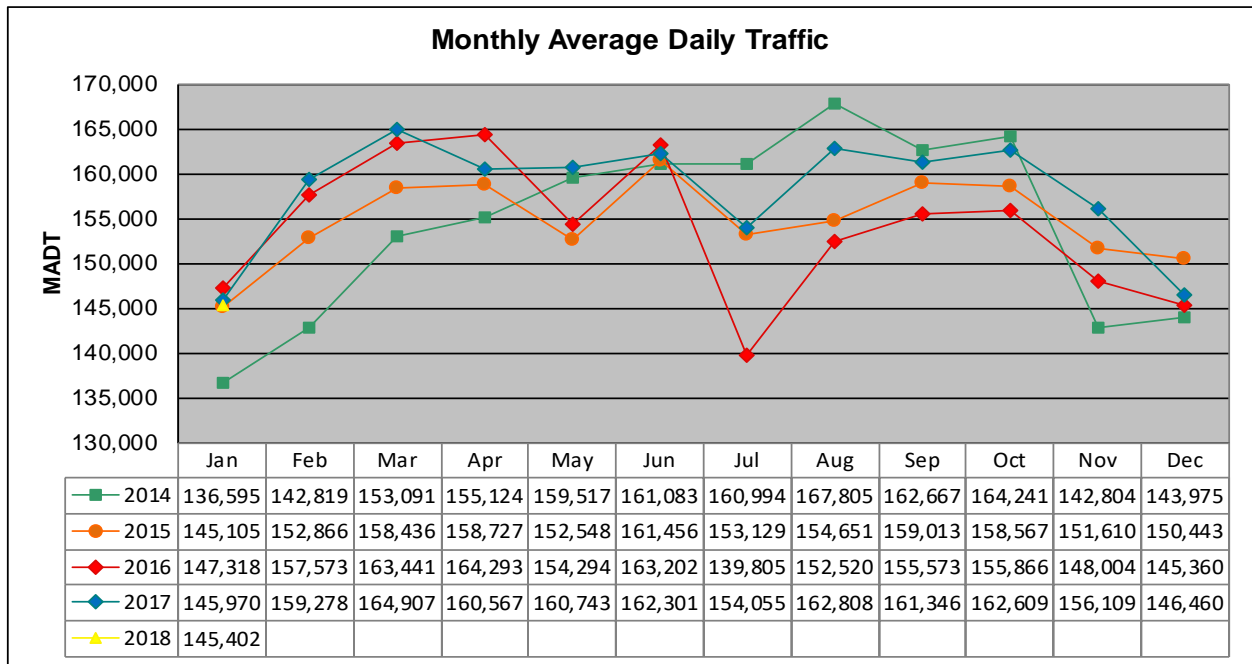


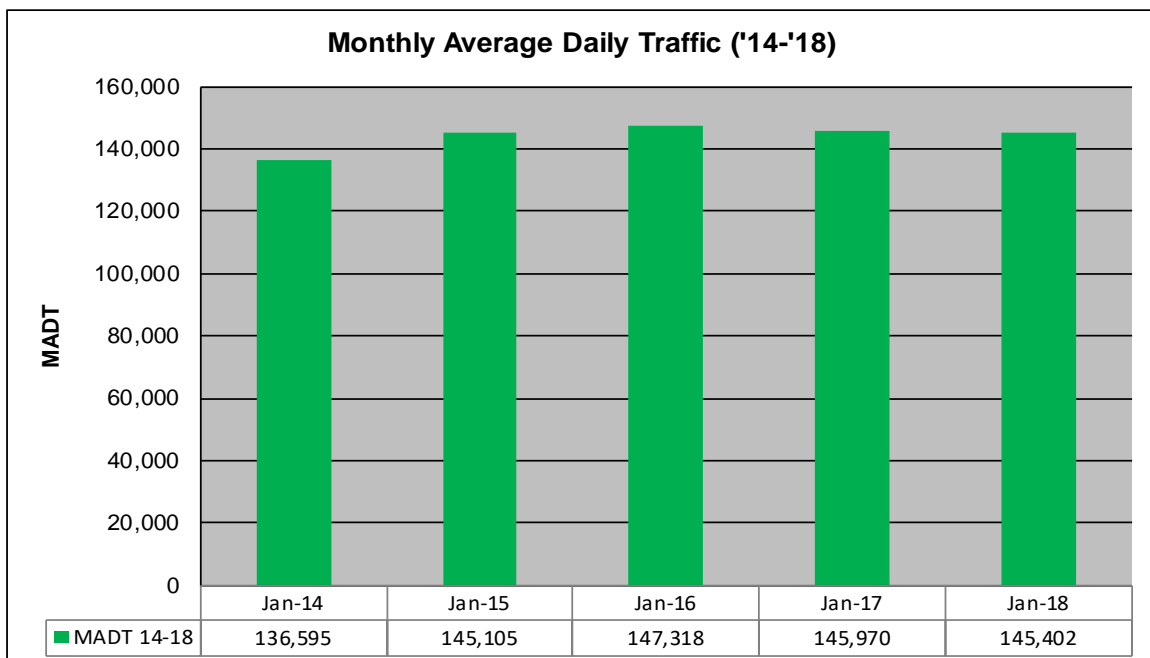
# MONTHLY REPORT, STATION NO. 301 (ATR)

## JANUARY 2018

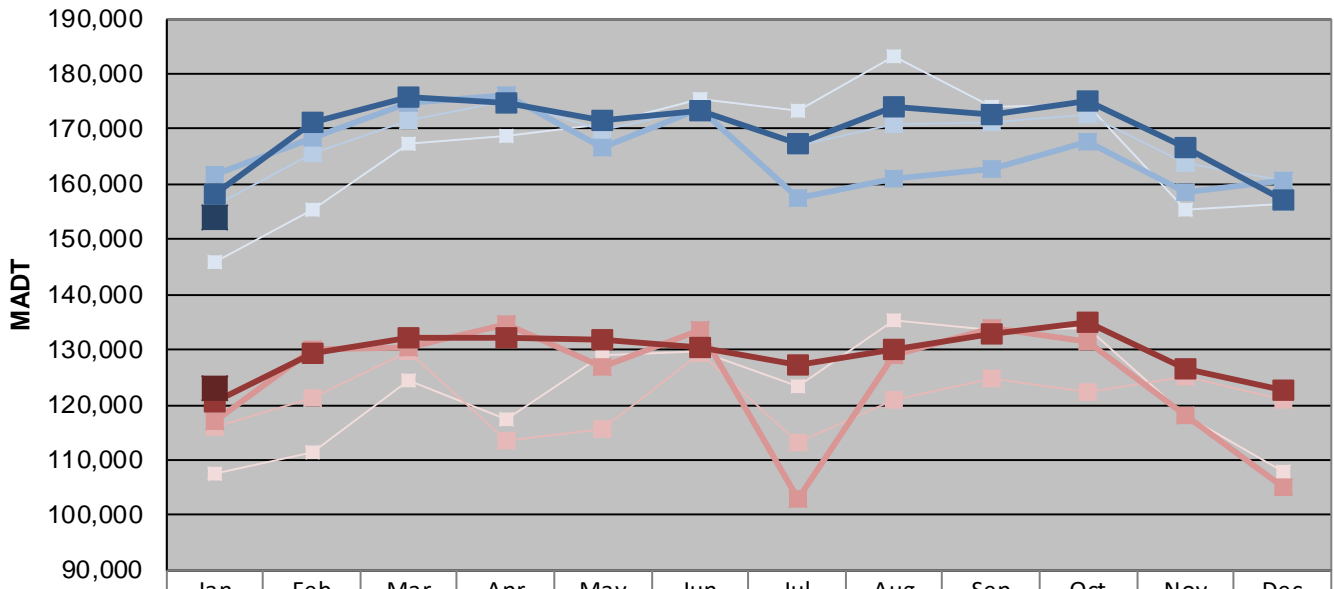
Station Measurement: VOLUME		
Route: I-94	Route Direction: E/W	Lanes: 8
County: Ramsey		Closest City: St Paul
Functional Class: Urban Principal Arterial - Interstate		
Location: W OF N VICTORIA ST IN ST PAUL		
Ref Post: 239+00.922	True Mile: 240.541	Sequence No. 9834
<b>Volume: 4,507,471</b>		<b>MADT: 145,402</b>
<b>Weekday (M-F) MADT: 154,006</b>		<b>Weekend (Sa-Su) MADT: 123,072</b>



Note: Decrease in traffic July 2016 due to construction on I-94



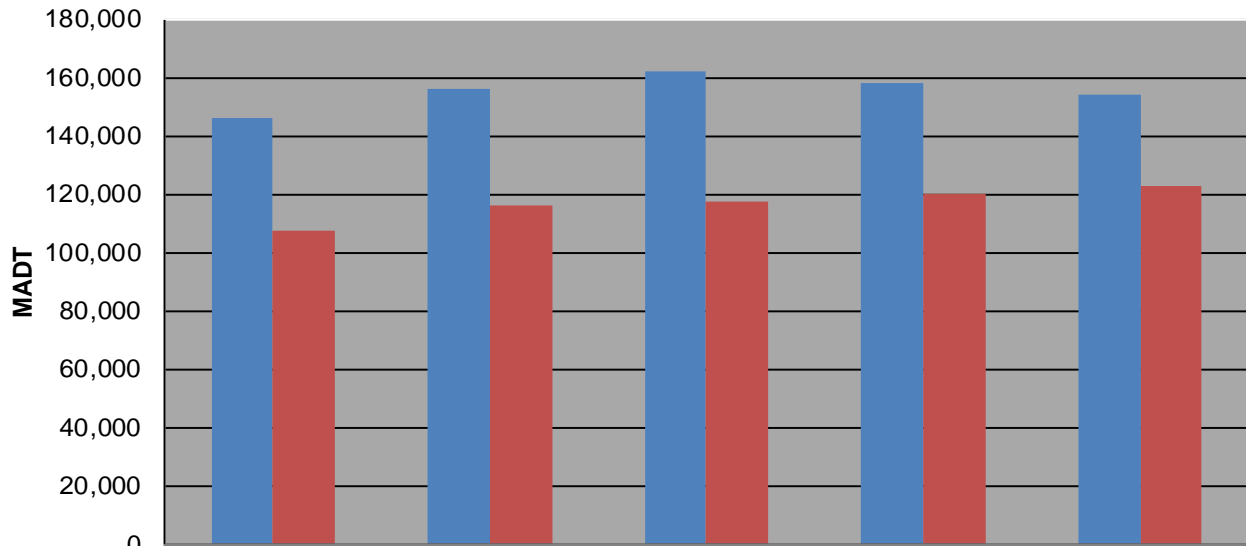
### Weekday (WD)/Weekend (WE) Monthly Average Daily Traffic



	Jan	Feb	Mar	Apr	May	Jun	Jul	Aug	Sep	Oct	Nov	Dec
'14 WD	145,928	155,374	167,166	168,764	170,804	175,314	173,306	183,102	173,866	174,276	155,224	156,364
'14 WE	107,526	111,430	124,438	117,370	128,850	129,720	123,482	135,208	133,644	133,998	117,962	107,844
'15 WD	156,246	165,558	171,592	174,928	169,736	173,544	166,840	170,954	171,216	172,488	163,892	160,510
'15 WE	116,122	121,134	129,744	113,502	115,670	129,186	113,058	121,006	124,634	122,134	124,990	120,762
'16 WD	161,828	168,380	174,814	176,260	166,488	173,768	157,358	160,966	162,802	167,854	158,458	160,762
'16 WE	117,150	130,026	130,322	134,708	127,036	133,472	102,776	129,082	134,030	131,426	117,958	104,980
'17 WD	158,104	171,306	175,766	174,702	171,550	173,440	167,300	173,998	172,554	174,946	166,694	157,186
'17 WE	120,406	129,212	132,146	132,296	131,768	130,532	127,140	130,134	132,842	134,810	126,592	122,580
'18 WD	154,006											
'18 WE	123,072											

Note: 'Weekday' defined as Monday-Friday, 'Weekend' defined as Saturday-Sunday

### Weekday/Weekend Monthly Average Daily Traffic ('14-'18)



	Jan-14	Jan-15	Jan-16	Jan-17	Jan-18
Weekday	145,928	156,246	161,828	158,104	154,006
Weekend	107,526	116,122	117,150	120,406	123,072