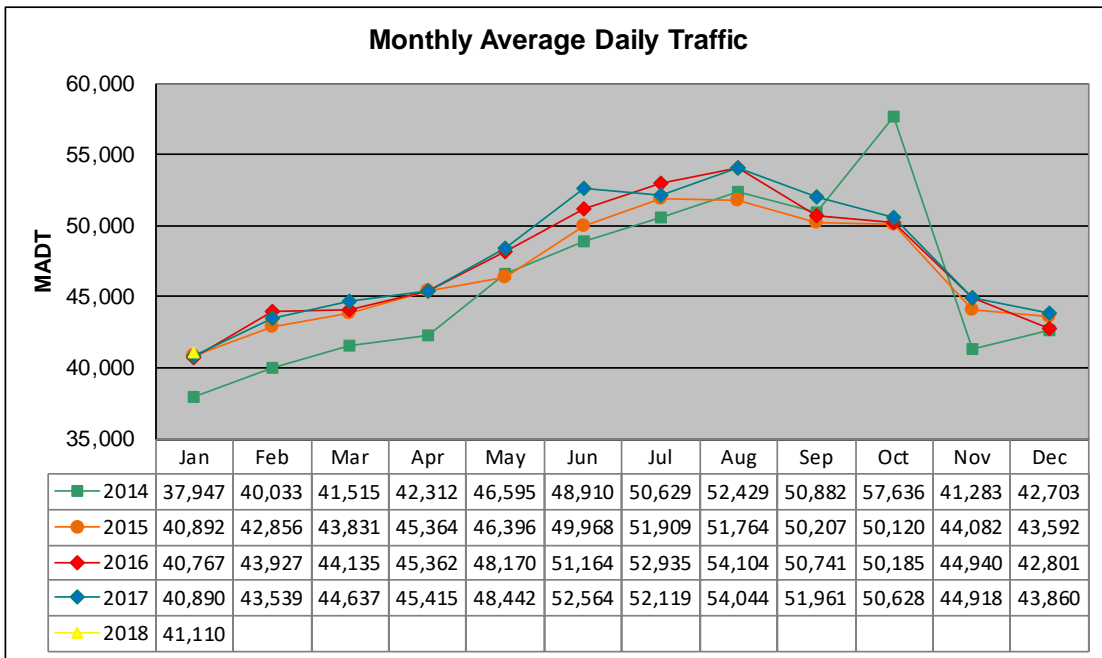


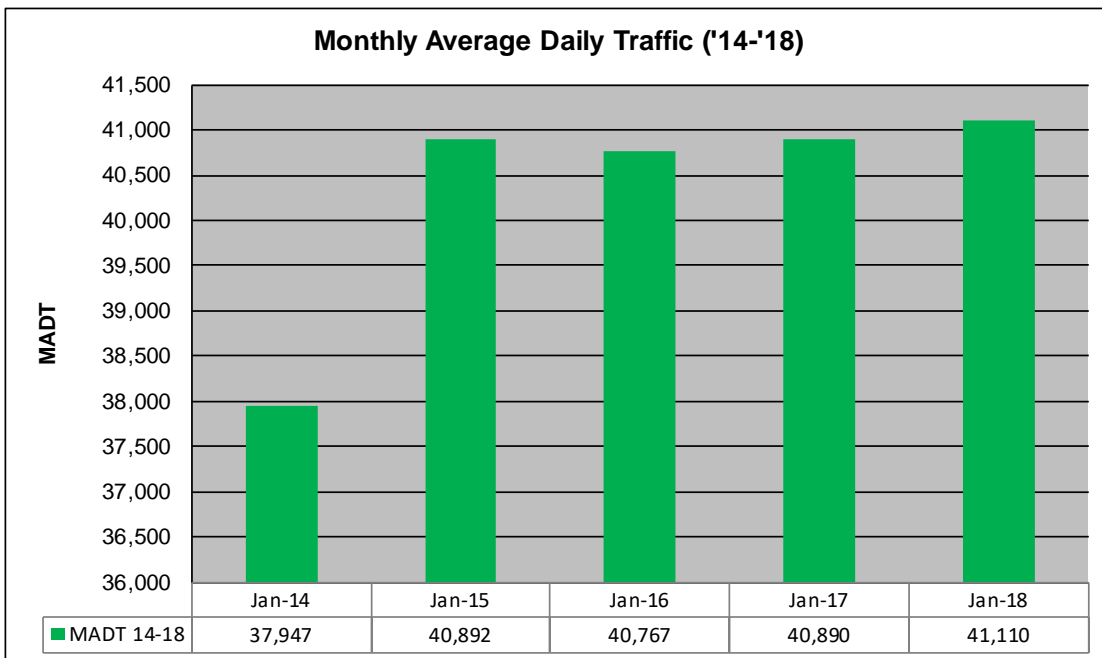
MONTHLY REPORT, STATION NO. 103 (ATR)

JANUARY 2018

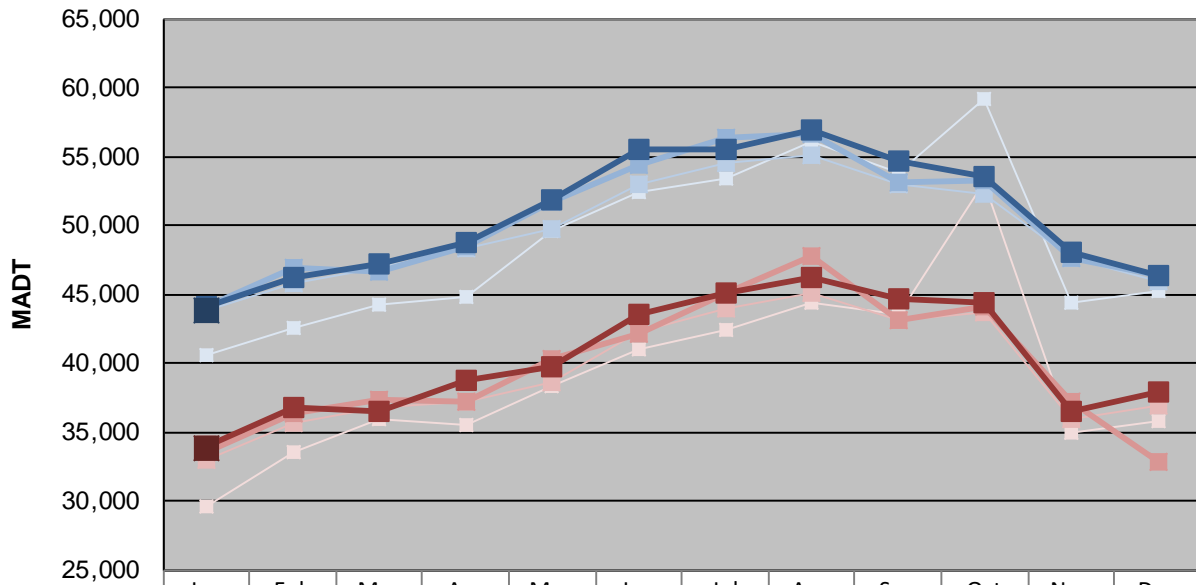
Station Measurement: VOLUME/SPEED/CLASS		
Route: I-35	Route Direction: N/S	Lanes: 4
County: St Louis	Closest City: Duluth	
Functional Class: Urban Principal Arterial - Interstate		
Location: E OF MSAS107 (CENTRAL AVE) IN DULUTH		
Ref Post: 252+00.600	True Mile: 252.622	Sequence No. 9825
Volume: 1,274,395		MADT: 41,110
Weekday (M-F) MADT: 43,812		Weekend (Sa-Su) MADT: 33,896



Note: Increase in traffic October 2014 due to detour from bridge construction



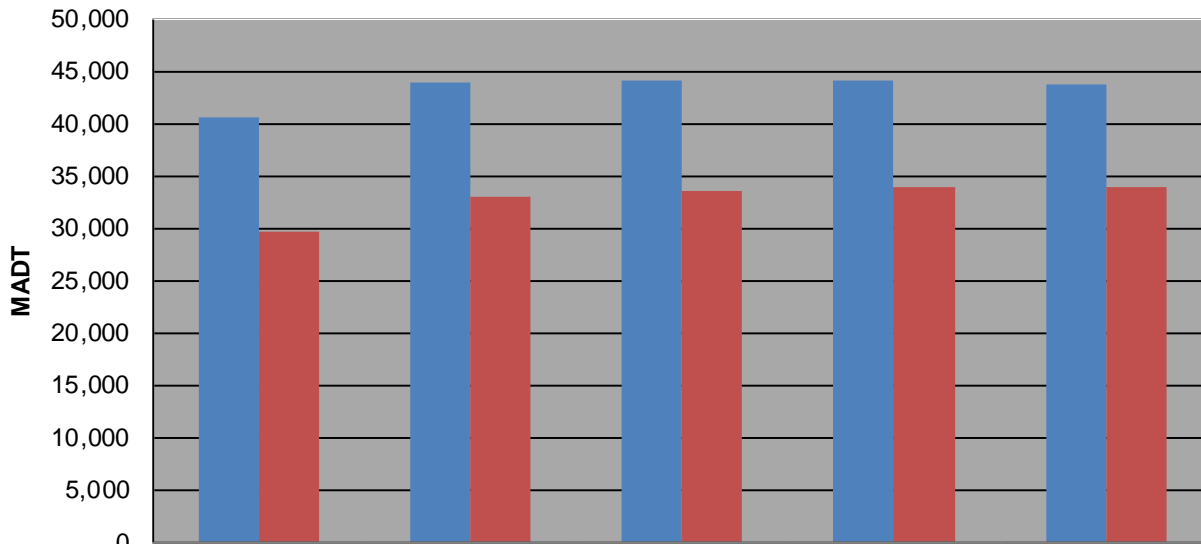
Weekday (WD)/Weekend (WE) Monthly Average Daily Traffic



	Jan	Feb	Mar	Apr	May	Jun	Jul	Aug	Sep	Oct	Nov	Dec
'14 WD	40,588	42,604	44,234	44,874	49,584	52,376	53,402	56,076	53,756	59,124	44,412	45,260
'14 WE	29,680	33,606	35,954	35,482	38,336	41,080	42,448	44,324	43,532	53,056	35,030	35,754
'15 WD	43,888	45,732	46,962	48,376	49,790	52,996	54,478	55,106	53,022	52,334	47,566	45,986
'15 WE	33,054	35,664	36,858	37,162	38,676	42,294	43,988	45,078	43,146	43,662	36,016	36,982
'16 WD	44,110	46,928	46,654	48,492	51,738	54,366	56,398	56,632	53,130	53,204	47,672	46,314
'16 WE	33,604	36,390	37,310	37,162	40,312	42,190	45,136	47,824	43,112	44,170	37,224	32,810
'17 WD	44,106	46,232	47,240	48,732	51,856	55,550	55,562	56,896	54,622	53,574	47,990	46,360
'17 WE	33,934	36,808	36,568	38,780	39,698	43,496	45,066	46,260	44,724	44,326	36,564	37,904
'18 WD	43,812											
'18 WE	33,896											

Note: 'Weekday' defined as Monday-Friday, 'Weekend' defined as Saturday-Sunday

Weekday/Weekend Monthly Average Daily Traffic ('14-'18)



	Jan-14	Jan-15	Jan-16	Jan-17	Jan-18
Weekday	40,588	43,888	44,110	44,106	43,812
Weekend	29,680	33,054	33,604	33,934	33,896