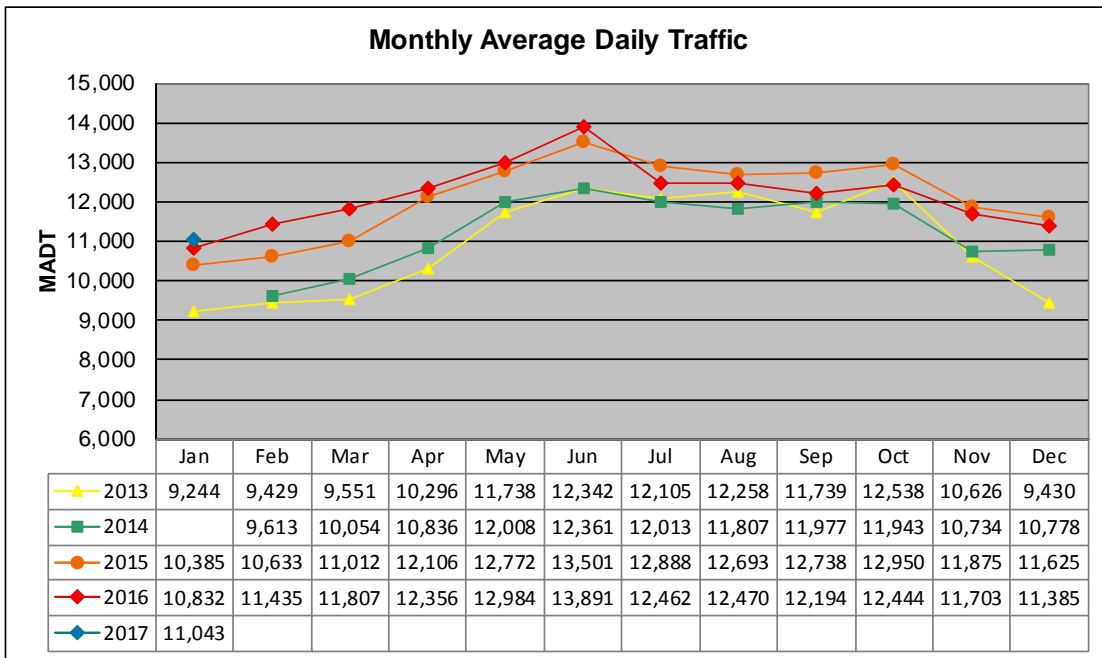


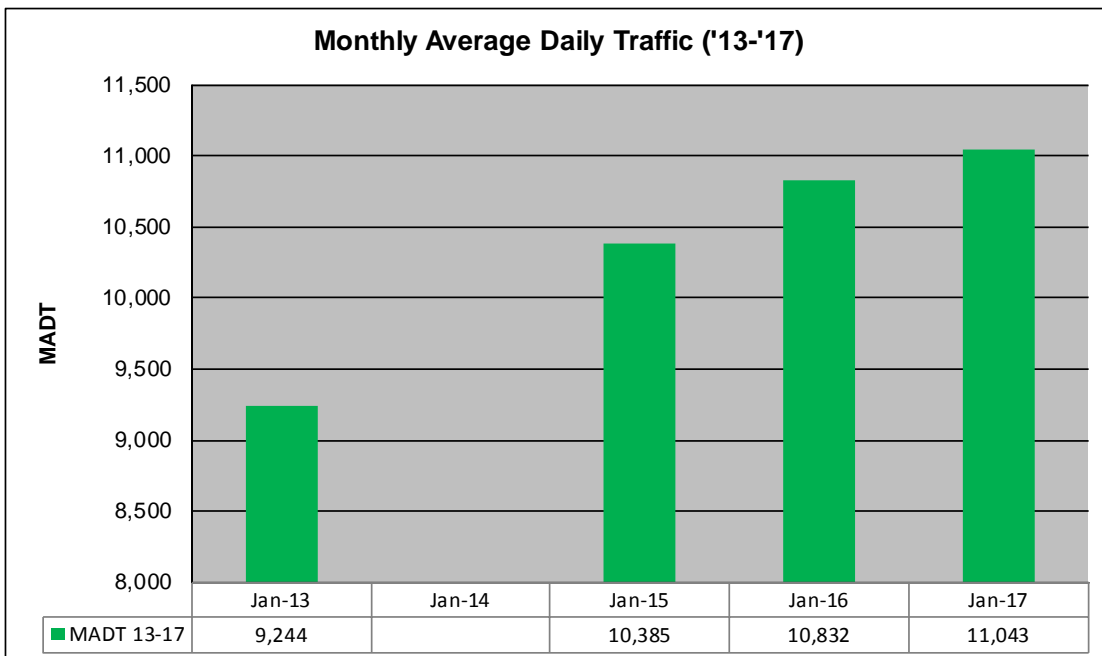
# MONTHLY REPORT, STATION NO. 45 (WIM)

## JANUARY 2017

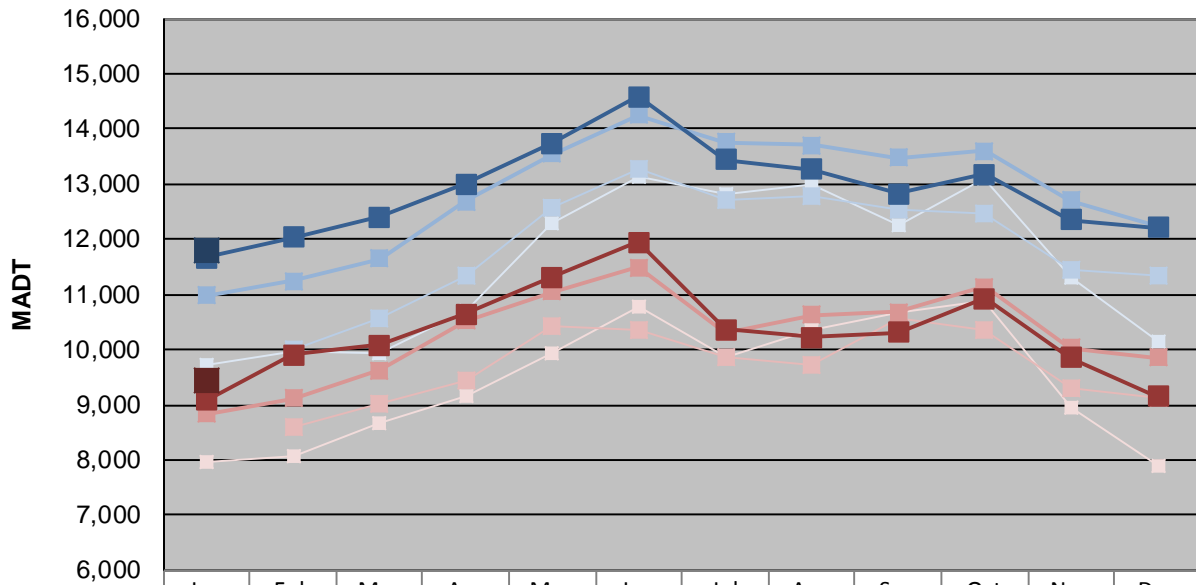
|  |                      |                                    |
|--|----------------------|------------------------------------|
| Station Measurement: VOLUME/SPEED/CLASS/WEIGHT           |                      |                                    |
| Route: CSAH 14   | Route Direction: E/W | Lanes: 2                           |
| County: Anoka  | Closest City: Blaine |                                    |
| Functional Class: Urban Other Principal Arterial         |                      |                                    |
| Location: .7 MI W OF CSAH17 (LEXINGTON AVE NE) IN BLAINE |                      |                                    |
| Ref Post: 010+00.100                                     | True Mile: 10.1      | Sequence No. 9893                  |
| <b>Volume: 342,335</b>                                   |                      | <b>MADT: 11,043</b>                |
| <b>Weekday (M-F) MADT: 9,432</b>                         |                      | <b>Weekend (Sa-Su) MADT: 9,432</b> |



Note: No data January 2014 due to site issues... Volume data reported as ATR 422 during 2013



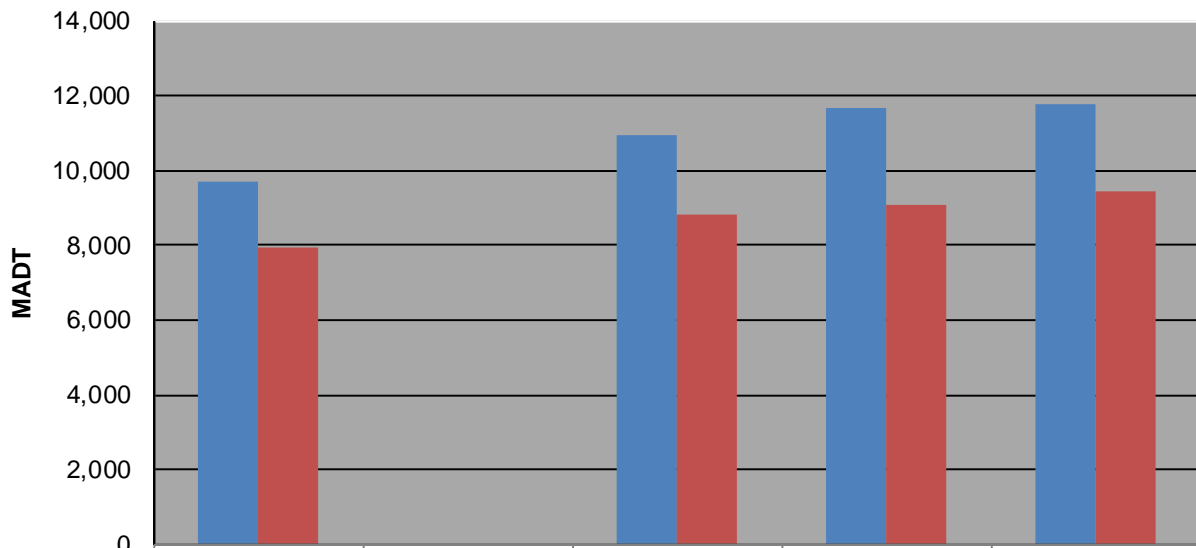
### Weekday (WD)/Weekend (WE) Monthly Average Daily Traffic



|        | Jan    | Feb    | Mar    | Apr    | May    | Jun    | Jul    | Aug    | Sep    | Oct    | Nov    | Dec    |
|--------|--------|--------|--------|--------|--------|--------|--------|--------|--------|--------|--------|--------|
| '13 WD | 9,708  | 9,970  | 9,940  | 10,716 | 12,308 | 13,132 | 12,832 | 12,986 | 12,260 | 13,110 | 11,294 | 10,152 |
| '13 WE | 7,966  | 8,080  | 8,666  | 9,166  | 9,950  | 10,762 | 9,880  | 10,352 | 10,678 | 10,892 | 8,954  | 7,908  |
| '14 WD |        | 10,014 | 10,566 | 11,346 | 12,570 | 13,270 | 12,710 | 12,786 | 12,538 | 12,468 | 11,452 | 11,352 |
| '14 WE |        | 8,614  | 9,008  | 9,434  | 10,410 | 10,356 | 9,862  | 9,724  | 10,576 | 10,356 | 9,302  | 9,128  |
| '15 WD | 10,972 | 11,240 | 11,650 | 12,678 | 13,544 | 14,254 | 13,754 | 13,700 | 13,478 | 13,608 | 12,712 | 12,232 |
| '15 WE | 8,836  | 9,116  | 9,632  | 10,530 | 11,044 | 11,498 | 10,312 | 10,630 | 10,686 | 11,144 | 10,032 | 9,862  |
| '16 WD | 11,670 | 12,042 | 12,406 | 13,004 | 13,748 | 14,588 | 13,436 | 13,260 | 12,826 | 13,182 | 12,360 | 12,206 |
| '16 WE | 9,076  | 9,912  | 10,076 | 10,640 | 11,308 | 11,940 | 10,364 | 10,216 | 10,310 | 10,928 | 9,856  | 9,150  |
| '17 WD | 11,788 |        |        |        |        |        |        |        |        |        |        |        |
| '17 WE | 9,432  |        |        |        |        |        |        |        |        |        |        |        |

Note: 'Weekday' defined as Monday-Friday, 'Weekend' defined as Saturday-Sunday

### Weekday/Weekend Monthly Average Daily Traffic ('13-'17)



|         | Jan-13 | Jan-14 | Jan-15 | Jan-16 | Jan-17 |
|---------|--------|--------|--------|--------|--------|
| Weekday | 9,708  |        | 10,972 | 11,670 | 11,788 |
| Weekend | 7,966  |        | 8,836  | 9,076  | 9,432  |