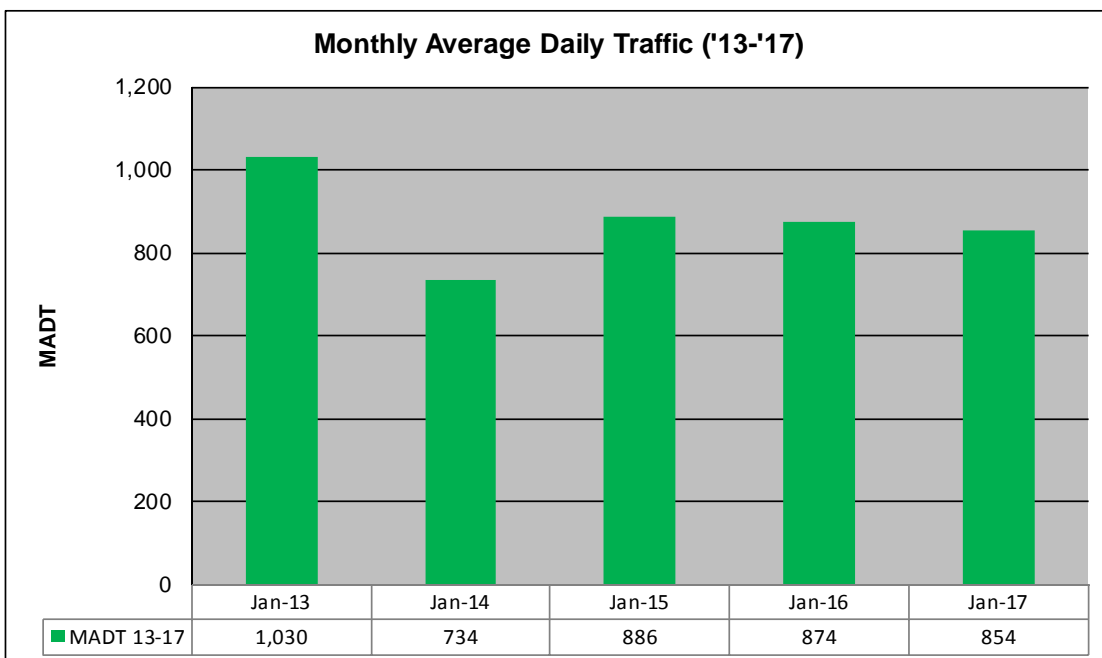
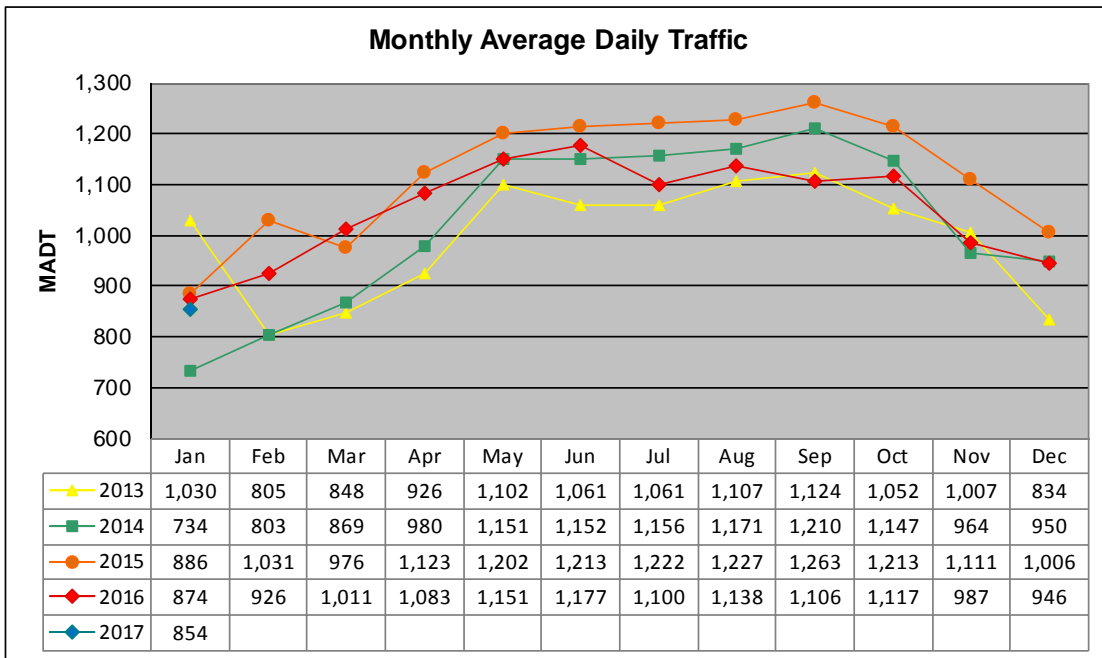


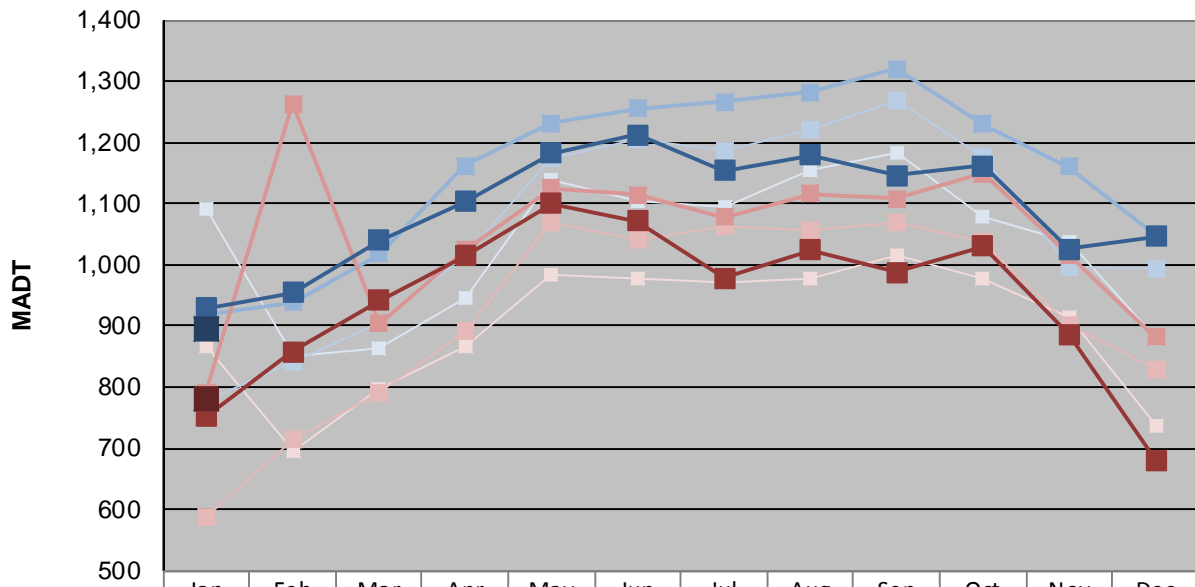
MONTHLY REPORT, STATION NO. 229 (ATR)

JANUARY 2017

| | | |
|---|--------------------------|----------------------------------|
| Station Measurement: VOLUME/SPEED/CLASS | | |
| Route: CSAH 18 | Route Direction: E/W | Lanes: 2 |
| County: McLeod | Closest City: Hutchinson | |
| Functional Class: Rural Major Collector | | |
| Location: 4.3 MI W OF CSAH7, SW OF HUTCHINSON | | |
| Ref Post: 000+00.535 | True Mile: 0.535 | Sequence No. 19125 |
| Volume: 26,474 | | MADT: 854 |
| Weekday (M-F) MADT: 894 | | Weekend (Sa-Su) MADT: 782 |



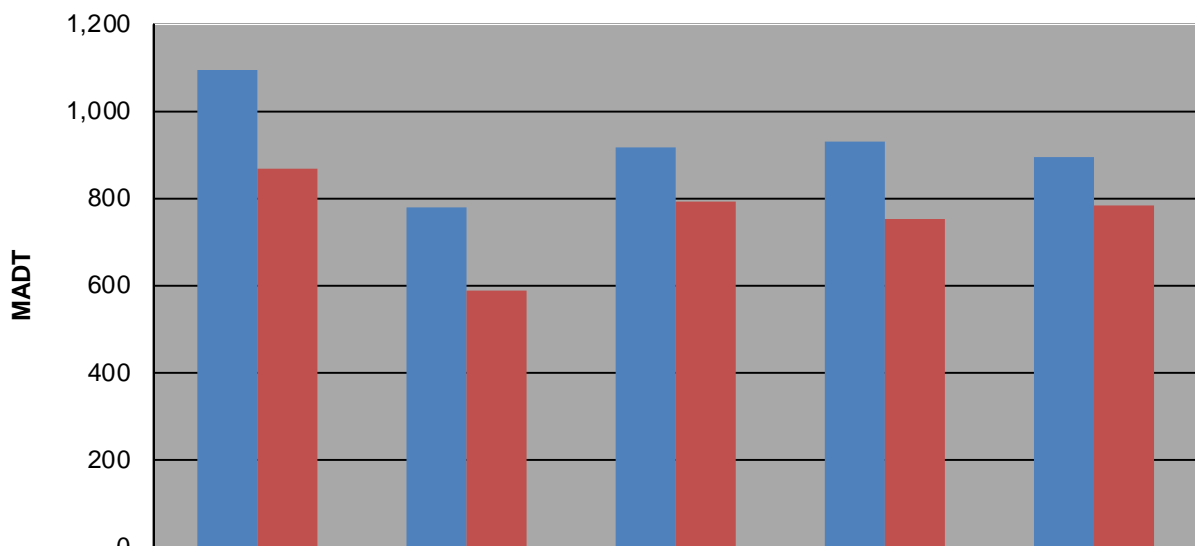
Weekday (WD)/Weekend (WE) Monthly Average Daily Traffic



| | Jan | Feb | Mar | Apr | May | Jun | Jul | Aug | Sep | Oct | Nov | Dec |
|--------|-------|-------|-------|-------|-------|-------|-------|-------|-------|-------|-------|-------|
| '13 WD | 1,092 | 850 | 864 | 946 | 1,138 | 1,104 | 1,094 | 1,156 | 1,182 | 1,080 | 1,038 | 878 |
| '13 WE | 868 | 696 | 796 | 866 | 984 | 976 | 970 | 978 | 1,014 | 976 | 914 | 738 |
| '14 WD | 778 | 840 | 906 | 1,014 | 1,174 | 1,204 | 1,186 | 1,222 | 1,270 | 1,178 | 998 | 994 |
| '14 WE | 588 | 714 | 792 | 892 | 1,070 | 1,040 | 1,064 | 1,056 | 1,070 | 1,038 | 900 | 830 |
| '15 WD | 918 | 938 | 1,018 | 1,162 | 1,232 | 1,256 | 1,266 | 1,282 | 1,320 | 1,230 | 1,160 | 1,048 |
| '15 WE | 790 | 1,264 | 904 | 1,024 | 1,126 | 1,114 | 1,078 | 1,116 | 1,108 | 1,150 | 1,016 | 882 |
| '16 WD | 930 | 954 | 1,040 | 1,104 | 1,182 | 1,212 | 1,154 | 1,180 | 1,146 | 1,162 | 1,026 | 1,046 |
| '16 WE | 752 | 858 | 942 | 1,014 | 1,100 | 1,072 | 978 | 1,024 | 988 | 1,030 | 886 | 680 |
| '17 WD | 894 | | | | | | | | | | | |
| '17 WE | 782 | | | | | | | | | | | |

Note: 'Weekday' defined as Monday-Friday, 'Weekend' defined as Saturday-Sunday

Weekday/Weekend Monthly Average Daily Traffic ('13-'17)



| | Jan-13 | Jan-14 | Jan-15 | Jan-16 | Jan-17 |
|---------|--------|--------|--------|--------|--------|
| Weekday | 1,092 | 778 | 918 | 930 | 894 |
| Weekend | 868 | 588 | 790 | 752 | 782 |