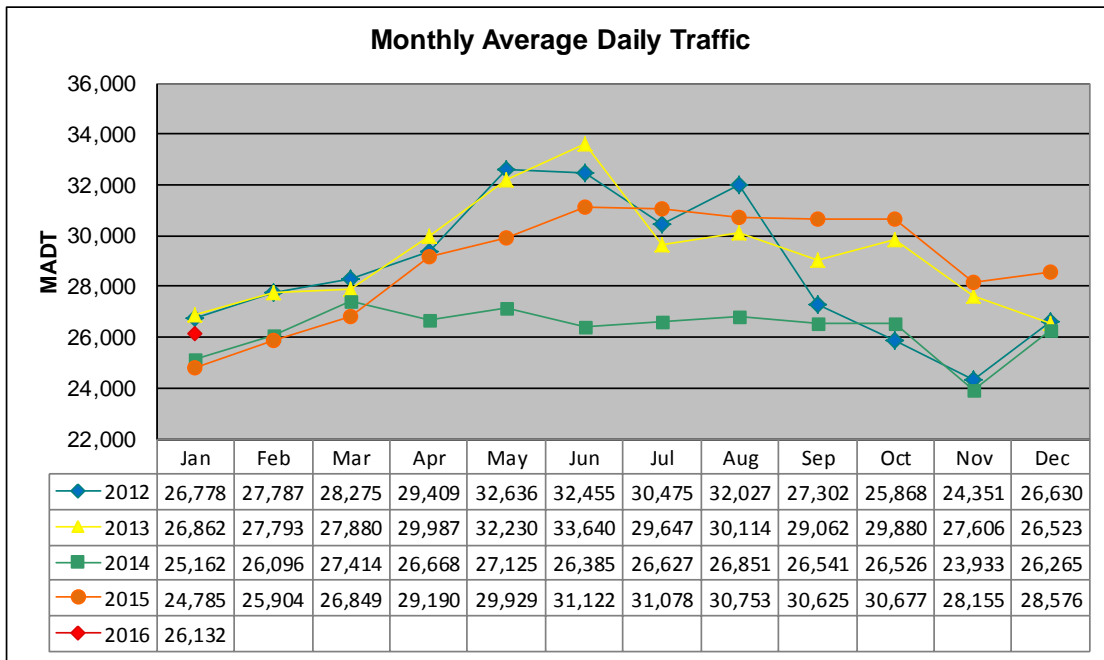


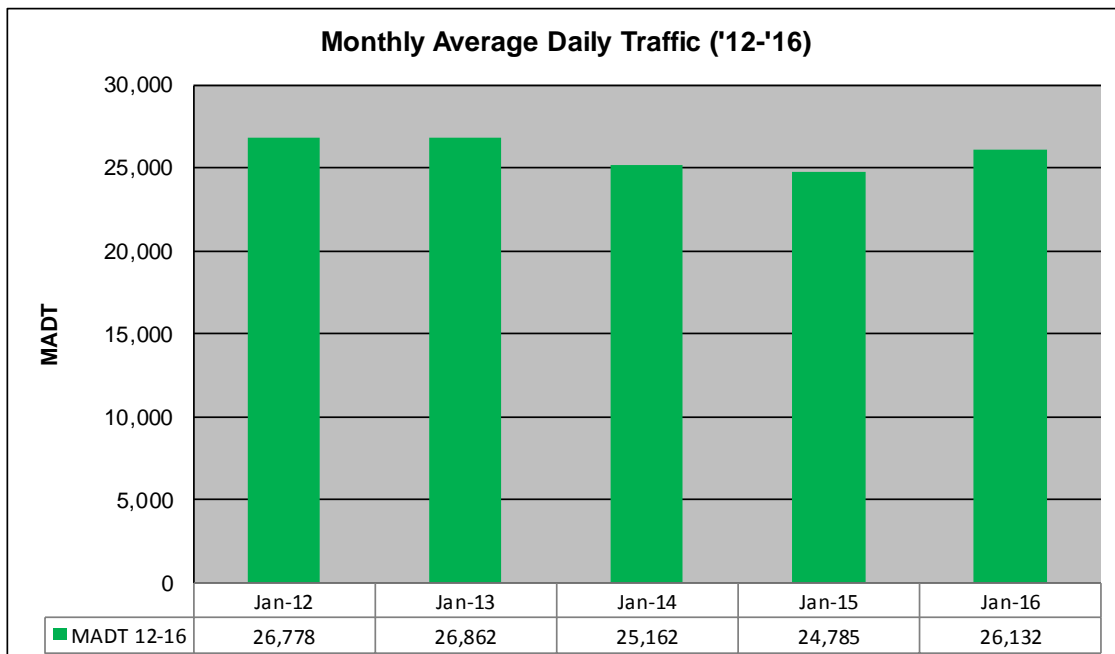
# MONTHLY REPORT, STATION NO. 384 (ATR)

## JANUARY 2016

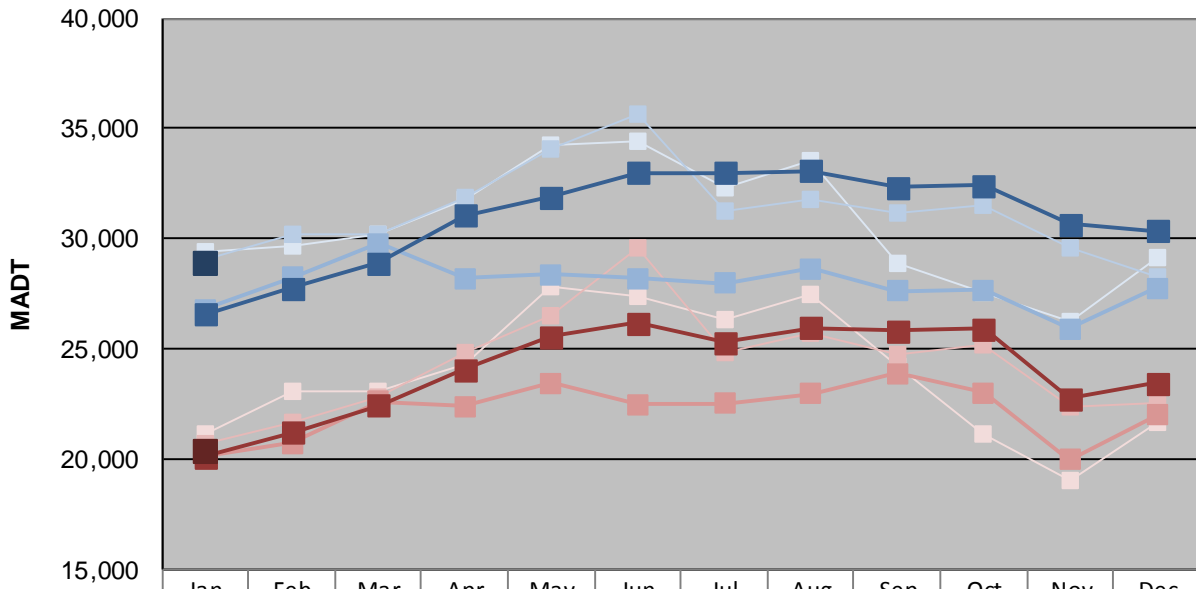
Station Measurement: VOLUME/SPEED/CLASS		
Route: TH 36	Route Direction: E/W	Lanes: 4
County: Washington		Closest City: Stillwater
Functional Class: Urban Other Principal Arterial		
Location: W OF WASHINGTON AVE IN STILLWATER		
Ref Post: 201+00.824	True Mile: 18.153	Sequence No. 9873
<b>Volume: 810,086</b>		<b>MADT: 26,132</b>
<b>Weekday (M-F) MADT: 28,896</b>		<b>Weekend (Sa-Su) MADT: 20,380</b>



Note: Decrease in traffic September to December 2012, April to November 2014, and May 2015 due to construction on TH 36



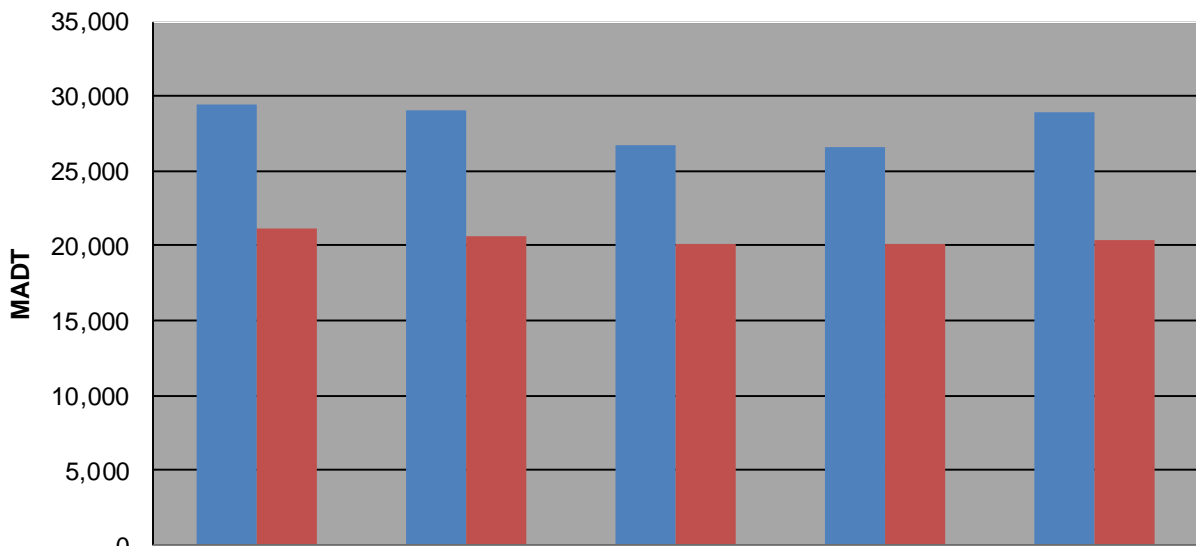
### Weekday (WD)/Weekend (WE) Monthly Average Daily Traffic



	Jan	Feb	Mar	Apr	May	Jun	Jul	Aug	Sep	Oct	Nov	Dec
'12 WD	29,390	29,628	30,180	31,810	34,288	34,430	32,290	33,524	28,842	27,574	26,270	29,122
'12 WE	21,124	23,084	23,086	24,282	27,794	27,396	26,368	27,464	24,222	21,168	19,032	21,692
'13 WD	29,060	30,236	30,182	31,888	34,052	35,674	31,294	31,744	31,198	31,518	29,552	28,266
'13 WE	20,668	21,684	22,804	24,798	26,526	29,574	24,870	25,680	24,766	25,214	22,414	22,588
'14 WD	26,774	28,250	29,780	28,214	28,394	28,210	27,972	28,644	27,628	27,672	25,900	27,738
'14 WE	20,120	20,712	22,606	22,400	23,454	22,466	22,544	22,986	23,892	23,000	19,996	22,008
'15 WD	26,570	27,778	28,902	31,044	31,878	33,002	32,998	33,096	32,346	32,428	30,662	30,332
'15 WE	20,090	21,218	22,436	24,054	25,566	26,176	25,292	25,934	25,830	25,916	22,744	23,454
'16 WD	28,896											
'16 WE	20,380											

Note: 'Weekday' defined as Monday-Friday, 'Weekend' defined as Saturday-Sunday

### Weekday/Weekend Monthly Average Daily Traffic ('12-'16)



	Jan-12	Jan-13	Jan-14	Jan-15	Jan-16
Weekday	29,390	29,060	26,774	26,570	28,896
Weekend	21,124	20,668	20,120	20,090	20,380