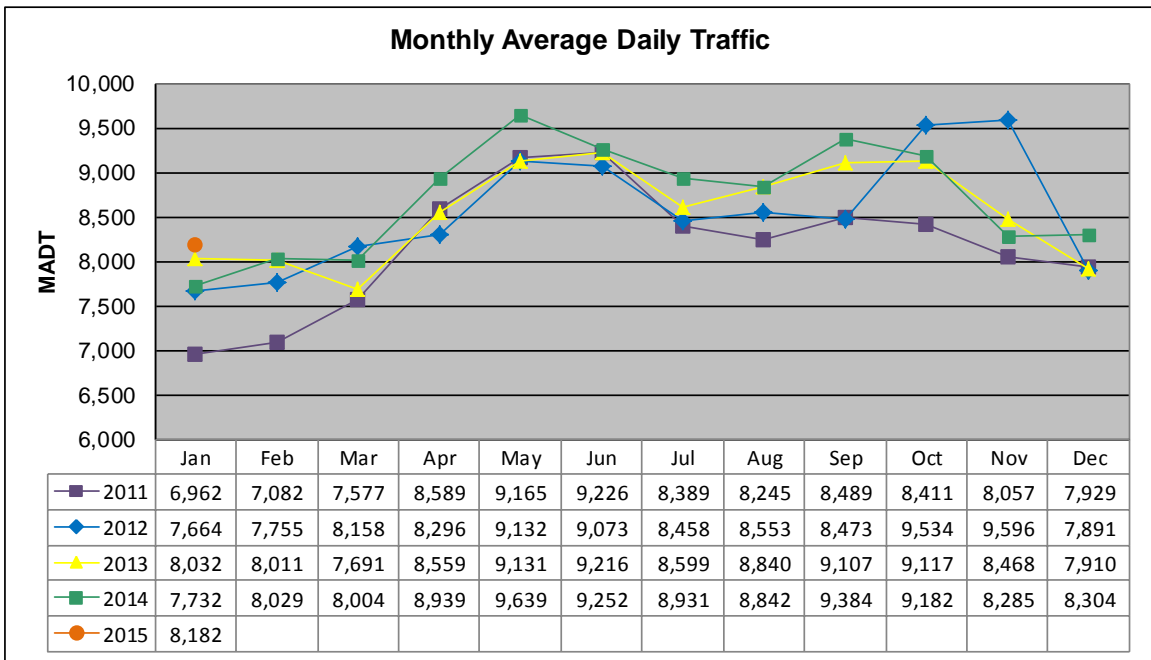


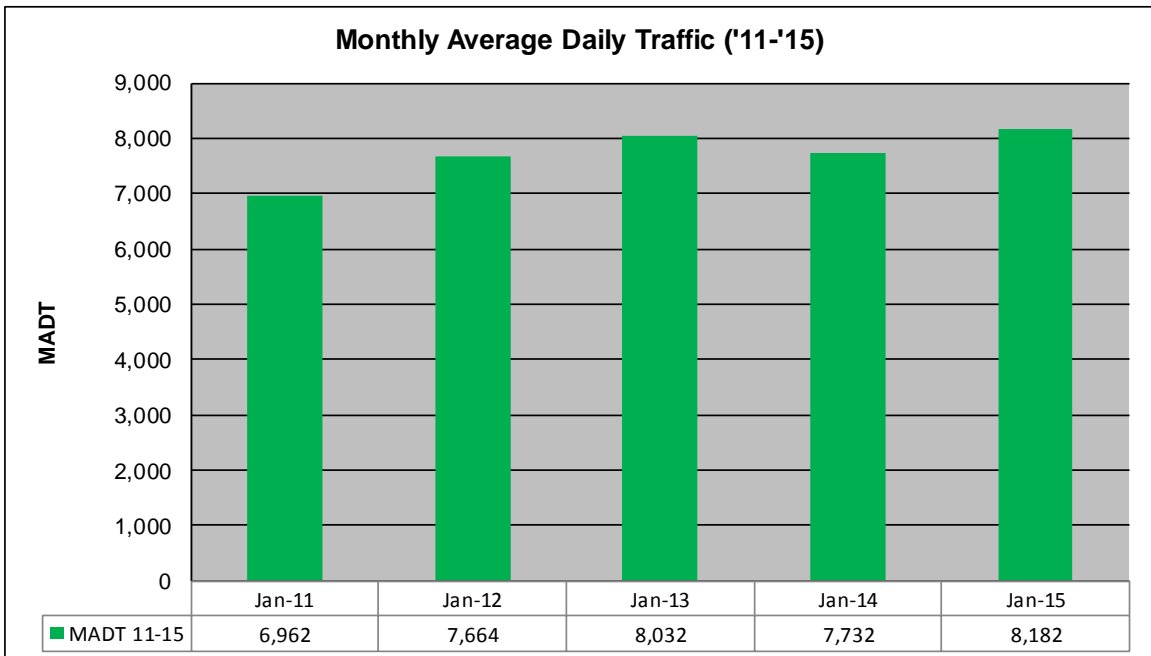
MONTHLY REPORT, STATION NO. 458 (ATR)

JANUARY 2015

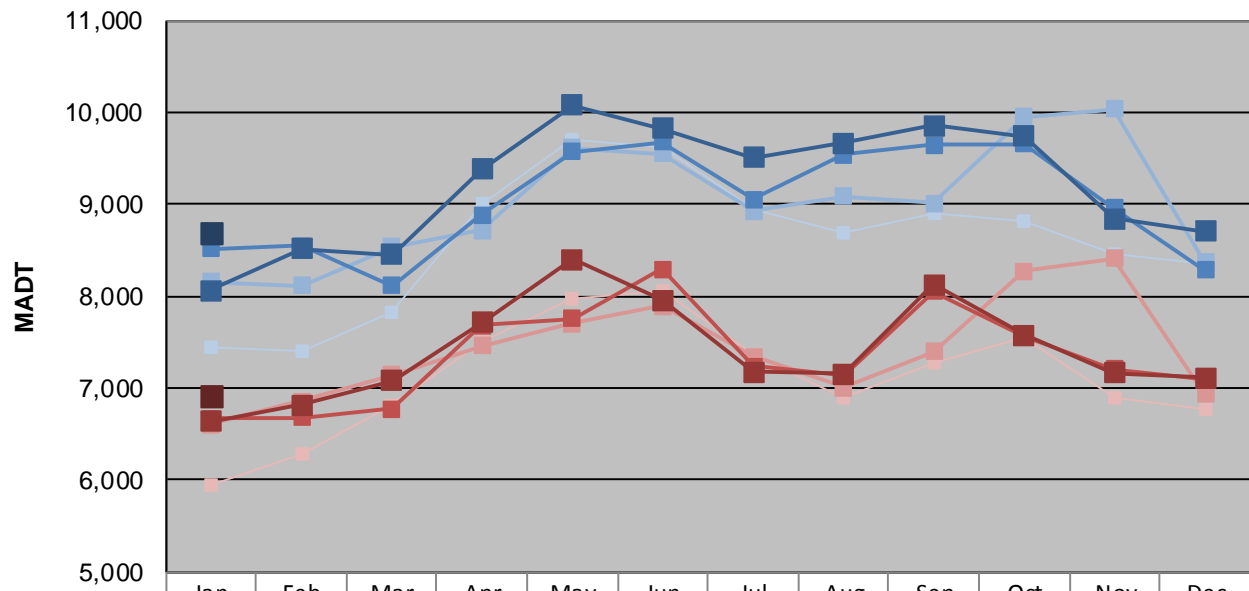
Station Measurement: VOLUME/SPEED/CLASS		
Route: MSAS 108	Route Direction: E/W	Lanes: 2
County: Carver	Closest City: Chaska	
Functional Class: Urban Local		
Location: .3 MI W OF TH41 IN CHASKA		
Ref Post: 001+00.210	True Mile: 1.21	Sequence No. 9907
Volume: 253,632		MADT: 8,182
Weekday (M-F) MADT: 8,682		Weekend (Sa-Su) MADT: 6,914



Note: Decrease in traffic August 2010 due to construction on MSAS 108... Increase in traffic November 2012 due to detour from TH 212



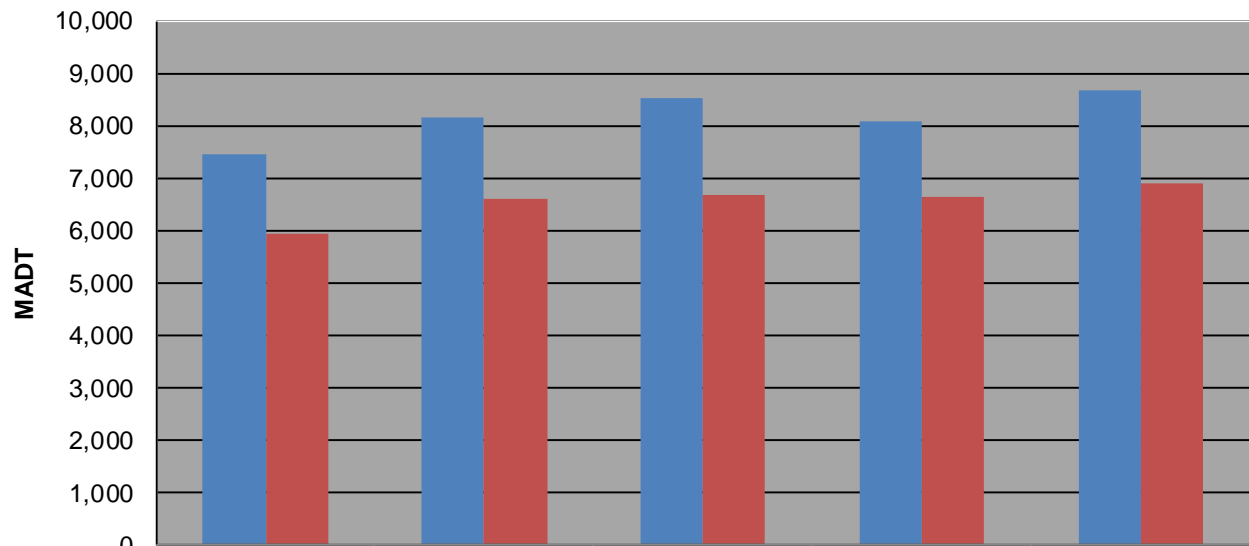
Weekday (WD)/Weekend (WE) Monthly Average Daily Traffic



	Jan	Feb	Mar	Apr	May	Jun	Jul	Aug	Sep	Oct	Nov	Dec
'11 WD	7,448	7,392	7,834	8,998	9,708	9,616	8,942	8,698	8,896	8,808	8,454	8,342
'11 WE	5,950	6,282	6,814	7,500	7,978	8,066	7,368	6,888	7,266	7,550	6,886	6,760
'12 WD	8,152	8,110	8,538	8,718	9,610	9,548	8,924	9,082	9,014	9,950	10,036	8,368
'12 WE	6,606	6,858	7,146	7,456	7,702	7,892	7,342	7,008	7,392	8,272	8,408	6,930
'13 WD	8,512	8,546	8,114	8,886	9,574	9,678	9,052	9,538	9,640	9,656	8,962	8,282
'13 WE	6,674	6,676	6,774	7,682	7,760	8,296	7,240	7,134	8,054	7,564	7,212	7,086
'14 WD	8,066	8,514	8,456	9,386	10,078	9,826	9,504	9,666	9,860	9,742	8,844	8,702
'14 WE	6,634	6,820	7,076	7,716	8,402	7,958	7,178	7,158	8,124	7,580	7,170	7,108
'15 WD	8,682											
'15 WE	6,914											

Note: 'Weekday' defined as Monday-Friday, 'Weekend' defined as Saturday-Sunday

Weekday/Weekend Monthly Average Daily Traffic ('11-'15)



	Jan-11	Jan-12	Jan-13	Jan-14	Jan-15
Weekday	7,448	8,152	8,512	8,066	8,682
Weekend	5,950	6,606	6,674	6,634	6,914