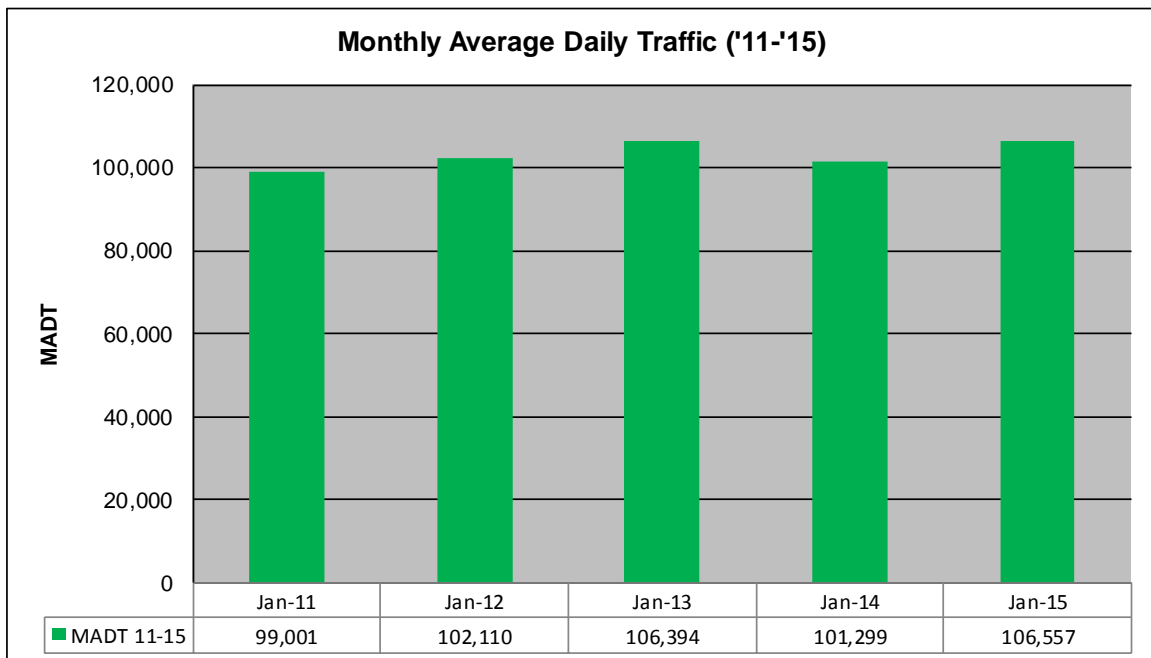
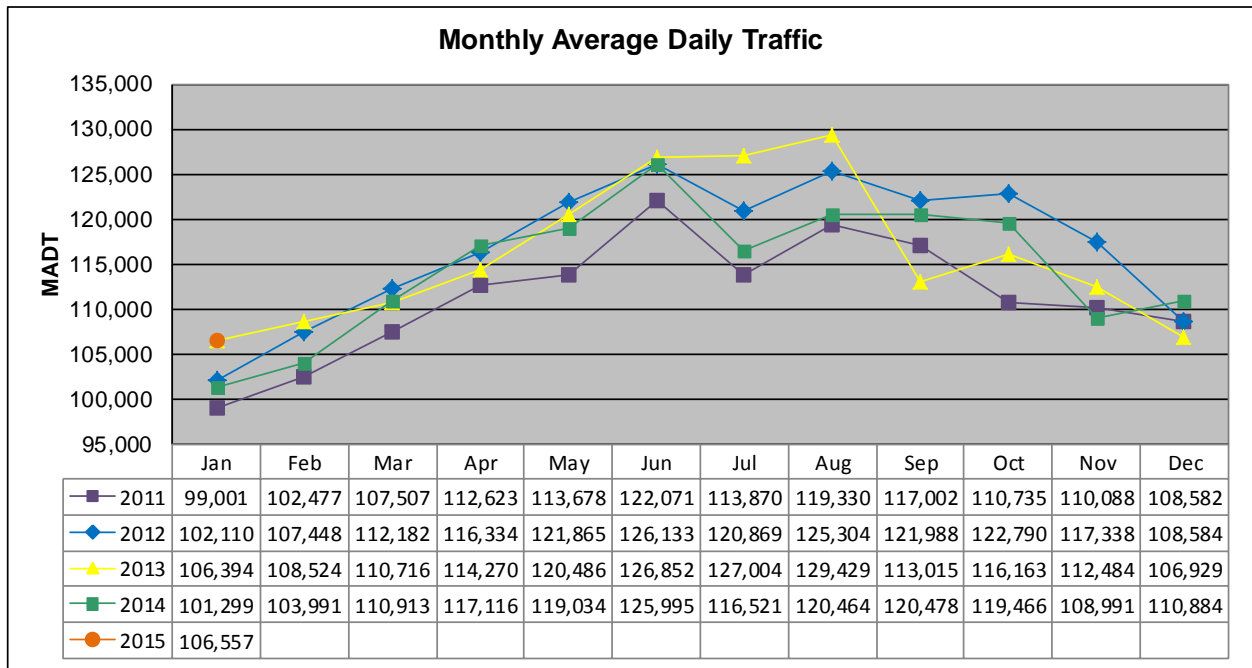


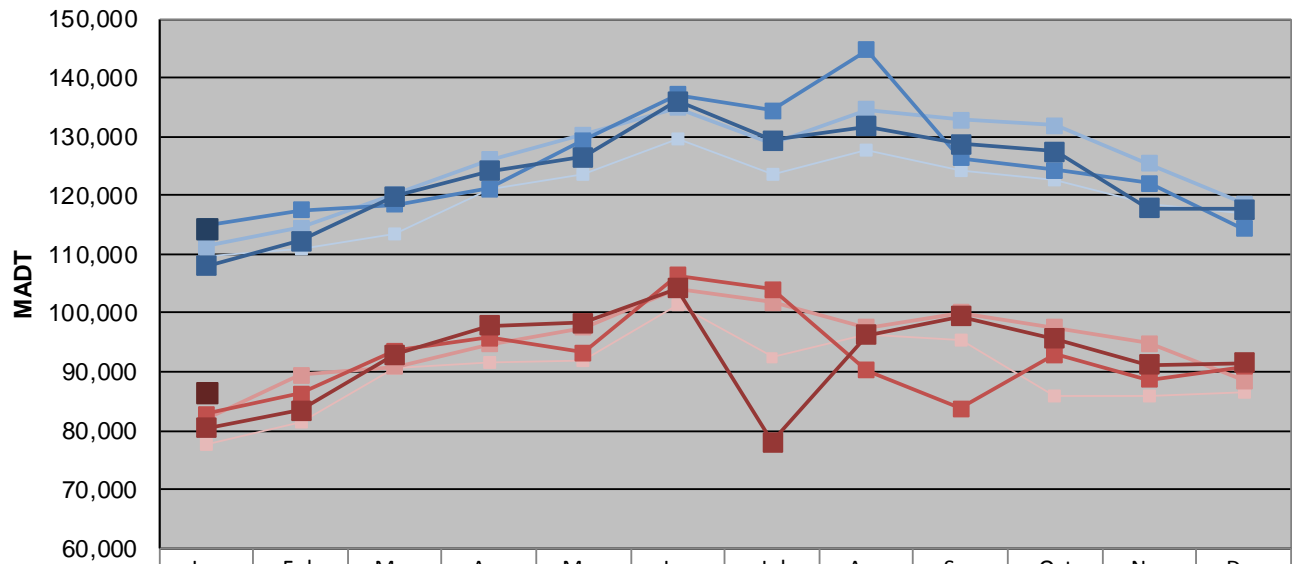
# MONTHLY REPORT, STATION NO. 315 (ATR)

## JANUARY 2015

|   |                      |                                     |
|---|----------------------|-------------------------------------|
| Station Measurement: VOLUME                             |                      |                                     |
| Route: I-35W  | Route Direction: N/S | Lanes: 6                            |
| County: Hennepin  |                      | Closest City: Bloomington           |
| Functional Class: Urban Principal Arterial - Interstate |                      |                                     |
| Location: N OF MN RIVER BRIDGE IN BLOOMINGTON           |                      |                                     |
| Ref Post: 004+00.500                                    | True Mile: 4.55      | Sequence No. 9843                   |
| <b>Volume: 3,303,252</b>                                |                      | <b>MADT: 106,557</b>                |
| <b>Weekday (M-F) MADT: 114,400</b>                      |                      | <b>Weekend (Sa-Su) MADT: 86,380</b> |



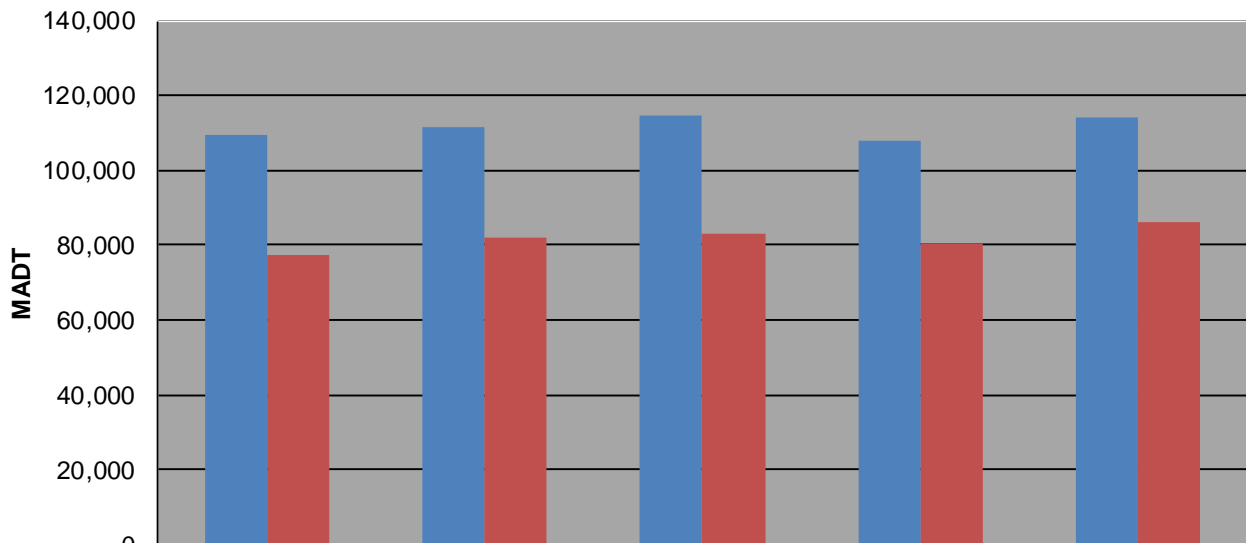
### Weekday (WD)/Weekend (WE) Monthly Average Daily Traffic



|        | Jan     | Feb     | Mar     | Apr     | May     | Jun     | Jul     | Aug     | Sep     | Oct     | Nov     | Dec     |
|--------|---------|---------|---------|---------|---------|---------|---------|---------|---------|---------|---------|---------|
| '11 WD | 109,596 | 110,914 | 113,540 | 121,030 | 123,434 | 129,472 | 123,728 | 127,650 | 124,220 | 122,732 | 118,674 | 116,900 |
| '11 WE | 77,608  | 81,360  | 90,632  | 91,696  | 91,868  | 101,462 | 92,470  | 96,312  | 95,542  | 86,052  | 85,794  | 86,552  |
| '12 WD | 111,306 | 114,452 | 120,104 | 126,114 | 130,234 | 134,840 | 128,810 | 134,654 | 132,908 | 131,874 | 125,456 | 118,666 |
| '12 WE | 81,834  | 89,460  | 90,948  | 94,732  | 97,526  | 104,268 | 101,802 | 97,532  | 100,148 | 97,580  | 94,898  | 88,498  |
| '13 WD | 114,730 | 117,442 | 118,412 | 121,070 | 129,364 | 137,078 | 134,486 | 144,776 | 126,416 | 124,228 | 122,080 | 114,264 |
| '13 WE | 82,864  | 86,228  | 93,540  | 95,780  | 93,210  | 106,402 | 104,066 | 90,204  | 83,706  | 92,990  | 88,602  | 90,924  |
| '14 WD | 108,020 | 112,210 | 119,784 | 124,124 | 126,566 | 136,052 | 129,416 | 131,814 | 128,674 | 127,480 | 117,880 | 117,622 |
| '14 WE | 80,430  | 83,444  | 92,956  | 97,924  | 98,366  | 104,160 | 78,096  | 96,256  | 99,436  | 95,658  | 91,212  | 91,600  |
| '15 WD | 114,400 |         |         |         |         |         |         |         |         |         |         |         |
| '15 WE | 86,380  |         |         |         |         |         |         |         |         |         |         |         |

Note: 'Weekday' defined as Monday-Friday, 'Weekend' defined as Saturday-Sunday

### Weekday/Weekend Monthly Average Daily Traffic ('11-'15)



|         | Jan-11  | Jan-12  | Jan-13  | Jan-14  | Jan-15  |
|---------|---------|---------|---------|---------|---------|
| Weekday | 109,596 | 111,306 | 114,730 | 108,020 | 114,400 |
| Weekend | 77,608  | 81,834  | 82,864  | 80,430  | 86,380  |