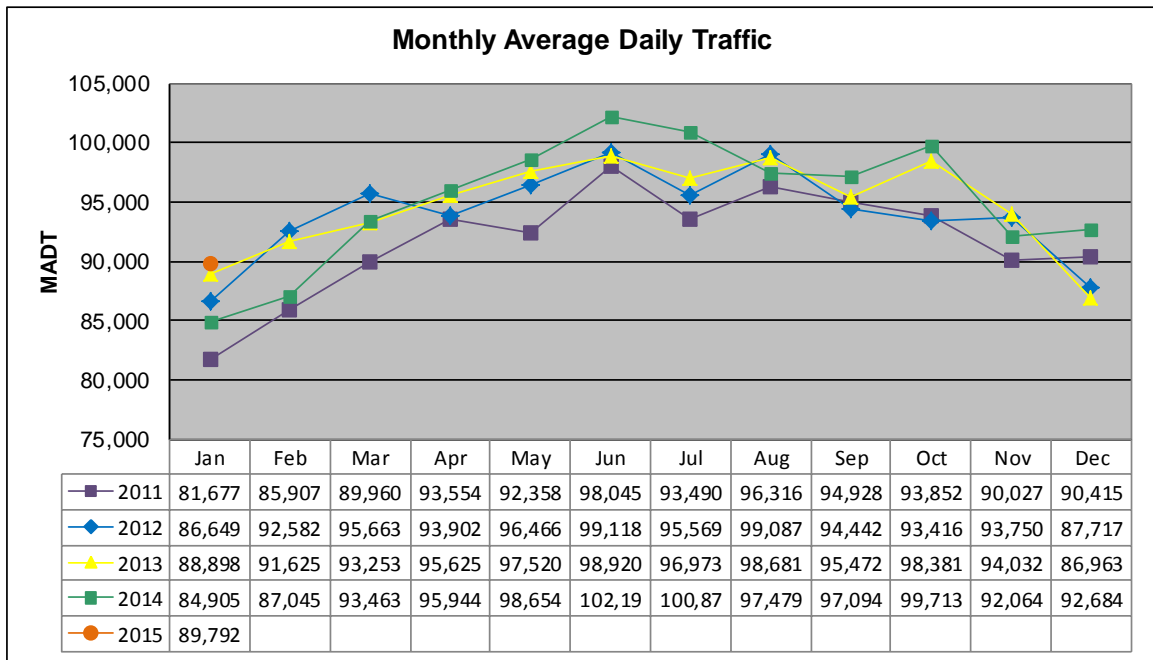


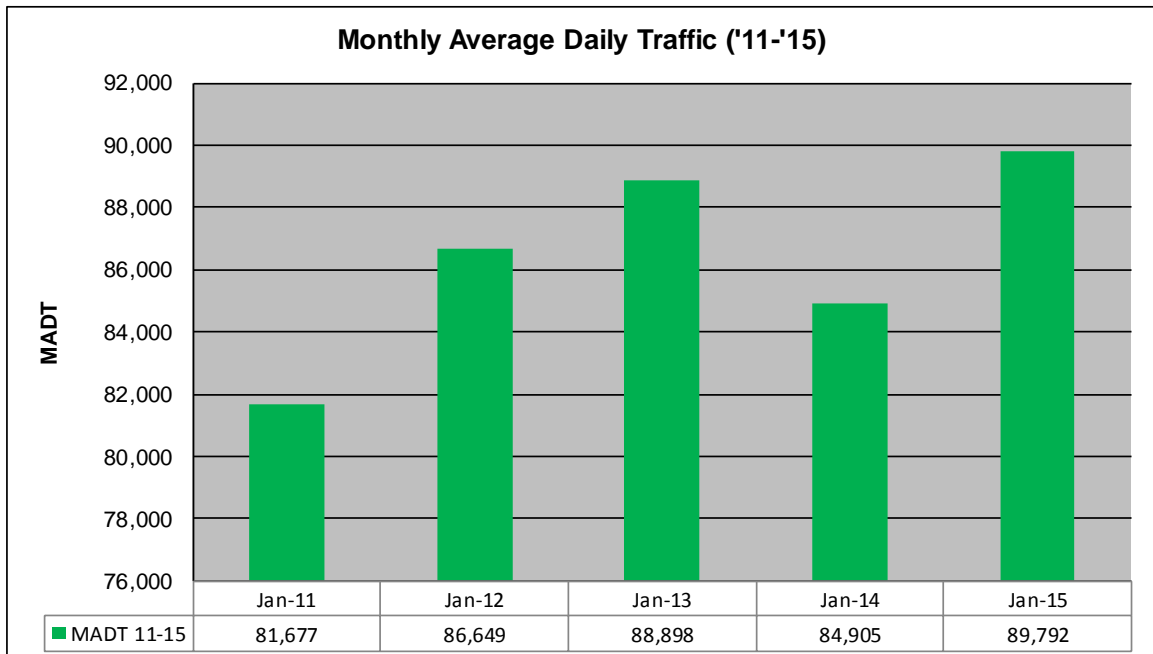
MONTHLY REPORT, STATION NO. 309 (ATR)

JANUARY 2015

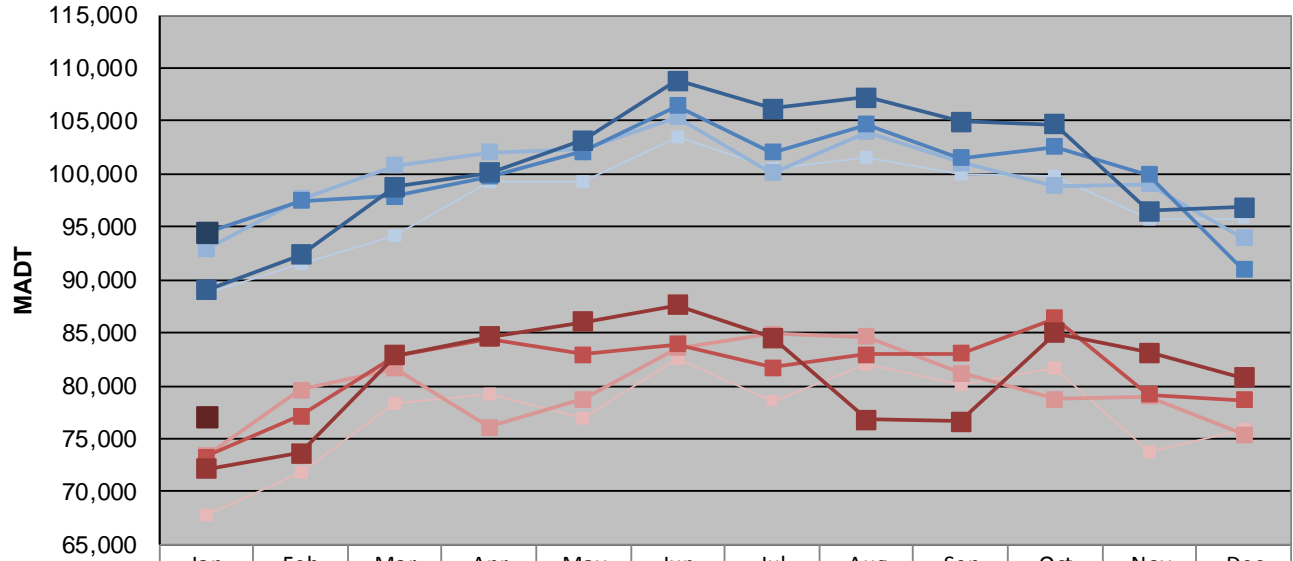
Station Measurement: VOLUME		
Route: TH 65	Route Direction: N/S	Lanes: 6
County: Hennepin		Closest City: Minneapolis
Functional Class: Urban Minor Arterial		
Location: S OF CSAH 5 (E FRANKLIN AVE) IN MINNEAPOLIS		
Ref Post: 000+00.480	True Mile: 0.48	Sequence No. 9838
Volume: 2,783,545		MADT: 89,792
Weekday (M-F) MADT: 94,596		Weekend (Sa-Su) MADT: 77,108



Note: Decrease in traffic 2008-2009 due to I-35W bridge collapse and construction on TH 62... Although traffic increased from 2009 to 2010, volumes were lower than expected due to construction on I-35W and TH 62



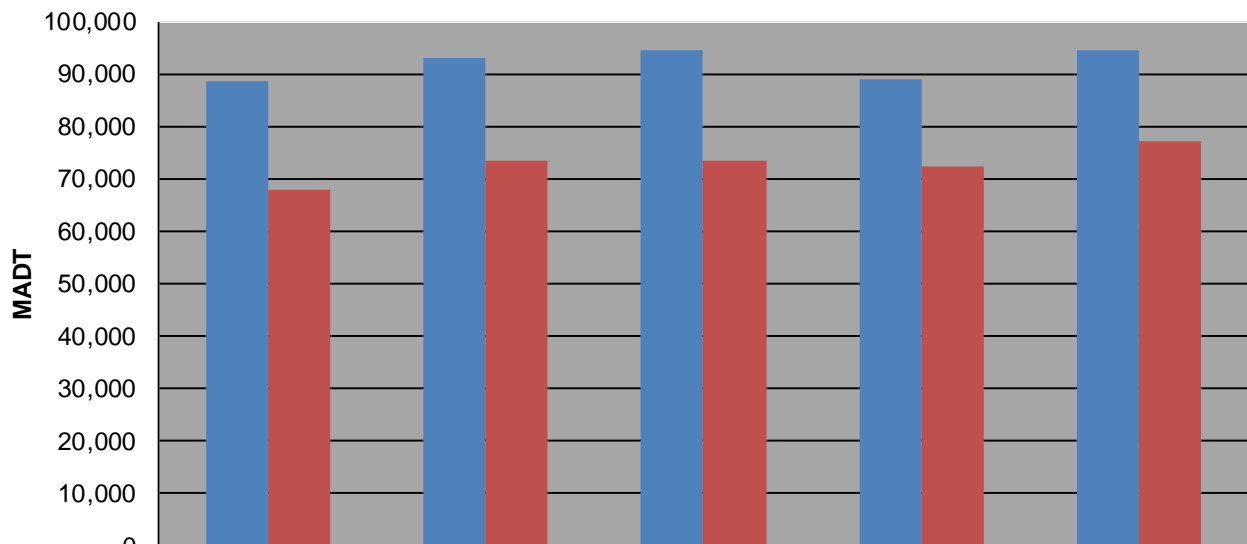
Weekday (WD)/Weekend (WE) Monthly Average Daily Traffic



	Jan	Feb	Mar	Apr	May	Jun	Jul	Aug	Sep	Oct	Nov	Dec
'11 WD	88,724	91,542	94,104	99,192	99,328	103,524	100,430	101,516	99,974	99,858	95,792	95,786
'11 WE	67,784	71,794	78,362	79,268	76,928	82,578	78,590	82,114	80,026	81,762	73,722	75,806
'12 WD	92,882	97,624	100,822	102,040	102,392	105,360	100,084	103,934	101,050	98,834	99,032	93,974
'12 WE	73,406	79,596	81,592	76,054	78,704	83,610	84,858	84,582	81,230	78,700	78,996	75,418
'13 WD	94,380	97,426	97,926	99,764	102,162	106,436	102,012	104,710	101,548	102,578	99,902	90,962
'13 WE	73,278	77,124	82,752	84,464	82,974	83,890	81,746	82,922	83,026	86,350	79,146	78,670
'14 WD	88,992	92,406	98,826	100,088	103,198	108,808	106,164	107,210	104,948	104,634	96,510	96,860
'14 WE	72,118	73,646	82,852	84,638	86,040	87,650	84,574	76,808	76,656	84,934	83,170	80,730
'15 WD	94,596											
'15 WE	77,108											

Note: 'Weekday' defined as Monday-Friday, 'Weekend' defined as Saturday-Sunday

Weekday/Weekend Monthly Average Daily Traffic ('11-'15)



	Jan-11	Jan-12	Jan-13	Jan-14	Jan-15
Weekday	88,724	92,882	94,380	88,992	94,596
Weekend	67,784	73,406	73,278	72,118	77,108