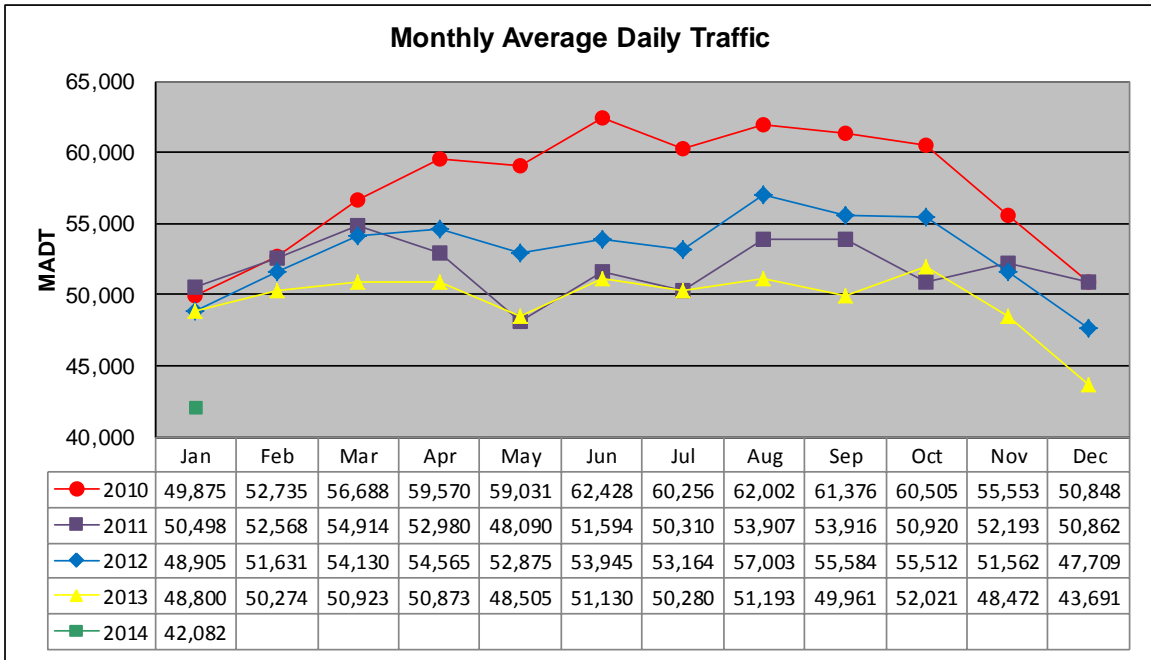


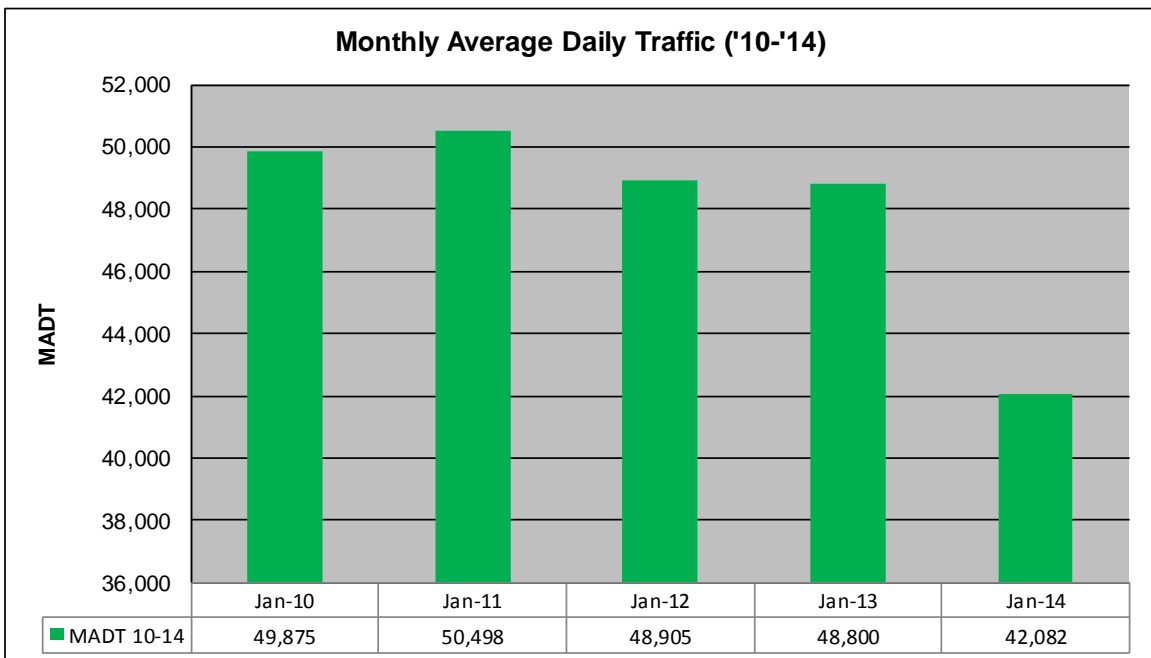
# MONTHLY REPORT, STATION NO. 40 (WIM)

## JANUARY 2014

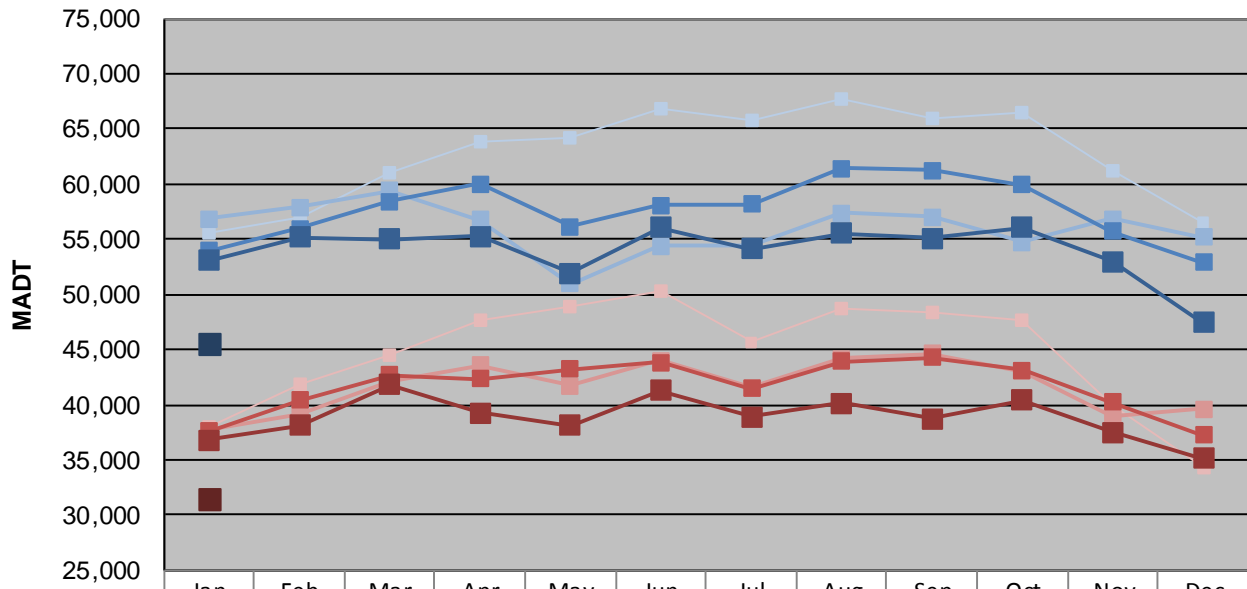
Station Measurement: VOLUME/SPEED/CLASS/WEIGHT		
Route: TH 52	Route Direction: N/S	Lanes: 4
County: Dakota		Closest City: West St Paul
Functional Class: Urban Principal Arterial - Other Freeways or Expressways		
Location: .5 MI N OF CSAH14 (SOUTHVIEW BLVD) IN W ST PAUL		
Ref Post: 126+00.677	True Mile: 127.015	Sequence No. 11537
<b>Volume: 1,304,553</b>		<b>MADT: 42,082</b>
<b>Weekday (M-F) MADT: 45,576</b>		<b>Weekend (Sa-Su) MADT: 31,400</b>



Note: Decrease in traffic April 2011 to date due to major construction on TH 52



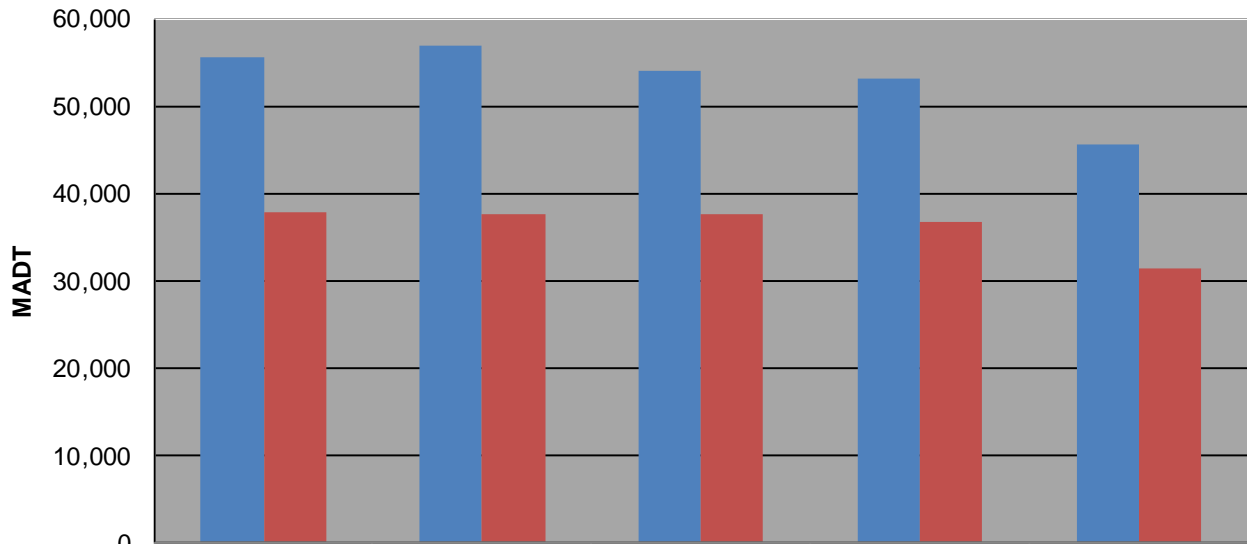
### Weekday (WD)/Weekend (WE) Monthly Average Daily Traffic



	Jan	Feb	Mar	Apr	May	Jun	Jul	Aug	Sep	Oct	Nov	Dec
'10 WD	55,630	57,056	61,046	63,806	64,158	66,876	65,838	67,688	65,906	66,408	61,276	56,464
'10 WE	37,926	41,936	44,538	47,584	48,824	50,216	45,688	48,744	48,416	47,744	39,832	34,368
'11 WD	56,858	57,938	59,436	56,790	50,968	54,350	54,400	57,392	57,034	54,752	56,872	55,172
'11 WE	37,678	39,144	42,138	43,548	41,696	43,992	41,528	44,186	44,586	43,060	38,972	39,634
'12 WD	53,960	55,954	58,452	60,020	56,150	58,072	58,194	61,432	61,244	59,904	55,686	52,898
'12 WE	37,616	40,422	42,728	42,346	43,200	43,830	41,416	43,938	44,264	43,172	40,210	37,250
'13 WD	53,038	55,136	55,024	55,224	51,922	56,058	54,092	55,490	55,102	56,064	52,958	47,412
'13 WE	36,768	38,118	41,850	39,254	38,080	41,270	38,920	40,112	38,748	40,362	37,526	35,088
'14 WD	45,576											
'14 WE	31,400											

Note: 'Weekday' defined as Monday-Friday, 'Weekend' defined as Saturday-Sunday

### Weekday/Weekend Monthly Average Daily Traffic ('10-'14)



	Jan-10	Jan-11	Jan-12	Jan-13	Jan-14
Weekday	55,630	56,858	53,960	53,038	45,576
Weekend	37,926	37,678	37,616	36,768	31,400