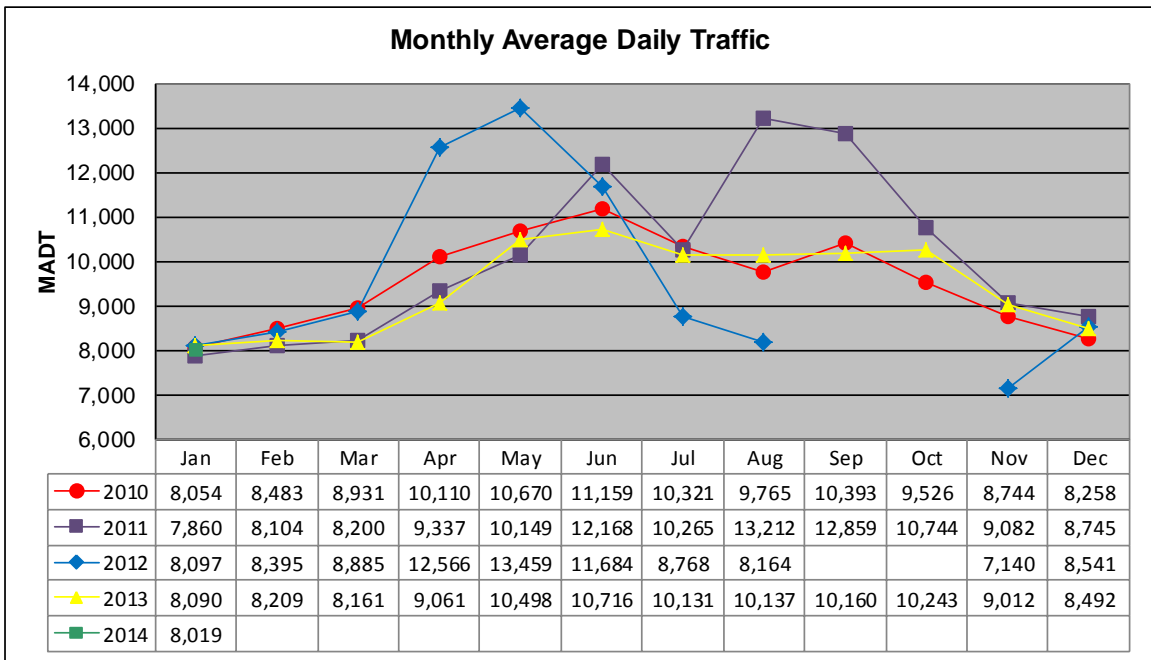


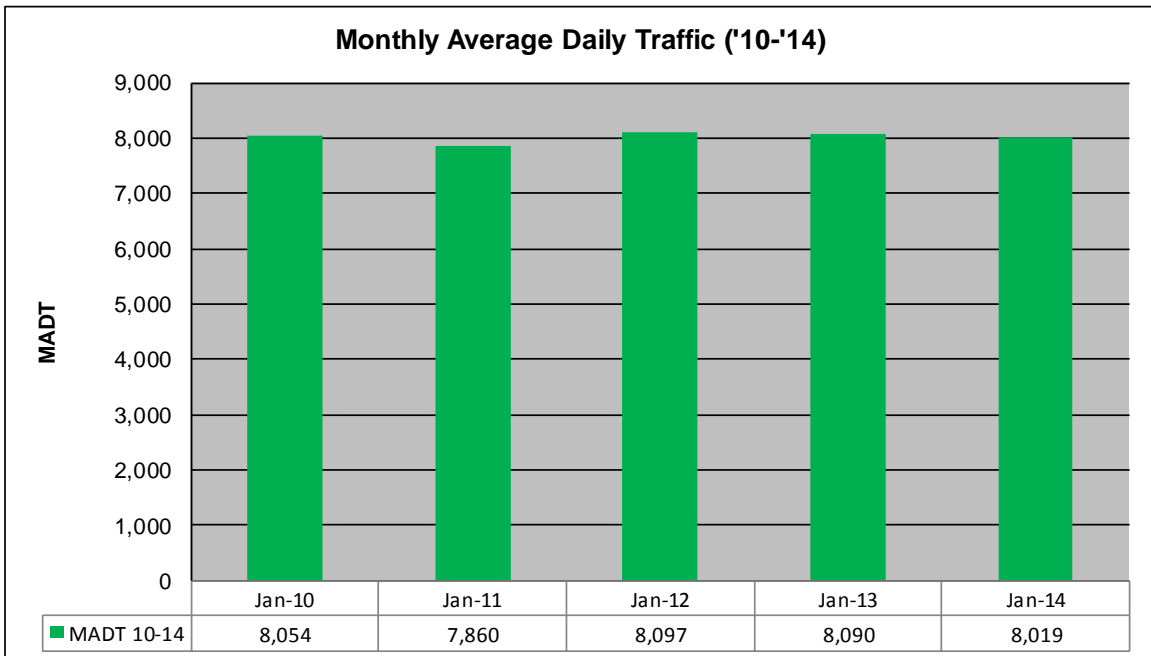
# MONTHLY REPORT, STATION NO. 390 (ATR)

## JANUARY 2014

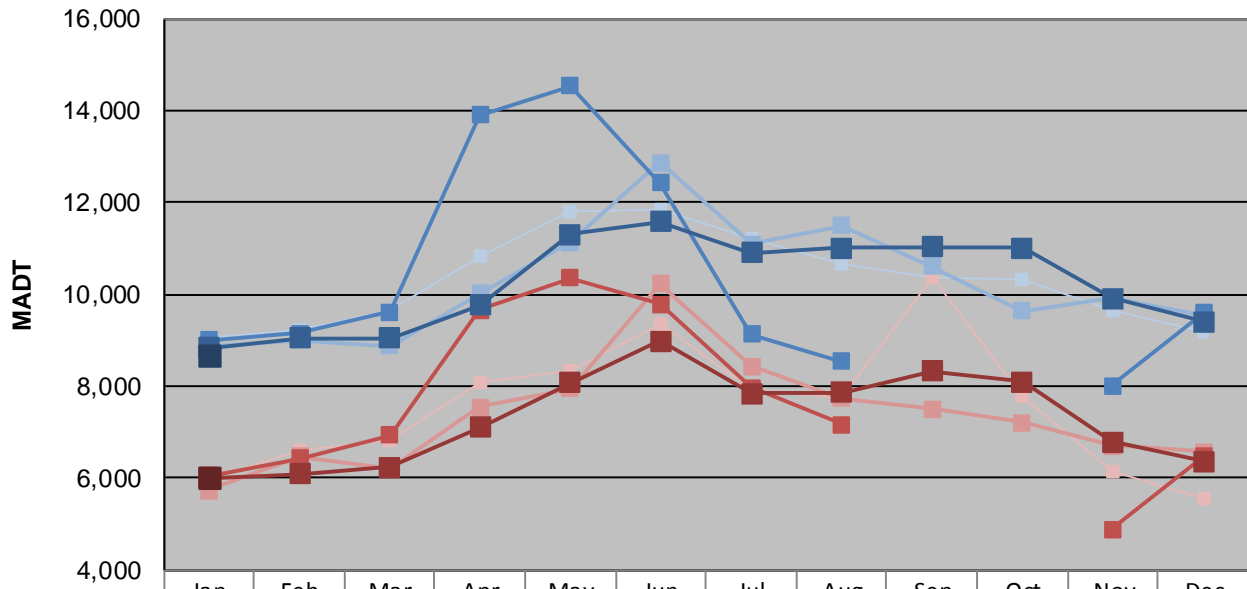
Station Measurement: VOLUME/SPEED/CLASS		
Route: TH 61	Route Direction: N/S	Lanes: 2
County: Washington		Closest City: Hugo
Functional Class: Urban Minor Arterial		
Location: .9 MI N OF CSAH8 IN HUGO		
Ref Post: 153+00.300	True Mile: 153.097	Sequence No. 9878
<b>Volume: 248,594</b>		<b>MADT: 8,019</b>
<b>Weekday (M-F) MADT: 8,660</b>		<b>Weekend (Sa-Su) MADT: 6,032</b>



Note: Increase in traffic Jun/Aug/Sep '11 and Apr/May '12 due to detour from I-35E... Decrease in traffic Aug/Sep '10 and Jul/Aug/Nov '12 due to construction on TH 61... No data Sep/Oct '12 due to sensors destroyed by construction



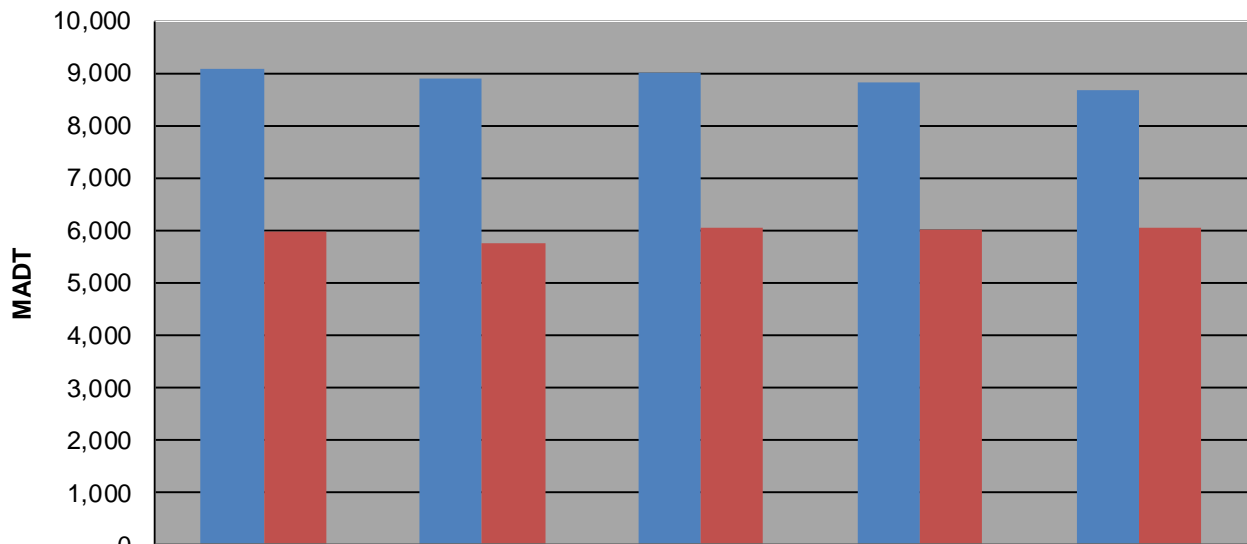
### Weekday (WD)/Weekend (WE) Monthly Average Daily Traffic



	Jan	Feb	Mar	Apr	May	Jun	Jul	Aug	Sep	Oct	Nov	Dec
'10 WD	9,072	9,230	9,670	10,814	11,796	11,838	11,204	10,648	10,384	10,306	9,670	9,184
'10 WE	5,974	6,616	6,840	8,100	8,338	9,348	7,936	7,752	10,374	7,794	6,150	5,544
'11 WD	8,884	9,004	8,882	10,020	11,134	12,866	11,088	11,486	10,620	9,640	9,910	9,550
'11 WE	5,732	6,470	6,222	7,558	7,956	10,226	8,432	7,748	7,508	7,218	6,700	6,572
'12 WD	9,008	9,152	9,620	13,896	14,530	12,422	9,134	8,548			8,008	9,590
'12 WE	6,060	6,436	6,930	9,662	10,360	9,776	7,962	7,172			4,882	6,466
'13 WD	8,826	9,056	9,042	9,770	11,304	11,582	10,898	11,008	11,030	11,004	9,914	9,414
'13 WE	6,016	6,090	6,250	7,100	8,068	8,982	7,854	7,862	8,336	8,092	6,794	6,364
'14 WD	8,660											
'14 WE	6,032											

Note: 'Weekday' defined as Monday-Friday, 'Weekend' defined as Saturday-Sunday

### Weekday/Weekend Monthly Average Daily Traffic ('10-'14)



	Jan-10	Jan-11	Jan-12	Jan-13	Jan-14
Weekday	9,072	8,884	9,008	8,826	8,660
Weekend	5,974	5,732	6,060	6,016	6,032