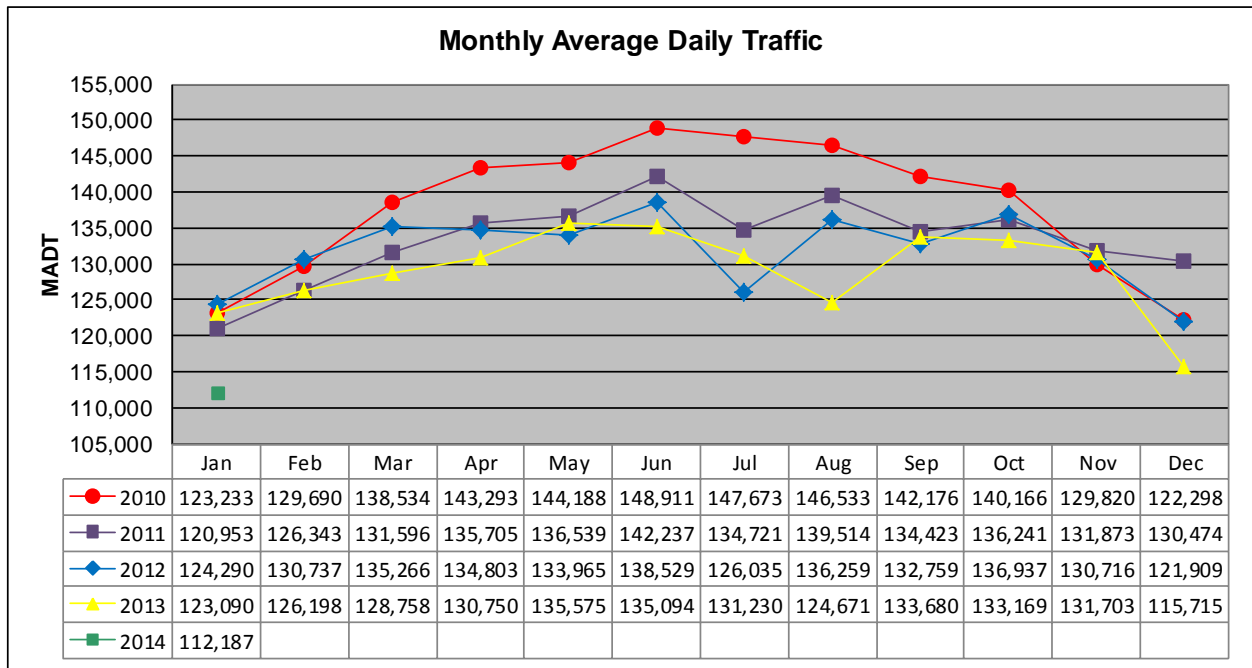


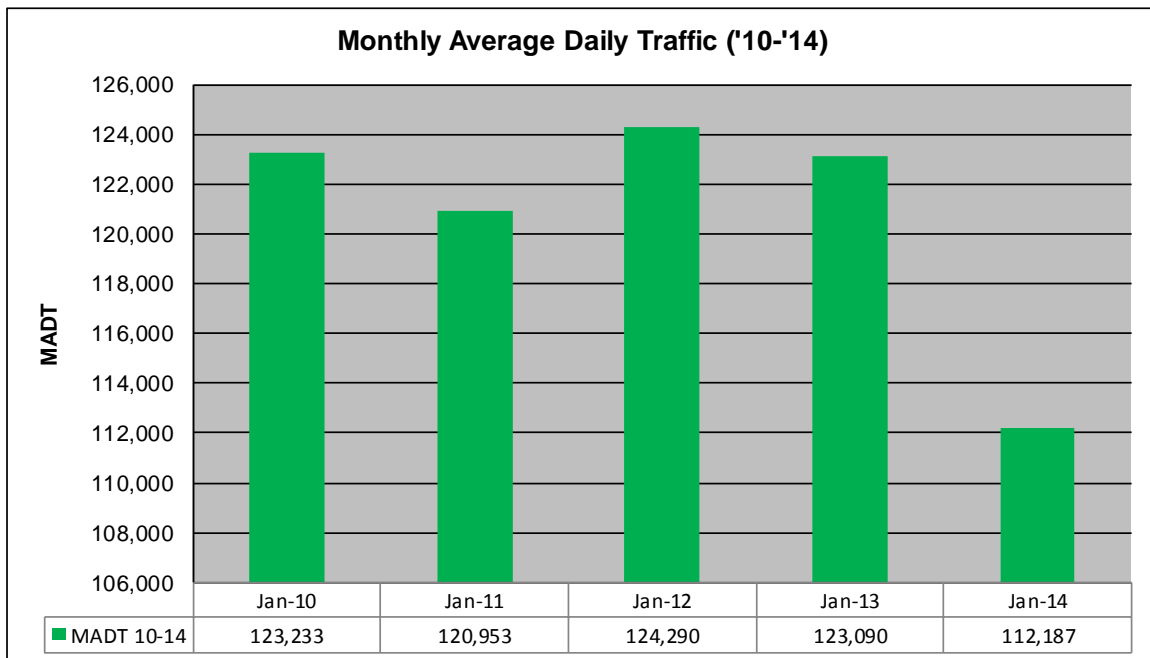
MONTHLY REPORT, STATION NO. 303 (ATR)

JANUARY 2014

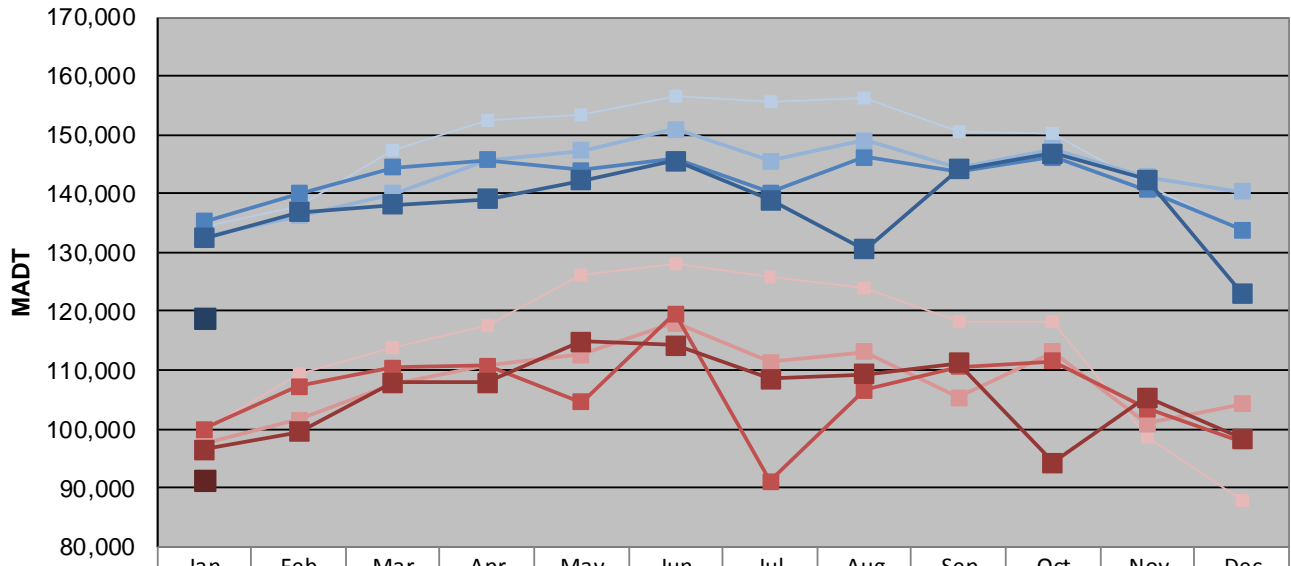
| | | |
|---|----------------------|-------------------------------------|
| Station Measurement: VOLUME | | |
| Route: I-35E | Route Direction: N/S | Lanes: 6 |
| County: Ramsey | | Closest City: St Paul |
| Functional Class: Urban Principal Arterial - Interstate | | |
| Location: S OF MSAS109 (E ARLINGTON AVE) IN ST PAUL | | |
| Ref Post: 109+00.835 | True Mile: 109.893 | Sequence No. 9836 |
| Volume: 3,477,795 | | MADT: 112,187 |
| Weekday (M-F) MADT: 118,890 | | Weekend (Sa-Su) MADT: 91,462 |



Note: Decrease in traffic July 2012 and August 2013 due to construction on I-35E



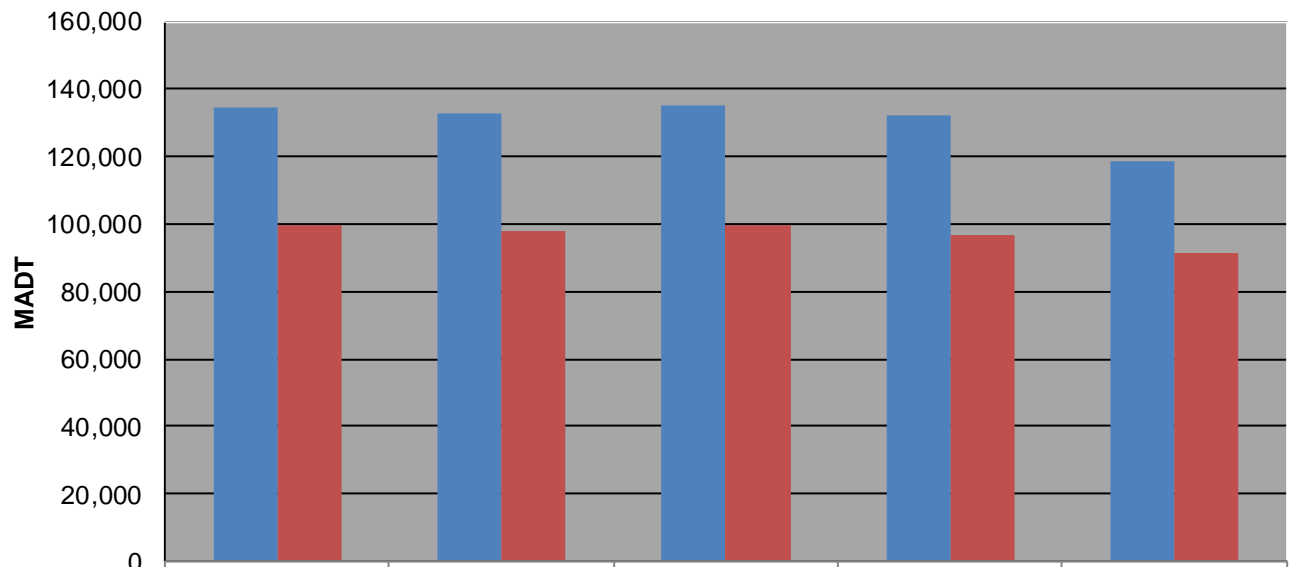
Weekday (WD)/Weekend (WE) Monthly Average Daily Traffic



| | Jan | Feb | Mar | Apr | May | Jun | Jul | Aug | Sep | Oct | Nov | Dec |
|--------|---------|---------|---------|---------|---------|---------|---------|---------|---------|---------|---------|---------|
| '10 WD | 134,406 | 137,836 | 147,454 | 152,314 | 153,384 | 156,518 | 155,706 | 156,284 | 150,554 | 150,100 | 141,288 | 133,810 |
| '10 WE | 99,982 | 109,324 | 113,960 | 117,588 | 126,018 | 128,078 | 125,904 | 123,924 | 118,322 | 118,400 | 98,586 | 87,980 |
| '11 WD | 132,586 | 136,270 | 140,092 | 145,776 | 147,338 | 150,904 | 145,518 | 148,998 | 144,306 | 147,592 | 142,806 | 140,374 |
| '11 WE | 97,638 | 101,502 | 107,680 | 110,742 | 112,630 | 118,000 | 111,382 | 113,168 | 105,360 | 113,044 | 100,982 | 104,194 |
| '12 WD | 135,318 | 139,948 | 144,506 | 145,768 | 143,978 | 145,906 | 140,202 | 146,268 | 143,884 | 146,156 | 140,582 | 133,864 |
| '12 WE | 99,982 | 107,190 | 110,406 | 110,720 | 104,494 | 119,572 | 91,114 | 106,594 | 110,512 | 111,504 | 103,494 | 97,834 |
| '13 WD | 132,498 | 136,886 | 138,196 | 139,018 | 142,236 | 145,560 | 138,878 | 130,570 | 144,116 | 146,820 | 142,392 | 123,084 |
| '13 WE | 96,464 | 99,480 | 107,902 | 107,950 | 114,782 | 114,162 | 108,540 | 109,280 | 111,160 | 94,312 | 105,278 | 98,366 |
| '14 WD | 118,890 | | | | | | | | | | | |
| '14 WE | 91,462 | | | | | | | | | | | |

Note: 'Weekday' defined as Monday-Friday, 'Weekend' defined as Saturday-Sunday

Weekday/Weekend Monthly Average Daily Traffic ('10-'14)



| | Jan-10 | Jan-11 | Jan-12 | Jan-13 | Jan-14 |
|---------|---------|---------|---------|---------|---------|
| Weekday | 134,406 | 132,586 | 135,318 | 132,498 | 118,890 |
| Weekend | 99,982 | 97,638 | 99,982 | 96,464 | 91,462 |