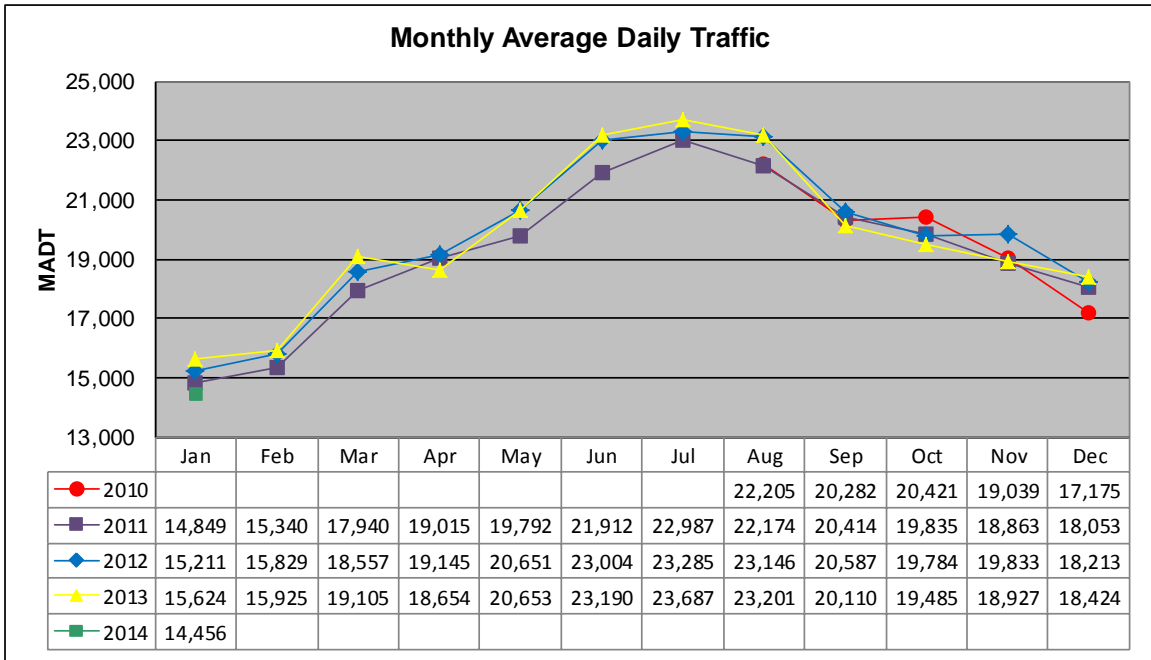


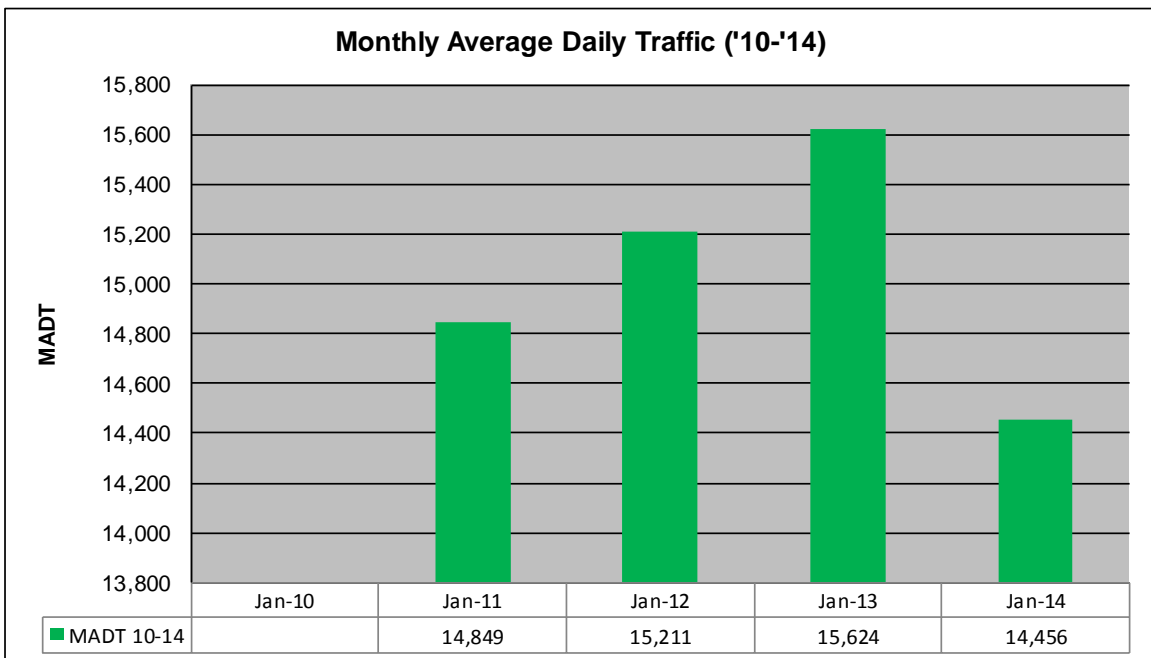
# MONTHLY REPORT, STATION NO. 26 (WIM)

## JANUARY 2014

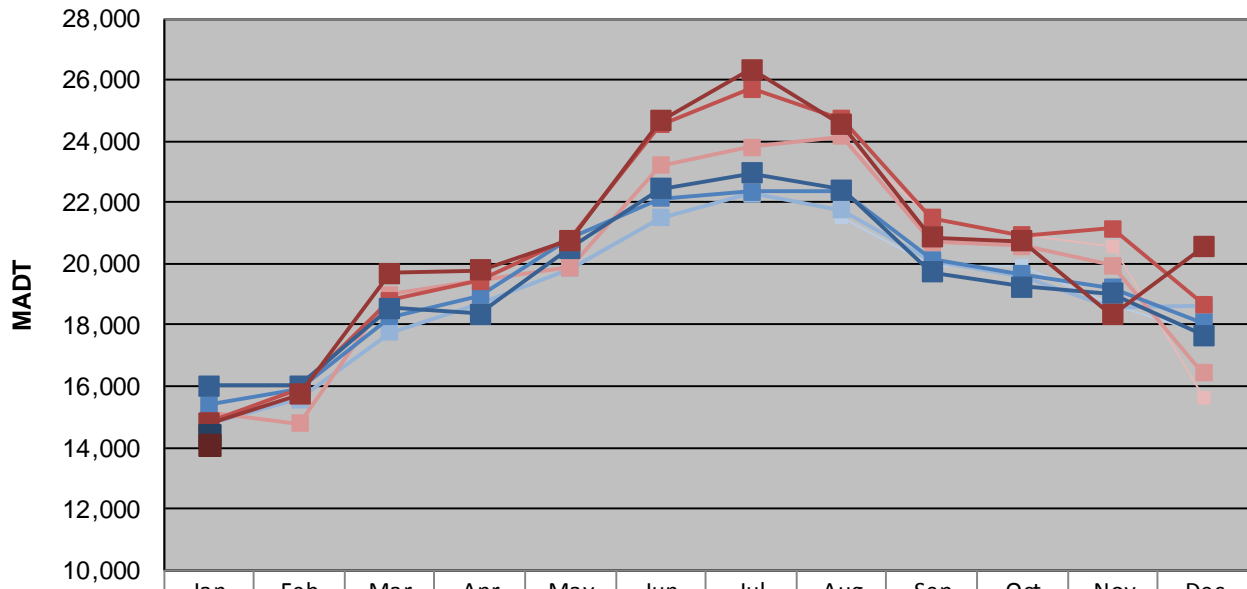
Station Measurement: VOLUME/SPEED/CLASS/WEIGHT		
Route: I-35	Route Direction: N/S	Lanes: 4
County: Steele	Closest City: Ellendale	
Functional Class: Rural Principal Arterial - Interstate		
Location: 3.5 MI N OF TH30, N OF ELLENDALE		
Ref Post: 030+00.100	True Mile: 30.103	Sequence No. 5707
<b>Volume: 448,146</b>		<b>MADT: 14,456</b>
<b>Weekday (M-F) MADT: 14,448</b>		<b>Weekend (Sa-Su) MADT: 14,074</b>



Note: No data until August 2010; sensors destroyed by construction in May 2009



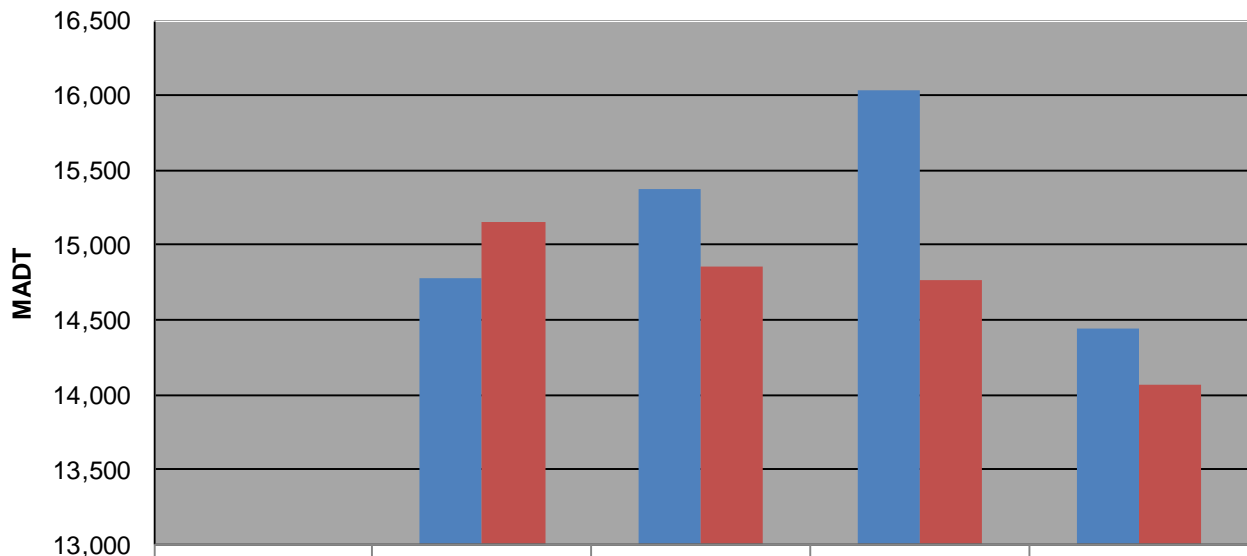
### Weekday (WD)/Weekend (WE) Monthly Average Daily Traffic



	Jan	Feb	Mar	Apr	May	Jun	Jul	Aug	Sep	Oct	Nov	Dec
'10 WD								21,494	19,914	19,918	18,658	17,692
'10 WE								24,154	21,478	20,926	20,564	15,598
'11 WD	14,784	15,568	17,746	18,698	19,852	21,500	22,302	21,742	20,060	19,570	18,538	18,624
'11 WE	15,158	14,772	18,986	19,460	19,898	23,210	23,810	24,150	20,694	20,576	19,936	16,418
'12 WD	15,374	15,880	18,258	18,960	20,840	22,122	22,366	22,386	20,138	19,666	19,232	18,090
'12 WE	14,854	15,898	18,820	19,430	20,836	24,530	25,698	24,716	21,486	20,934	21,164	18,670
'13 WD	16,032	16,006	18,544	18,352	20,506	22,456	22,958	22,426	19,714	19,238	19,038	17,658
'13 WE	14,772	15,724	19,688	19,776	20,766	24,662	26,332	24,532	20,866	20,728	18,334	20,560
'14 WD	14,448											
'14 WE	14,074											

Note: 'Weekday' defined as Monday-Friday, 'Weekend' defined as Saturday-Sunday

### Weekday/Weekend Monthly Average Daily Traffic ('10-'14)



	Jan-10	Jan-11	Jan-12	Jan-13	Jan-14
Weekday		14,784	15,374	16,032	14,448
Weekend		15,158	14,854	14,772	14,074