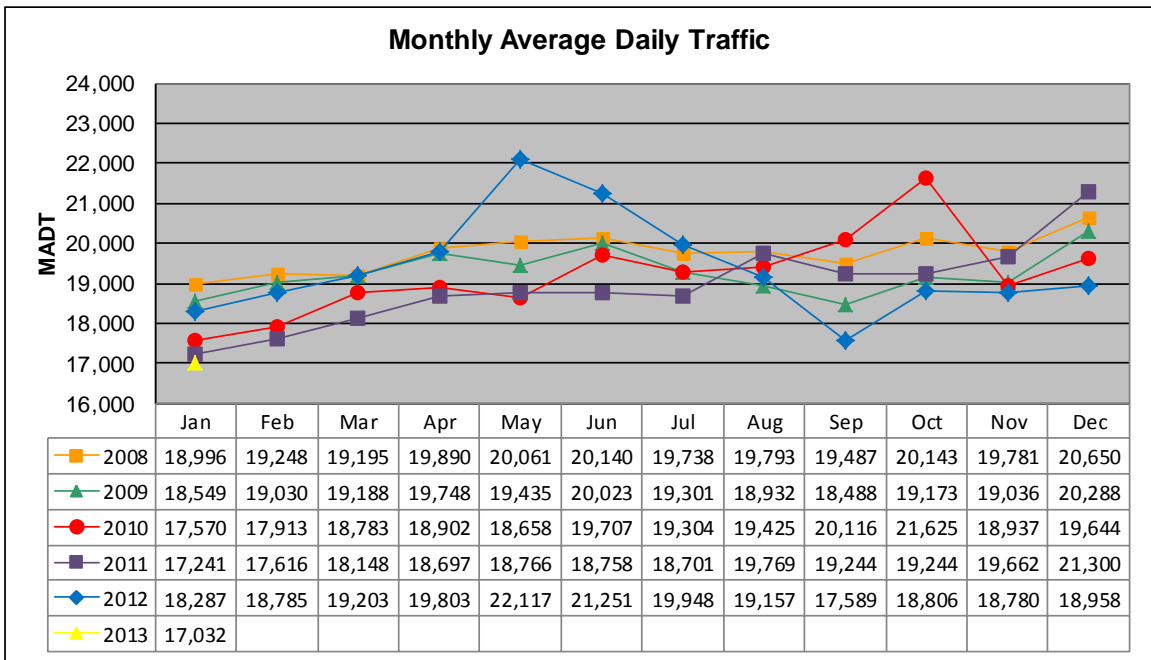


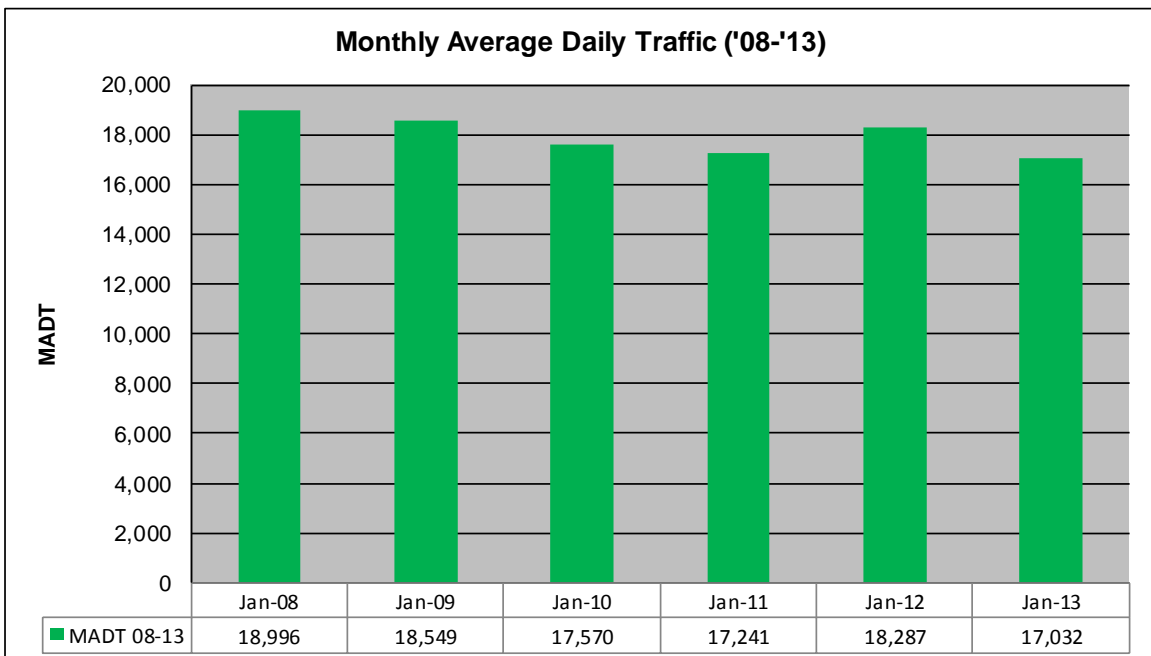
MONTHLY REPORT, STATION NO. 402 (ATR)

JANUARY 2013

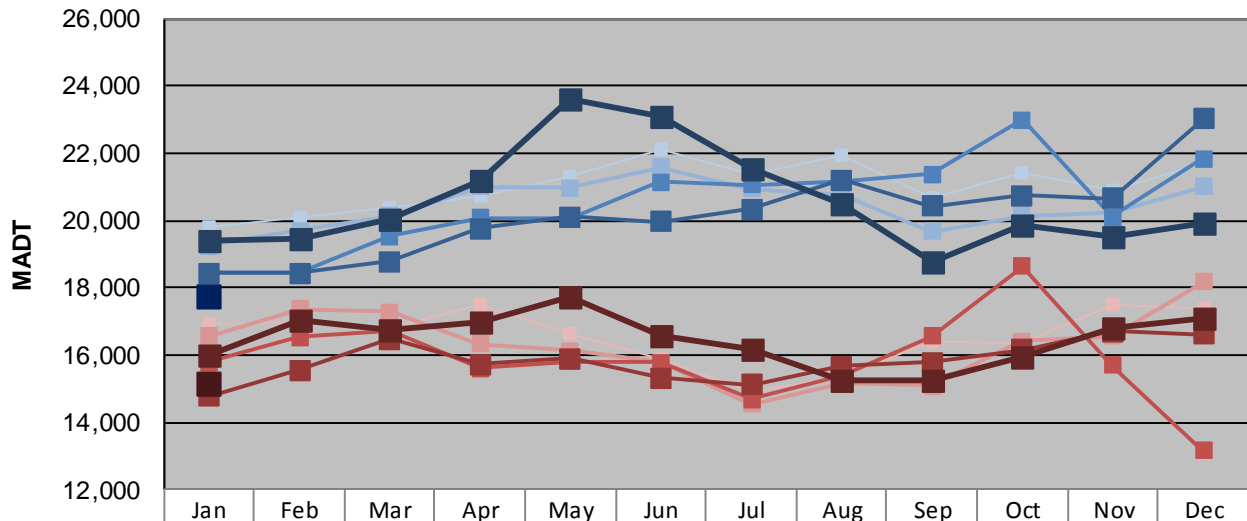
| | | |
|---|----------------------|-------------------------------------|
| Station Measurement: VOLUME | | |
| Route: CSAH 31 | Route Direction: N/S | Lanes: 4 |
| County: Hennepin | | Closest City: Edina |
| Functional Class: Urban Minor Arterial | | |
| Location: S OF MSAS145 (W 70TH ST) IN EDINA | | |
| Ref Post: 001+00.100 | True Mile: 1.1 | Sequence No. 9881 |
| Volume: 527,998 | | MADT: 17,032 |
| Weekday (M-F) MADT: 17,740 | | Weekend (Sa-Su) MADT: 15,146 |



Note: Increase in traffic September/October 2010 and May/June 2012 and decrease in traffic September 2012 due to construction on I-35W



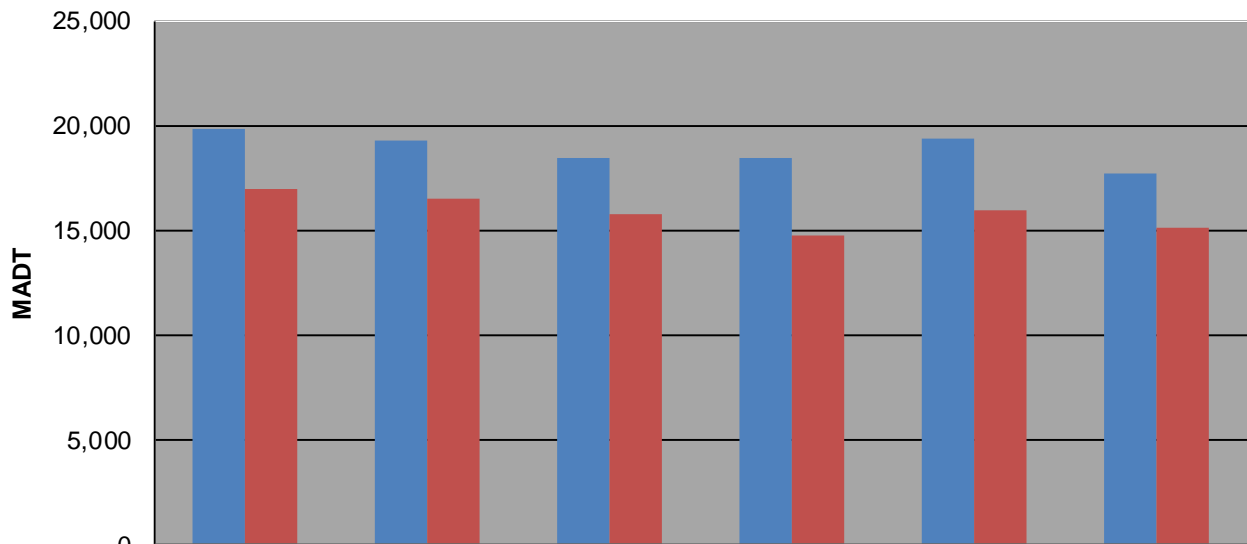
Weekday (WD)/Weekend (WE) Monthly Average Daily Traffic



| | Jan | Feb | Mar | Apr | May | Jun | Jul | Aug | Sep | Oct | Nov | Dec |
|--------|--------|--------|--------|--------|--------|--------|--------|--------|--------|--------|--------|--------|
| '08 WD | 19,802 | 20,064 | 20,376 | 20,752 | 21,298 | 22,082 | 21,334 | 21,922 | 20,676 | 21,444 | 20,926 | 21,734 |
| '08 WE | 16,940 | 16,970 | 16,824 | 17,504 | 16,644 | 15,866 | 14,908 | 15,334 | 16,372 | 16,356 | 17,490 | 17,368 |
| '09 WD | 19,234 | 19,702 | 20,122 | 21,000 | 20,964 | 21,584 | 20,944 | 20,738 | 19,682 | 20,134 | 20,224 | 21,012 |
| '09 WE | 16,544 | 17,352 | 17,288 | 16,340 | 16,116 | 15,788 | 14,534 | 15,168 | 15,100 | 16,404 | 16,548 | 18,160 |
| '10 WD | 18,442 | 18,464 | 19,532 | 20,066 | 20,088 | 21,130 | 21,046 | 21,170 | 21,380 | 23,002 | 20,092 | 21,824 |
| '10 WE | 15,772 | 16,538 | 16,732 | 15,602 | 15,816 | 15,772 | 14,688 | 15,406 | 16,552 | 18,628 | 15,692 | 13,168 |
| '11 WD | 18,432 | 18,434 | 18,774 | 19,758 | 20,100 | 19,950 | 20,346 | 21,200 | 20,420 | 20,752 | 20,664 | 23,008 |
| '11 WE | 14,780 | 15,544 | 16,478 | 15,710 | 15,894 | 15,312 | 15,124 | 15,664 | 15,788 | 16,140 | 16,708 | 16,618 |
| '12 WD | 19,398 | 19,478 | 20,056 | 21,192 | 23,590 | 23,118 | 21,532 | 20,482 | 18,774 | 19,844 | 19,542 | 19,894 |
| '12 WE | 15,980 | 17,044 | 16,754 | 16,958 | 17,704 | 16,558 | 16,150 | 15,274 | 15,220 | 15,950 | 16,792 | 17,080 |
| '13 WD | 17,740 | | | | | | | | | | | |
| '13 WE | 15,146 | | | | | | | | | | | |

Note: 'Weekday' defined as Monday-Friday, 'Weekend' defined as Saturday-Sunday

Weekday/Weekend Monthly Average Daily Traffic ('08-'13)



| | Jan-08 | Jan-09 | Jan-10 | Jan-11 | Jan-12 | Jan-13 |
|---------|--------|--------|--------|--------|--------|--------|
| Weekday | 19,802 | 19,234 | 18,442 | 18,432 | 19,398 | 17,740 |
| Weekend | 16,940 | 16,544 | 15,772 | 14,780 | 15,980 | 15,146 |