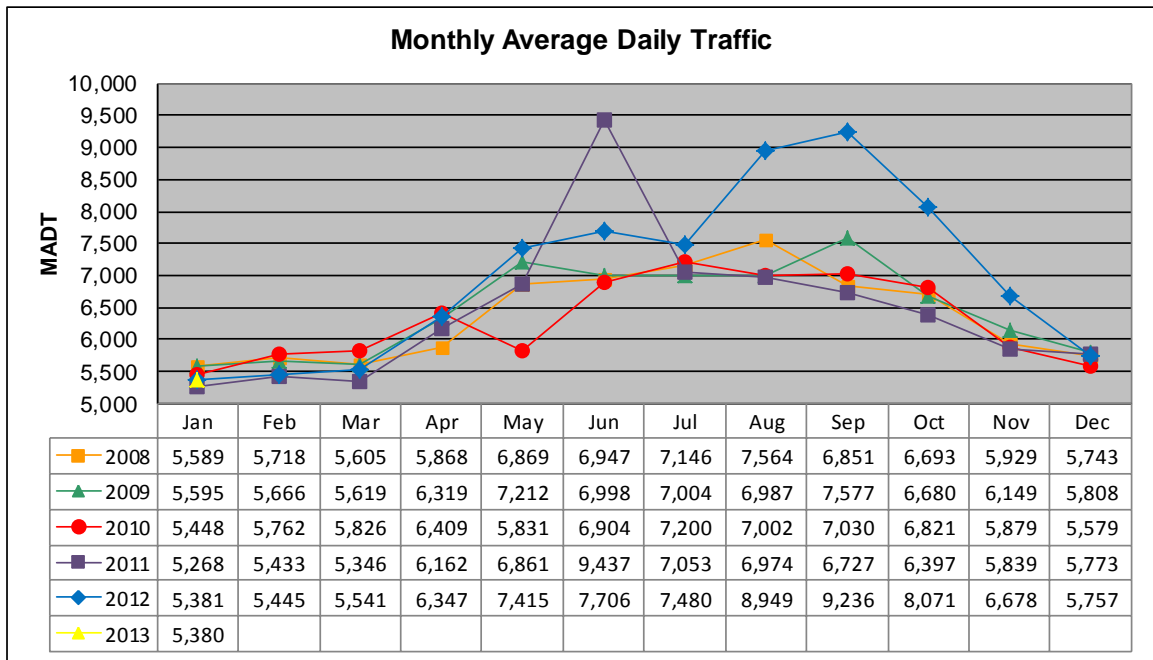


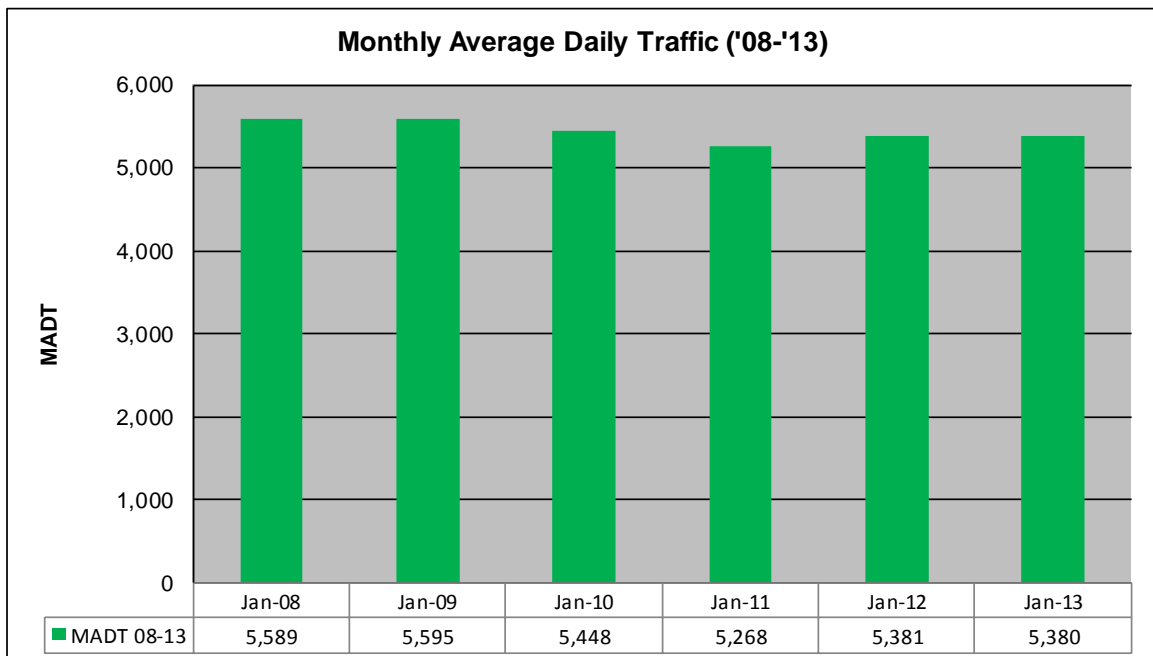
# MONTHLY REPORT, STATION NO. 386 (ATR)

## JANUARY 2013

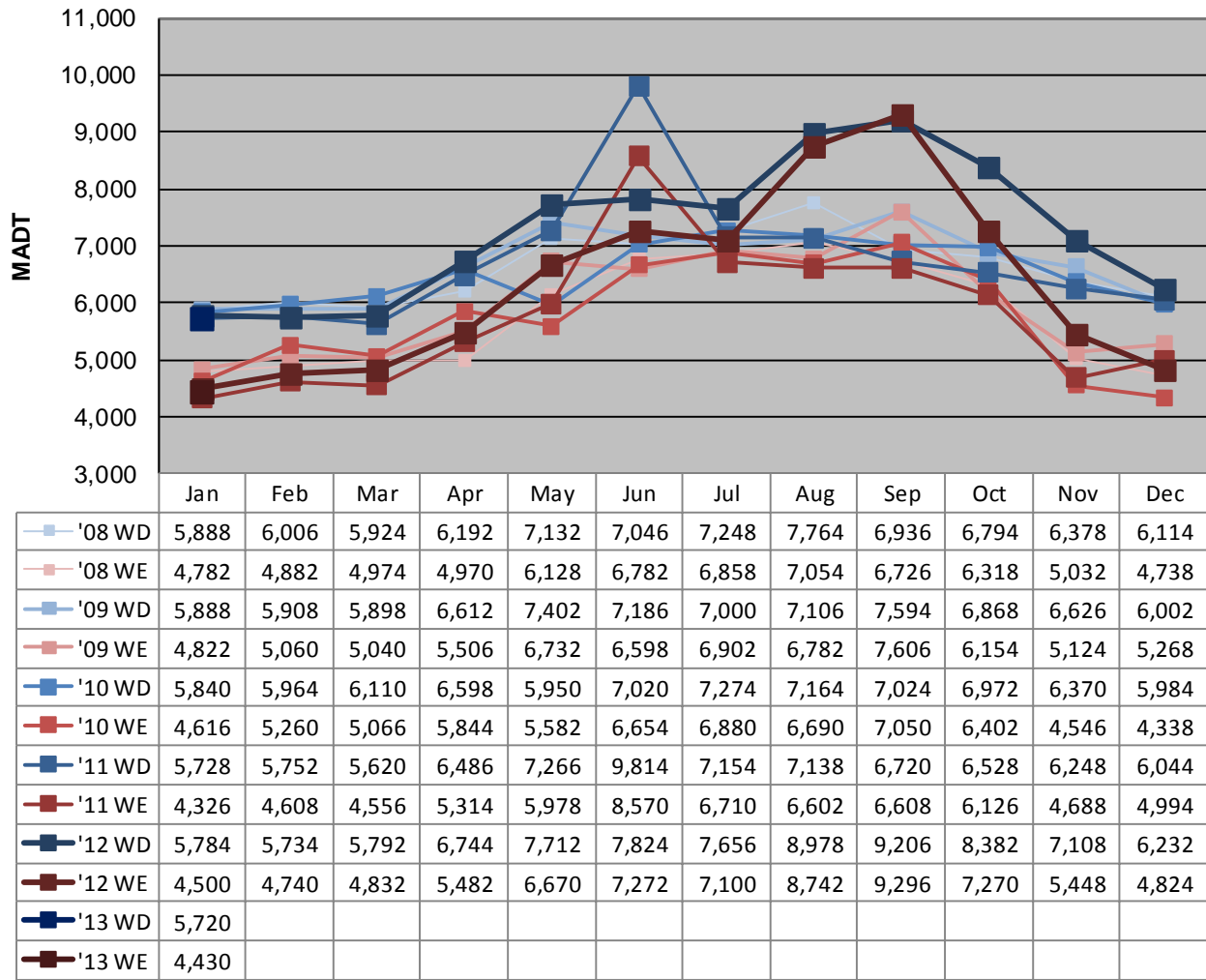
<b>Station Measurement: VOLUME</b>		
Route: TH 97	Route Direction: N/S	Lanes: 2
County: Washington		Closest City: Scandia
Functional Class: Rural Minor Arterial		
Location: E OF CSAH1 (LOFTON AVE N) IN SCANDIA		
Ref Post: 008+00.844	True Mile: 8.807	Sequence No. 9875
<b>Volume: 166,794</b>		<b>MADT: 5,380</b>
<b>Weekday (M-F) MADT: 5,720</b>		<b>Weekend (Sa-Su) MADT: 4,430</b>



Note: Decrease in traffic May 2010 due to construction on I-35... Increase in traffic June 2011 due to detours from TH 8 and I-35 and August to October 2012 due to detour from TH 8



**Weekday (WD)/Weekend (WE) Monthly Average Daily Traffic**



Note: 'Weekday' defined as Monday-Friday, 'Weekend' defined as Saturday-Sunday

**Weekday/Weekend Monthly Average Daily Traffic ('08-'13)**

