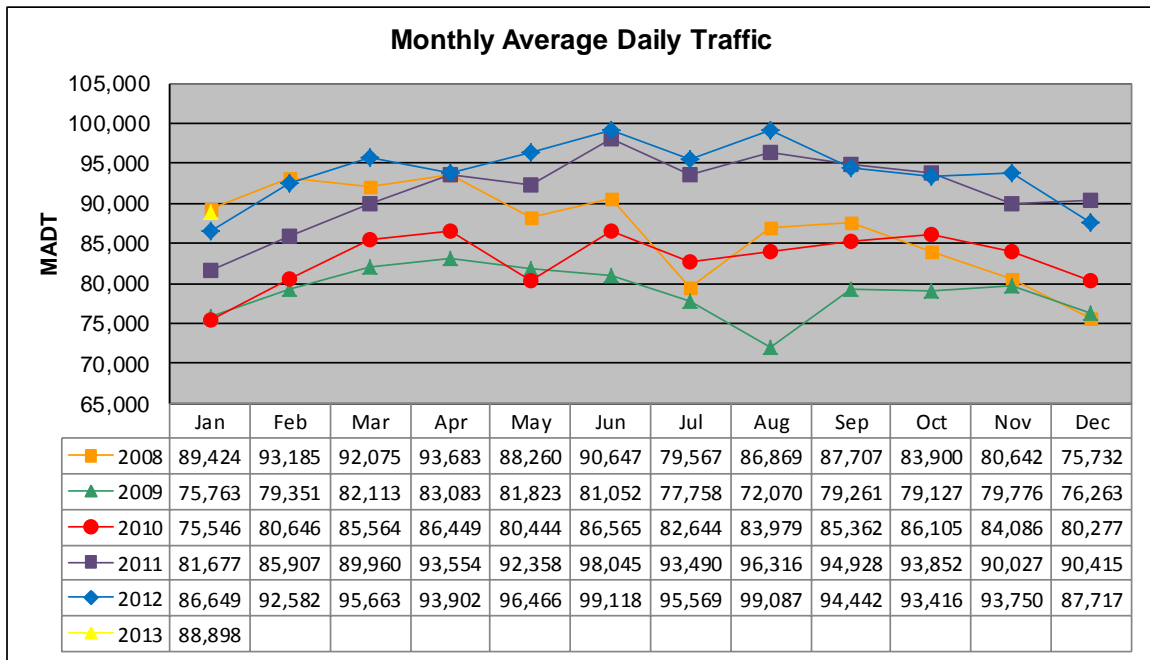


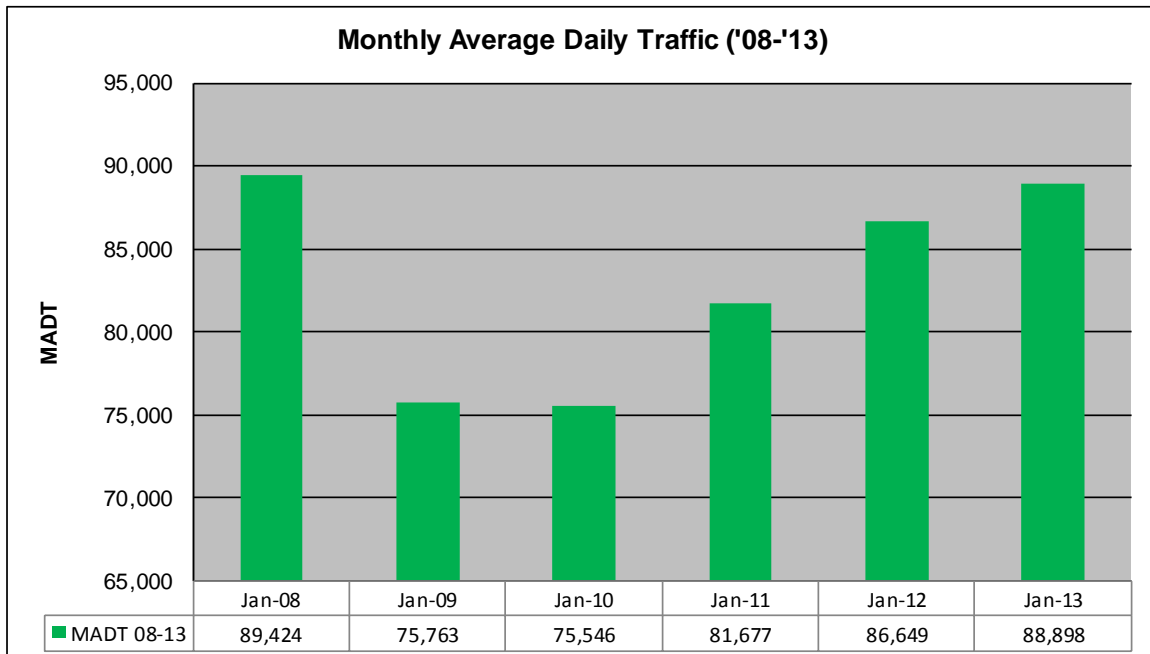
# MONTHLY REPORT, STATION NO. 309 (ATR)

## JANUARY 2013

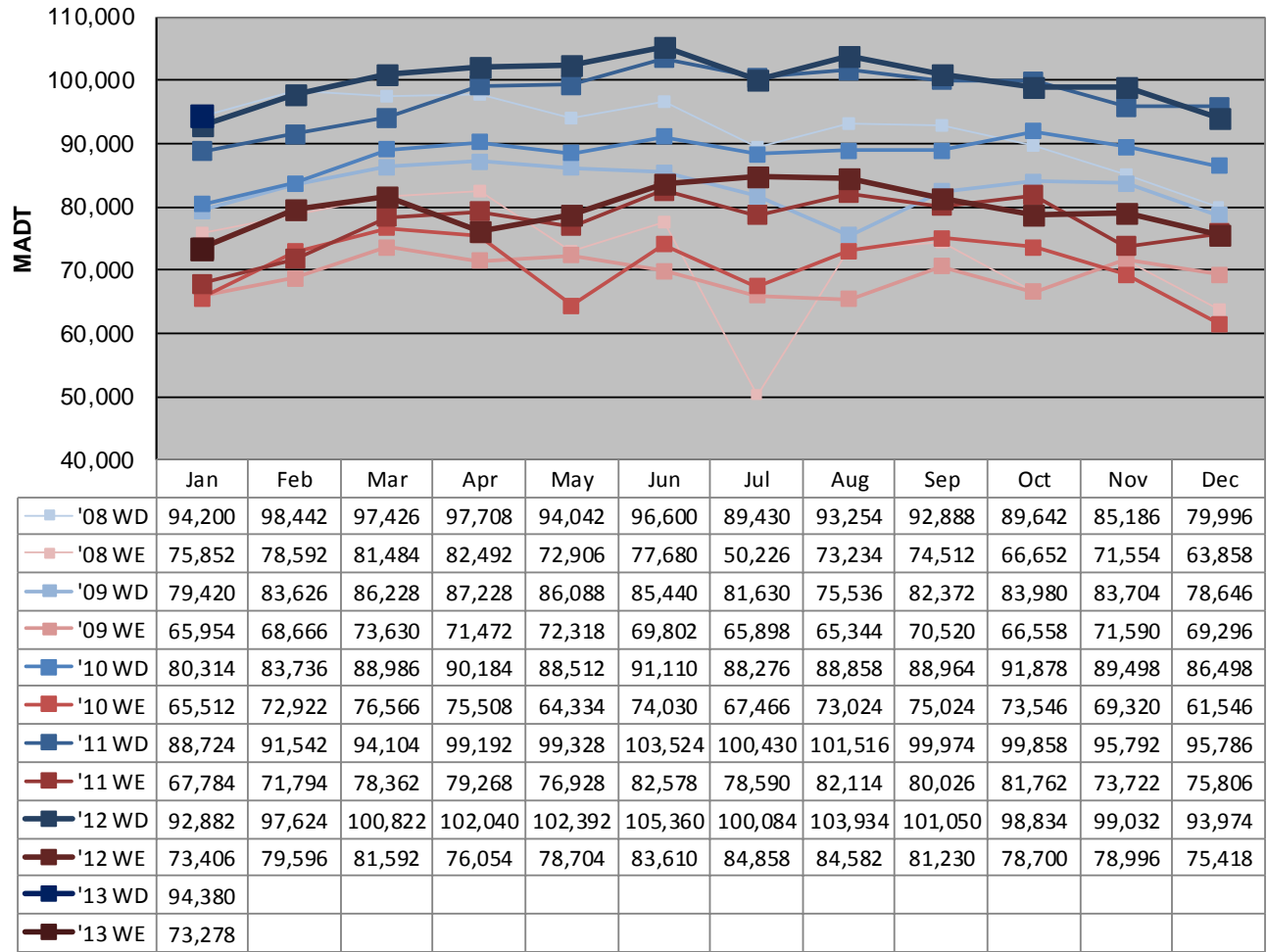
Station Measurement: VOLUME		
Route: TH 65	Route Direction: N/S	Lanes: 6
County: Hennepin		Closest City: Minneapolis
Functional Class: Urban Minor Arterial		
Location: S OF CSAH 5 (E FRANKLIN AVE) IN MINNEAPOLIS		
Ref Post: 000+00.480	True Mile: 0.48	Sequence No. 9838
<b>Volume: 2,755,841</b>		<b>MADT: 88,898</b>
<b>Weekday (M-F) MADT: 94,380</b>		<b>Weekend (Sa-Su) MADT: 73,278</b>



Note: Decrease in traffic 2008-2009 due to I-35W bridge collapse and construction on TH 62... Although traffic increased from 2009 to 2010, volumes were lower than expected due to construction on I-35W and TH 62



**Weekday (WD)/Weekend (WE) Monthly Average Daily Traffic**



Note: 'Weekday' defined as Monday-Friday, 'Weekend' defined as Saturday-Sunday

**Weekday/Weekend Monthly Average Daily Traffic ('08-'13)**

