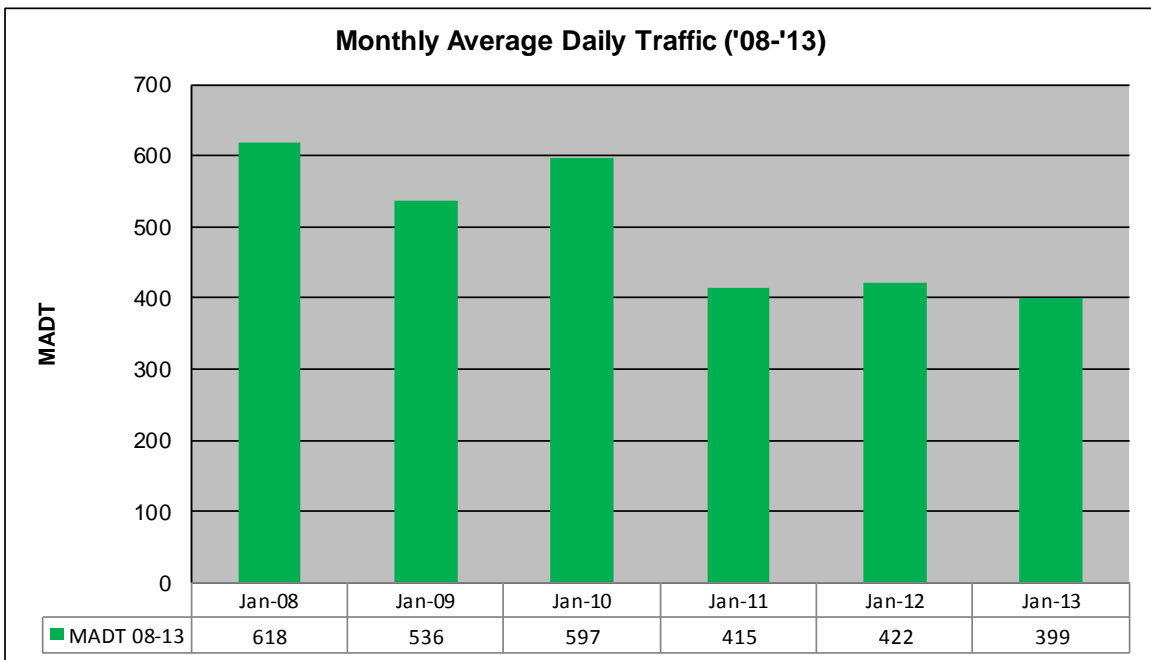
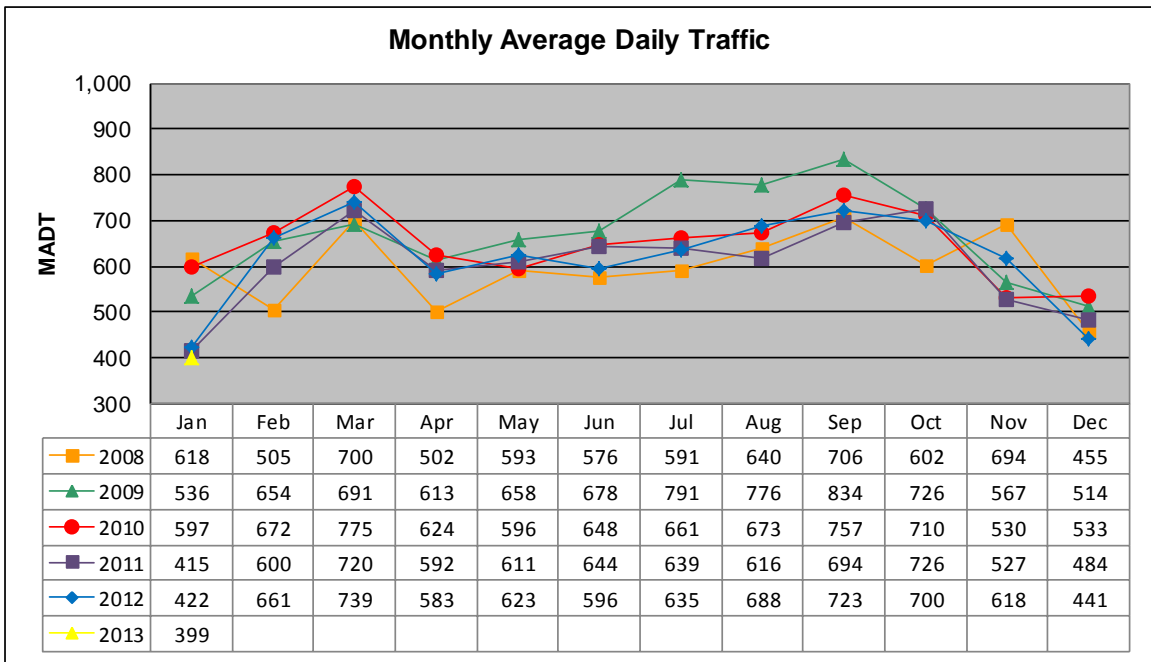


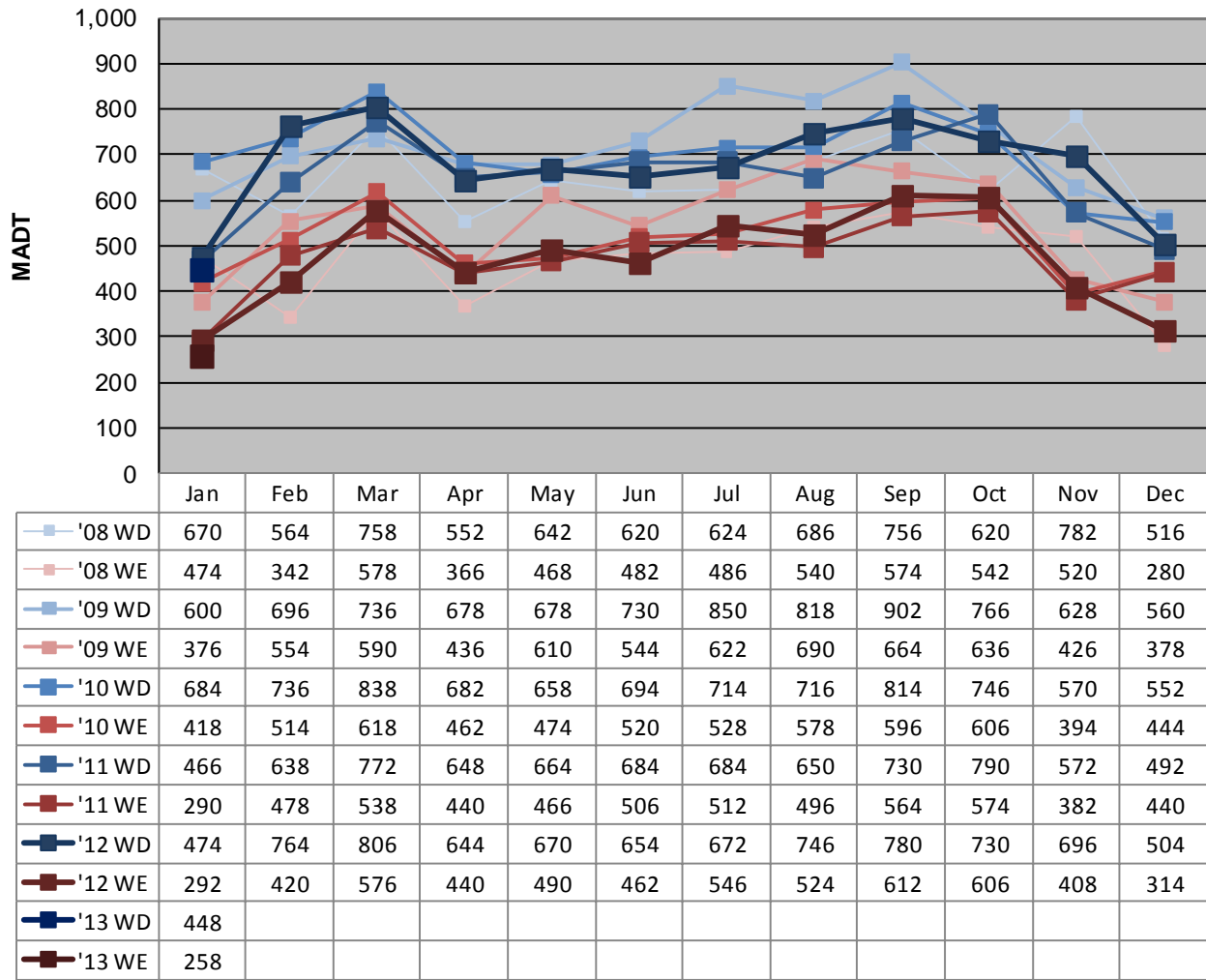
# MONTHLY REPORT, STATION NO. 209 (ATR)

## JANUARY 2013

Station Measurement: VOLUME/SPEED/CLASS		
Route: TH 75	Route Direction: N/S	Lanes: 2
County: Polk	Closest City: Warren	
Functional Class: Rural Minor Arterial		
Location: 1.7 MI N OF CSAH23 (40TH AVE NW), SE OF WARREN		
Ref Post: 343+00.155	True Mile: 343.144	Sequence No. 6723
<b>Volume: 12,370</b>		<b>MADT: 399</b>
<b>Weekday (M-F) MADT: 448</b>		<b>Weekend (Sa-Su) MADT: 258</b>



### Weekday (WD)/Weekend (WE) Monthly Average Daily Traffic



Note: 'Weekday' defined as Monday-Friday, 'Weekend' defined as Saturday-Sunday

### Weekday/Weekend Monthly Average Daily Traffic ('08-'13)

