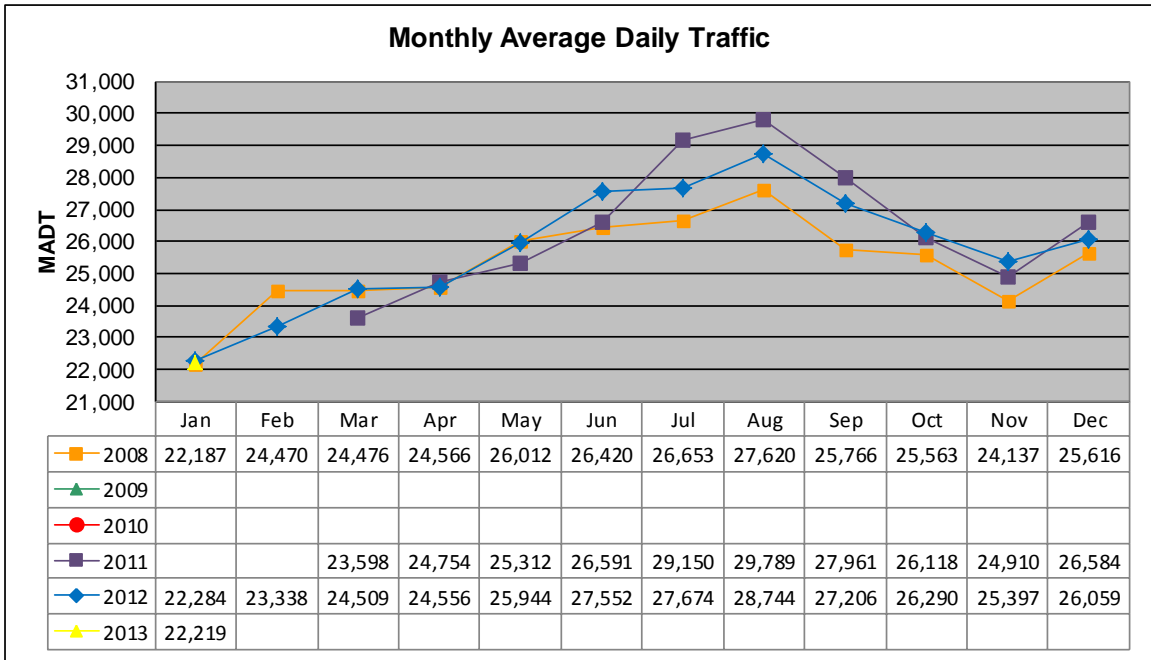


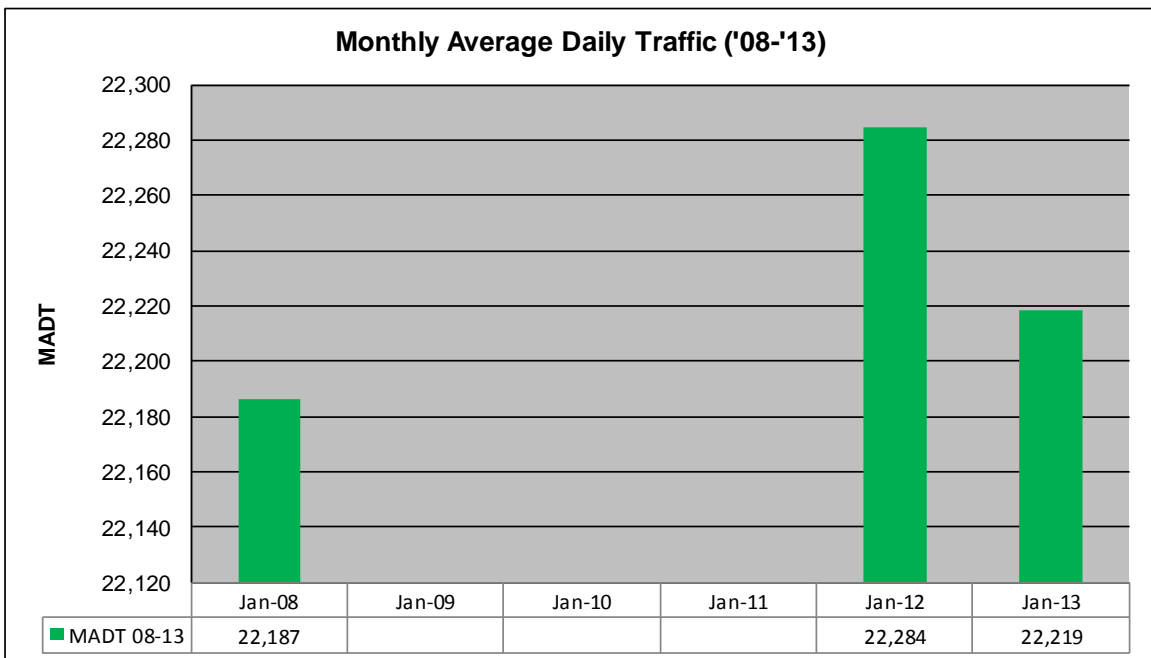
# MONTHLY REPORT, STATION NO. 110 (ATR)

## JANUARY 2013

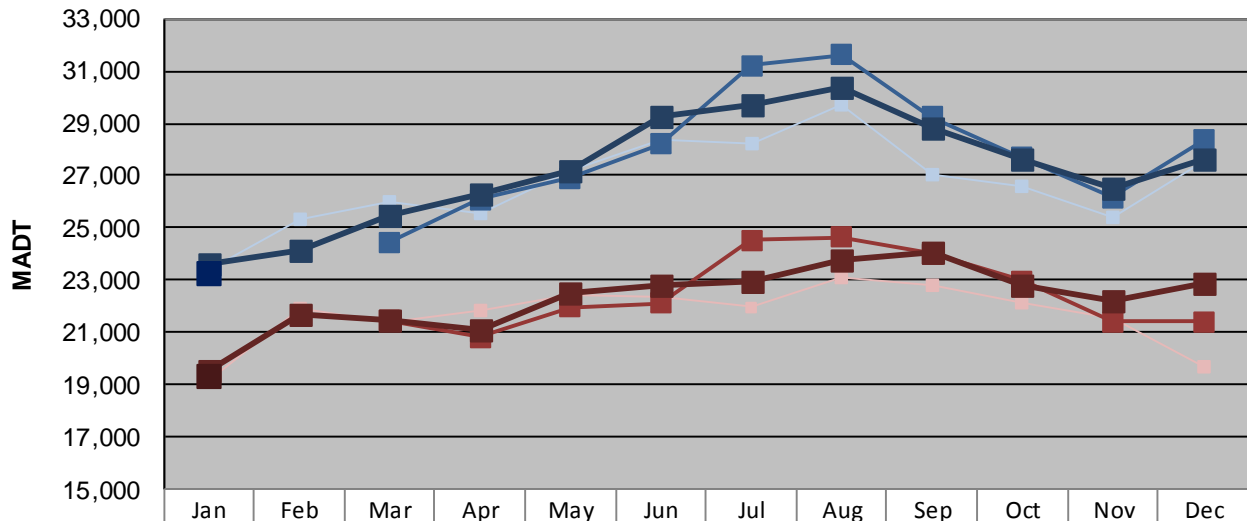
Station Measurement: VOLUME		
Route: TH 53	Route Direction: N/S	Lanes: 4
County: St Louis	Closest City: Duluth	
Functional Class: Urban Other Principal Arterial		
Location: SE OF CSAH6 (MAPLE GROVE RD) IN DULUTH		
Ref Post: 005+00.000	True Mile: 6.129	Sequence No. 9827
<b>Volume: 688,775</b>		<b>MADT: 22,219</b>
<b>Weekday (M-F) MADT: 23,276</b>		<b>Weekend (Sa-Su) MADT: 19,322</b>



Note: No data January 2009 to February 2011 due to sensors destroyed by construction



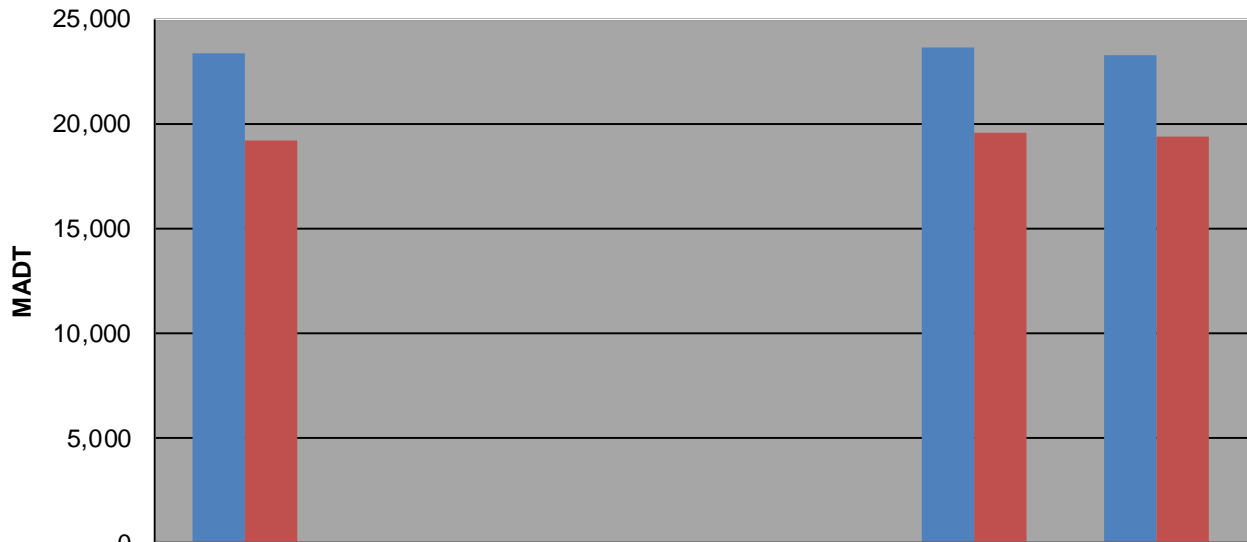
### Weekday (WD)/Weekend (WE) Monthly Average Daily Traffic



	Jan	Feb	Mar	Apr	May	Jun	Jul	Aug	Sep	Oct	Nov	Dec
'08 WD	23,372	25,298	26,014	25,540	27,192	28,360	28,236	29,678	27,016	26,626	25,430	27,556
'08 WE	19,146	21,936	21,380	21,834	22,418	22,382	21,972	23,116	22,774	22,176	21,550	19,710
'09 WD												
'09 WE												
'10 WD												
'10 WE												
'11 WD			24,442	26,078	26,914	28,220	31,214	31,618	29,224	27,690	26,170	28,352
'11 WE			21,462	20,822	21,980	22,136	24,544	24,660	24,016	22,956	21,422	21,420
'12 WD	23,632	24,120	25,494	26,276	27,158	29,258	29,718	30,394	28,780	27,664	26,524	27,662
'12 WE	19,536	21,706	21,474	21,136	22,510	22,798	22,988	23,756	24,058	22,784	22,184	22,884
'13 WD	23,276											
'13 WE	19,322											

Note: 'Weekday' defined as Monday-Friday, 'Weekend' defined as Saturday-Sunday

### Weekday/Weekend Monthly Average Daily Traffic ('08-'13)



	Jan-08	Jan-09	Jan-10	Jan-11	Jan-12	Jan-13
Weekday	23,372				23,632	23,276
Weekend	19,146				19,536	19,322