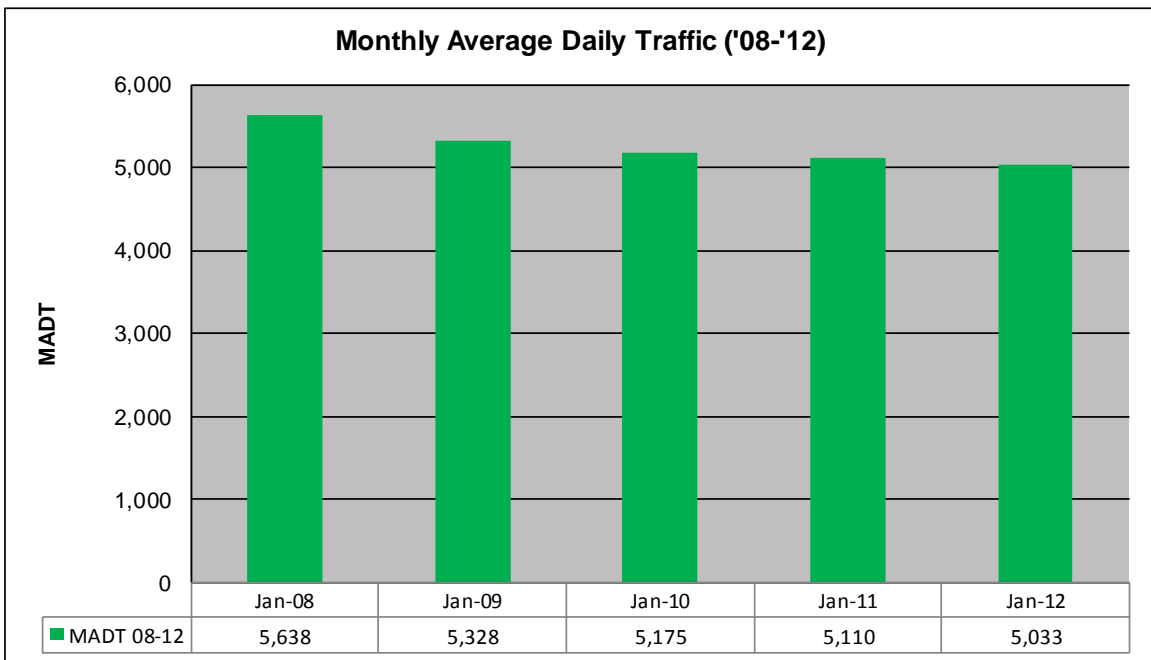
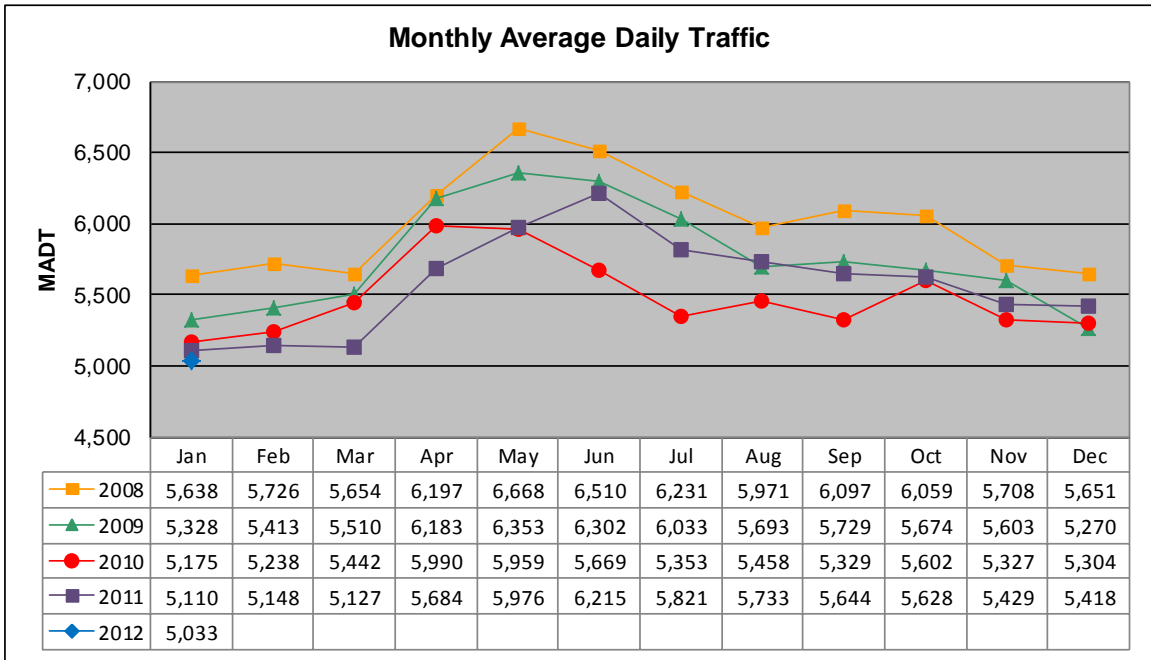


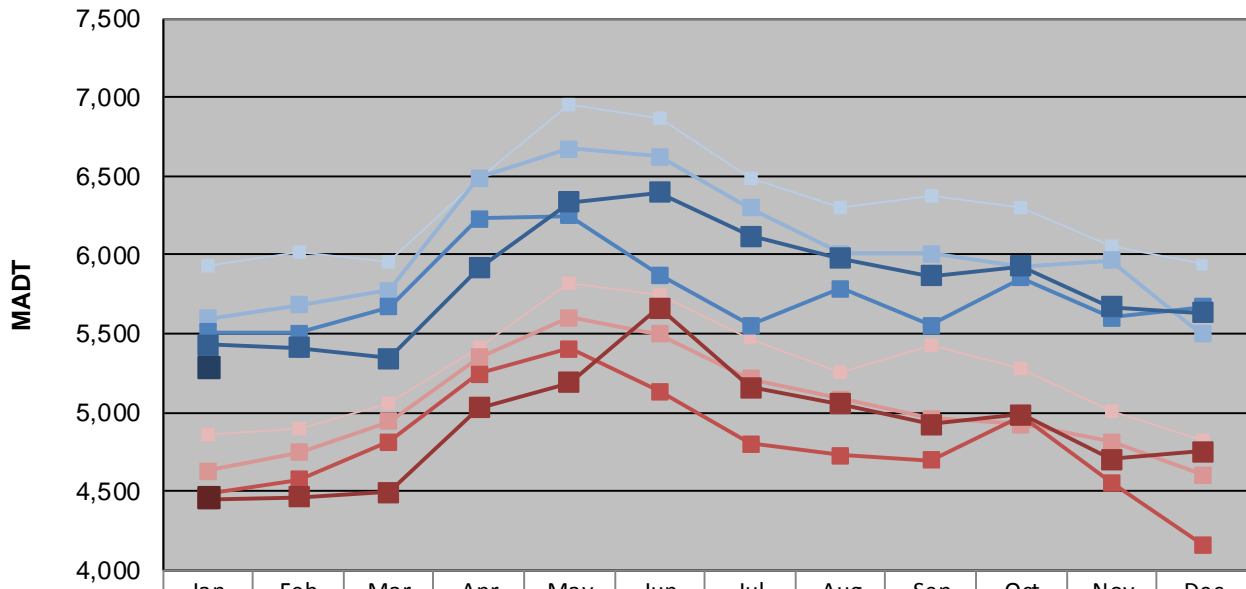
MONTHLY REPORT, STATION NO. 460 (ATR)

JANUARY 2012

Station Measurement: VOLUME		
Route: MSAS 128	Route Direction: E/W	Lanes: 2
County: Dakota	Closest City: Hastings	
Functional Class: Urban Collector		
Location: W OF MSAS122 (PINE ST) IN HASTINGS		
Ref Post: 000+00.840	True Mile: 0.84	Sequence No. 9909
Volume: 156,030		MADT: 5,033
Weekday (M-F) MADT: 5,294		Weekend (Sa-Su) MADT: 4,468



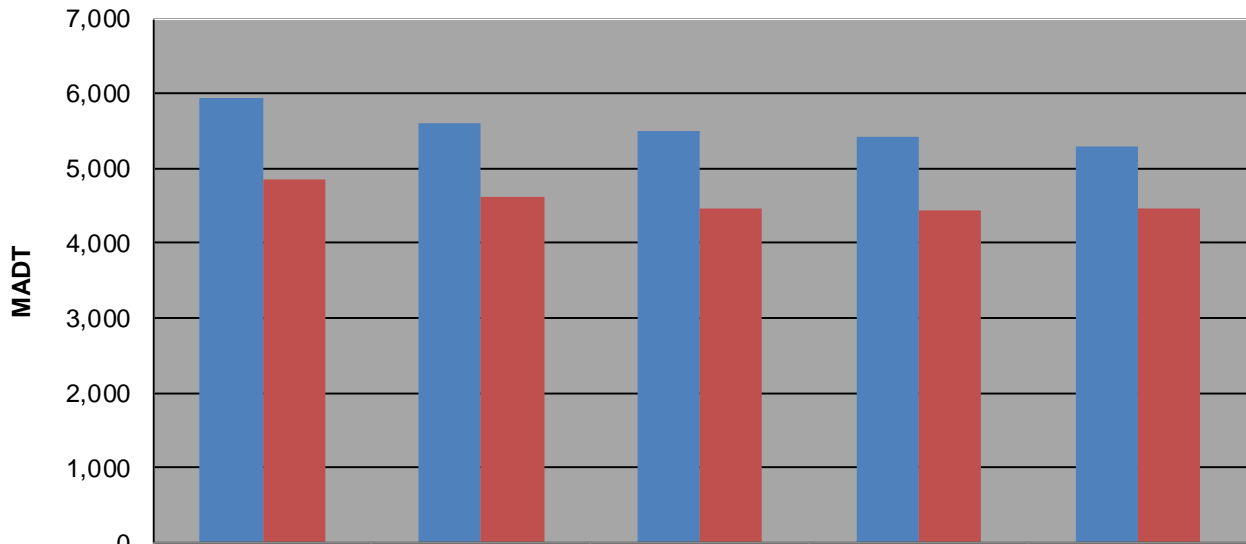
Weekday (WD)/Weekend (WE) Monthly Average Daily Traffic



	Jan	Feb	Mar	Apr	May	Jun	Jul	Aug	Sep	Oct	Nov	Dec
'08 WD	5,928	6,018	5,956	6,486	6,954	6,870	6,482	6,296	6,376	6,300	6,060	5,940
'08 WE	4,856	4,898	5,056	5,408	5,826	5,748	5,466	5,248	5,422	5,274	5,002	4,820
'09 WD	5,596	5,682	5,776	6,488	6,674	6,622	6,300	6,006	6,006	5,928	5,966	5,498
'09 WE	4,628	4,746	4,944	5,346	5,604	5,498	5,212	5,082	4,960	4,926	4,816	4,606
'10 WD	5,508	5,504	5,670	6,232	6,248	5,870	5,550	5,786	5,552	5,854	5,604	5,672
'10 WE	4,478	4,574	4,814	5,242	5,402	5,132	4,798	4,730	4,698	4,982	4,556	4,158
'11 WD	5,432	5,412	5,342	5,918	6,336	6,398	6,116	5,980	5,866	5,930	5,670	5,632
'11 WE	4,448	4,460	4,496	5,028	5,186	5,664	5,158	5,056	4,924	4,986	4,704	4,754
'12 WD	5,294											
'12 WE	4,468											

Note: 'Weekday' defined as Monday-Friday, 'Weekend' defined as Saturday-Sunday

Weekday/Weekend Monthly Average Daily Traffic ('08-'12)



	Jan-08	Jan-09	Jan-10	Jan-11	Jan-12
Weekday	5,928	5,596	5,508	5,432	5,294
Weekend	4,856	4,628	4,478	4,448	4,468