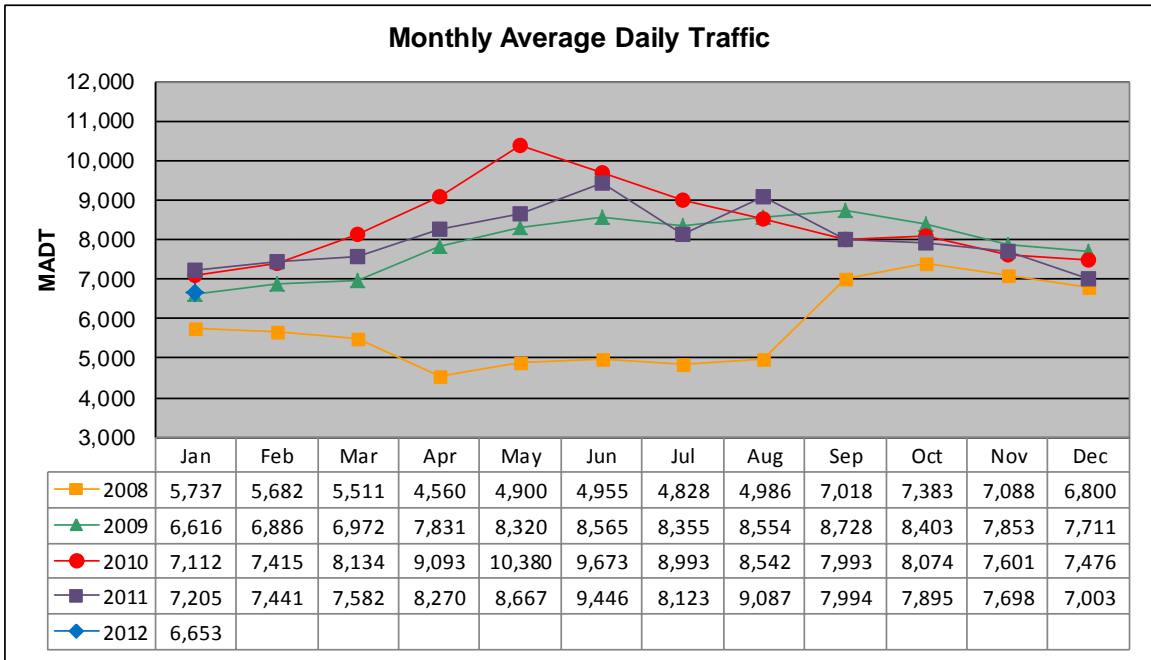


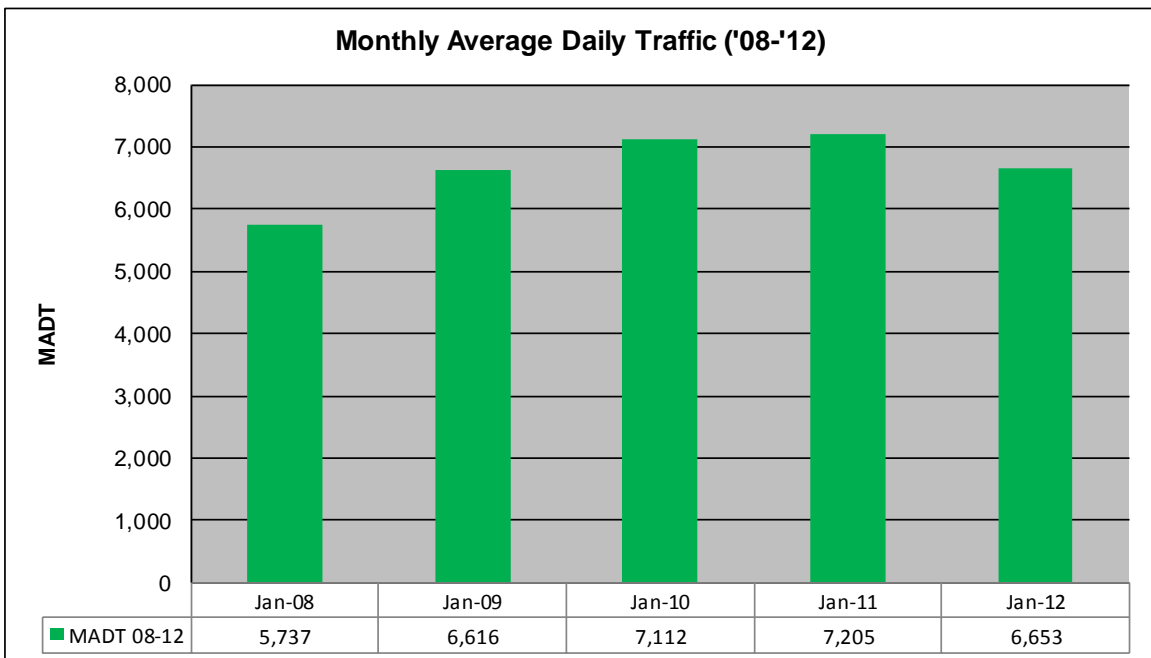
MONTHLY REPORT, STATION NO. 422 (ATR)

JANUARY 2012

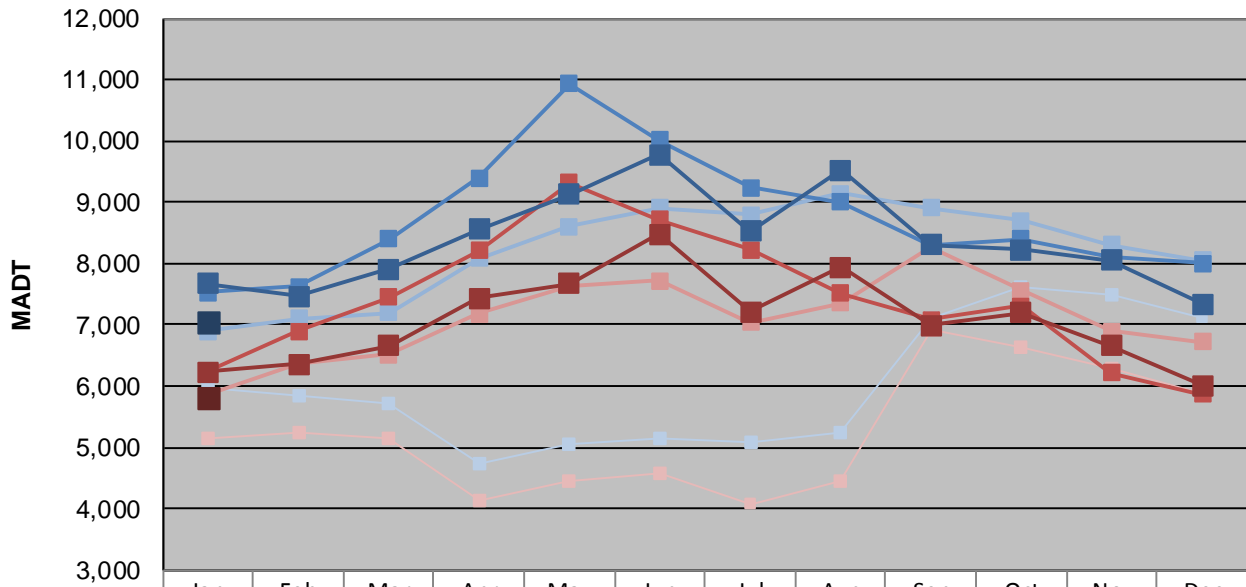
Station Measurement: VOLUME		
Route: CSAH 14	Route Direction: E/W	Lanes: 2
County: Anoka		Closest City: Blaine
Functional Class: Urban Other Principal Arterial		
Location: .7 MI W OF CSAH17 (LEXINGTON AVE NE) IN BLAINE		
Ref Post: 010+00.100	True Mile: 10.1	Sequence No. 9893
Volume: 206,258		MADT: 6,653
Weekday (M-F) MADT: 7,042		Weekend (Sa-Su) MADT: 5,810



Note: Decrease in traffic January to September 2008 due to construction on TH 65 & CSAH 14



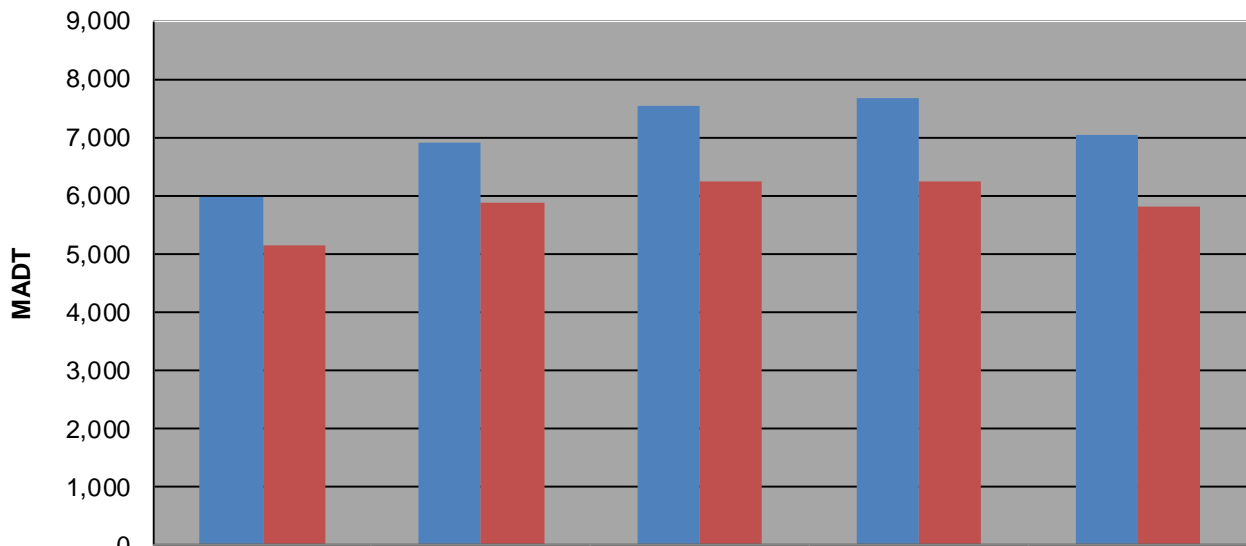
Weekday (WD)/Weekend (WE) Monthly Average Daily Traffic



	Jan	Feb	Mar	Apr	May	Jun	Jul	Aug	Sep	Oct	Nov	Dec
'08 WD	5,960	5,834	5,712	4,720	5,052	5,132	5,078	5,230	7,106	7,630	7,486	7,124
'08 WE	5,144	5,232	5,136	4,138	4,450	4,568	4,086	4,436	6,916	6,620	6,292	5,866
'09 WD	6,896	7,098	7,204	8,078	8,608	8,912	8,796	9,142	8,906	8,694	8,310	8,046
'09 WE	5,858	6,358	6,514	7,182	7,646	7,714	7,038	7,354	8,268	7,554	6,904	6,730
'10 WD	7,532	7,622	8,400	9,392	10,926	10,018	9,244	9,000	8,308	8,394	8,098	8,010
'10 WE	6,228	6,902	7,450	8,212	9,326	8,720	8,220	7,516	7,092	7,306	6,220	5,862
'11 WD	7,670	7,474	7,910	8,566	9,128	9,778	8,522	9,520	8,308	8,226	8,046	7,338
'11 WE	6,234	6,366	6,656	7,434	7,678	8,478	7,216	7,940	6,986	7,192	6,658	6,014
'12 WD	7,042											
'12 WE	5,810											

Note: 'Weekday' defined as Monday-Friday, 'Weekend' defined as Saturday-Sunday

Weekday/Weekend Monthly Average Daily Traffic ('07-'11)



	Jan-08	Jan-09	Jan-10	Jan-11	Jan-12
Weekday	5,960	6,896	7,532	7,670	7,042
Weekend	5,144	5,858	6,228	6,234	5,810