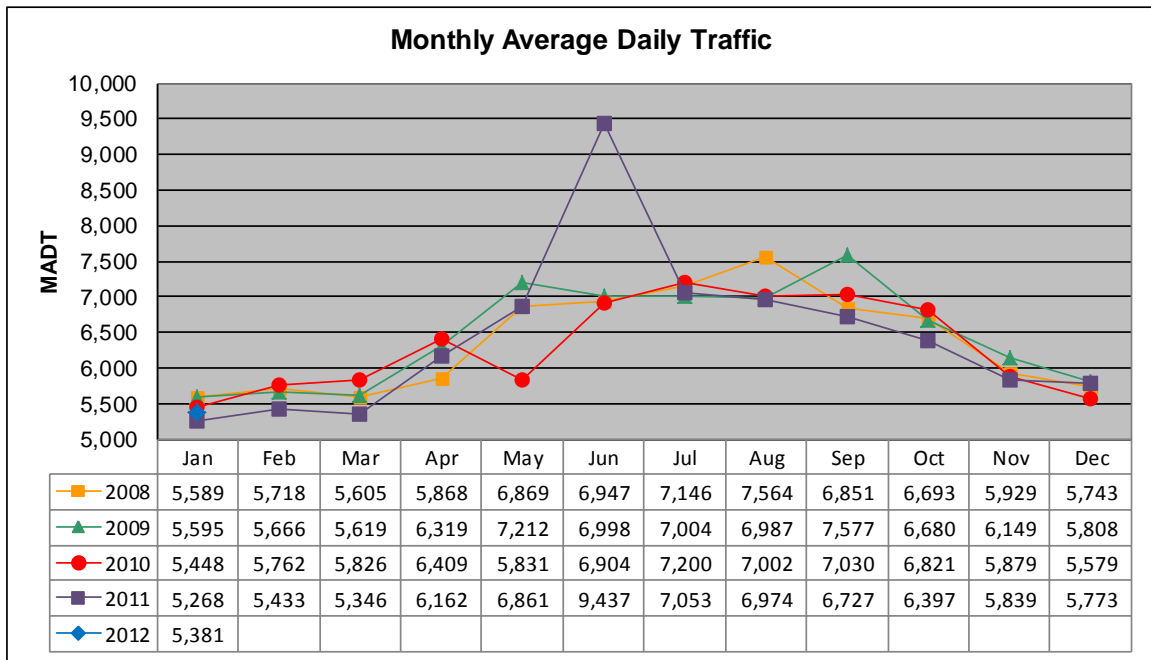


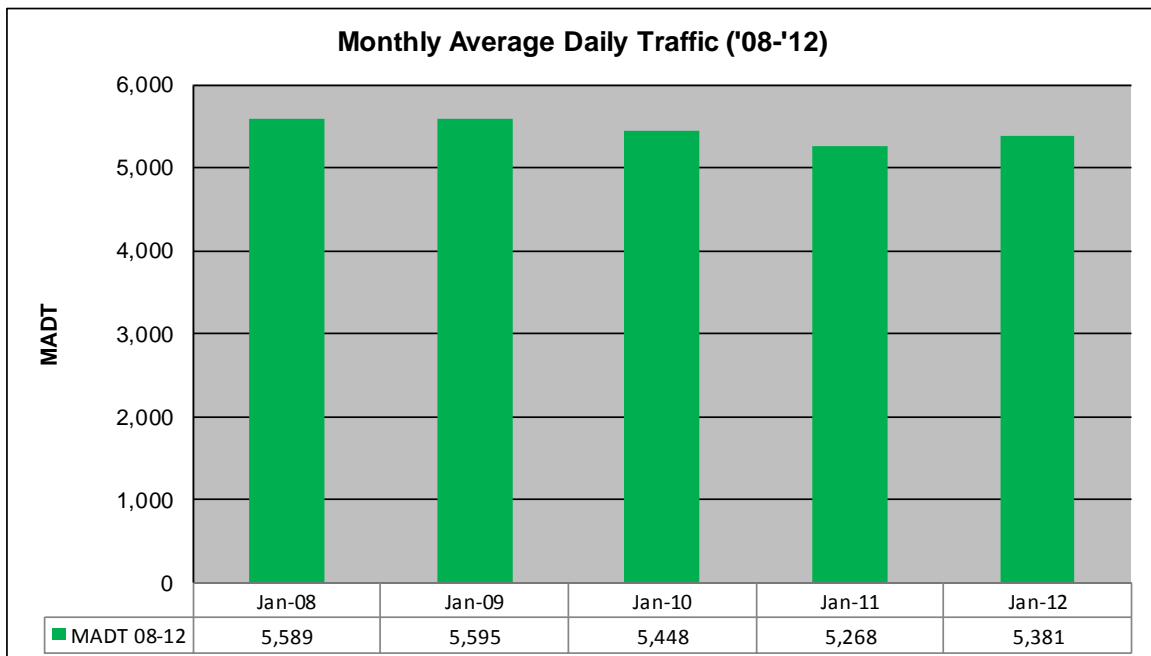
MONTHLY REPORT, STATION NO. 386 (ATR)

JANUARY 2012

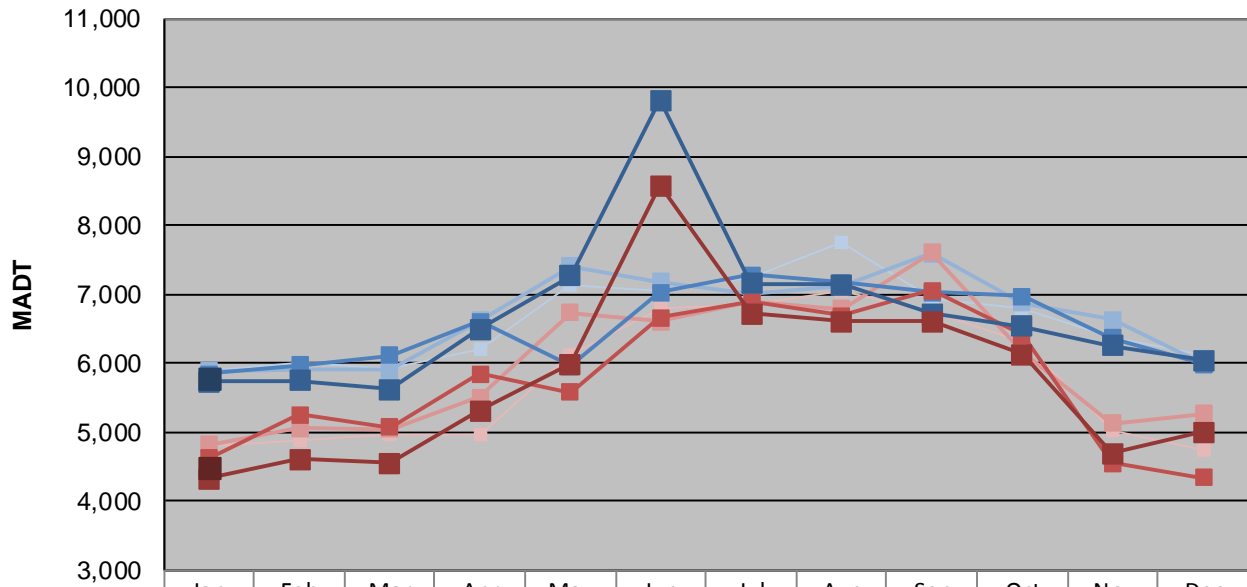
| | | |
|--|----------------------|------------------------------------|
| Station Measurement: VOLUME | | |
| Route: TH 97 | Route Direction: N/S | Lanes: 2 |
| County: Washington | | Closest City: Scandia |
| Functional Class: Rural Minor Arterial | | |
| Location: E OF CSAH1 (LOFTON AVE N) IN SCANDIA | | |
| Ref Post: 008+00.844 | True Mile: 8.807 | Sequence No. 9875 |
| Volume: 166,823 | | MADT: 5,381 |
| Weekday (M-F) MADT: 5,784 | | Weekend (Sa-Su) MADT: 4,500 |



Note: Decrease in traffic May 2010 due to construction on I-35... Increase in traffic June 2011 due to detours from TH 8 and I-35



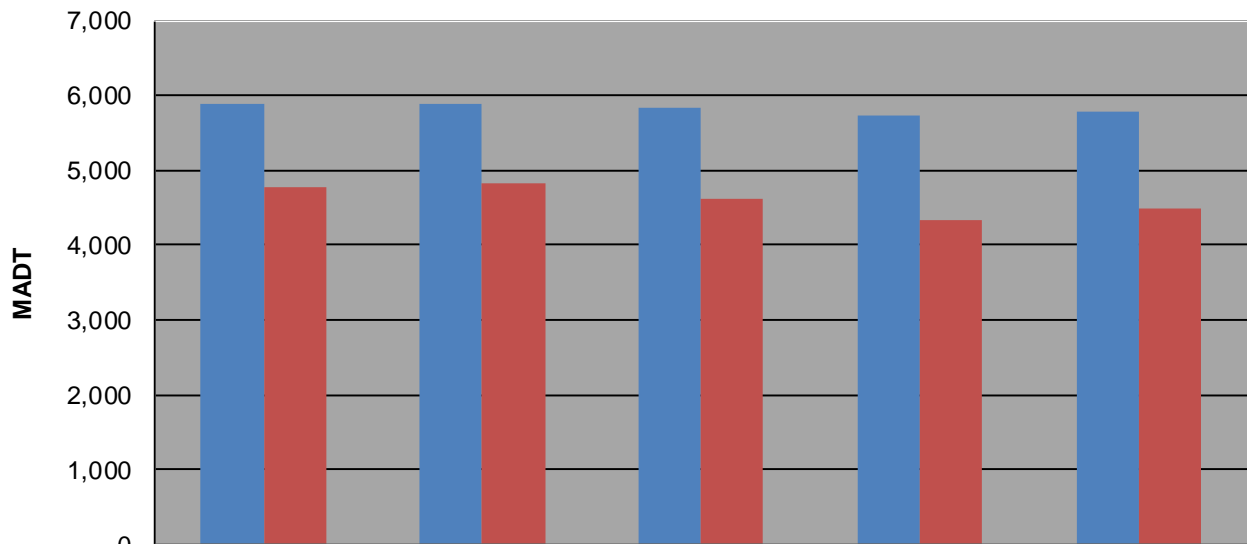
Weekday (WD)/Weekend (WE) Monthly Average Daily Traffic



| | Jan | Feb | Mar | Apr | May | Jun | Jul | Aug | Sep | Oct | Nov | Dec |
|--------|-------|-------|-------|-------|-------|-------|-------|-------|-------|-------|-------|-------|
| '08 WD | 5,888 | 6,006 | 5,924 | 6,192 | 7,132 | 7,046 | 7,248 | 7,764 | 6,936 | 6,794 | 6,378 | 6,114 |
| '08 WE | 4,782 | 4,882 | 4,974 | 4,970 | 6,128 | 6,782 | 6,858 | 7,054 | 6,726 | 6,318 | 5,032 | 4,738 |
| '09 WD | 5,888 | 5,908 | 5,898 | 6,612 | 7,402 | 7,186 | 7,000 | 7,106 | 7,594 | 6,868 | 6,626 | 6,002 |
| '09 WE | 4,822 | 5,060 | 5,040 | 5,506 | 6,732 | 6,598 | 6,902 | 6,782 | 7,606 | 6,154 | 5,124 | 5,268 |
| '10 WD | 5,840 | 5,964 | 6,110 | 6,598 | 5,950 | 7,020 | 7,274 | 7,164 | 7,024 | 6,972 | 6,370 | 5,984 |
| '10 WE | 4,616 | 5,260 | 5,066 | 5,844 | 5,582 | 6,654 | 6,880 | 6,690 | 7,050 | 6,402 | 4,546 | 4,338 |
| '11 WD | 5,728 | 5,752 | 5,620 | 6,486 | 7,266 | 9,814 | 7,154 | 7,138 | 6,720 | 6,528 | 6,248 | 6,044 |
| '11 WE | 4,326 | 4,608 | 4,556 | 5,314 | 5,978 | 8,570 | 6,710 | 6,602 | 6,608 | 6,126 | 4,688 | 4,994 |
| '12 WD | 5,784 | | | | | | | | | | | |
| '12 WE | 4,500 | | | | | | | | | | | |

Note: 'Weekday' defined as Monday-Friday, 'Weekend' defined as Saturday-Sunday

Weekday/Weekend Monthly Average Daily Traffic ('08-'12)



| | Jan-08 | Jan-09 | Jan-10 | Jan-11 | Jan-12 |
|---------|--------|--------|--------|--------|--------|
| Weekday | 5,888 | 5,888 | 5,840 | 5,728 | 5,784 |
| Weekend | 4,782 | 4,822 | 4,616 | 4,326 | 4,500 |