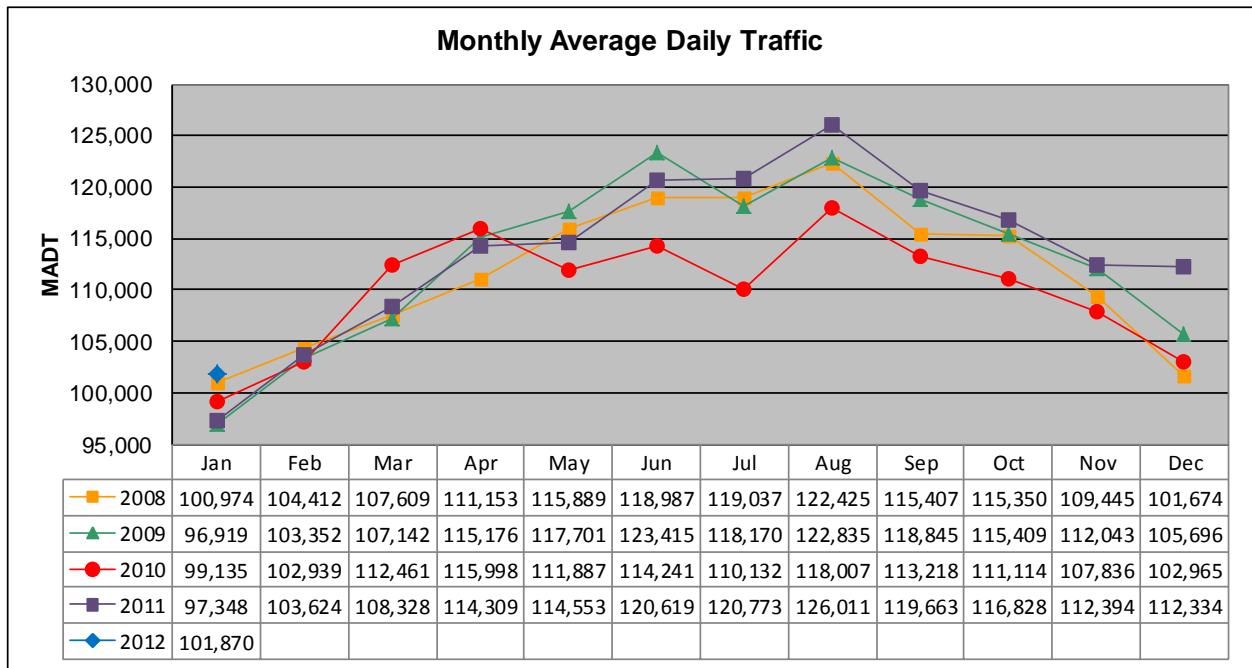


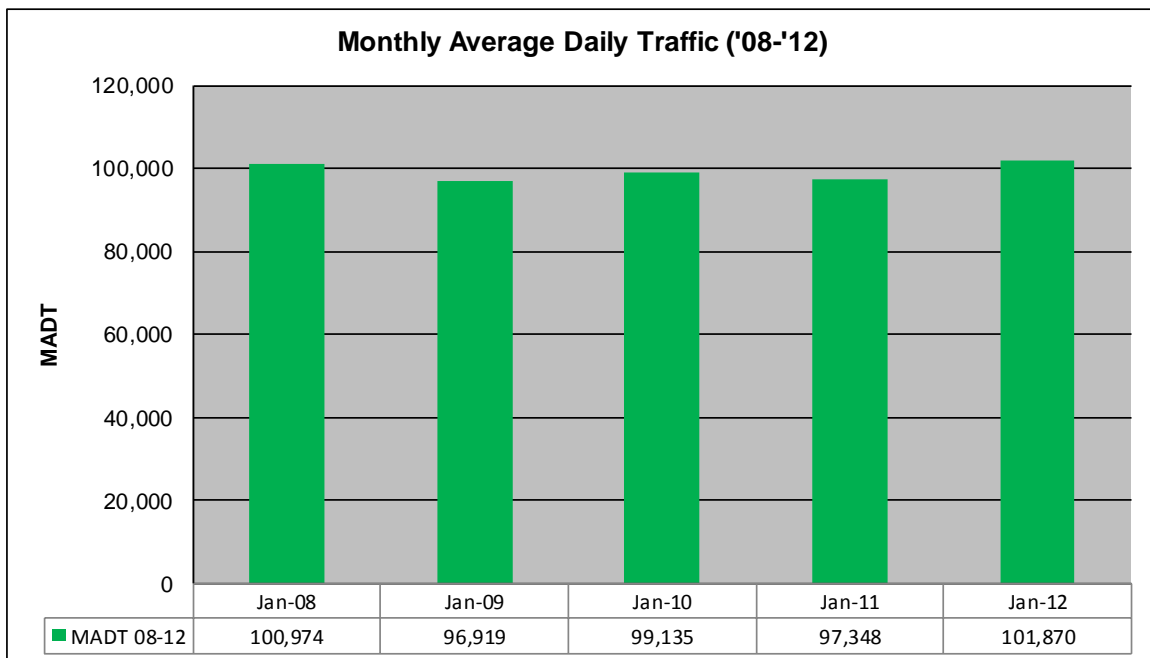
MONTHLY REPORT, STATION NO. 342 (ATR)

JANUARY 2012

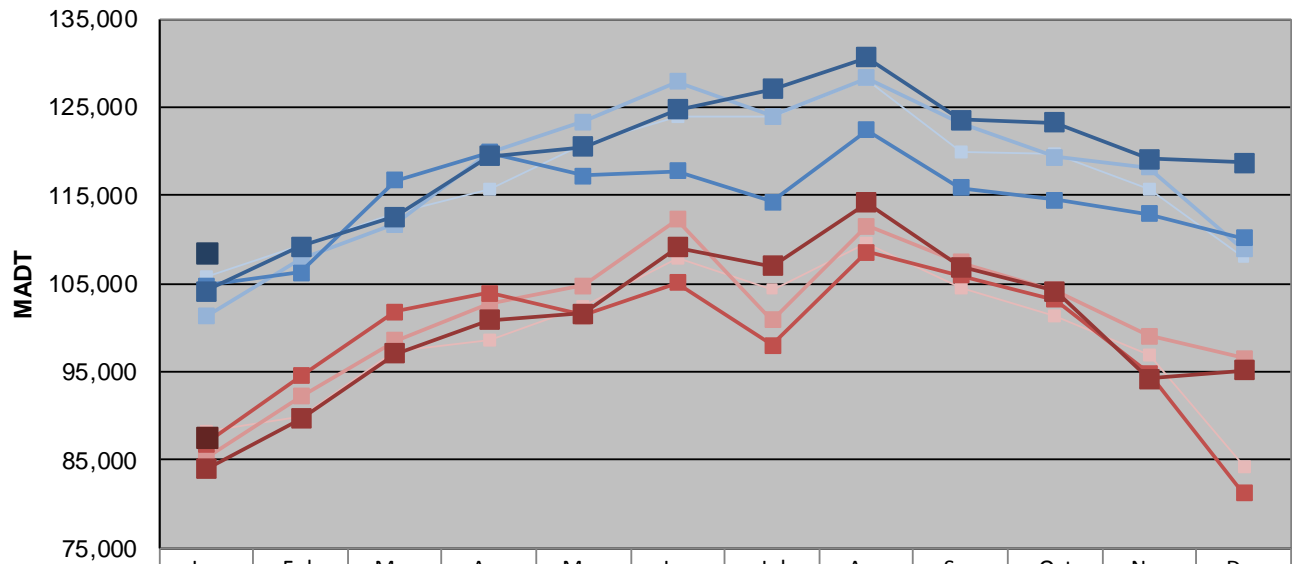
| | | |
|---|----------------------|-------------------------------------|
| Station Measurement: VOLUME | | |
| Route: I-94 | Route Direction: E/W | Lanes: 6 |
| County: Hennepin | | Closest City: Maple Grove |
| Functional Class: Urban Principal Arterial - Interstate | | |
| Location: S OF CR30 (93RD AVE N) IN MAPLE GROVE | | |
| Ref Post: 214+00.030 | True Mile: 214.71 | Sequence No. 9859 |
| Volume: 3,157,960 | | MADT: 101,870 |
| Weekday (M-F) MADT: 108,440 | | Weekend (Sa-Su) MADT: 87,712 |



Note: Decrease in traffic May to July 2010 due to construction on I-94



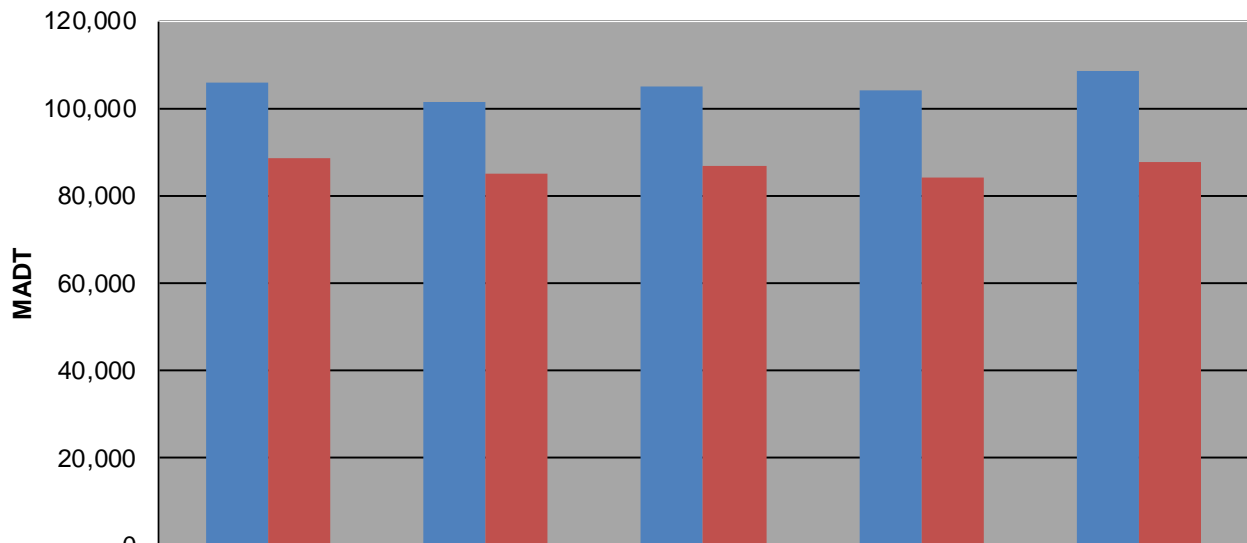
Weekday (WD)/Weekend (WE) Monthly Average Daily Traffic



| | Jan | Feb | Mar | Apr | May | Jun | Jul | Aug | Sep | Oct | Nov | Dec |
|--------|---------|---------|---------|---------|---------|---------|---------|---------|---------|---------|---------|---------|
| '08 WD | 105,718 | 109,354 | 112,914 | 115,782 | 120,770 | 124,030 | 123,834 | 128,226 | 119,946 | 119,668 | 115,736 | 107,976 |
| '08 WE | 88,312 | 89,962 | 97,234 | 98,542 | 102,454 | 107,888 | 104,366 | 109,612 | 104,526 | 101,424 | 96,866 | 84,304 |
| '09 WD | 101,248 | 107,822 | 111,710 | 119,738 | 123,400 | 127,870 | 123,992 | 128,358 | 123,216 | 119,304 | 118,176 | 108,866 |
| '09 WE | 85,132 | 92,178 | 98,506 | 102,816 | 104,786 | 112,270 | 100,852 | 111,550 | 107,388 | 104,266 | 99,088 | 96,542 |
| '10 WD | 104,824 | 106,298 | 116,672 | 119,892 | 117,240 | 117,770 | 114,268 | 122,356 | 115,848 | 114,450 | 112,890 | 110,170 |
| '10 WE | 86,840 | 94,544 | 101,794 | 103,954 | 101,372 | 105,056 | 98,012 | 108,556 | 105,914 | 103,240 | 94,902 | 81,256 |
| '11 WD | 104,160 | 109,174 | 112,636 | 119,406 | 120,536 | 124,712 | 127,024 | 130,598 | 123,560 | 123,216 | 119,120 | 118,692 |
| '11 WE | 83,982 | 89,722 | 97,034 | 100,868 | 101,646 | 109,132 | 106,946 | 114,196 | 106,888 | 104,168 | 94,212 | 95,158 |
| '12 WD | 108,440 | | | | | | | | | | | |
| '12 WE | 87,712 | | | | | | | | | | | |

Note: 'Weekday' defined as Monday-Friday, 'Weekend' defined as Saturday-Sunday

Weekday/Weekend Monthly Average Daily Traffic ('08-'12)



| | Jan-08 | Jan-09 | Jan-10 | Jan-11 | Jan-12 |
|---------|---------|---------|---------|---------|---------|
| Weekday | 105,718 | 101,248 | 104,824 | 104,160 | 108,440 |
| Weekend | 88,312 | 85,132 | 86,840 | 83,982 | 87,712 |