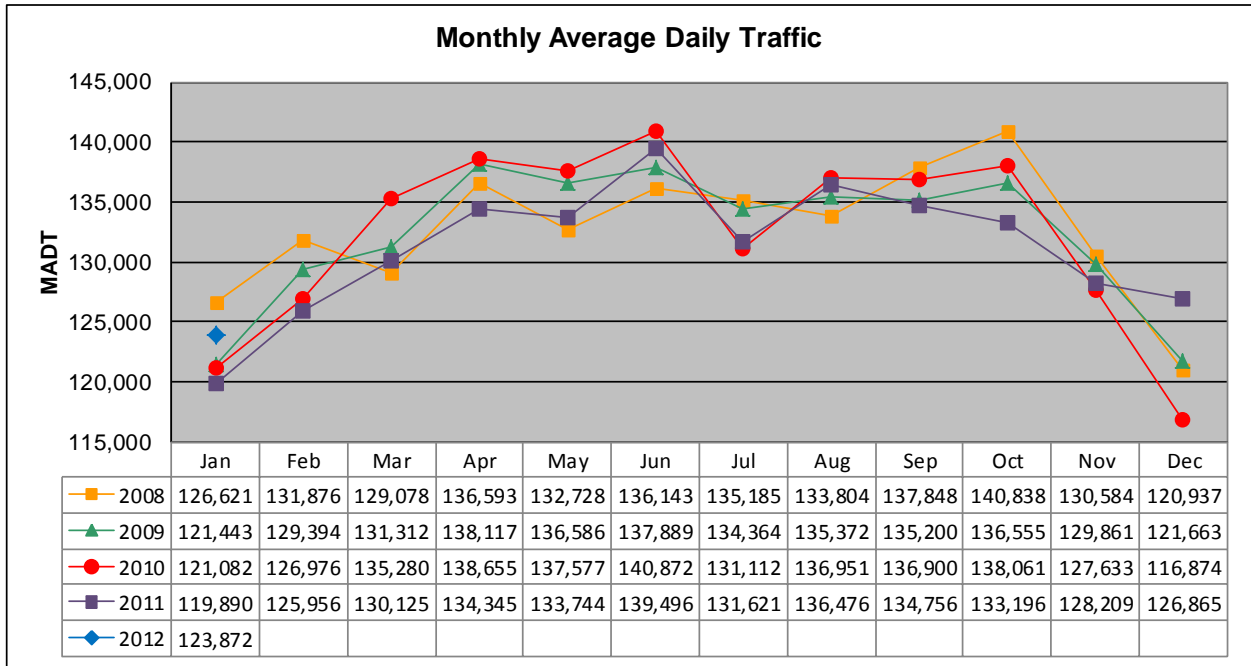


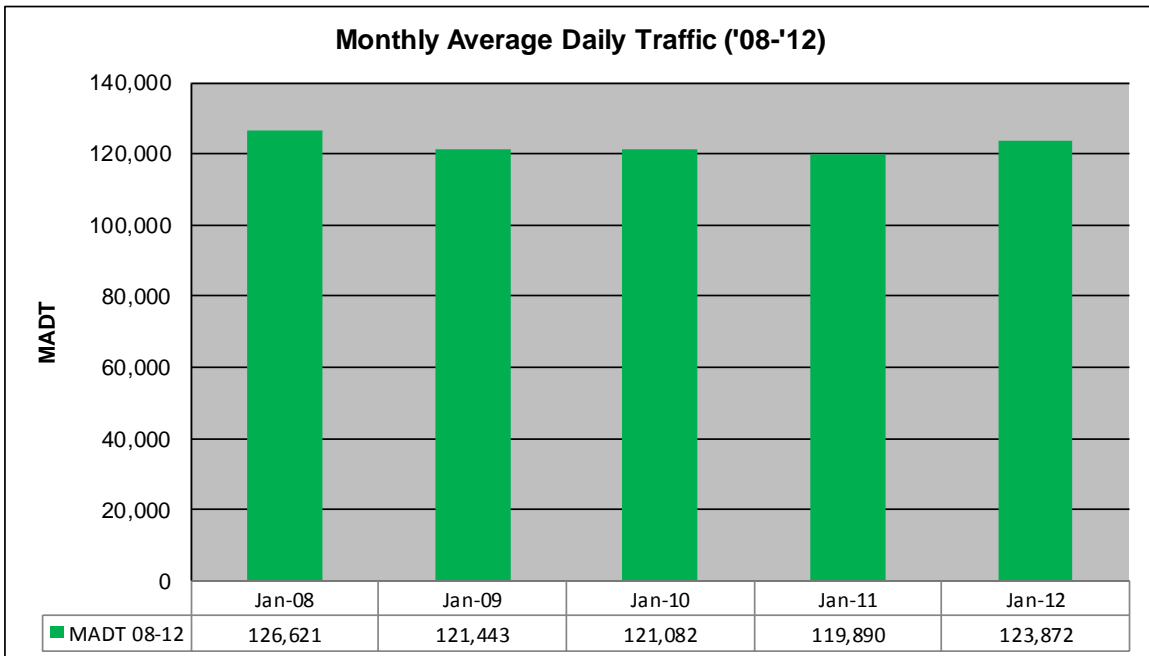
# MONTHLY REPORT, STATION NO. 326 (ATR)

## JANUARY 2011

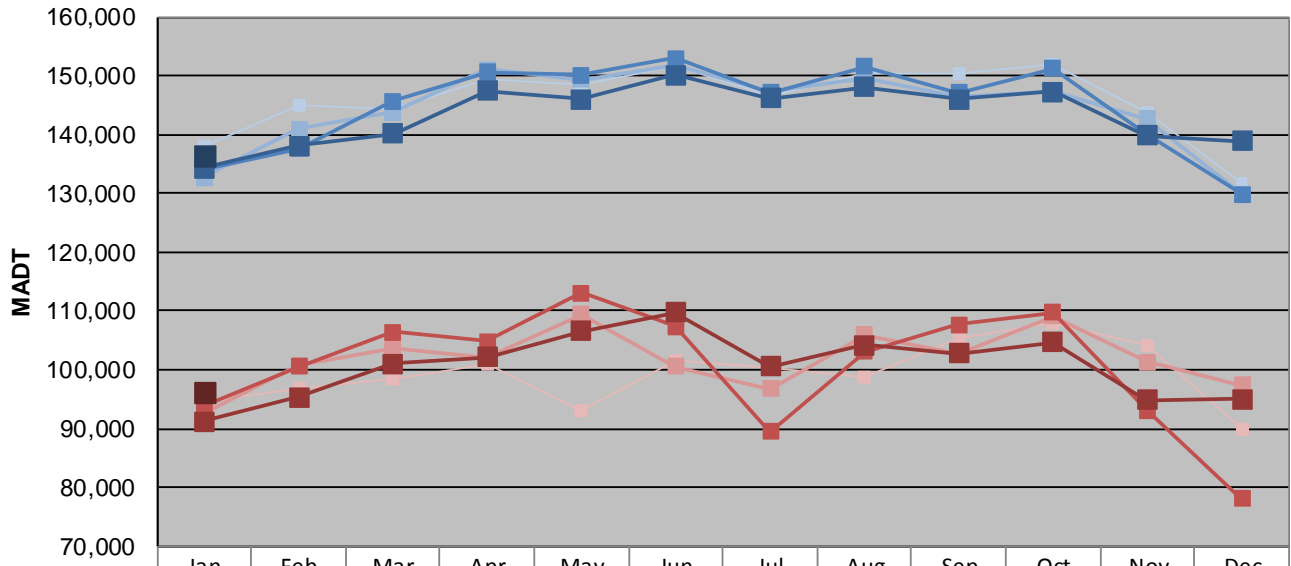
|   |                      |                                     |
|---|----------------------|-------------------------------------|
| Station Measurement: VOLUME                             |                      |                                     |
| Route: I-394  | Route Direction: E/W | Lanes: 6                            |
| County: Hennepin  |                      | Closest City: Minneapolis           |
| Functional Class: Urban Principal Arterial - Interstate |                      |                                     |
| Location: E OF TH100 IN MINNEAPOLIS                     |                      |                                     |
| Ref Post: 007+00.250                                    | True Mile: 7.25      | Sequence No. 9850                   |
| <b>Volume: 3,840,038</b>                                |                      | <b>MADT: 123,872</b>                |
| <b>Weekday (M-F) MADT: 136,510</b>                      |                      | <b>Weekend (Sa-Su) MADT: 96,174</b> |



Note: Decrease in traffic June/July 2007 due to construction on I-394



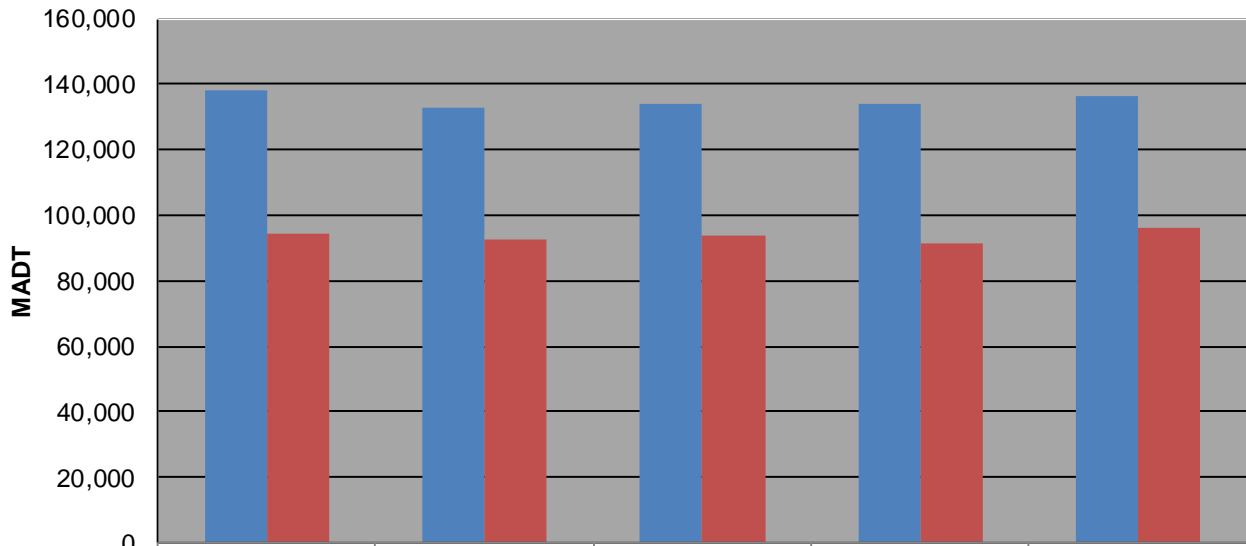
### Weekday (WD)/Weekend (WE) Monthly Average Daily Traffic



|        | Jan     | Feb     | Mar     | Apr     | May     | Jun     | Jul     | Aug     | Sep     | Oct     | Nov     | Dec     |
|--------|---------|---------|---------|---------|---------|---------|---------|---------|---------|---------|---------|---------|
| '08 WD | 137,928 | 144,874 | 144,200 | 149,312 | 148,334 | 151,774 | 146,510 | 150,422 | 150,388 | 151,844 | 143,740 | 131,788 |
| '08 WE | 94,554  | 96,952  | 98,436  | 101,044 | 92,906  | 101,550 | 100,308 | 98,774  | 105,502 | 107,998 | 104,274 | 90,018  |
| '09 WD | 132,756 | 140,882 | 143,756 | 151,044 | 149,266 | 151,902 | 147,308 | 149,668 | 146,534 | 147,210 | 142,658 | 129,836 |
| '09 WE | 92,674  | 100,674 | 103,664 | 102,182 | 109,384 | 100,496 | 96,714  | 105,986 | 102,858 | 109,054 | 101,400 | 97,474  |
| '10 WD | 134,204 | 137,542 | 145,678 | 150,662 | 150,088 | 152,940 | 147,150 | 151,596 | 147,090 | 151,236 | 140,068 | 129,848 |
| '10 WE | 93,936  | 100,560 | 106,398 | 104,806 | 113,084 | 107,424 | 89,432  | 103,036 | 107,696 | 109,828 | 93,158  | 78,122  |
| '11 WD | 134,220 | 138,160 | 140,194 | 147,468 | 145,970 | 150,066 | 146,210 | 148,022 | 145,974 | 147,206 | 139,768 | 138,944 |
| '11 WE | 91,298  | 95,422  | 101,116 | 102,128 | 106,656 | 109,794 | 100,622 | 104,160 | 102,790 | 104,690 | 94,884  | 94,962  |
| '12 WD | 136,510 |         |         |         |         |         |         |         |         |         |         |         |
| '12 WE | 96,174  |         |         |         |         |         |         |         |         |         |         |         |

Note: 'Weekday' defined as Monday-Friday, 'Weekend' defined as Saturday-Sunday

### Weekday/Weekend Monthly Average Daily Traffic ('08-'12)



|         | Jan-08  | Jan-09  | Jan-10  | Jan-11  | Jan-12  |
|---------|---------|---------|---------|---------|---------|
| Weekday | 137,928 | 132,756 | 134,204 | 134,220 | 136,510 |
| Weekend | 94,554  | 92,674  | 93,936  | 91,298  | 96,174  |