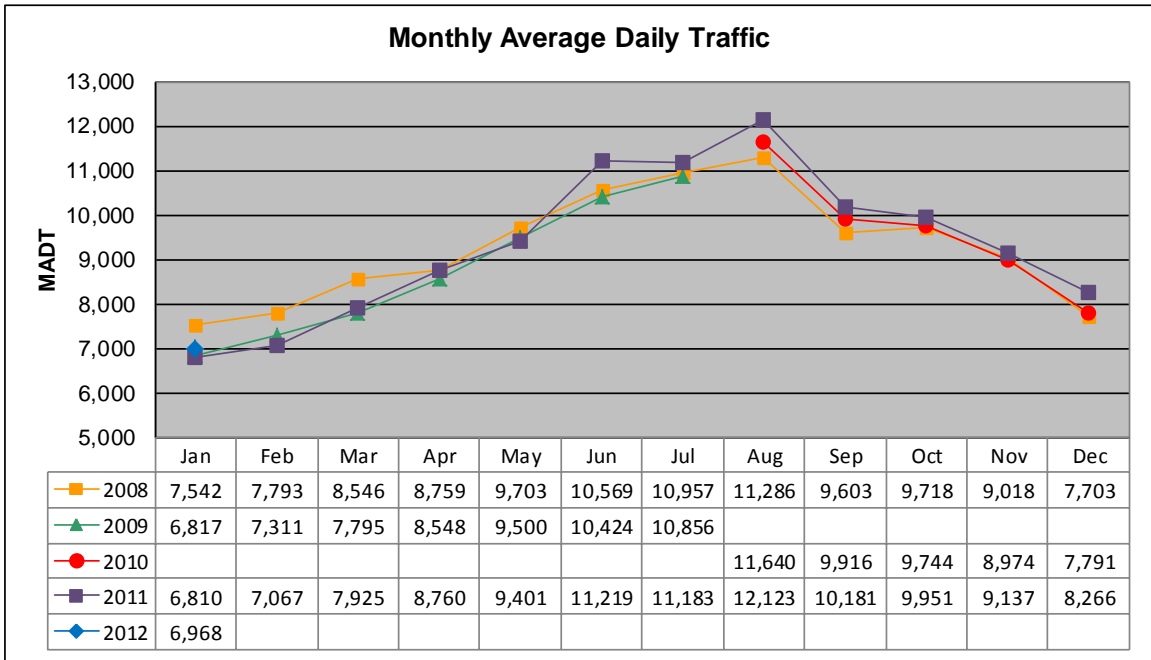


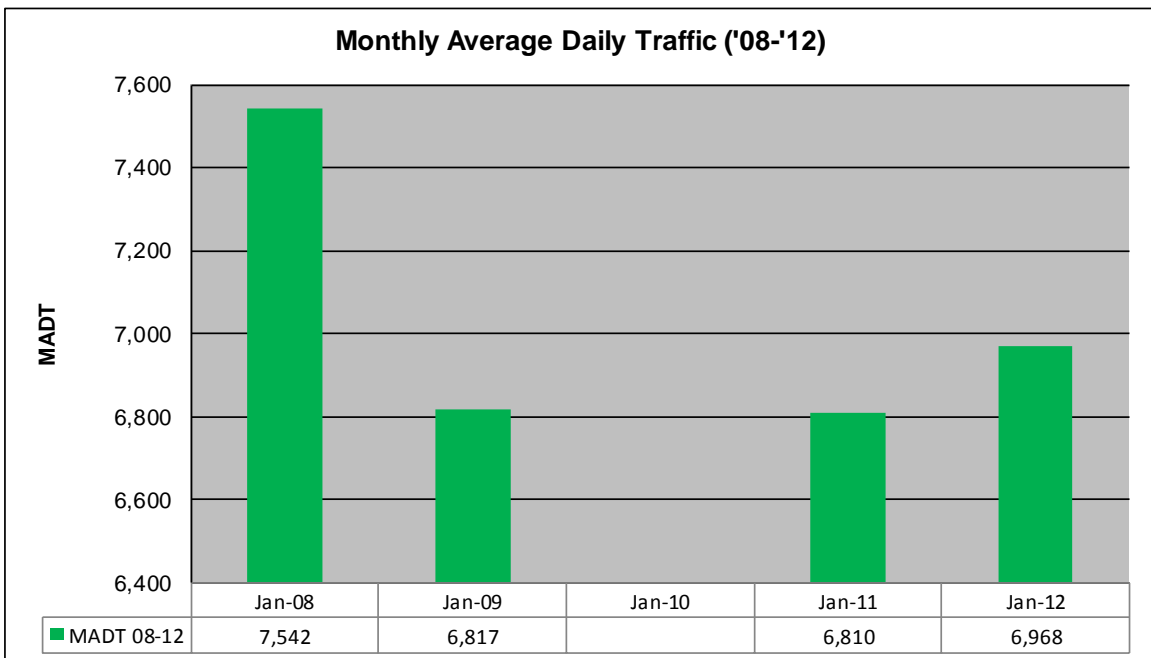
MONTHLY REPORT, STATION NO. 227 (ATR)

JANUARY 2012

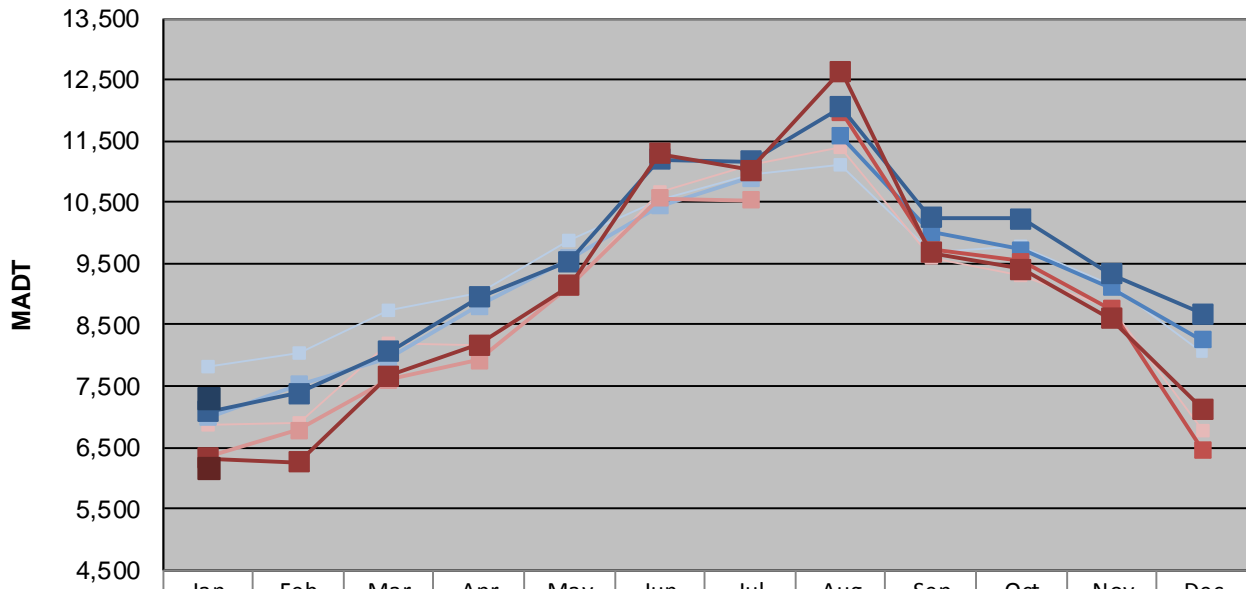
Station Measurement: VOLUME/SPEED/CLASS		
Route: I-90	Route Direction: E/W	Lanes: 4
County: Freeborn		Closest City: Albert Lea
Functional Class: Rural Principal Arterial - Interstate		
Location: SW OF TH13, W OF ALBERT LEA		
Ref Post: 153+00.700	True Mile: 152.36	Sequence No. 9833
Volume: 216,013		MADT: 6,968
Weekday (M-F) MADT: 7,316		Weekend (Sa-Su) MADT: 6,160



Note: No data August 2009 to July 2010 due to sensors destroyed by construction



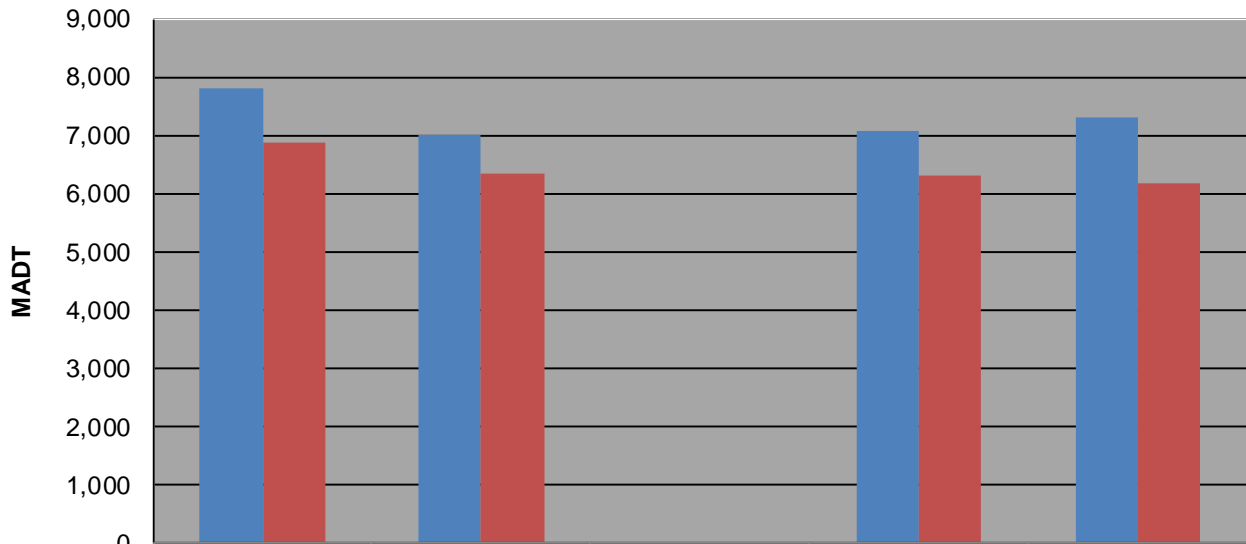
Weekday (WD)/Weekend (WE) Monthly Average Daily Traffic



	Jan	Feb	Mar	Apr	May	Jun	Jul	Aug	Sep	Oct	Nov	Dec
'08 WD	7,816	8,048	8,744	9,024	9,876	10,528	10,938	11,112	9,674	9,794	9,140	8,052
'08 WE	6,876	6,892	8,196	8,152	9,106	10,674	11,106	11,394	9,576	9,318	8,776	6,786
'09 WD	6,992	7,522	7,952	8,802	9,588	10,446	10,904					
'09 WE	6,340	6,788	7,598	7,924	9,124	10,558	10,540					
'10 WD								11,584	10,016	9,730	9,108	8,252
'10 WE								11,972	9,722	9,540	8,756	6,470
'11 WD	7,076	7,382	8,064	8,946	9,534	11,200	11,170	12,060	10,250	10,234	9,336	8,688
'11 WE	6,318	6,252	7,664	8,172	9,148	11,296	11,022	12,646	9,680	9,412	8,596	7,124
'12 WD	7,316											
'12 WE	6,160											

Note: 'Weekday' defined as Monday-Friday, 'Weekend' defined as Saturday-Sunday

Weekday/Weekend Monthly Average Daily Traffic ('08-'12)



	Jan-08	Jan-09	Jan-10	Jan-11	Jan-12
Weekday	7,816	6,992		7,076	7,316
Weekend	6,876	6,340		6,318	6,160