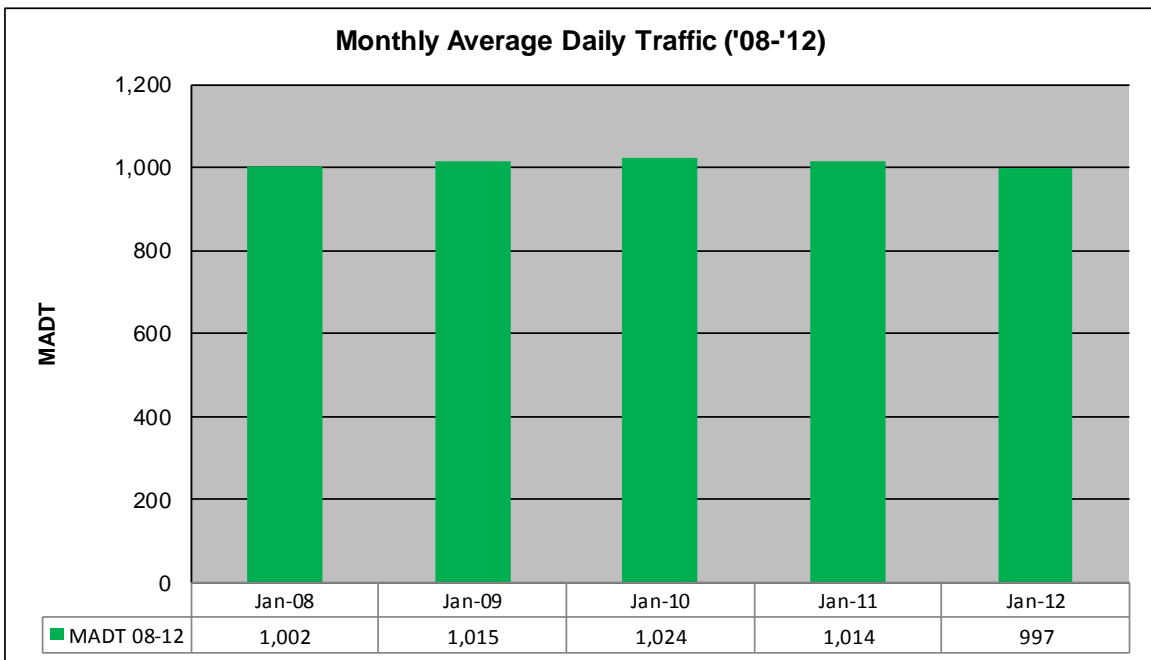
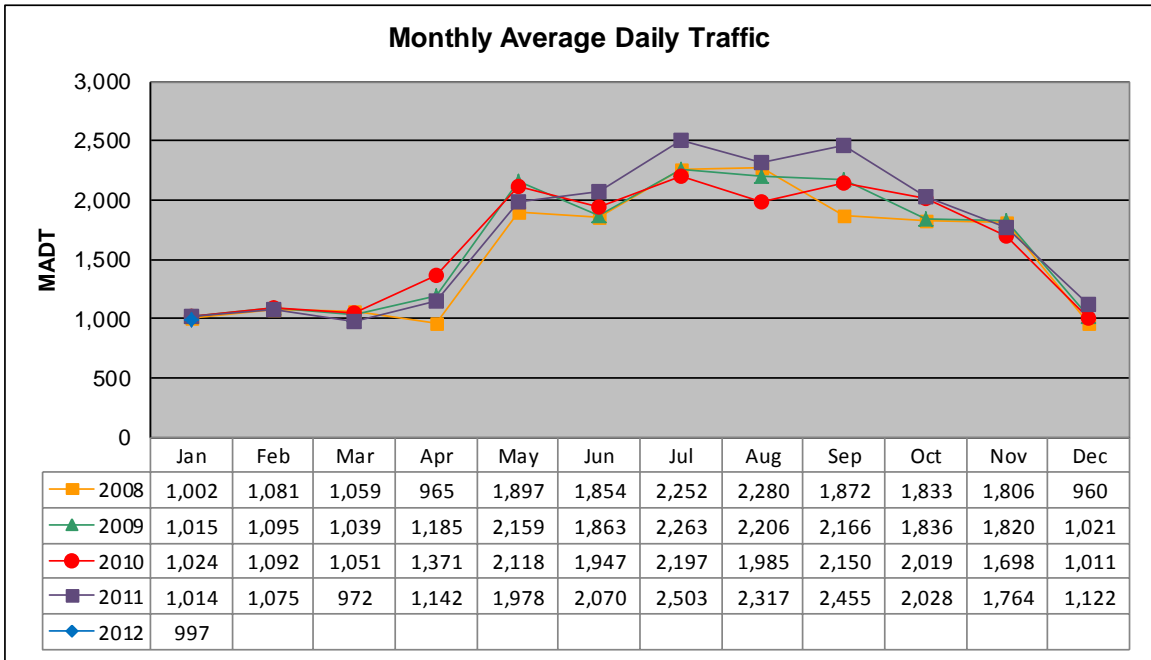


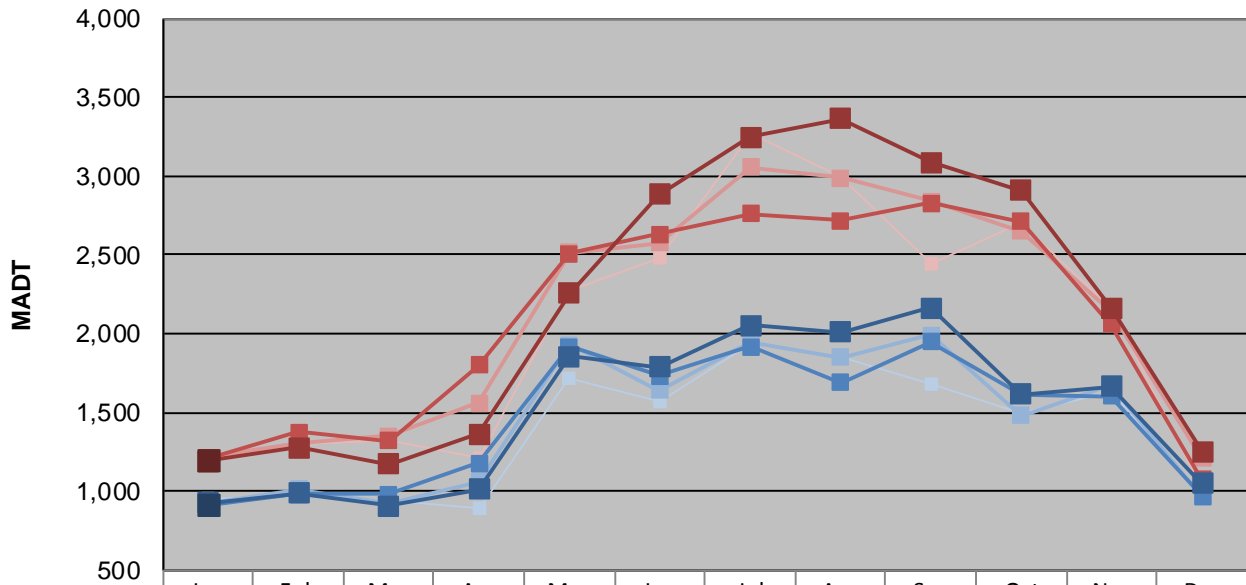
MONTHLY REPORT, STATION NO. 222 (ATR)

JANUARY 2012

Station Measurement: VOLUME/SPEED		
Route: TH 65	Route Direction: N/S	Lanes: 2
County: Aitkin	Closest City: McGrath	
Functional Class: Rural Minor Arterial		
Location: .6 MI N OF CSAH2, N OF MCGRATH		
Ref Post: 097+00.725	True Mile: 100.432	Sequence No. 6767
Volume: 30,893		MADT: 997
Weekday (M-F) MADT: 916		Weekend (Sa-Su) MADT: 1,196



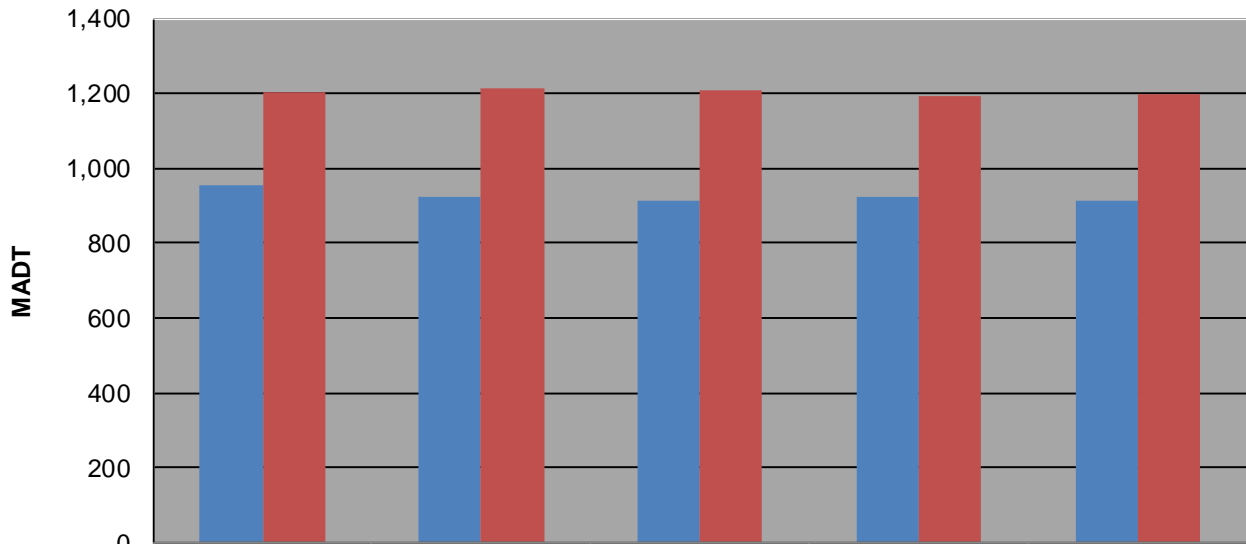
Weekday (WD)/Weekend (WE) Monthly Average Daily Traffic



	Jan	Feb	Mar	Apr	May	Jun	Jul	Aug	Sep	Oct	Nov	Dec
'08 WD	954	966	940	890	1,722	1,568	1,936	1,854	1,676	1,496	1,628	964
'08 WE	1,202	1,300	1,324	1,210	2,276	2,486	3,266	3,002	2,440	2,698	2,166	1,000
'09 WD	922	1,010	920	1,062	1,926	1,638	1,944	1,848	1,992	1,482	1,674	962
'09 WE	1,212	1,308	1,352	1,558	2,516	2,578	3,058	2,986	2,840	2,652	2,138	1,208
'10 WD	914	980	982	1,180	1,918	1,732	1,916	1,686	1,948	1,616	1,602	968
'10 WE	1,208	1,374	1,318	1,802	2,506	2,632	2,760	2,718	2,826	2,708	2,058	1,076
'11 WD	924	984	908	1,012	1,856	1,786	2,054	2,012	2,162	1,614	1,664	1,048
'11 WE	1,192	1,278	1,174	1,362	2,256	2,882	3,248	3,366	3,086	2,906	2,166	1,250
'12 WD	916											
'12 WE	1,196											

Note: 'Weekday' defined as Monday-Friday, 'Weekend' defined as Saturday-Sunday

Weekday/Weekend Monthly Average Daily Traffic ('08-'12)



	Jan-08	Jan-09	Jan-10	Jan-11	Jan-12
Weekday	954	922	914	924	916
Weekend	1,202	1,212	1,208	1,192	1,196