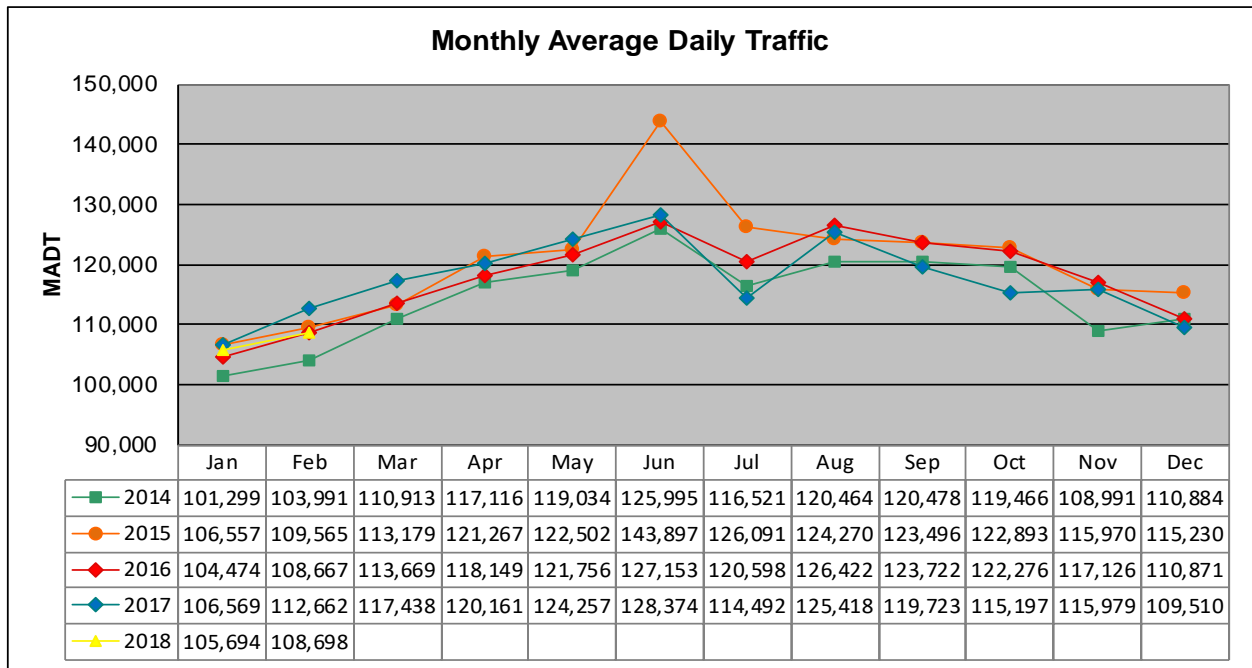


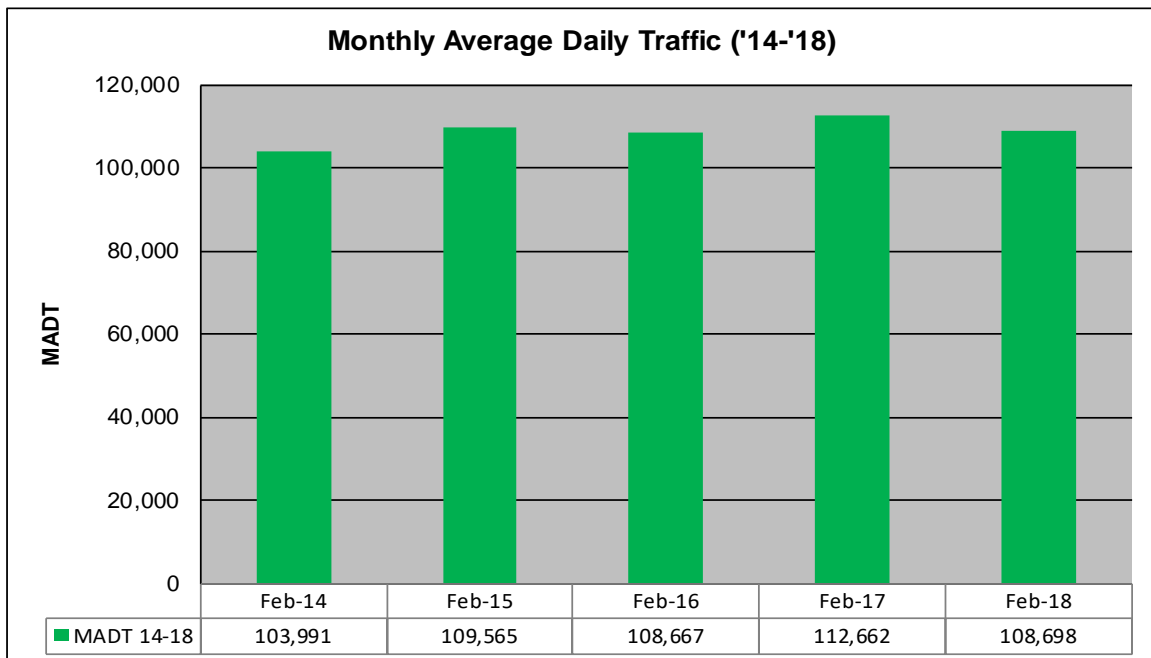
MONTHLY REPORT, STATION NO. 315 (ATR)

FEBRUARY 2018

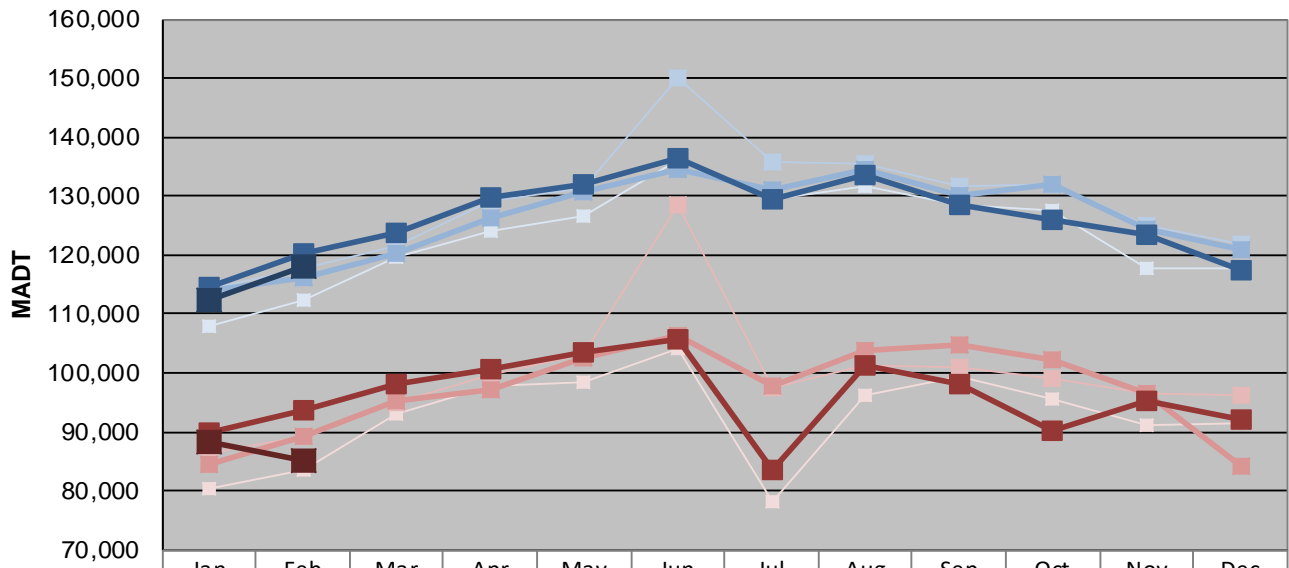
Station Measurement: VOLUME		
Route: I-35W	Route Direction: N/S	Lanes: 6
County: Hennepin		Closest City: Bloomington
Functional Class: Urban Principal Arterial - Interstate		
Location: N OF MN RIVER BRIDGE IN BLOOMINGTON		
Ref Post: 004+00.500	True Mile: 4.55	Sequence No. 9843
Volume: 3,043,542		MADT: 108,698
Weekday (M-F) MADT: 118,090		Weekend (Sa-Su) MADT: 85,220



Note: Increase in traffic June 2015 due to detours



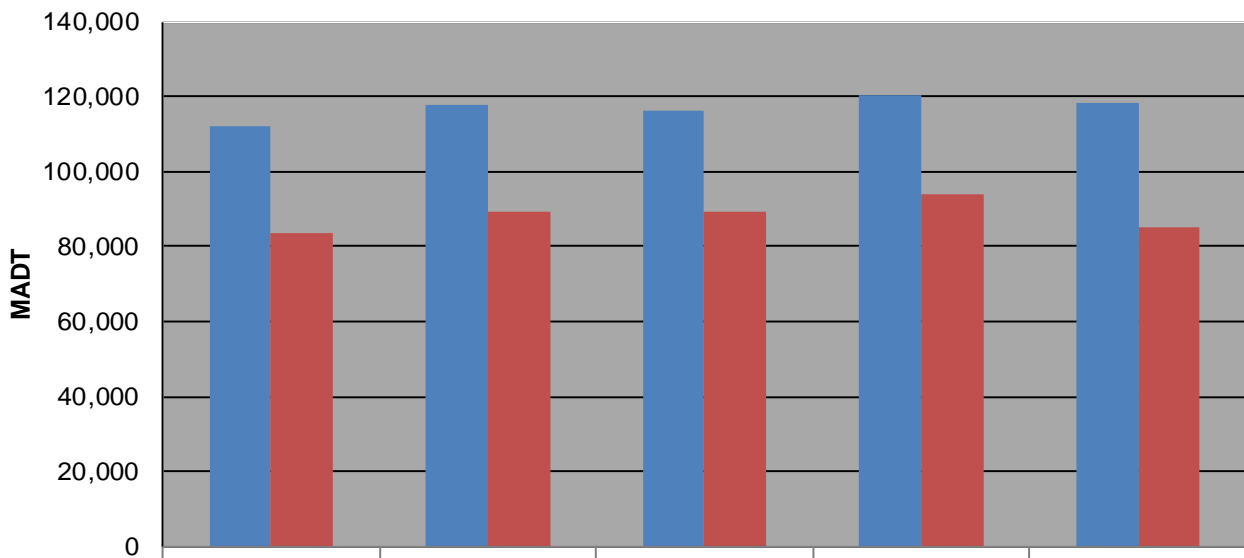
Weekday (WD)/Weekend (WE) Monthly Average Daily Traffic



	Jan	Feb	Mar	Apr	May	Jun	Jul	Aug	Sep	Oct	Nov	Dec
'14 WD	108,020	112,210	119,784	124,124	126,566	136,052	129,416	131,814	128,674	127,480	117,880	117,622
'14 WE	80,430	83,444	92,956	97,924	98,366	104,160	78,096	96,256	99,436	95,658	91,212	91,600
'15 WD	114,400	117,646	121,678	129,034	131,262	149,908	135,754	135,452	131,570	131,954	124,998	121,736
'15 WE	86,380	89,364	94,860	99,782	103,206	128,626	97,626	101,320	100,970	98,960	96,500	96,292
'16 WD	114,062	116,192	120,224	126,388	130,602	134,452	131,064	134,546	130,030	132,034	124,430	120,950
'16 WE	84,510	89,404	95,324	97,062	102,396	106,426	97,820	103,730	104,702	102,336	96,608	84,094
'17 WD	114,452	120,226	123,698	129,848	132,118	136,304	129,454	133,734	128,362	125,988	123,480	117,442
'17 WE	90,004	93,752	98,262	100,788	103,472	105,722	83,538	101,226	97,990	90,222	95,298	92,030
'18 WD	112,286	118,090										
'18 WE	88,288	85,220										

Note: 'Weekday' defined as Monday-Friday, 'Weekend' defined as Saturday-Sunday

Weekday/Weekend Monthly Average Daily Traffic ('14-'18)



	Feb-14	Feb-15	Feb-16	Feb-17	Feb-18
Weekday	112,210	117,646	116,192	120,226	118,090
Weekend	83,444	89,364	89,404	93,752	85,220