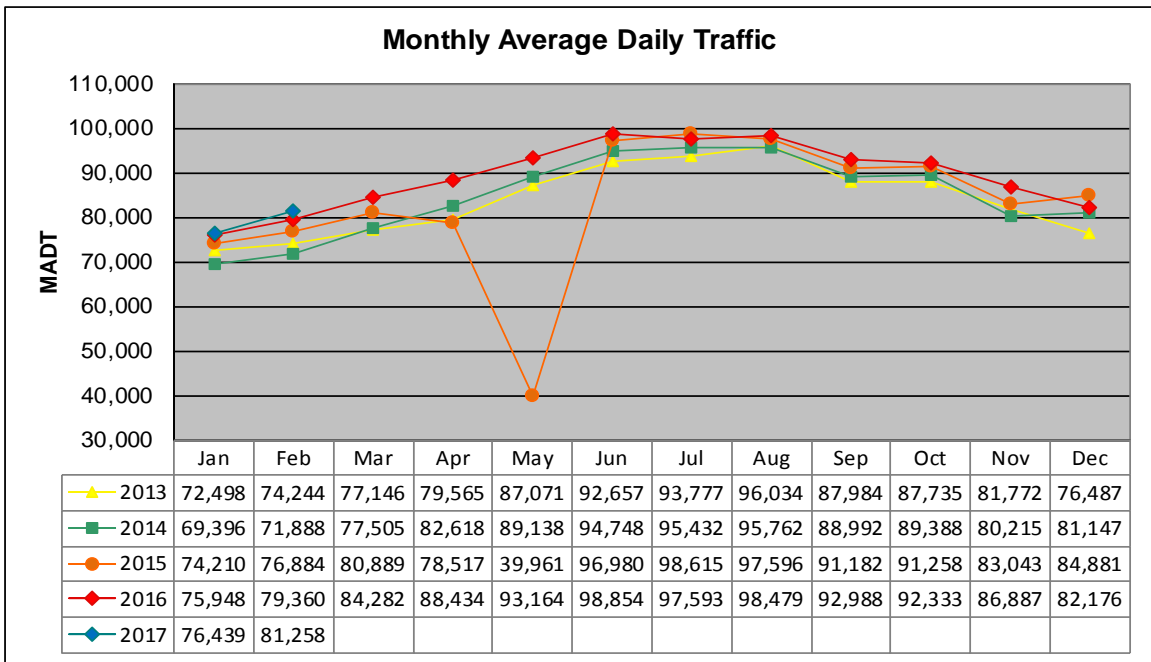


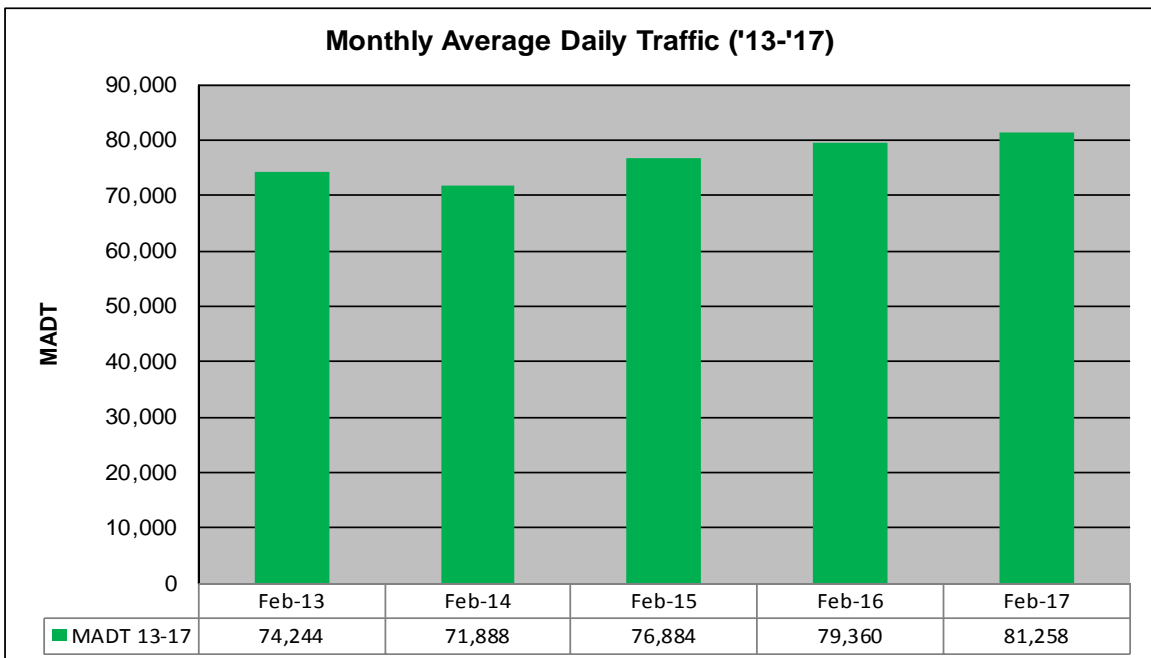
MONTHLY REPORT, STATION NO. 354 (ATR)

FEBRUARY 2017

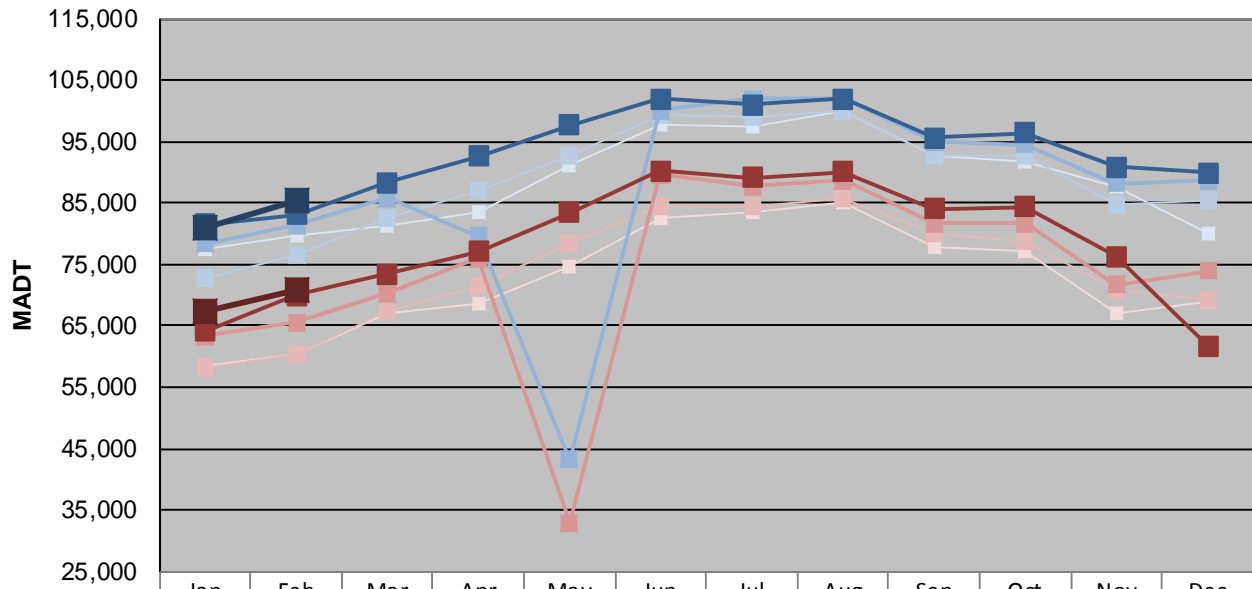
Station Measurement: VOLUME/SPEED/CLASS		
Route: I-94	Route Direction: E/W	Lanes: 6
County: Washington		Closest City: Woodbury
Functional Class: Urban Principal Arterial - Interstate		
Location: W OF MSAS127 (COTTAGE GROVE DR) IN WOODBURY		
Ref Post: 252+00.500	True Mile: 253.096	Sequence No. 9861
Volume: 2,275,219		MADT: 81,258
Weekday (M-F) MADT: 85,406		Weekend (Sa-Su) MADT: 70,886



Note: Decrease in traffic April/May 2015 due to construction on I-94



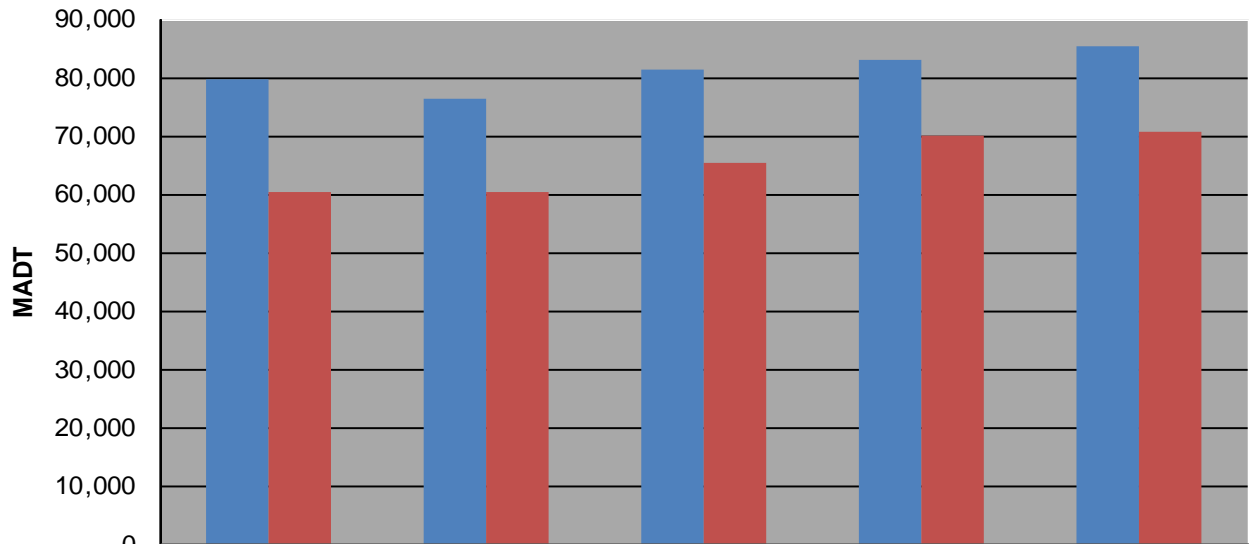
Weekday (WD)/Weekend (WE) Monthly Average Daily Traffic



	Jan	Feb	Mar	Apr	May	Jun	Jul	Aug	Sep	Oct	Nov	Dec
'13 WD	77,628	79,774	81,430	83,608	91,004	97,660	97,428	100,068	92,722	91,792	87,596	80,086
'13 WE	58,414	60,422	66,980	68,692	74,580	82,652	83,390	84,950	77,708	77,064	67,144	69,076
'14 WD	72,822	76,448	82,498	86,864	92,856	99,310	99,032	100,042	92,664	92,694	84,910	85,404
'14 WE	58,254	60,490	67,428	71,594	78,442	84,606	84,616	85,810	79,954	78,740	70,826	69,232
'15 WD	78,308	81,420	85,758	79,664	43,186	100,072	101,982	102,098	94,952	94,546	88,210	88,682
'15 WE	63,302	65,544	70,352	75,944	32,898	89,570	87,714	88,624	81,762	81,662	71,778	73,958
'16 WD	81,550	83,050	88,350	92,662	97,644	101,896	101,036	101,892	95,560	96,370	90,808	89,896
'16 WE	64,120	70,004	73,490	77,154	83,456	90,296	89,202	90,066	84,096	84,382	76,292	61,822
'17 WD	80,872	85,406										
'17 WE	67,342	70,886										

Note: 'Weekday' defined as Monday-Friday, 'Weekend' defined as Saturday-Sunday

Weekday/Weekend Monthly Average Daily Traffic ('13-'17)



	Feb-13	Feb-14	Feb-15	Feb-16	Feb-17
Weekday	79,774	76,448	81,420	83,050	85,406
Weekend	60,422	60,490	65,544	70,004	70,886