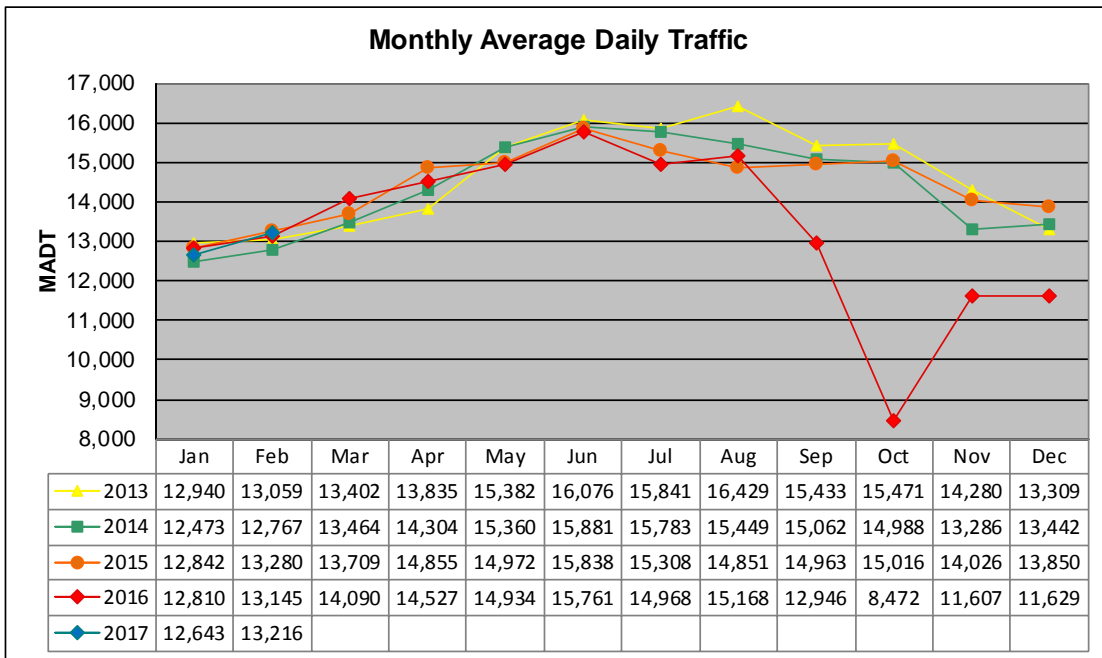


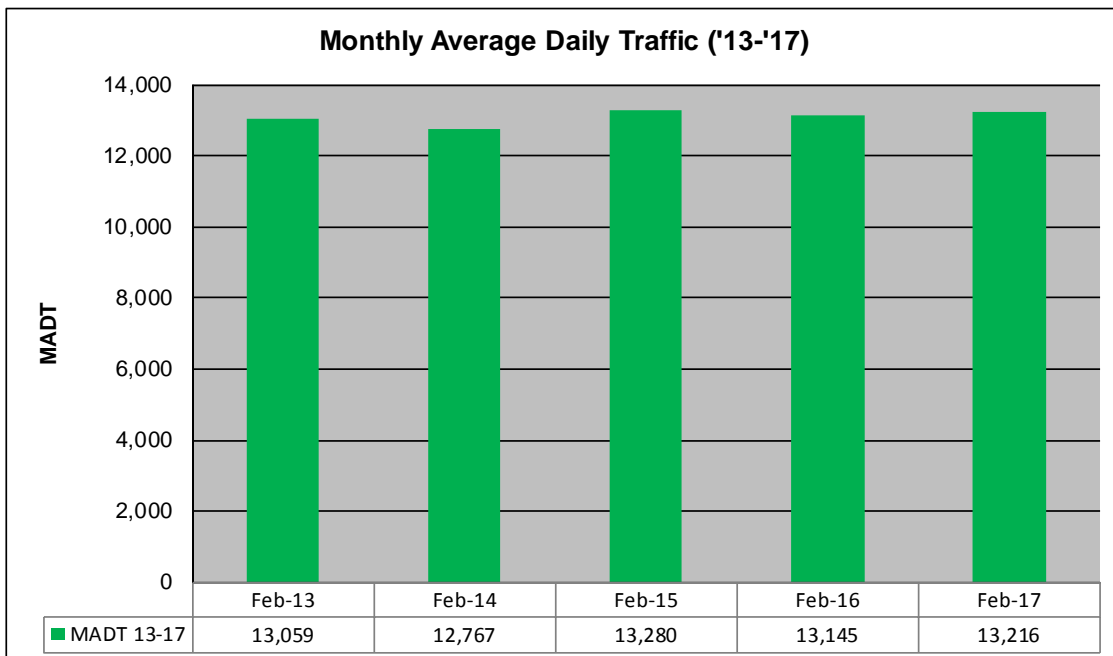
# MONTHLY REPORT, STATION NO. 351 (ATR)

## FEBRUARY 2017

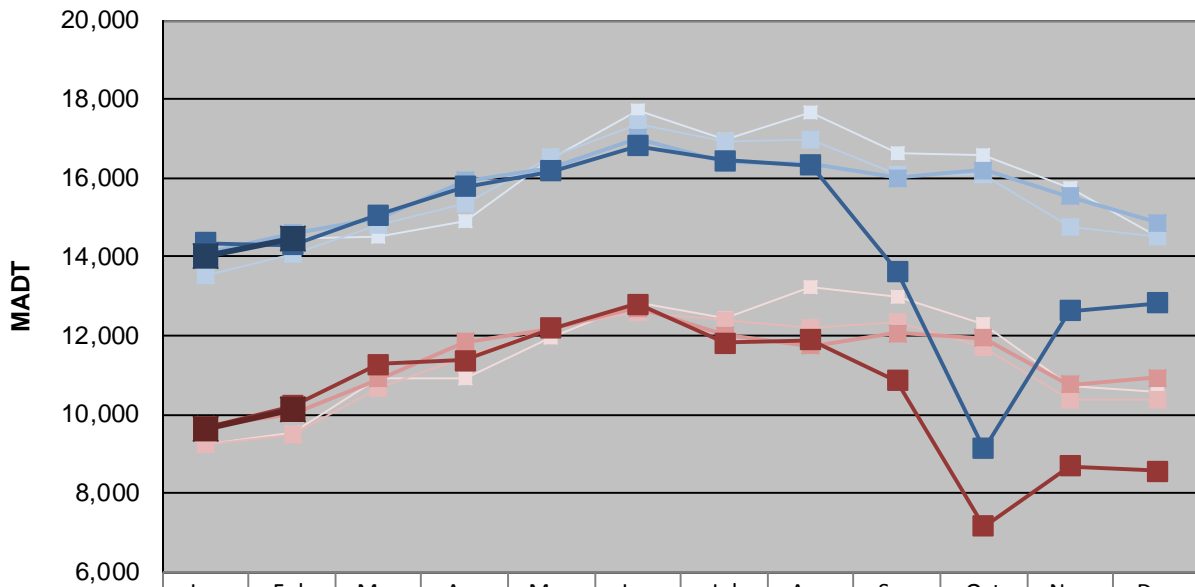
|  |                      |                                     |
|--|----------------------|-------------------------------------|
| Station Measurement: VOLUME                        |                      |                                     |
| Route: TH 12                                       | Route Direction: E/W | Lanes: 2                            |
| County: Hennepin                                   |                      | Closest City: Independence          |
| Functional Class: Rural Principal Arterial - Other |                      |                                     |
| Location: W OF CSAH92 IN INDEPENDENCE              |                      |                                     |
| Ref Post: 142+00.839                               | True Mile: 142.285   | Sequence No. 6789                   |
| <b>Volume: 370,050</b>                             |                      | <b>MADT: 13,216</b>                 |
| <b>Weekday (M-F) MADT: 14,450</b>                  |                      | <b>Weekend (Sa-Su) MADT: 10,134</b> |



Note: Decrease in traffic July to December 2016 due to construction on TH 12



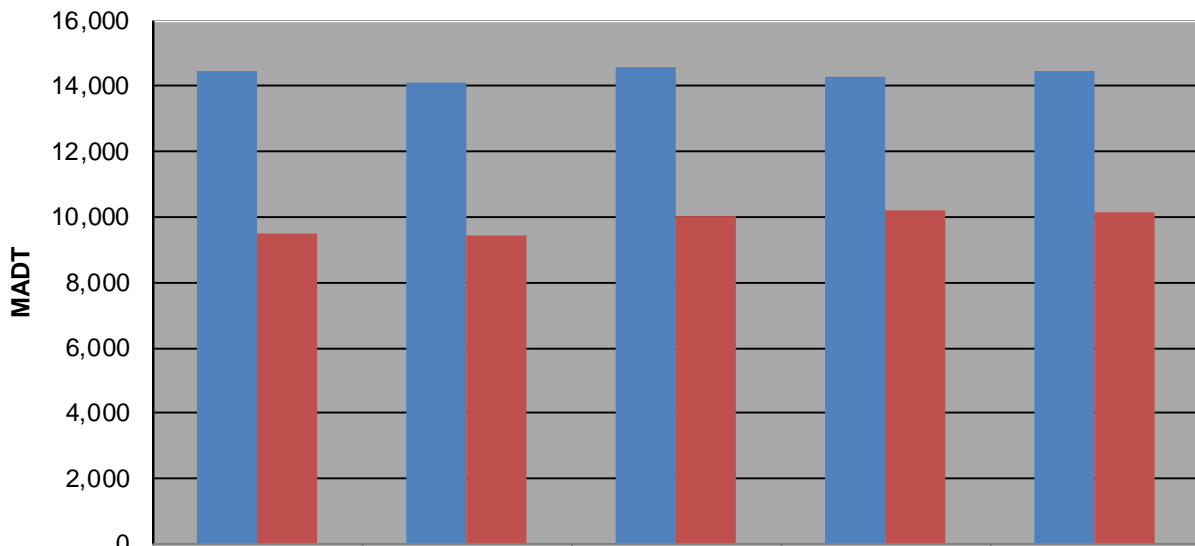
### Weekday (WD)/Weekend (WE) Monthly Average Daily Traffic



|        | Jan    | Feb    | Mar    | Apr    | May    | Jun    | Jul    | Aug    | Sep    | Oct    | Nov    | Dec    |
|--------|--------|--------|--------|--------|--------|--------|--------|--------|--------|--------|--------|--------|
| '13 WD | 14,270 | 14,478 | 14,532 | 14,888 | 16,472 | 17,692 | 16,992 | 17,644 | 16,606 | 16,586 | 15,736 | 14,526 |
| '13 WE | 9,256  | 9,514  | 10,918 | 10,906 | 11,970 | 12,846 | 12,446 | 13,236 | 13,002 | 12,294 | 10,704 | 10,570 |
| '14 WD | 13,532 | 14,088 | 14,826 | 15,334 | 16,550 | 17,358 | 16,922 | 16,980 | 16,108 | 16,086 | 14,746 | 14,522 |
| '14 WE | 9,256  | 9,466  | 10,676 | 11,464 | 12,208 | 12,596 | 12,378 | 12,180 | 12,368 | 11,724 | 10,366 | 10,362 |
| '15 WD | 14,072 | 14,588 | 14,984 | 15,940 | 16,248 | 17,016 | 16,426 | 16,354 | 16,010 | 16,198 | 15,524 | 14,868 |
| '15 WE | 9,720  | 10,010 | 10,892 | 11,840 | 12,184 | 12,692 | 12,006 | 11,742 | 12,062 | 11,926 | 10,744 | 10,918 |
| '16 WD | 14,342 | 14,306 | 15,072 | 15,770 | 16,168 | 16,812 | 16,434 | 16,334 | 13,626 | 9,134  | 12,636 | 12,818 |
| '16 WE | 9,654  | 10,214 | 11,280 | 11,382 | 12,172 | 12,808 | 11,814 | 11,890 | 10,848 | 7,154  | 8,682  | 8,558  |
| '17 WD | 14,010 | 14,450 |        |        |        |        |        |        |        |        |        |        |
| '17 WE | 9,636  | 10,134 |        |        |        |        |        |        |        |        |        |        |

Note: 'Weekday' defined as Monday-Friday, 'Weekend' defined as Saturday-Sunday

### Weekday/Weekend Monthly Average Daily Traffic ('13-'17)



|         | Feb-13 | Feb-14 | Feb-15 | Feb-16 | Feb-17 |
|---------|--------|--------|--------|--------|--------|
| Weekday | 14,478 | 14,088 | 14,588 | 14,306 | 14,450 |
| Weekend | 9,514  | 9,466  | 10,010 | 10,214 | 10,134 |