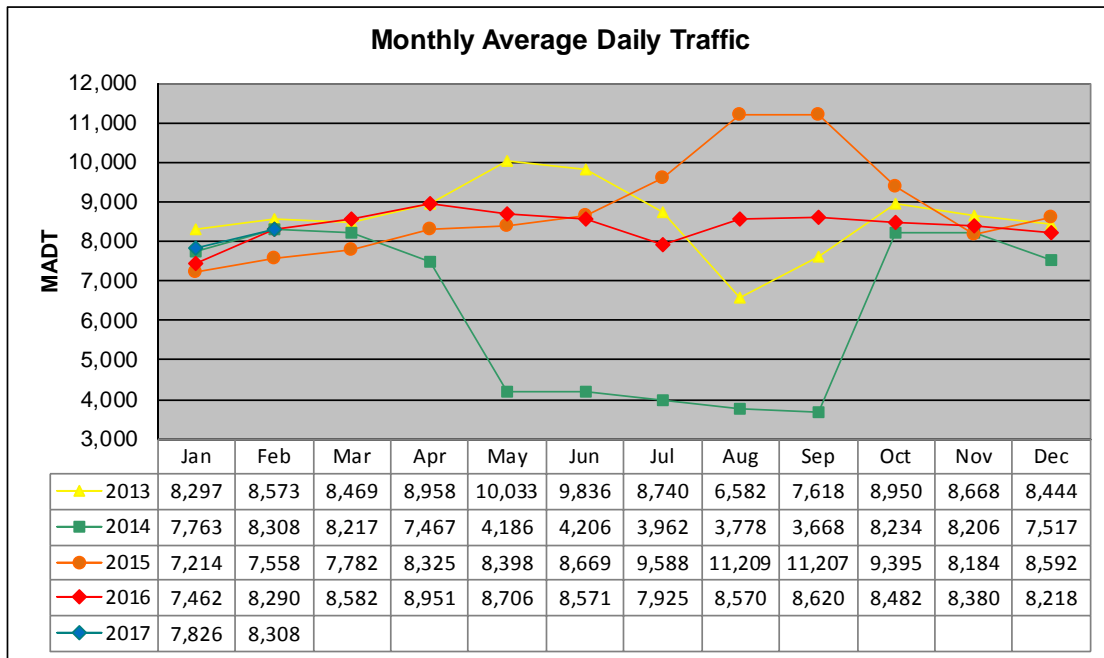


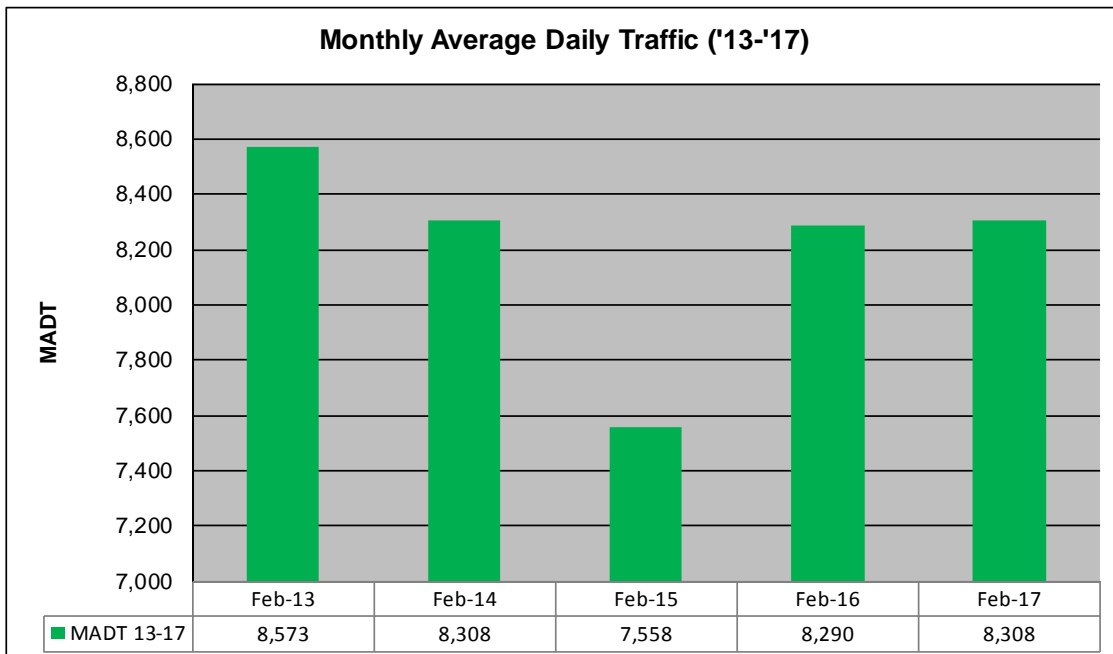
MONTHLY REPORT, STATION NO. 28 (ATR)

FEBRUARY 2017

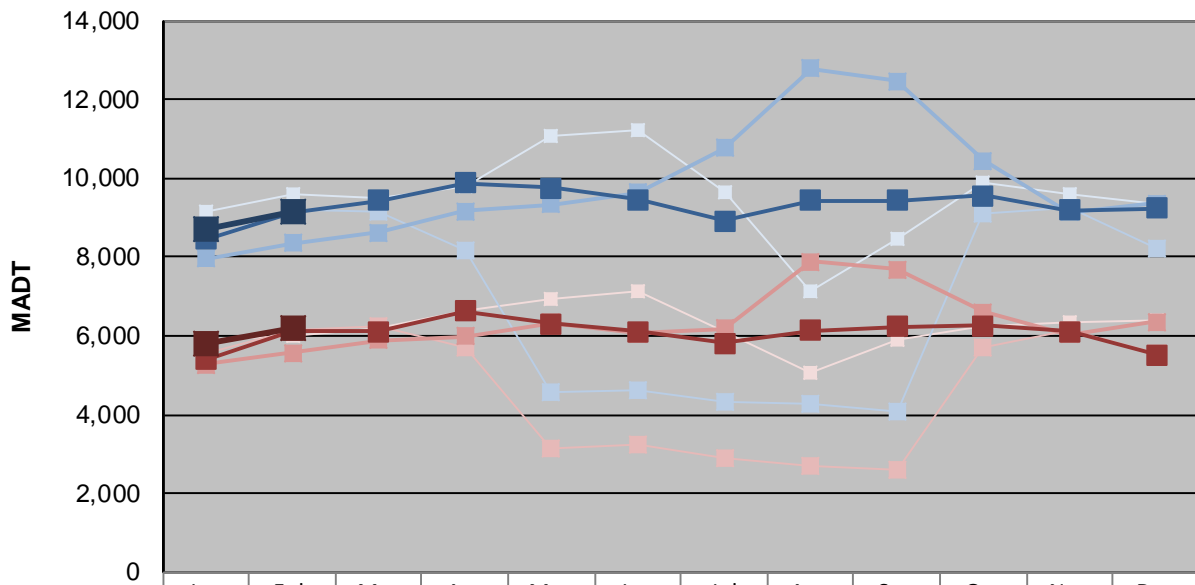
| | | |
|---|------------------------|------------------------------------|
| Station Measurement: VOLUME/SPEED/CLASS | | |
| Route: MSAS 114 | Route Direction: E/W | Lanes: 2 |
| County: Stearns | Closest City: St Cloud | |
| Functional Class: Urban Minor Arterial | | |
| Location: W OF 20TH AVE N IN ST CLOUD | | |
| Ref Post: 000+00.750 | True Mile: 0.75 | Sequence No. 22993 |
| Volume: 232,624 | | MADT: 8,308 |
| Weekday (M-F) MADT: 9,158 | | Weekend (Sa-Su) MADT: 6,186 |



Note: Decrease in traffic August/September 2013 and April to September 2014 due to construction on TH 15



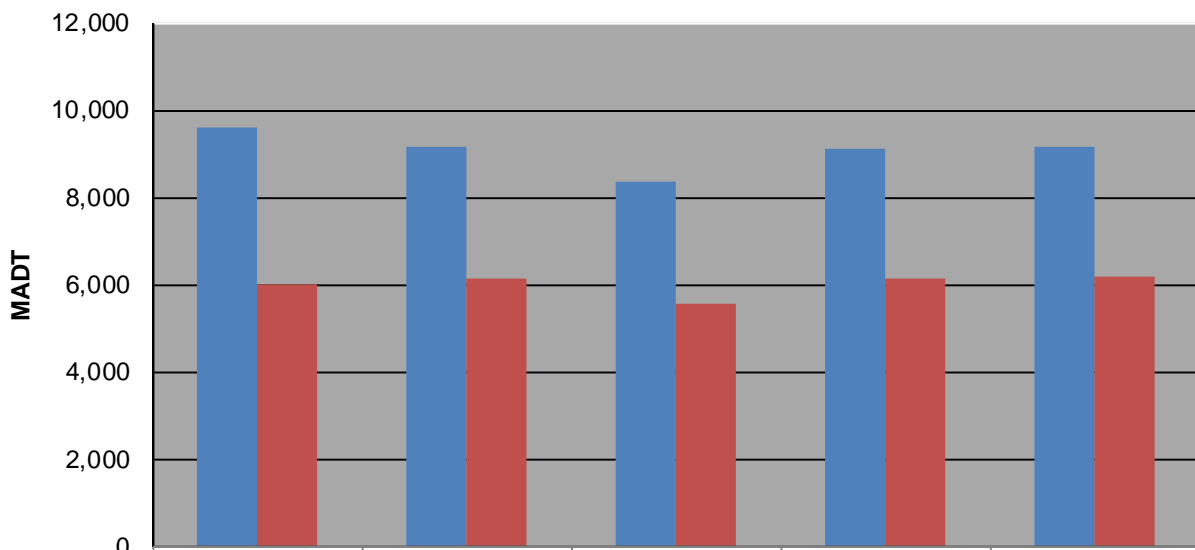
Weekday (WD)/Weekend (WE) Monthly Average Daily Traffic



| | Jan | Feb | Mar | Apr | May | Jun | Jul | Aug | Sep | Oct | Nov | Dec |
|--------|-------|-------|-------|-------|--------|--------|--------|--------|--------|--------|-------|-------|
| '13 WD | 9,146 | 9,598 | 9,512 | 9,808 | 11,064 | 11,200 | 9,636 | 7,132 | 8,440 | 9,896 | 9,592 | 9,344 |
| '13 WE | 5,890 | 6,010 | 6,196 | 6,634 | 6,912 | 7,110 | 6,094 | 5,060 | 5,914 | 6,244 | 6,324 | 6,392 |
| '14 WD | 8,452 | 9,182 | 9,162 | 8,150 | 4,564 | 4,636 | 4,340 | 4,288 | 4,064 | 9,080 | 9,230 | 8,200 |
| '14 WE | 5,576 | 6,126 | 6,246 | 5,704 | 3,156 | 3,224 | 2,874 | 2,688 | 2,594 | 5,728 | 6,158 | 5,542 |
| '15 WD | 7,960 | 8,352 | 8,616 | 9,166 | 9,340 | 9,632 | 10,754 | 12,792 | 12,474 | 10,450 | 9,142 | 9,354 |
| '15 WE | 5,274 | 5,574 | 5,890 | 5,998 | 6,338 | 6,064 | 6,172 | 7,894 | 7,676 | 6,602 | 6,032 | 6,366 |
| '16 WD | 8,456 | 9,134 | 9,444 | 9,868 | 9,758 | 9,448 | 8,906 | 9,436 | 9,442 | 9,558 | 9,184 | 9,234 |
| '16 WE | 5,392 | 6,128 | 6,100 | 6,632 | 6,314 | 6,122 | 5,810 | 6,124 | 6,226 | 6,248 | 6,100 | 5,508 |
| '17 WD | 8,732 | 9,158 | | | | | | | | | | |
| '17 WE | 5,812 | 6,186 | | | | | | | | | | |

Note: 'Weekday' defined as Monday-Friday, 'Weekend' defined as Saturday-Sunday

Weekday/Weekend Monthly Average Daily Traffic ('13-'17)



| | Feb-13 | Feb-14 | Feb-15 | Feb-16 | Feb-17 |
|---------|--------|--------|--------|--------|--------|
| Weekday | 9,598 | 9,182 | 8,352 | 9,134 | 9,158 |
| Weekend | 6,010 | 6,126 | 5,574 | 6,128 | 6,186 |