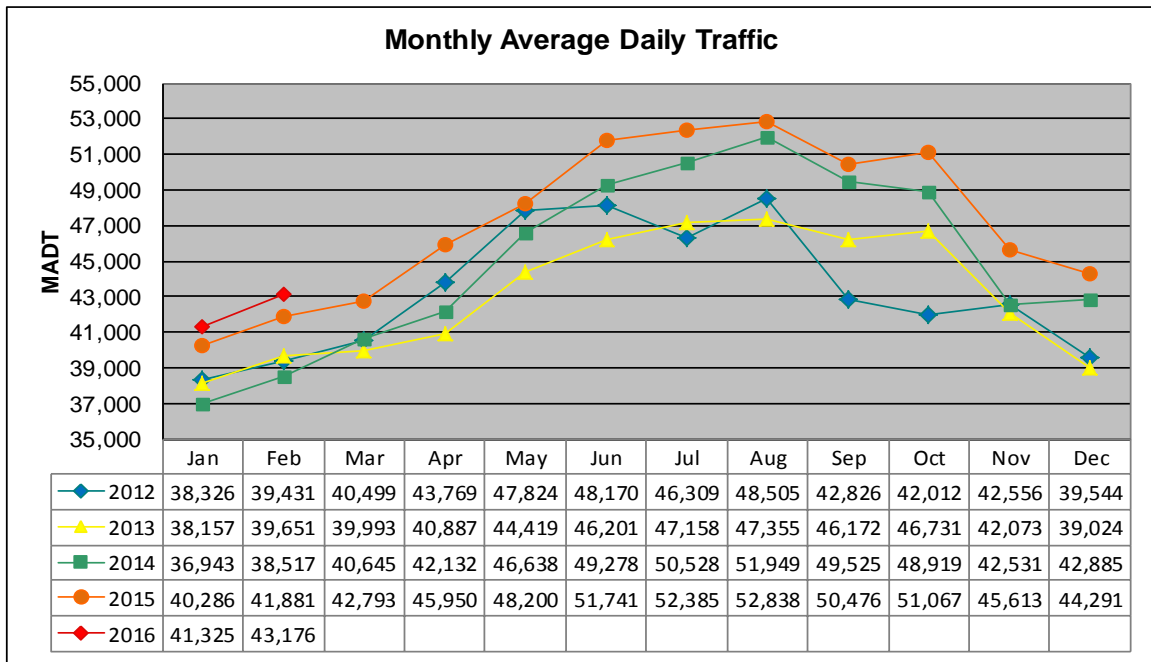


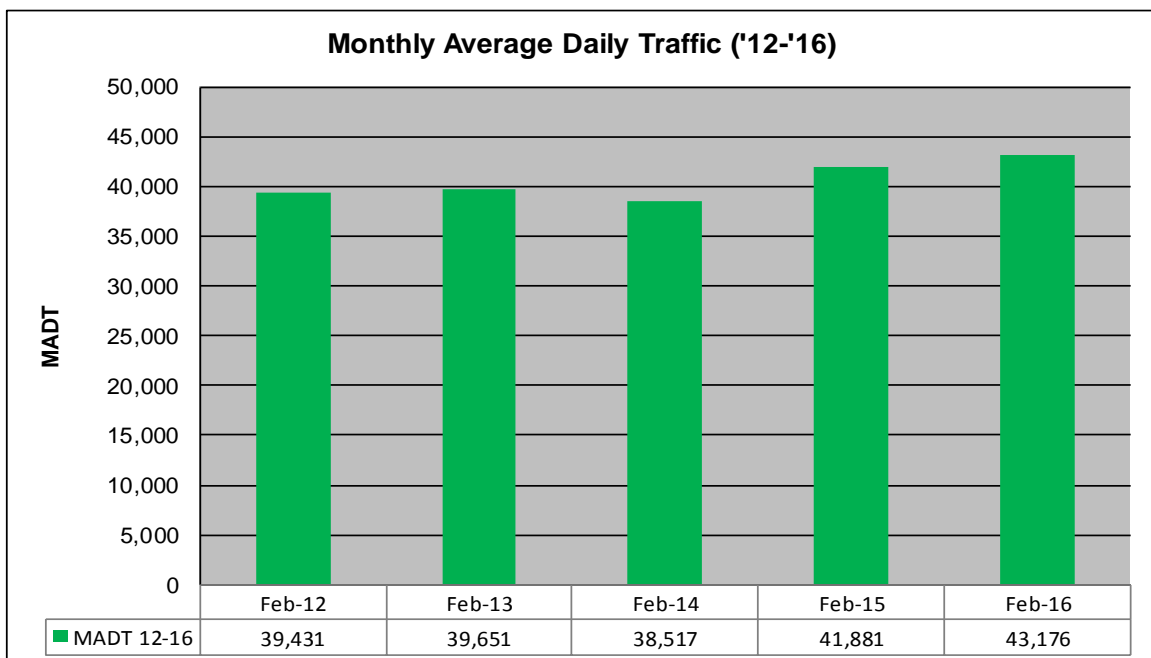
MONTHLY REPORT, STATION NO. 335 (ATR)

FEBRUARY 2016

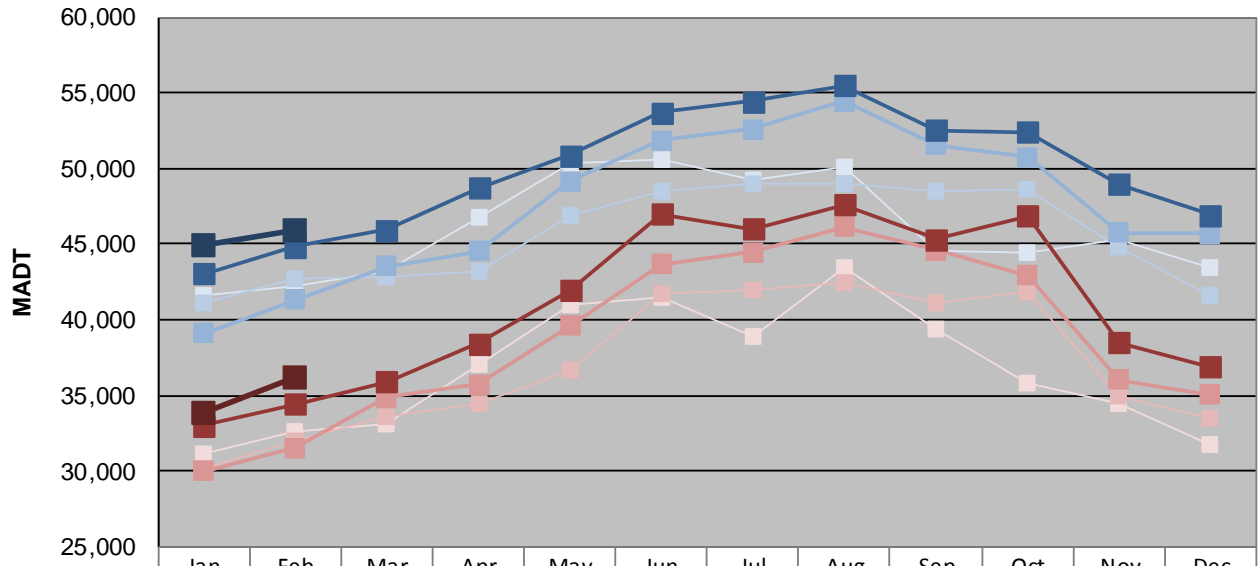
Station Measurement: VOLUME/SPEED/CLASS		
Route: I-35W	Route Direction: N/S	Lanes: 4
County: Anoka		Closest City: Blaine
Functional Class: Urban Principal Arterial - Interstate		
Location: W OF CR53 (SUNSET AVE NE) IN BLAINE		
Ref Post: 033+00.752	True Mile: 33.787	Sequence No. 9853
Volume: 1,252,091		MADT: 43,176
Weekday (M-F) MADT: 45,910		Weekend (Sa-Su) MADT: 36,178



Note: Decrease in traffic October 2012 due to construction on I-35W and TH 62



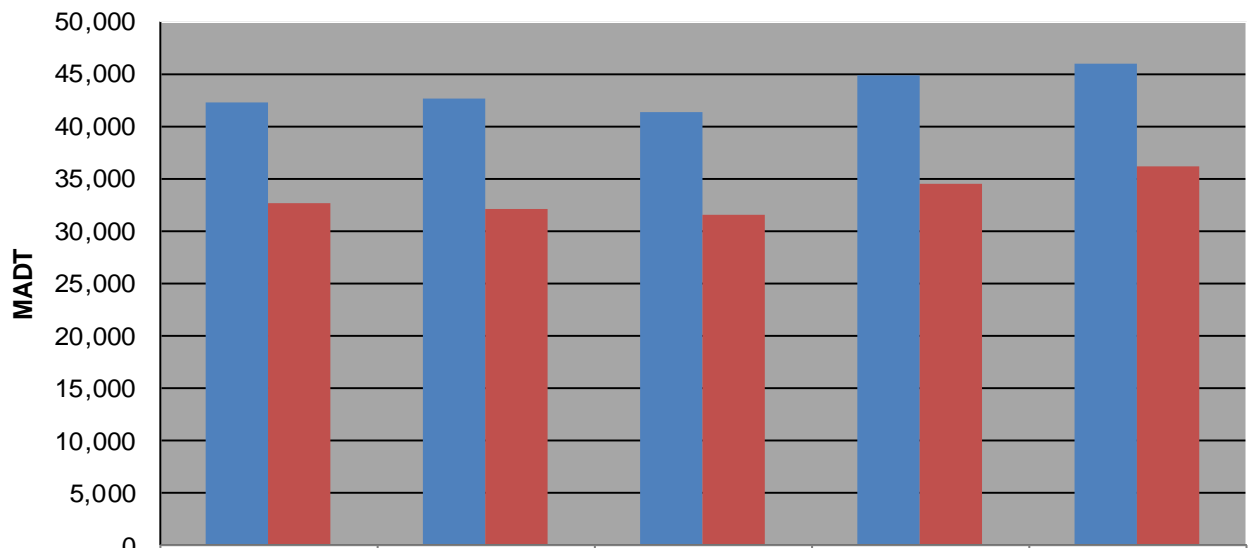
Weekday (WD)/Weekend (WE) Monthly Average Daily Traffic



	Jan	Feb	Mar	Apr	May	Jun	Jul	Aug	Sep	Oct	Nov	Dec
'12 WD	41,650	42,196	43,180	46,824	50,354	50,638	49,214	50,038	44,576	44,386	45,328	43,490
'12 WE	31,082	32,666	33,148	37,014	40,944	41,520	38,910	43,454	39,328	35,802	34,428	31,736
'13 WD	41,090	42,696	42,792	43,256	46,858	48,438	49,044	49,018	48,526	48,602	44,754	41,570
'13 WE	30,130	32,038	33,592	34,436	36,678	41,728	41,966	42,420	41,162	41,876	34,910	33,486
'14 WD	39,104	41,316	43,512	44,520	49,118	51,830	52,588	54,452	51,564	50,764	45,774	45,710
'14 WE	30,002	31,520	34,846	35,708	39,576	43,670	44,476	46,102	44,570	42,950	36,044	35,060
'15 WD	43,050	44,852	45,928	48,702	50,888	53,700	54,424	55,498	52,520	52,408	48,954	46,934
'15 WE	33,012	34,450	35,906	38,414	41,924	46,988	45,994	47,578	45,306	46,878	38,506	36,894
'16 WD	44,872	45,910										
'16 WE	33,790	36,178										

Note: 'Weekday' defined as Monday-Friday, 'Weekend' defined as Saturday-Sunday

Weekday/Weekend Monthly Average Daily Traffic ('12-'16)



	Feb-12	Feb-13	Feb-14	Feb-15	Feb-16
Weekday	42,196	42,696	41,316	44,852	45,910
Weekend	32,666	32,038	31,520	34,450	36,178