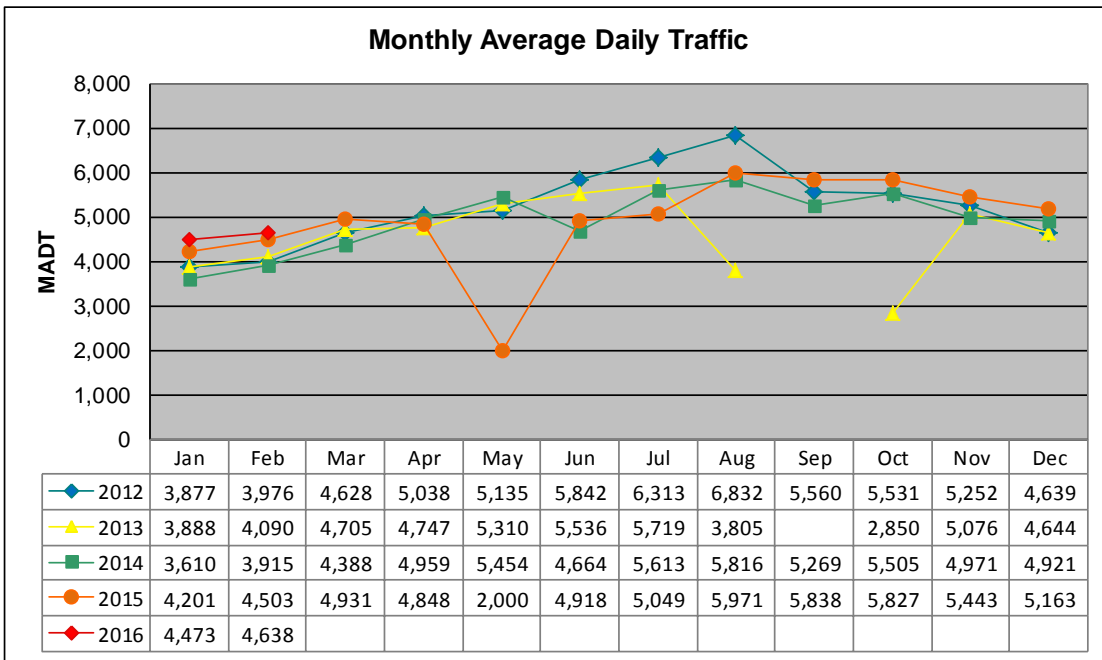


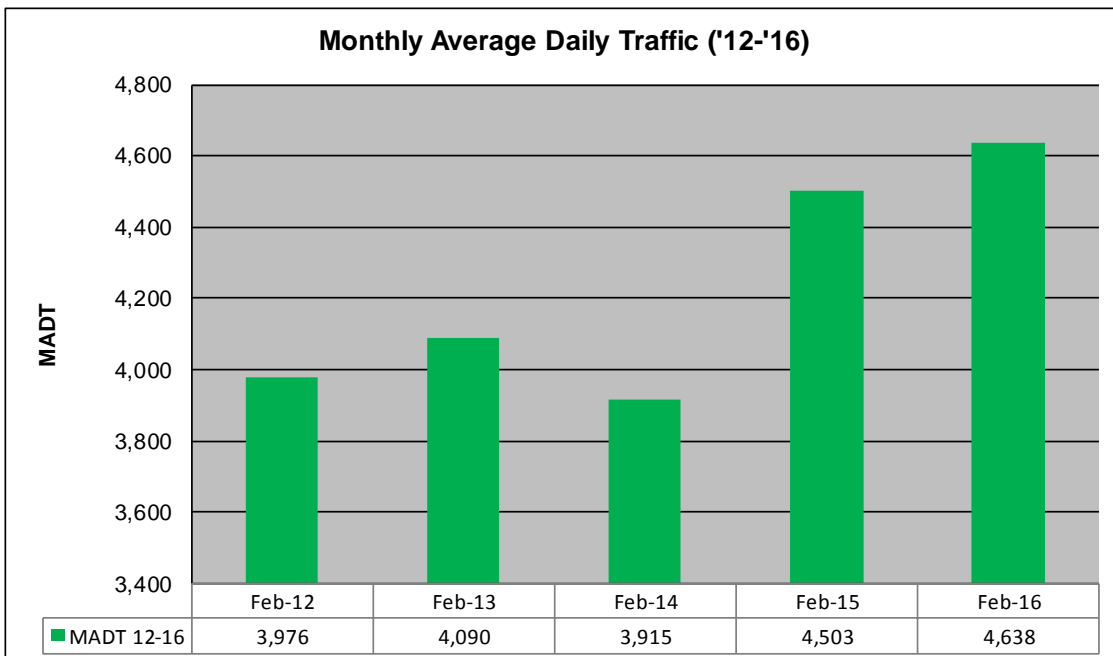
# MONTHLY REPORT, STATION NO. 27 (WIM)

## FEBRUARY 2016

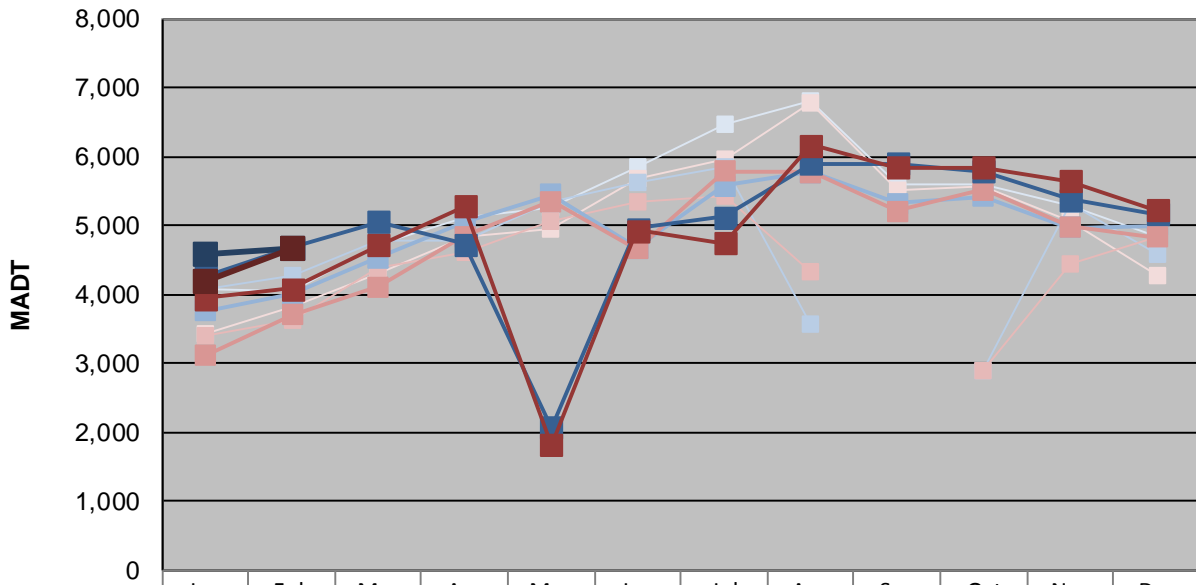
Station Measurement: VOLUME/SPEED/CLASS/WEIGHT		
Route: TH 60	Route Direction: E/W	Lanes: 4
County: Watonwan	Closest City: St James	
Functional Class: Rural Principal Arterial - Other		
Location: .7 MI W OF W JCT OF TH4, SW OF ST JAMES		
Ref Post: 064+00.850	True Mile: 64.929	Sequence No. 9830
<b>Volume: 134,508</b>		<b>MADT: 4,638</b>
<b>Weekday (M-F) MADT: 4,656</b>		<b>Weekend (Sa-Su) MADT: 4,662</b>



Note: No data September 2013; road closed for reconstruction... Decrease in traffic August/October 2013, June/July 2014, and May to July 2015 due to construction on TH 60... Volume data reported as ATR 197 from 2012-2014



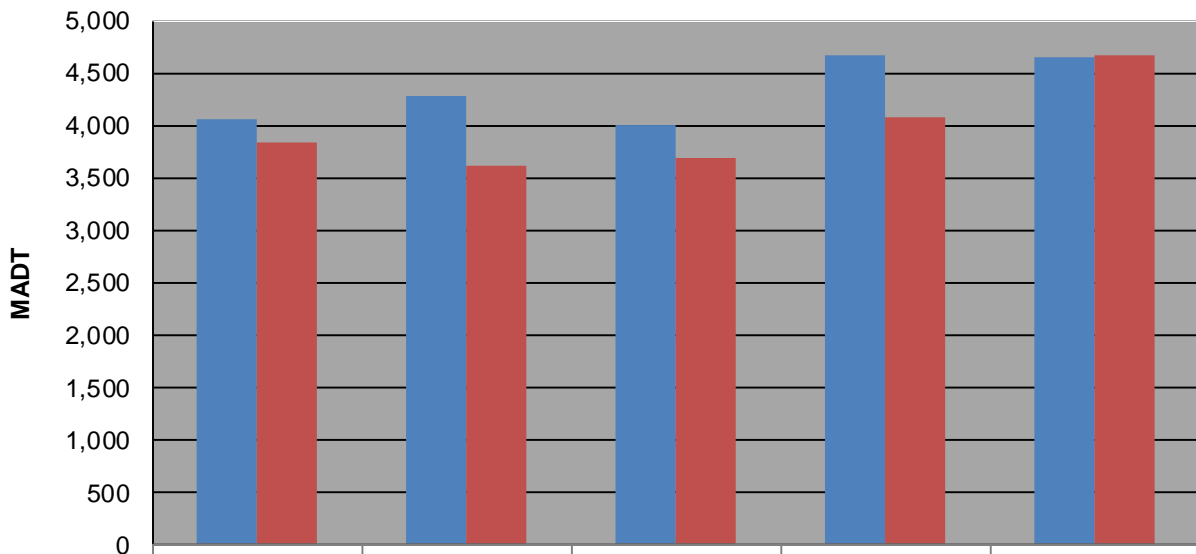
### Weekday (WD)/Weekend (WE) Monthly Average Daily Traffic



	Jan	Feb	Mar	Apr	May	Jun	Jul	Aug	Sep	Oct	Nov	Dec
'12 WD	4,076	4,050	4,720	5,120	5,252	5,860	6,464	6,808	5,586	5,596	5,288	4,844
'12 WE	3,420	3,828	4,300	4,832	4,948	5,690	5,952	6,780	5,512	5,564	5,048	4,284
'13 WD	4,080	4,280	4,790	4,792	5,354	5,626	5,840	3,560		2,882	5,314	4,592
'13 WE	3,412	3,614	4,396	4,624	5,064	5,356	5,436	4,336		2,884	4,430	4,832
'14 WD	3,752	4,002	4,530	5,040	5,444	4,668	5,570	5,766	5,316	5,426	4,968	4,994
'14 WE	3,116	3,696	4,110	4,840	5,352	4,660	5,792	5,772	5,212	5,516	4,978	4,822
'15 WD	4,268	4,670	5,058	4,728	2,070	4,958	5,120	5,896	5,900	5,786	5,384	5,164
'15 WE	3,948	4,084	4,722	5,272	1,822	4,926	4,740	6,168	5,838	5,836	5,640	5,226
'16 WD	4,588	4,656										
'16 WE	4,180	4,662										

Note: 'Weekday' defined as Monday-Friday, 'Weekend' defined as Saturday-Sunday

### Weekday/Weekend Monthly Average Daily Traffic ('12-'16)



	Feb-12	Feb-13	Feb-14	Feb-15	Feb-16
Weekday	4,050	4,280	4,002	4,670	4,656
Weekend	3,828	3,614	3,696	4,084	4,662