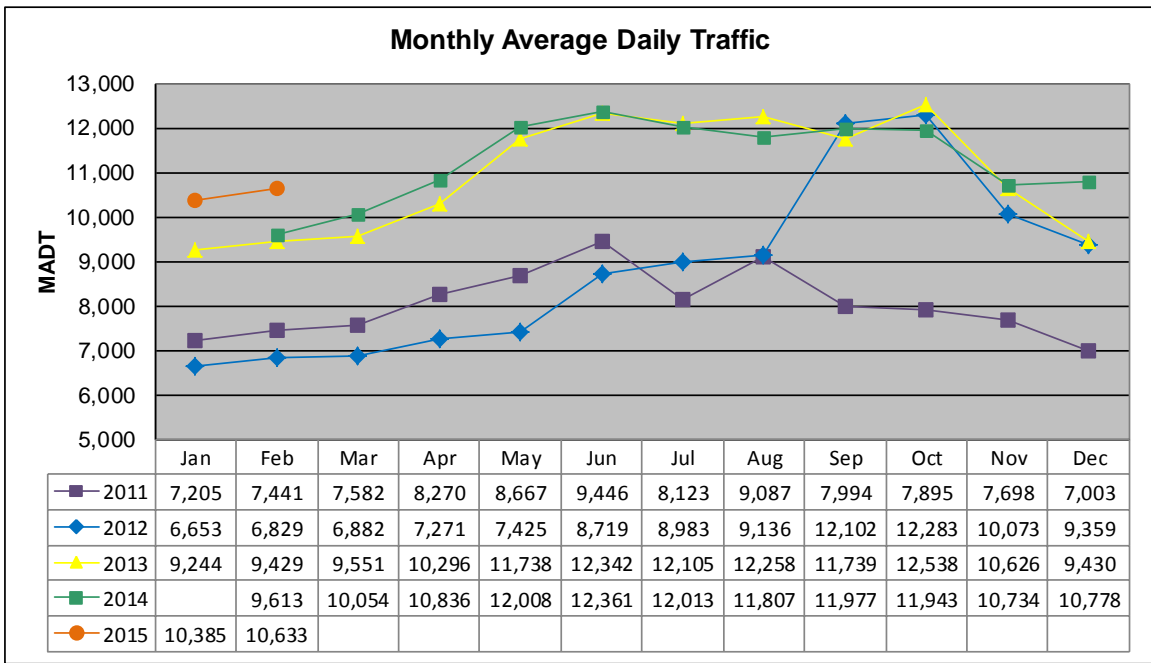


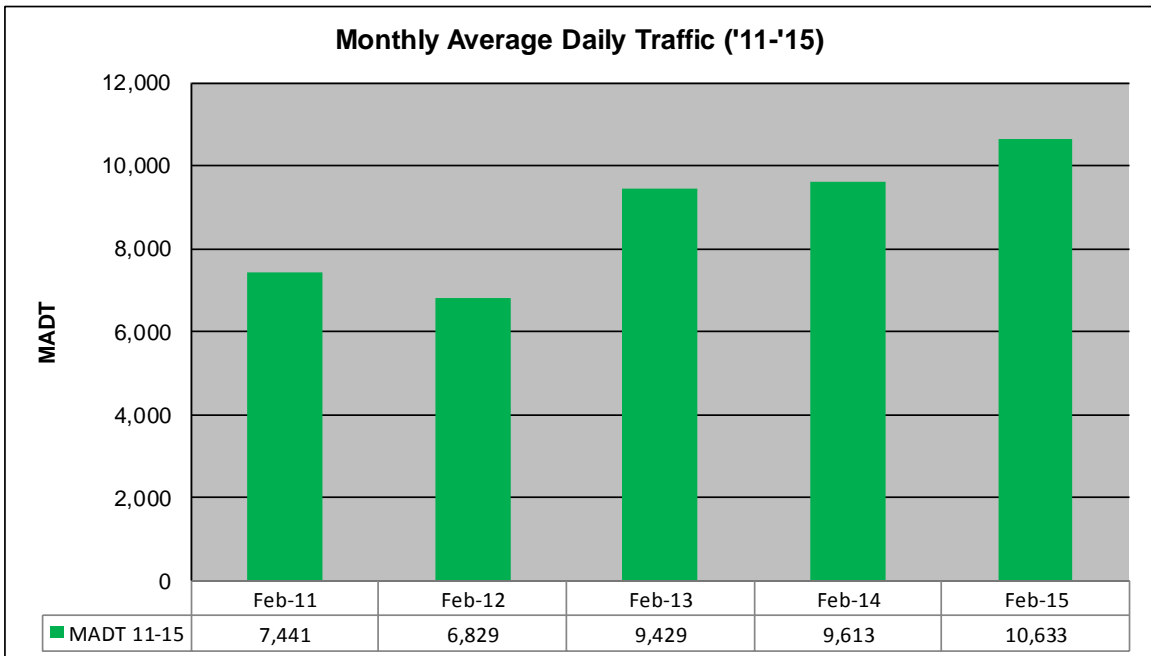
# MONTHLY REPORT, STATION NO. 45 (WIM)

## FEBRUARY 2015

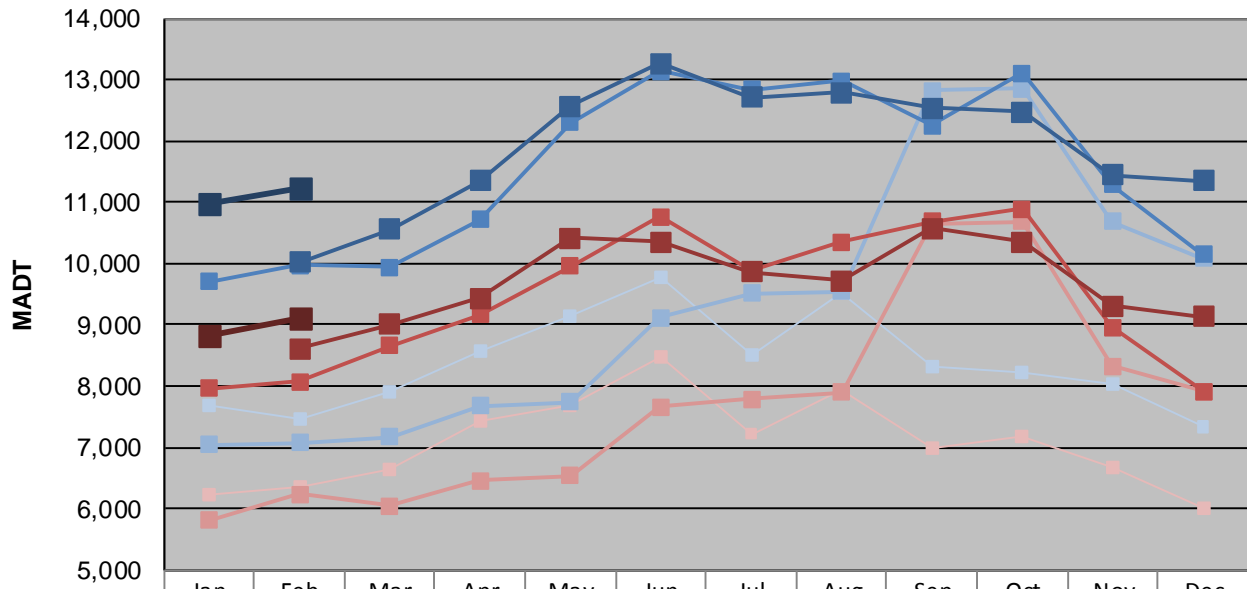
|  |                      |                                    |
|--|----------------------|------------------------------------|
| Station Measurement: VOLUME/SPEED/CLASS/WEIGHT           |                      |                                    |
| Route: CSAH 14   | Route Direction: E/W | Lanes: 2                           |
| County: Anoka  | Closest City: Blaine |                                    |
| Functional Class: Urban Other Principal Arterial         |                      |                                    |
| Location: .7 MI W OF CSAH17 (LEXINGTON AVE NE) IN BLAINE |                      |                                    |
| Ref Post: 010+00.100                                     | True Mile: 10.1      | Sequence No. 9893                  |
| <b>Volume: 297,734</b>                                   |                      | <b>MADT: 10,633</b>                |
| <b>Weekday (M-F) MADT: 9,116</b>                         |                      | <b>Weekend (Sa-Su) MADT: 9,116</b> |



Note: Volume data reported as ATR 422 from 2011-2013... Decrease in traffic April/May 2012 due to construction... Increase in traffic beginning September 2012 due to a new turn lane... No data January 2014 due to site issues



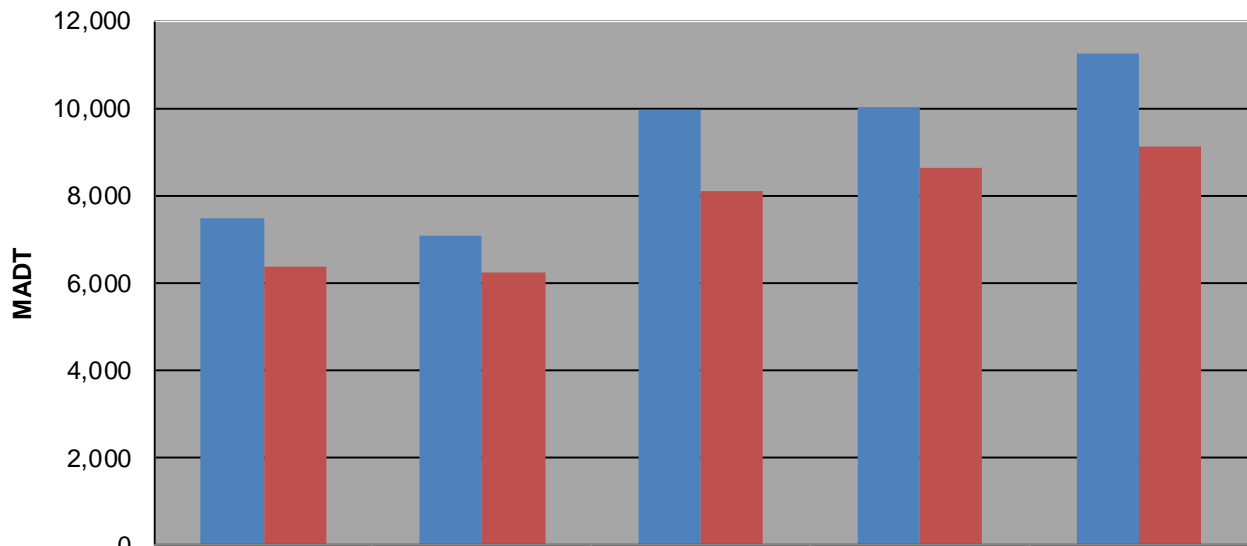
**Weekday (WD)/Weekend (WE) Monthly Average Daily Traffic**



|        | Jan    | Feb    | Mar    | Apr    | May    | Jun    | Jul    | Aug    | Sep    | Oct    | Nov    | Dec    |
|--------|--------|--------|--------|--------|--------|--------|--------|--------|--------|--------|--------|--------|
| '11 WD | 7,670  | 7,474  | 7,910  | 8,566  | 9,128  | 9,778  | 8,522  | 9,520  | 8,308  | 8,226  | 8,046  | 7,338  |
| '11 WE | 6,234  | 6,366  | 6,656  | 7,434  | 7,678  | 8,478  | 7,216  | 7,940  | 6,986  | 7,192  | 6,658  | 6,014  |
| '12 WD | 7,042  | 7,072  | 7,174  | 7,672  | 7,744  | 9,114  | 9,508  | 9,542  | 12,828 | 12,862 | 10,690 | 10,082 |
| '12 WE | 5,810  | 6,234  | 6,040  | 6,454  | 6,536  | 7,668  | 7,790  | 7,900  | 10,648 | 10,686 | 8,320  | 7,908  |
| '13 WD | 9,708  | 9,970  | 9,940  | 10,716 | 12,308 | 13,132 | 12,832 | 12,986 | 12,260 | 13,110 | 11,294 | 10,152 |
| '13 WE | 7,966  | 8,080  | 8,666  | 9,166  | 9,950  | 10,762 | 9,880  | 10,352 | 10,678 | 10,892 | 8,954  | 7,908  |
| '14 WD |        | 10,014 | 10,566 | 11,346 | 12,570 | 13,270 | 12,710 | 12,786 | 12,538 | 12,468 | 11,452 | 11,352 |
| '14 WE |        | 8,614  | 9,008  | 9,434  | 10,410 | 10,356 | 9,862  | 9,724  | 10,576 | 10,356 | 9,302  | 9,128  |
| '15 WD | 10,972 | 11,240 |        |        |        |        |        |        |        |        |        |        |
| '15 WE | 8,836  | 9,116  |        |        |        |        |        |        |        |        |        |        |

Note: 'Weekday' defined as Monday-Friday, 'Weekend' defined as Saturday-Sunday

**Weekday/Weekend Monthly Average Daily Traffic ('11-'15)**



|         | Feb-11 | Feb-12 | Feb-13 | Feb-14 | Feb-15 |
|---------|--------|--------|--------|--------|--------|
| Weekday | 7,474  | 7,072  | 9,970  | 10,014 | 11,240 |
| Weekend | 6,366  | 6,234  | 8,080  | 8,614  | 9,116  |