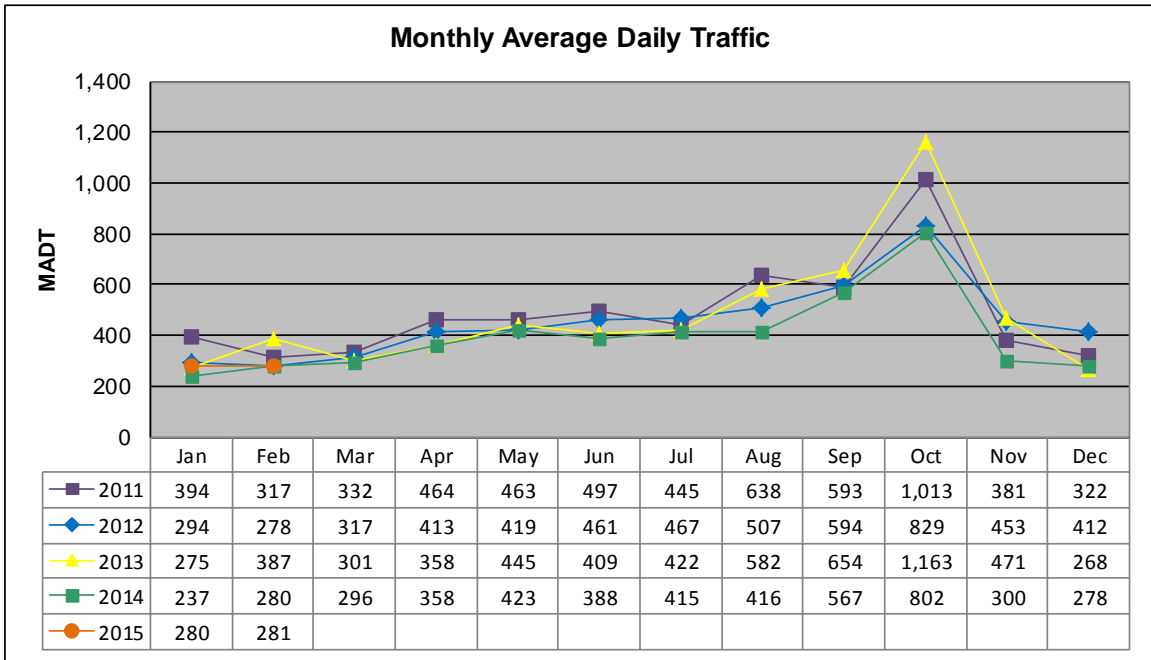


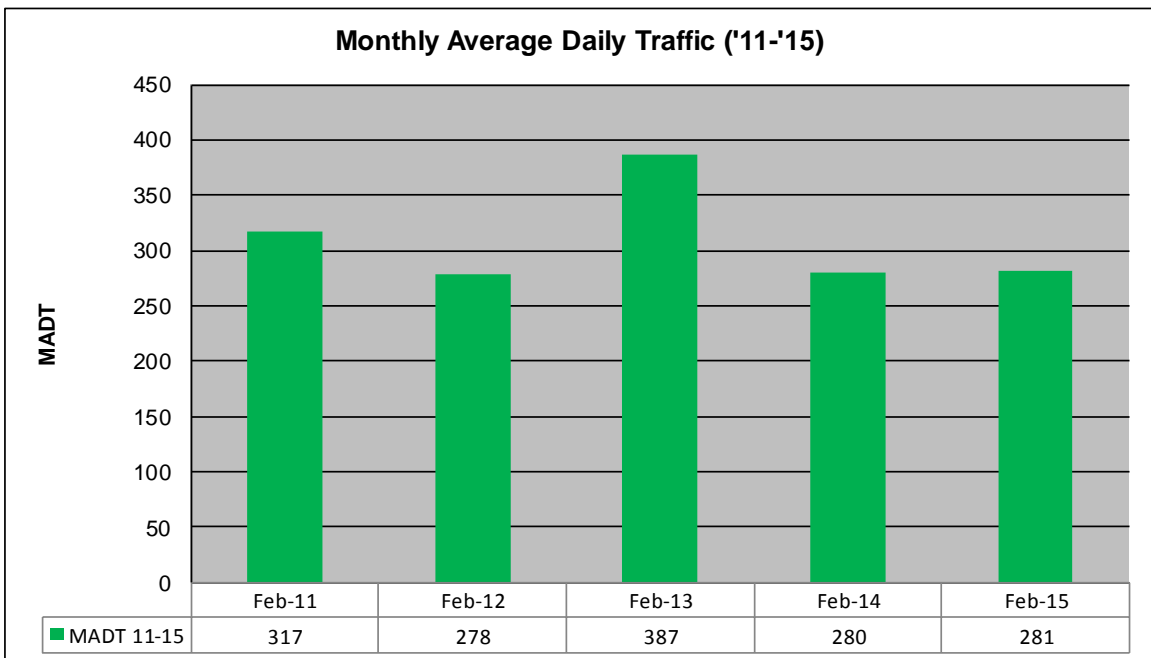
MONTHLY REPORT, STATION NO. 41 (WIM)

FEBRUARY 2015

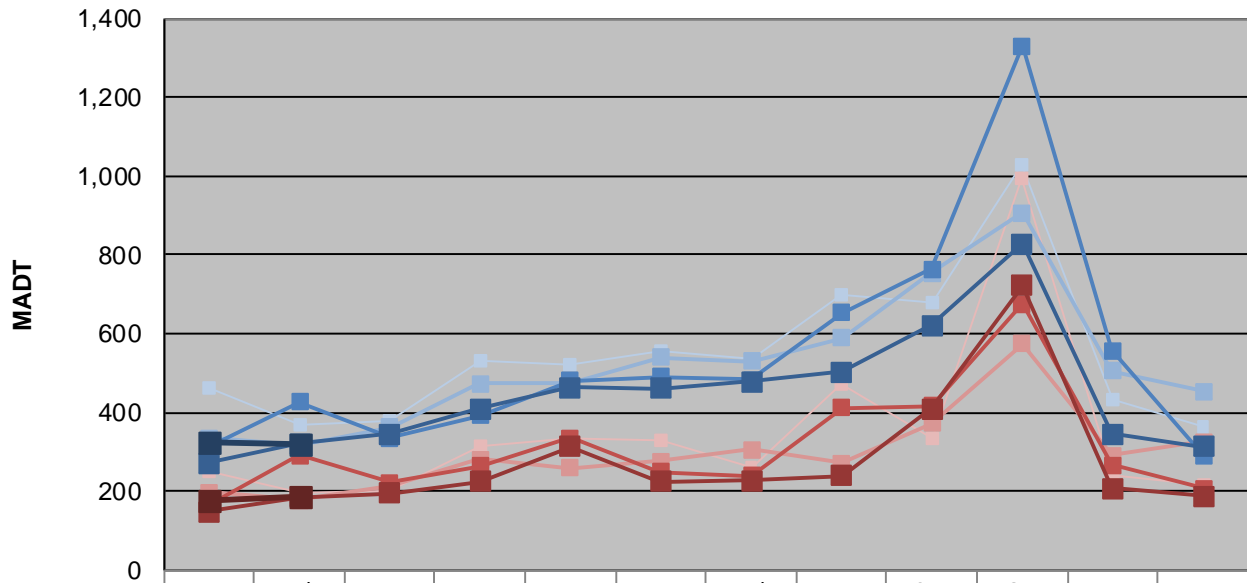
| | | |
|--|-------------------------|----------------------------------|
| Station Measurement: VOLUME/SPEED/CLASS/WEIGHT | | |
| Route: CSAH 14 | Route Direction: N/S | Lanes: 2 |
| County: Polk | Closest City: Crookston | |
| Functional Class: Rural Major Collector | | |
| Location: 1.3 MI N OF CSAH45, S OF CROOKSTON | | |
| Ref Post: 014+00.850 | True Mile: 14.85 | Sequence No. 9817 |
| Volume: 7,862 | | MADT: 281 |
| Weekday (M-F) MADT: 320 | | Weekend (Sa-Su) MADT: 184 |



Note: Increase in traffic during Octobers due to beet harvesting



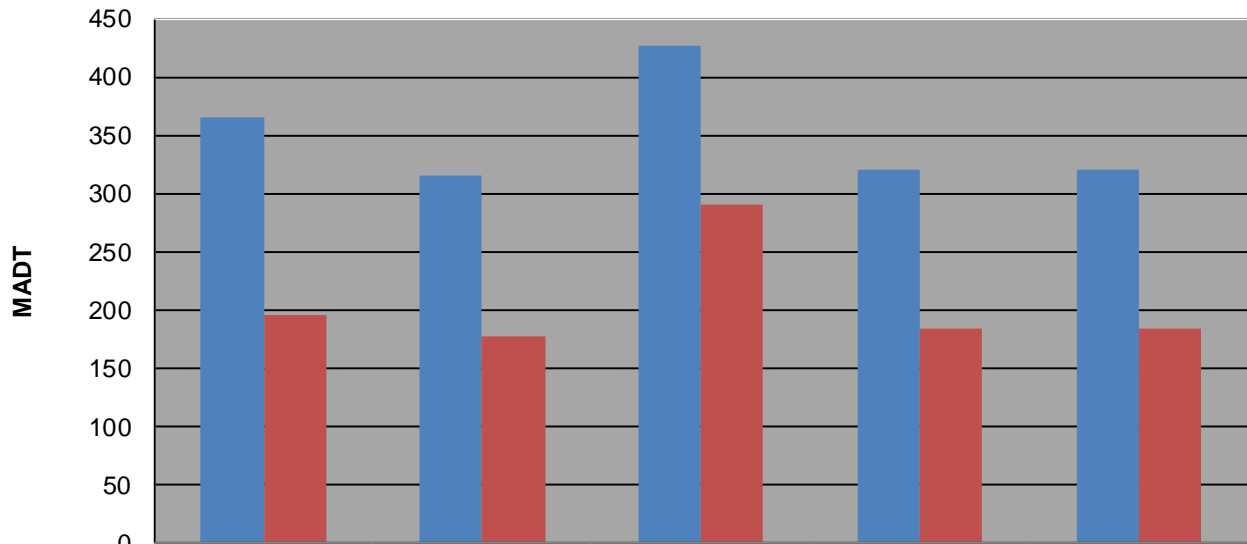
Weekday (WD)/Weekend (WE) Monthly Average Daily Traffic



| | Jan | Feb | Mar | Apr | May | Jun | Jul | Aug | Sep | Oct | Nov | Dec |
|--------|-----|-----|-----|-----|-----|-----|-----|-----|-----|-------|-----|-----|
| '11 WD | 464 | 366 | 378 | 530 | 520 | 558 | 534 | 698 | 680 | 1,030 | 432 | 364 |
| '11 WE | 252 | 196 | 200 | 312 | 332 | 328 | 260 | 474 | 332 | 992 | 240 | 216 |
| '12 WD | 334 | 316 | 362 | 474 | 472 | 540 | 530 | 588 | 754 | 906 | 506 | 454 |
| '12 WE | 198 | 178 | 212 | 280 | 260 | 276 | 306 | 270 | 372 | 574 | 292 | 326 |
| '13 WD | 312 | 426 | 336 | 392 | 480 | 490 | 482 | 652 | 764 | 1,330 | 558 | 292 |
| '13 WE | 166 | 290 | 222 | 264 | 334 | 250 | 238 | 412 | 416 | 674 | 266 | 208 |
| '14 WD | 270 | 320 | 346 | 408 | 464 | 460 | 478 | 502 | 622 | 828 | 346 | 312 |
| '14 WE | 148 | 184 | 196 | 224 | 314 | 224 | 228 | 238 | 408 | 722 | 208 | 188 |
| '15 WD | 326 | 320 | | | | | | | | | | |
| '15 WE | 178 | 184 | | | | | | | | | | |

Note: 'Weekday' defined as Monday-Friday, 'Weekend' defined as Saturday-Sunday

Weekday/Weekend Monthly Average Daily Traffic ('11-'15)



| | Feb-11 | Feb-12 | Feb-13 | Feb-14 | Feb-15 |
|---------|--------|--------|--------|--------|--------|
| Weekday | 366 | 316 | 426 | 320 | 320 |
| Weekend | 196 | 178 | 290 | 184 | 184 |