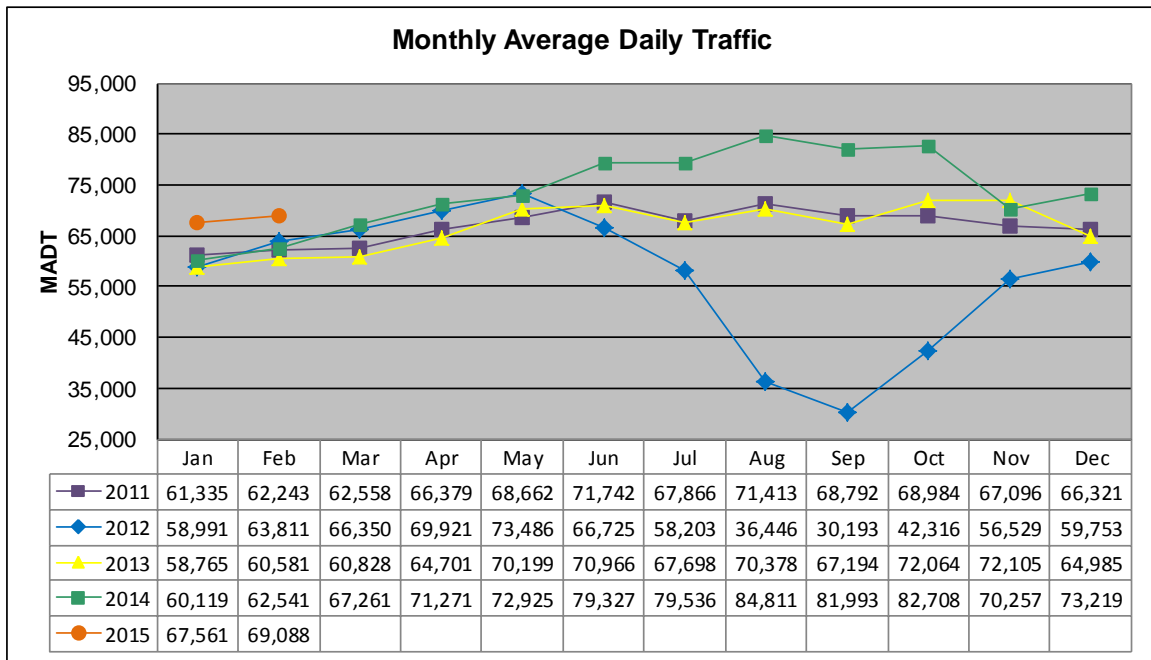


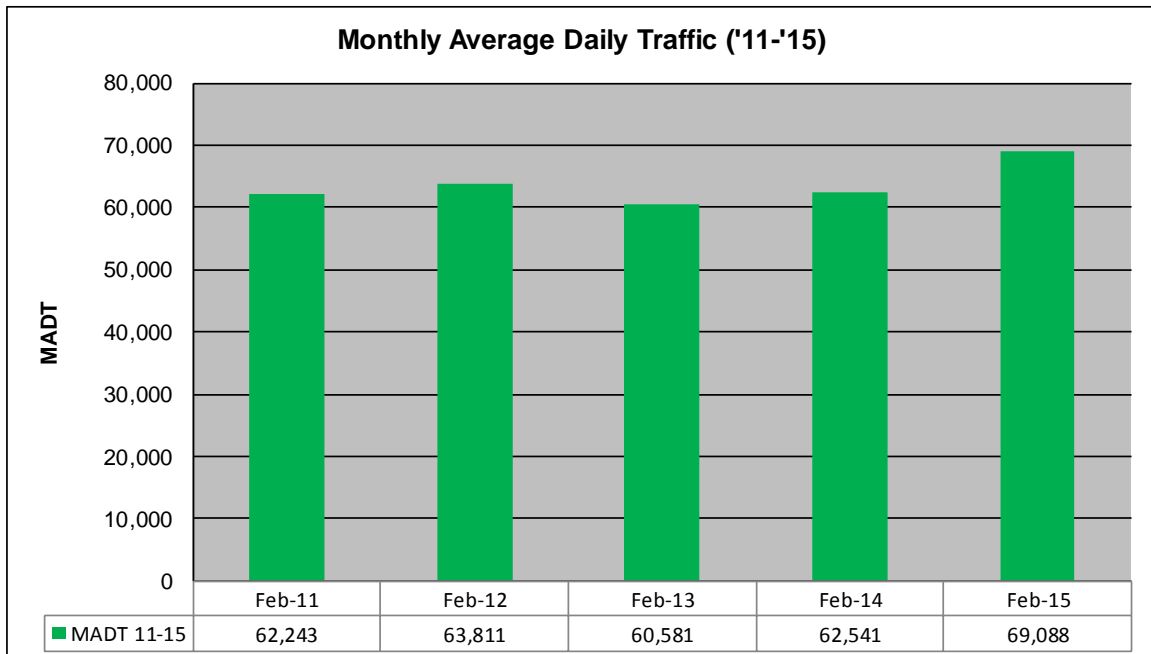
MONTHLY REPORT, STATION NO. 341 (ATR)

FEBRUARY 2015

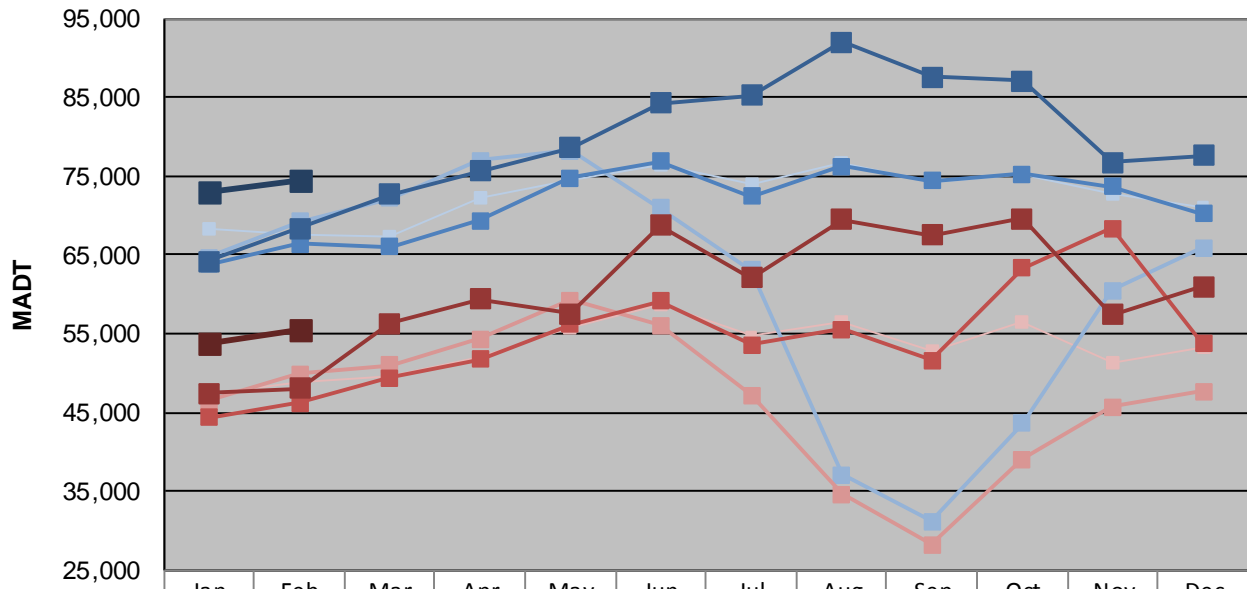
Station Measurement: VOLUME/SPEED/CLASS		
Route: I-694	Route Direction: N/S	Lanes: 4
County: Washington		Closest City: Oakdale
Functional Class: Urban Principal Arterial - Interstate		
Location: S OF CSAH35 (50TH ST N) IN OAKDALE		
Ref Post: 053+00.290	True Mile: 53.237	Sequence No. 9858
Volume: 1,934,452		MADT: 69,088
Weekday (M-F) MADT: 74,556		Weekend (Sa-Su) MADT: 55,416



Note: Decrease in traffic April to October 2010 and June to November 2012 due to construction on I-694... Increase in traffic November 2013 and June to October 2014 due to detour from TH 36



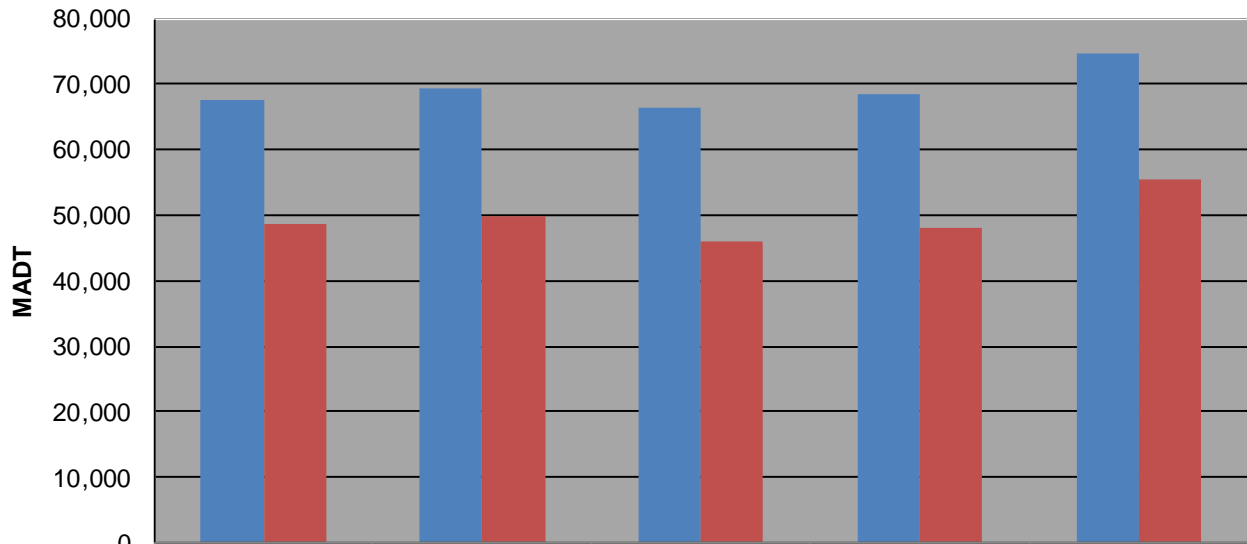
Weekday (WD)/Weekend (WE) Monthly Average Daily Traffic



	Jan	Feb	Mar	Apr	May	Jun	Jul	Aug	Sep	Oct	Nov	Dec
'11 WD	68,226	67,630	67,244	72,222	74,524	76,404	74,018	76,750	74,258	75,110	72,714	71,110
'11 WE	47,436	48,750	49,506	52,124	55,692	58,600	54,632	56,486	52,718	56,484	51,200	53,274
'12 WD	64,720	69,226	72,212	76,948	78,236	70,970	63,038	37,082	31,172	43,600	60,534	65,866
'12 WE	46,454	49,880	50,964	54,296	59,280	56,046	47,126	34,640	28,238	39,106	45,740	47,664
'13 WD	63,860	66,354	66,070	69,398	74,746	76,882	72,436	76,284	74,412	75,250	73,664	70,182
'13 WE	44,382	46,146	49,352	51,722	56,156	59,138	53,582	55,562	51,668	63,272	68,408	53,720
'14 WD	64,214	68,354	72,636	75,598	78,628	84,274	85,226	92,014	87,620	87,094	76,676	77,582
'14 WE	47,458	48,006	56,300	59,390	57,494	68,692	62,098	69,502	67,518	69,556	57,420	60,972
'15 WD	73,020	74,556										
'15 WE	53,832	55,416										

Note: 'Weekday' defined as Monday-Friday, 'Weekend' defined as Saturday-Sunday

Weekday/Weekend Monthly Average Daily Traffic ('11-'15)



	Feb-11	Feb-12	Feb-13	Feb-14	Feb-15
Weekday	67,630	69,226	66,354	68,354	74,556
Weekend	48,750	49,880	46,146	48,006	55,416