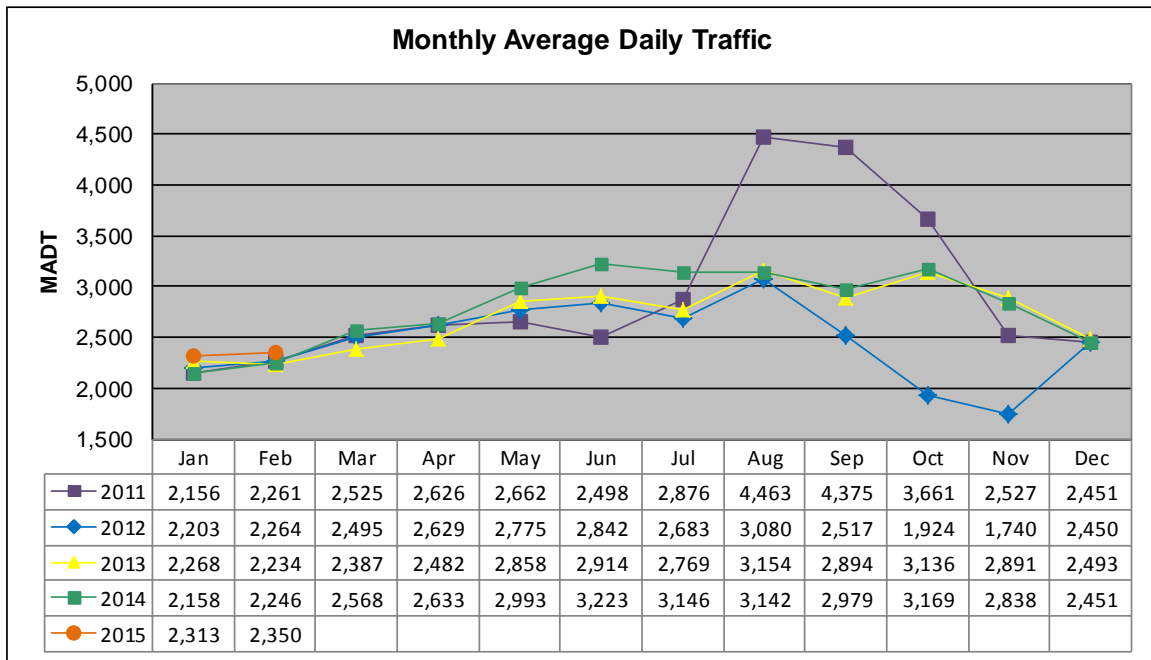


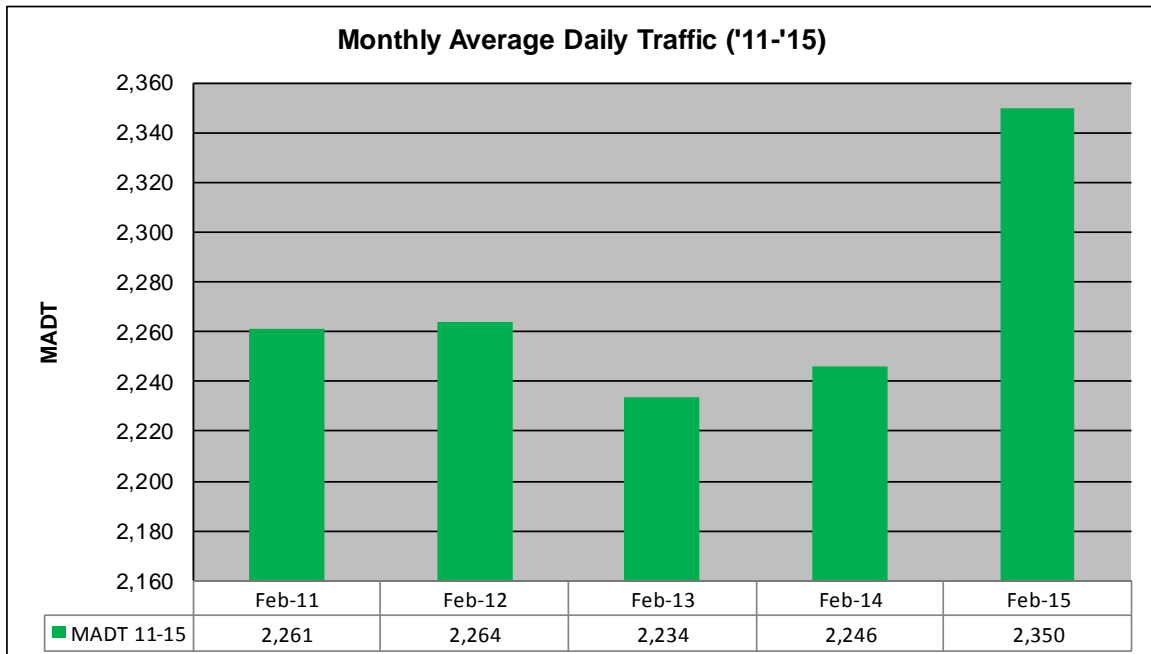
MONTHLY REPORT, STATION NO. 198 (ATR)

FEBRUARY 2015

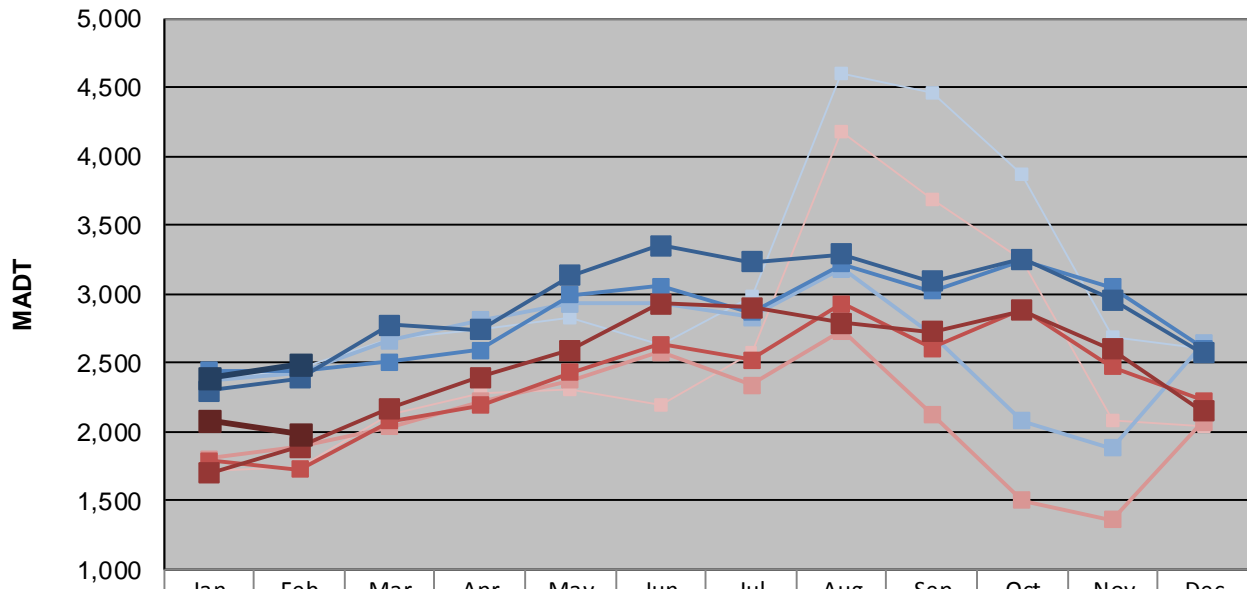
| | | |
|--|-----------------------------|------------------------------------|
| Station Measurement: VOLUME/SPEED/CLASS | | |
| Route: TH 212 | Route Direction: E/W | Lanes: 2 |
| County: Renville | Closest City: Granite Falls | |
| Functional Class: Rural Principal Arterial - Other | | |
| Location: E OF TH23, E OF GRANITE FALLS | | |
| Ref Post: 052+00.356 | True Mile: 52.936 | Sequence No. 9831 |
| Volume: 65,786 | | MADT: 2,350 |
| Weekday (M-F) MADT: 2,496 | | Weekend (Sa-Su) MADT: 1,984 |



Note: Decrease in traffic June 2011 and September to November 2012 due to construction on TH 212... Increase in traffic August to October 2011 due to TH 67 detour



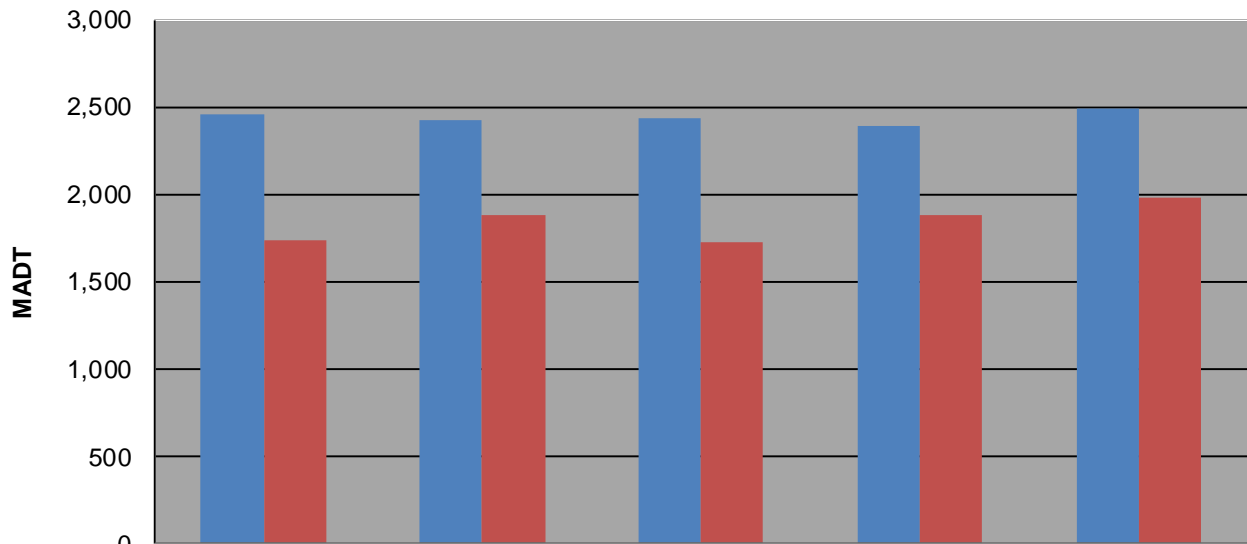
Weekday (WD)/Weekend (WE) Monthly Average Daily Traffic



| | Jan | Feb | Mar | Apr | May | Jun | Jul | Aug | Sep | Oct | Nov | Dec |
|--------|-------|-------|-------|-------|-------|-------|-------|-------|-------|-------|-------|-------|
| '11 WD | 2,366 | 2,460 | 2,666 | 2,748 | 2,822 | 2,624 | 2,984 | 4,600 | 4,458 | 3,862 | 2,684 | 2,598 |
| '11 WE | 1,720 | 1,738 | 2,128 | 2,280 | 2,300 | 2,200 | 2,580 | 4,174 | 3,684 | 3,252 | 2,076 | 2,042 |
| '12 WD | 2,374 | 2,422 | 2,664 | 2,806 | 2,928 | 2,936 | 2,832 | 3,180 | 2,712 | 2,076 | 1,878 | 2,638 |
| '12 WE | 1,804 | 1,884 | 2,038 | 2,220 | 2,370 | 2,580 | 2,340 | 2,732 | 2,124 | 1,502 | 1,360 | 2,072 |
| '13 WD | 2,446 | 2,436 | 2,510 | 2,590 | 2,990 | 3,054 | 2,864 | 3,218 | 3,022 | 3,242 | 3,046 | 2,606 |
| '13 WE | 1,786 | 1,728 | 2,076 | 2,192 | 2,428 | 2,634 | 2,520 | 2,932 | 2,606 | 2,884 | 2,474 | 2,224 |
| '14 WD | 2,298 | 2,390 | 2,772 | 2,736 | 3,132 | 3,354 | 3,234 | 3,290 | 3,088 | 3,254 | 2,958 | 2,572 |
| '14 WE | 1,698 | 1,884 | 2,168 | 2,394 | 2,590 | 2,930 | 2,902 | 2,786 | 2,722 | 2,876 | 2,596 | 2,146 |
| '15 WD | 2,396 | 2,496 | | | | | | | | | | |
| '15 WE | 2,074 | 1,984 | | | | | | | | | | |

Note: 'Weekday' defined as Monday-Friday, 'Weekend' defined as Saturday-Sunday

Weekday/Weekend Monthly Average Daily Traffic ('11-'15)



| | Feb-11 | Feb-12 | Feb-13 | Feb-14 | Feb-15 |
|---------|--------|--------|--------|--------|--------|
| Weekday | 2,460 | 2,422 | 2,436 | 2,390 | 2,496 |
| Weekend | 1,738 | 1,884 | 1,728 | 1,884 | 1,984 |