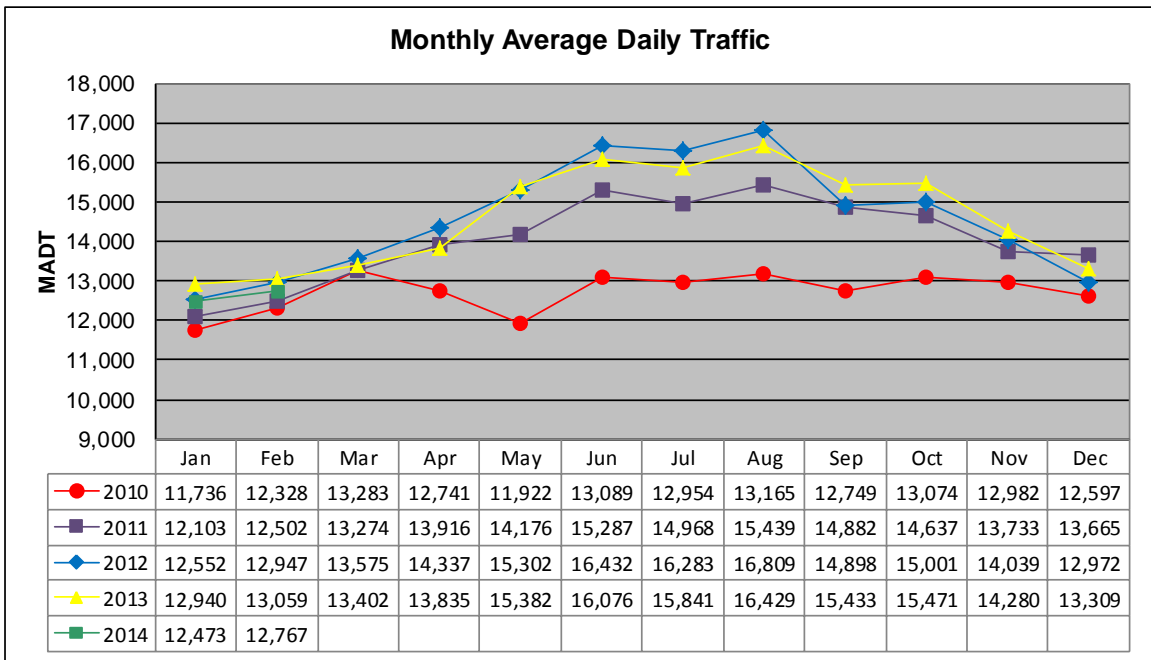


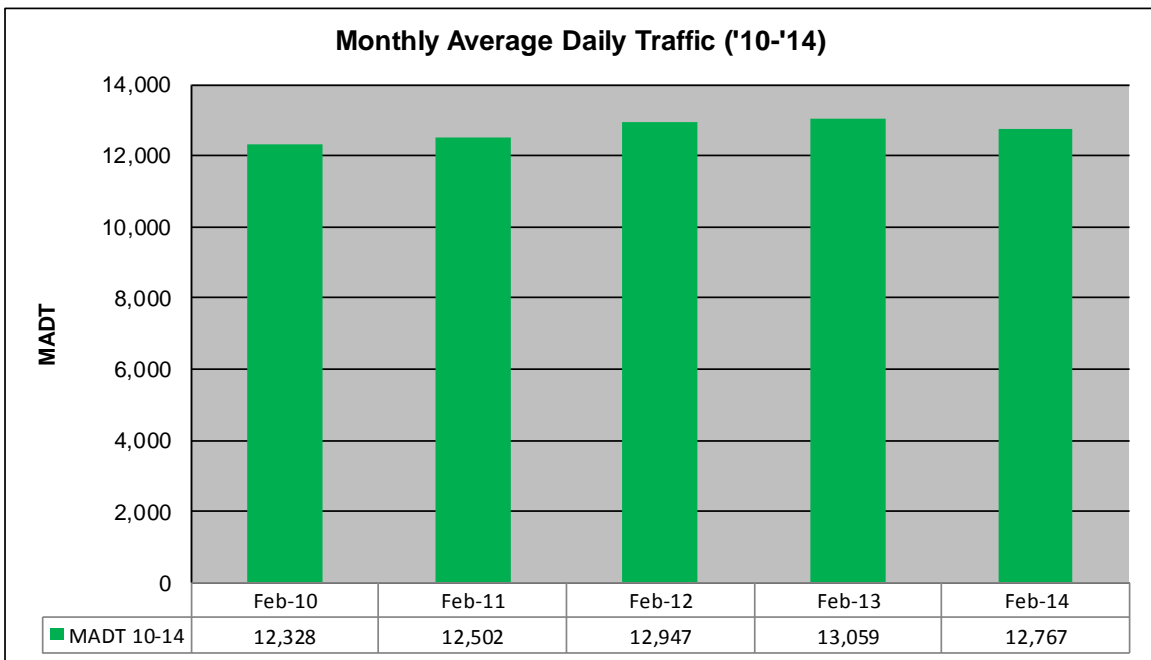
# MONTHLY REPORT, STATION NO. 351 (ATR)

## FEBRUARY 2014

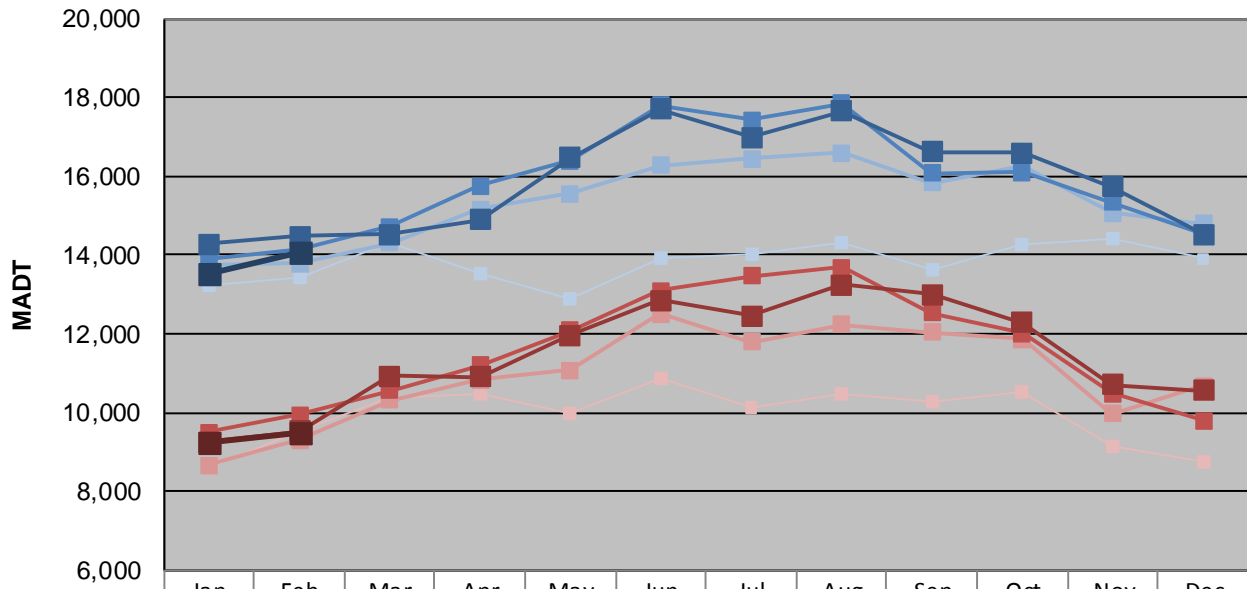
|  |                      |                                    |
|--|----------------------|------------------------------------|
| Station Measurement: VOLUME                        |                      |                                    |
| Route: TH 12                                       | Route Direction: E/W | Lanes: 2                           |
| County: Hennepin                                   |                      | Closest City: Independence         |
| Functional Class: Rural Principal Arterial - Other |                      |                                    |
| Location: W OF CSAH92 IN INDEPENDENCE              |                      |                                    |
| Ref Post: 142+00.839                               | True Mile: 142.285   | Sequence No. 6789                  |
| <b>Volume: 357,463</b>                             |                      | <b>MADT: 12,767</b>                |
| <b>Weekday (M-F) MADT: 14,088</b>                  |                      | <b>Weekend (Sa-Su) MADT: 9,466</b> |



Note: Decrease in traffic April/May 2010 due to construction on TH 12



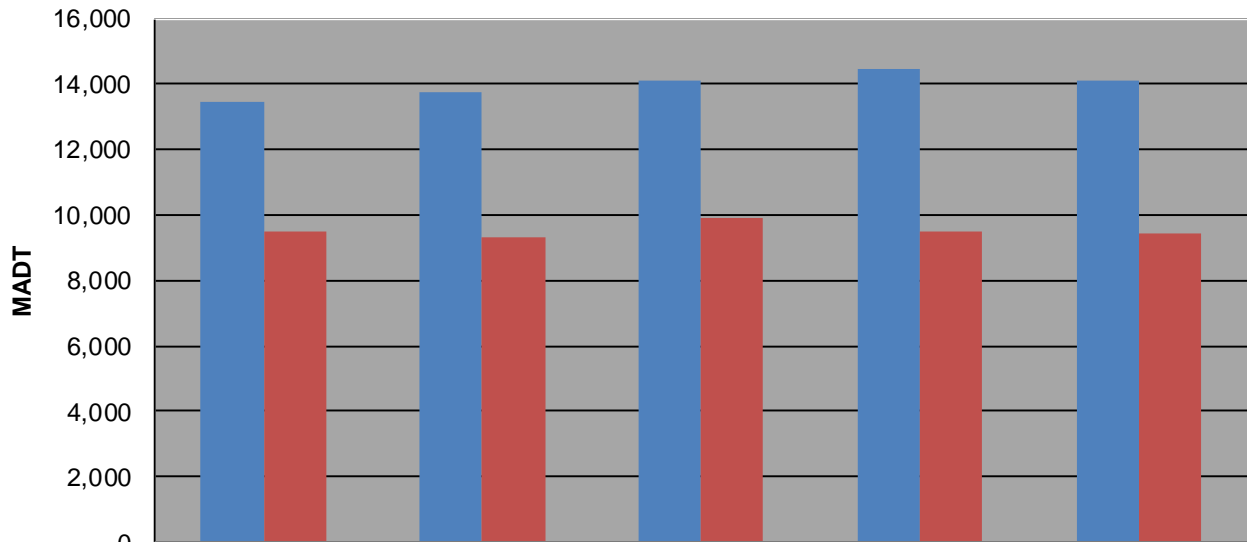
### Weekday (WD)/Weekend (WE) Monthly Average Daily Traffic



|        | Jan    | Feb    | Mar    | Apr    | May    | Jun    | Jul    | Aug    | Sep    | Oct    | Nov    | Dec    |
|--------|--------|--------|--------|--------|--------|--------|--------|--------|--------|--------|--------|--------|
| '10 WD | 13,250 | 13,450 | 14,334 | 13,520 | 12,890 | 13,904 | 14,032 | 14,328 | 13,614 | 14,246 | 14,394 | 13,906 |
| '10 WE | 8,602  | 9,524  | 10,366 | 10,458 | 10,000 | 10,876 | 10,120 | 10,480 | 10,298 | 10,498 | 9,124  | 8,768  |
| '11 WD | 13,772 | 13,776 | 14,314 | 15,176 | 15,548 | 16,272 | 16,442 | 16,590 | 15,824 | 16,254 | 15,066 | 14,802 |
| '11 WE | 8,672  | 9,292  | 10,308 | 10,820 | 11,076 | 12,496 | 11,798 | 12,242 | 12,048 | 11,852 | 9,960  | 10,676 |
| '12 WD | 13,918 | 14,138 | 14,722 | 15,754 | 16,396 | 17,794 | 17,430 | 17,844 | 16,086 | 16,092 | 15,334 | 14,556 |
| '12 WE | 9,498  | 9,934  | 10,562 | 11,190 | 12,096 | 13,086 | 13,456 | 13,698 | 12,522 | 12,008 | 10,474 | 9,806  |
| '13 WD | 14,270 | 14,478 | 14,532 | 14,888 | 16,472 | 17,692 | 16,992 | 17,644 | 16,606 | 16,586 | 15,736 | 14,526 |
| '13 WE | 9,256  | 9,514  | 10,918 | 10,906 | 11,970 | 12,846 | 12,446 | 13,236 | 13,002 | 12,294 | 10,704 | 10,570 |
| '14 WD | 13,532 | 14,088 |        |        |        |        |        |        |        |        |        |        |
| '14 WE | 9,256  | 9,466  |        |        |        |        |        |        |        |        |        |        |

Note: 'Weekday' defined as Monday-Friday, 'Weekend' defined as Saturday-Sunday

### Weekday/Weekend Monthly Average Daily Traffic ('10-'14)



|         | Feb-10 | Feb-11 | Feb-12 | Feb-13 | Feb-14 |
|---------|--------|--------|--------|--------|--------|
| Weekday | 13,450 | 13,776 | 14,138 | 14,478 | 14,088 |
| Weekend | 9,524  | 9,292  | 9,934  | 9,514  | 9,466  |