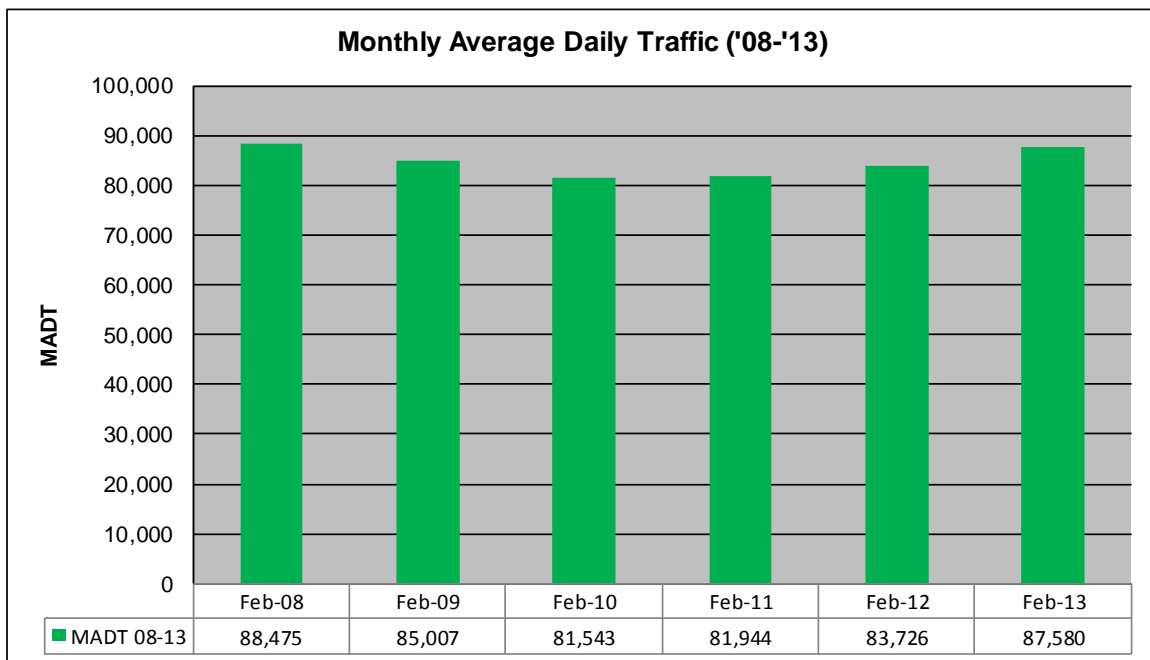
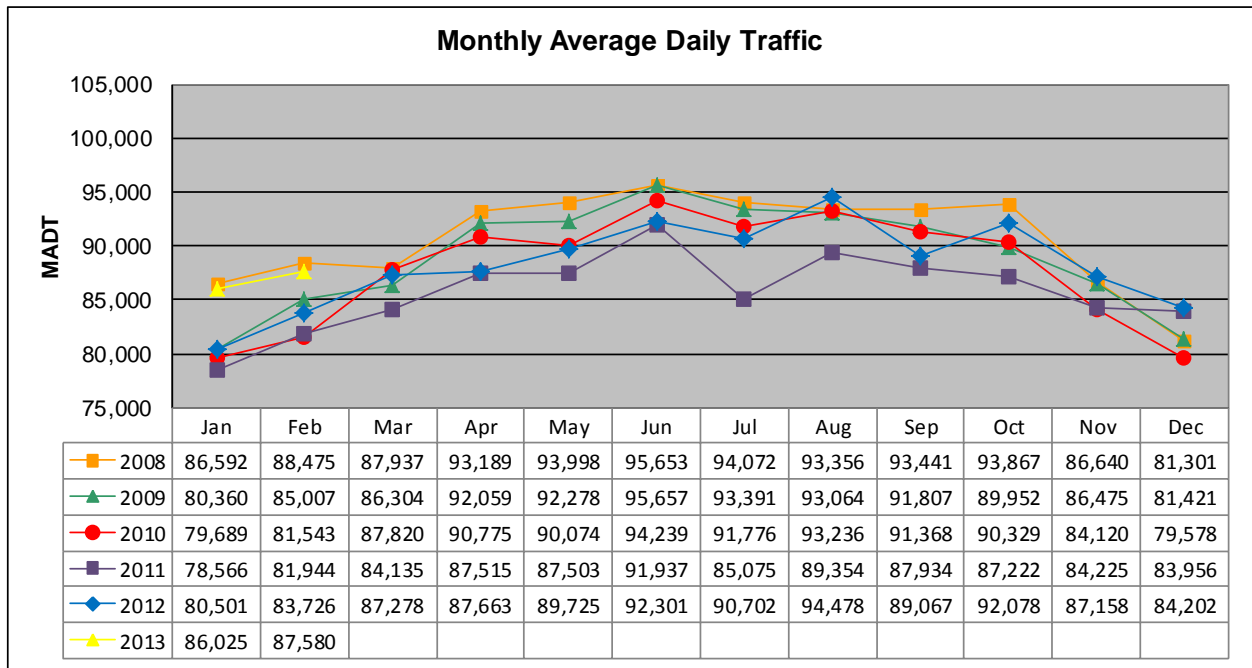


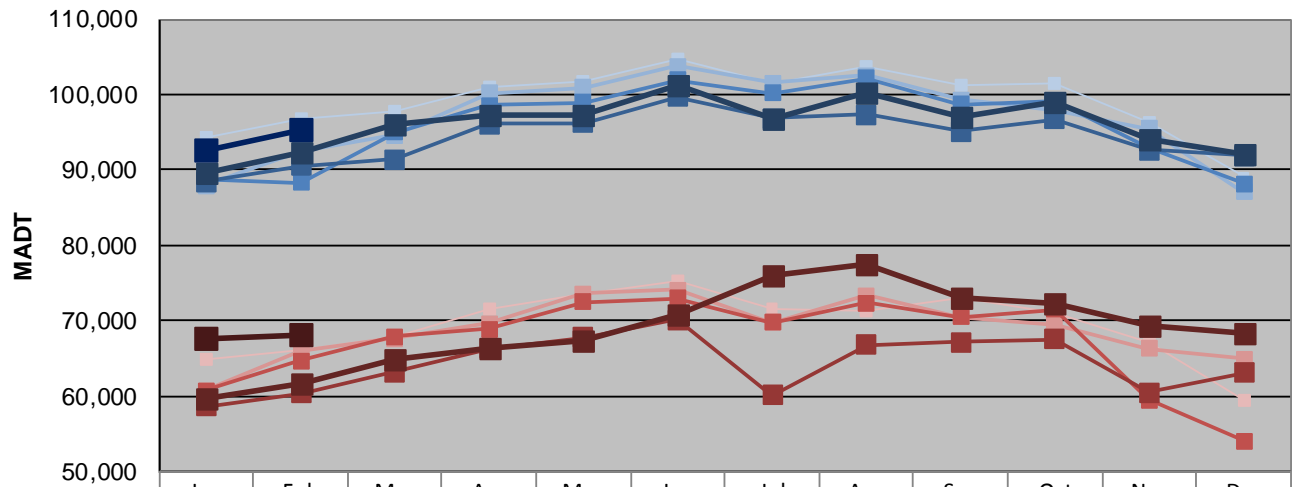
# MONTHLY REPORT, STATION NO. 405 (ATR)

## FEBRUARY 2013

<b>Station Measurement: VOLUME</b>		
Route: TH 169	Route Direction: N/S	Lanes: 4
County: Hennepin		Closest City: St Louis Park
Functional Class: Urban Principal Arterial - Other Freeways or Expressways		
Location: N OF MSAS296 (CEDAR LAKE RD) IN ST LOUIS PARK		
Ref Post: 128+00.870	True Mile: 126.71	Sequence No. 9883
<b>Volume: 2,452,251</b>		<b>MADT: 87,580</b>
<b>Weekday (M-F) MADT: 95,332</b>		<b>Weekend (Sa-Su) MADT: 68,204</b>



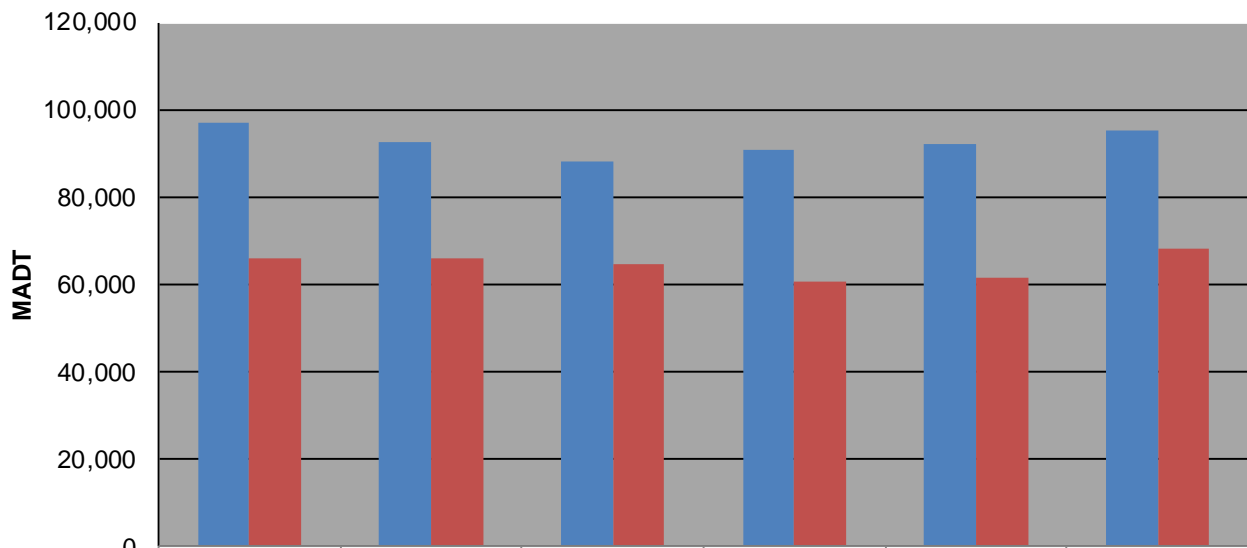
### Weekday (WD)/Weekend (WE) Monthly Average Daily Traffic



	Jan	Feb	Mar	Apr	May	Jun	Jul	Aug	Sep	Oct	Nov	Dec
'08 WD	94,244	96,770	97,852	100,910	101,748	104,788	101,514	103,790	101,358	101,512	96,406	89,034
'08 WE	64,832	66,108	67,772	71,566	73,514	75,350	71,580	71,262	73,036	71,082	67,108	59,444
'09 WD	87,996	92,576	94,650	100,138	100,966	103,778	101,502	102,594	99,326	97,868	95,520	87,114
'09 WE	60,814	66,086	67,620	69,634	73,622	74,074	69,744	73,360	70,544	69,576	66,354	64,910
'10 WD	88,826	88,294	94,950	98,576	98,896	101,952	100,224	102,170	98,712	99,056	93,080	88,214
'10 WE	60,814	64,666	67,972	68,972	72,542	72,962	69,770	72,390	70,472	71,496	59,474	54,118
'11 WD	88,434	90,560	91,470	96,166	96,254	99,718	96,888	97,362	95,130	96,786	92,618	91,922
'11 WE	58,664	60,376	63,262	66,348	67,768	70,182	60,090	66,796	67,230	67,548	60,464	63,144
'12 WD	89,714	92,288	95,978	97,246	97,256	101,148	96,822	100,274	97,030	99,116	94,060	92,002
'12 WE	59,788	61,630	64,860	66,394	67,284	70,722	76,130	77,458	73,144	72,218	69,248	68,238
'13 WD	92,596	95,332										
'13 WE	67,682	68,204										

Note: 'Weekday' defined as Monday-Friday, 'Weekend' defined as Saturday-Sunday

### Weekday/Weekend Monthly Average Daily Traffic ('08-'13)



	Feb-08	Feb-09	Feb-10	Feb-11	Feb-12	Feb-13
Weekday	96,770	92,576	88,294	90,560	92,288	95,332
Weekend	66,108	66,086	64,666	60,376	61,630	68,204