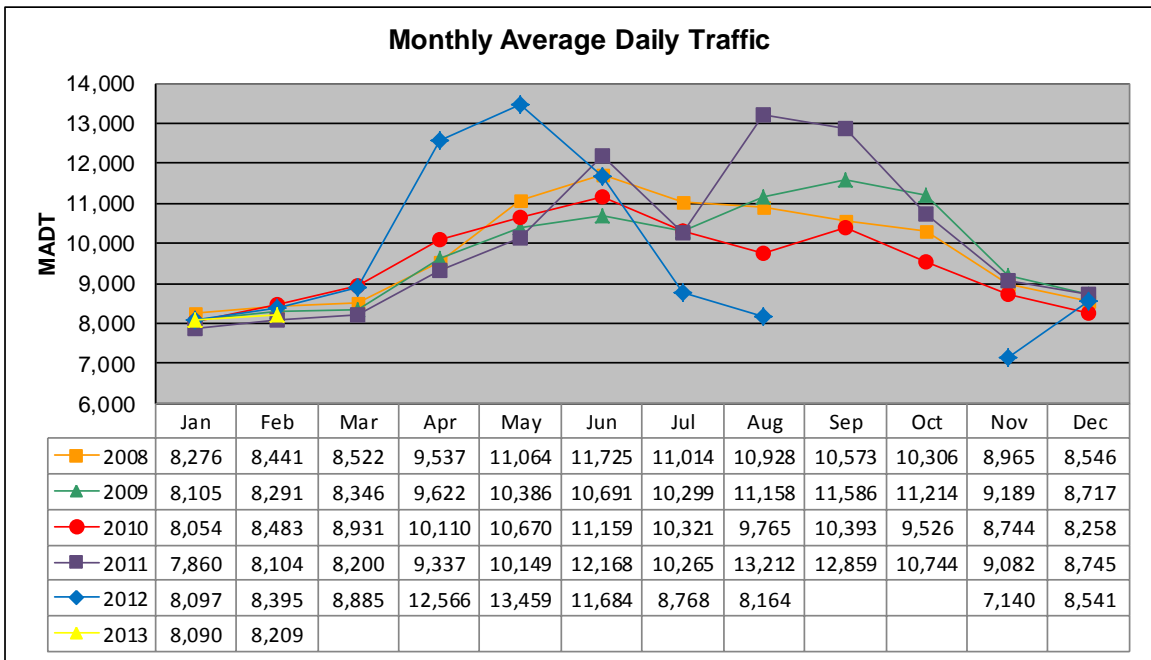


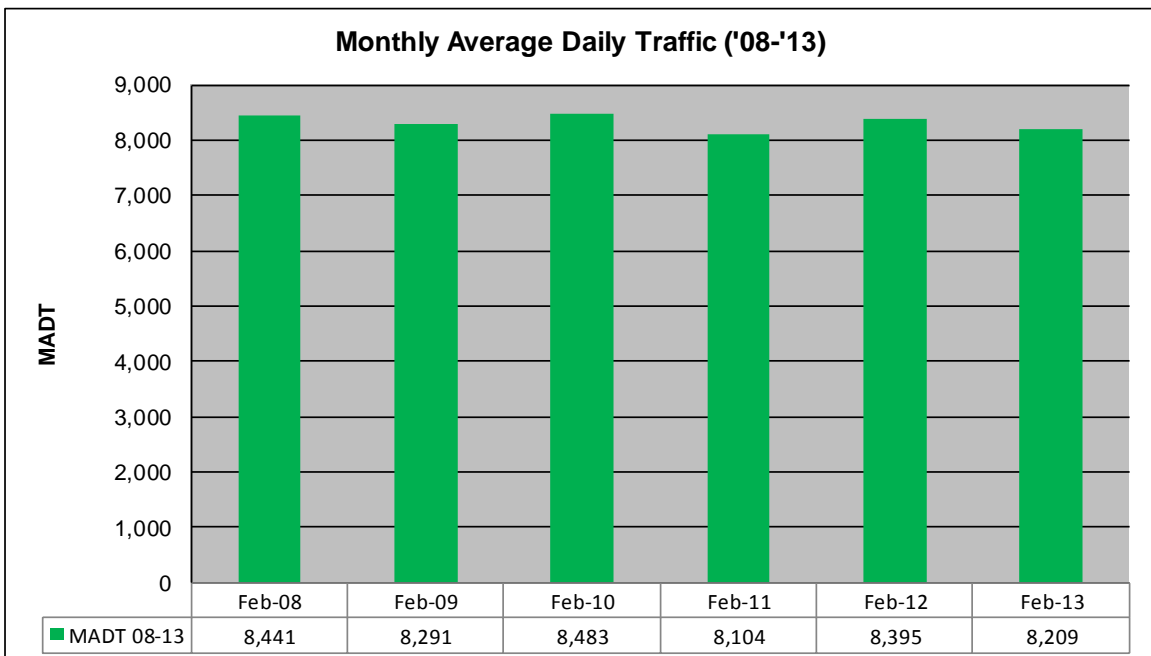
# MONTHLY REPORT, STATION NO. 390 (ATR)

## FEBRUARY 2013

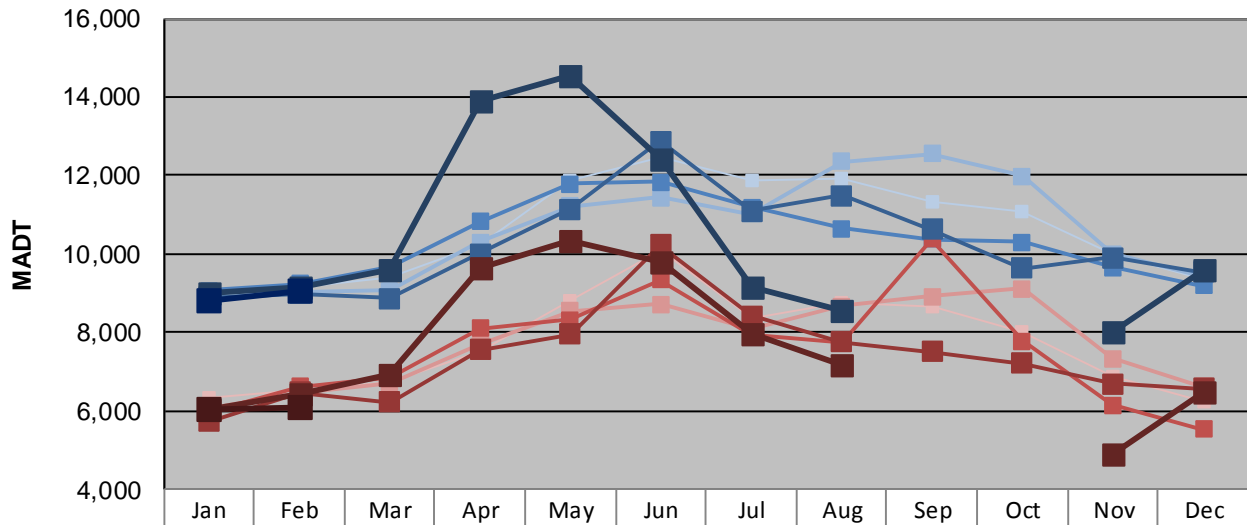
Station Measurement: VOLUME/SPEED/CLASS		
Route: TH 61	Route Direction: N/S	Lanes: 2
County: Washington		Closest City: Hugo
Functional Class: Urban Minor Arterial		
Location: .9 MI N OF CSAH8 IN HUGO		
Ref Post: 153+00.300	True Mile: 153.097	Sequence No. 9878
<b>Volume: 229,847</b>		<b>MADT: 8,209</b>
<b>Weekday (M-F) MADT: 9,056</b>		<b>Weekend (Sa-Su) MADT: 6,090</b>



Note: Increase in traffic Jun/Aug/Sep '11 and Apr/May '12 due to detour from I-35E... Decrease in traffic Aug/Sep '10 and Jul/Aug/Nov '12 due to construction on TH 61... No data Sep/Oct '12 due to sensors destroyed by construction



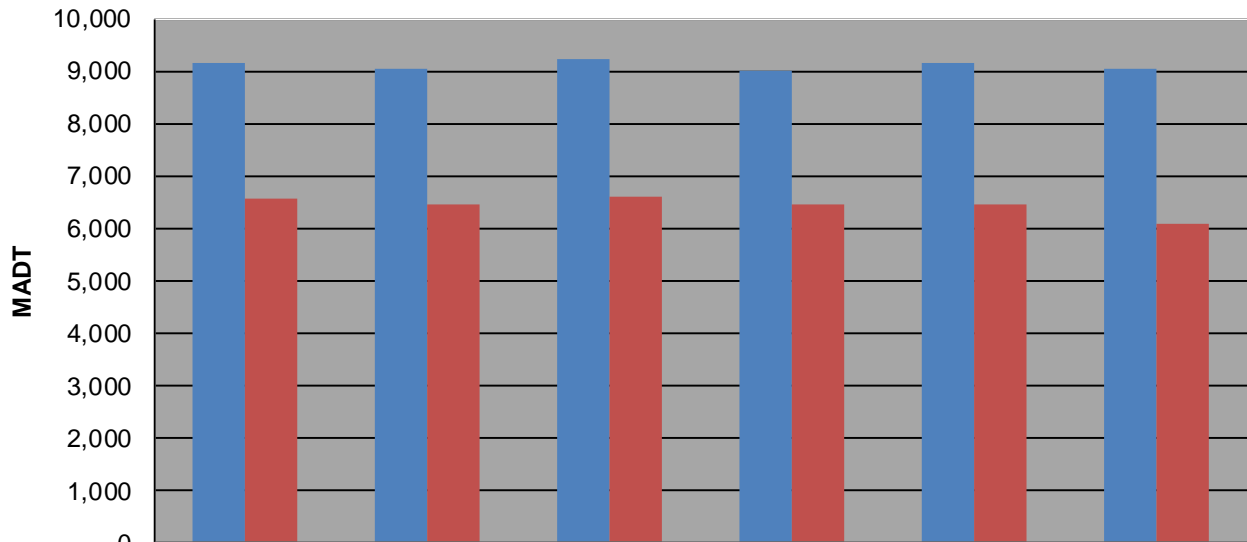
### Weekday (WD)/Weekend (WE) Monthly Average Daily Traffic



	Jan	Feb	Mar	Apr	May	Jun	Jul	Aug	Sep	Oct	Nov	Dec
'08 WD	8,976	9,134	9,388	10,250	11,896	12,468	11,896	11,936	11,334	11,062	10,012	9,344
'08 WE	6,338	6,558	6,754	7,536	8,818	10,110	8,388	8,760	8,648	8,018	6,874	6,216
'09 WD	8,920	9,030	9,078	10,314	11,224	11,444	11,034	12,356	12,558	11,974	10,008	9,434
'09 WE	6,066	6,448	6,728	7,704	8,560	8,730	8,092	8,664	8,928	9,106	7,350	6,610
'10 WD	9,072	9,230	9,670	10,814	11,796	11,838	11,204	10,648	10,384	10,306	9,670	9,184
'10 WE	5,974	6,616	6,840	8,100	8,338	9,348	7,936	7,752	10,374	7,794	6,150	5,544
'11 WD	8,884	9,004	8,882	10,020	11,134	12,866	11,088	11,486	10,620	9,640	9,910	9,550
'11 WE	5,732	6,470	6,222	7,558	7,956	10,226	8,432	7,748	7,508	7,218	6,700	6,572
'12 WD	9,008	9,152	9,620	13,896	14,530	12,422	9,134	8,548			8,008	9,590
'12 WE	6,060	6,436	6,930	9,662	10,360	9,776	7,962	7,172			4,882	6,466
'13 WD	8,826	9,056										
'13 WE	6,016	6,090										

Note: 'Weekday' defined as Monday-Friday, 'Weekend' defined as Saturday-Sunday

### Weekday/Weekend Monthly Average Daily Traffic ('08-'13)



	Feb-08	Feb-09	Feb-10	Feb-11	Feb-12	Feb-13
Weekday	9,134	9,030	9,230	9,004	9,152	9,056
Weekend	6,558	6,448	6,616	6,470	6,436	6,090