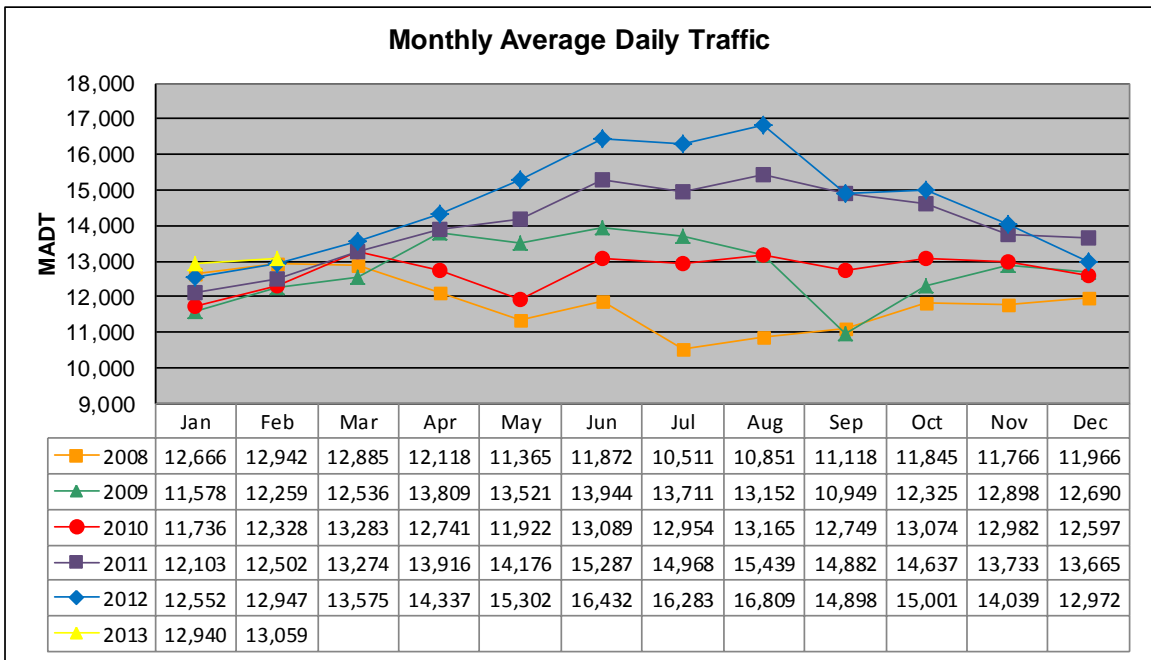


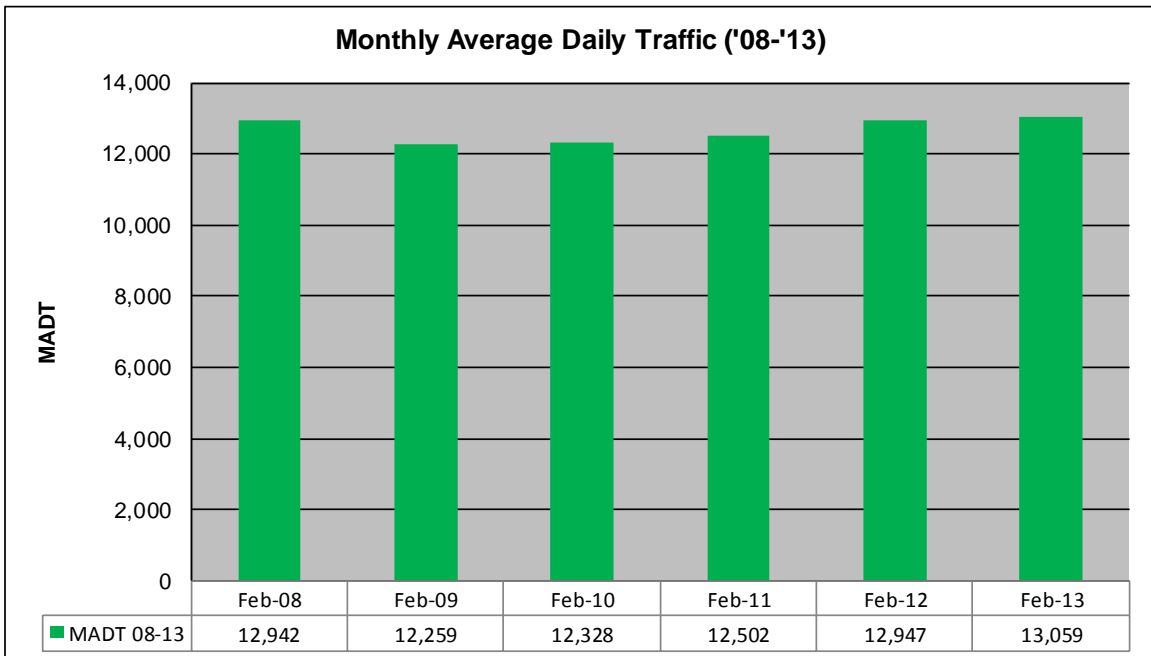
MONTHLY REPORT, STATION NO. 351 (ATR)

FEBRUARY 2013

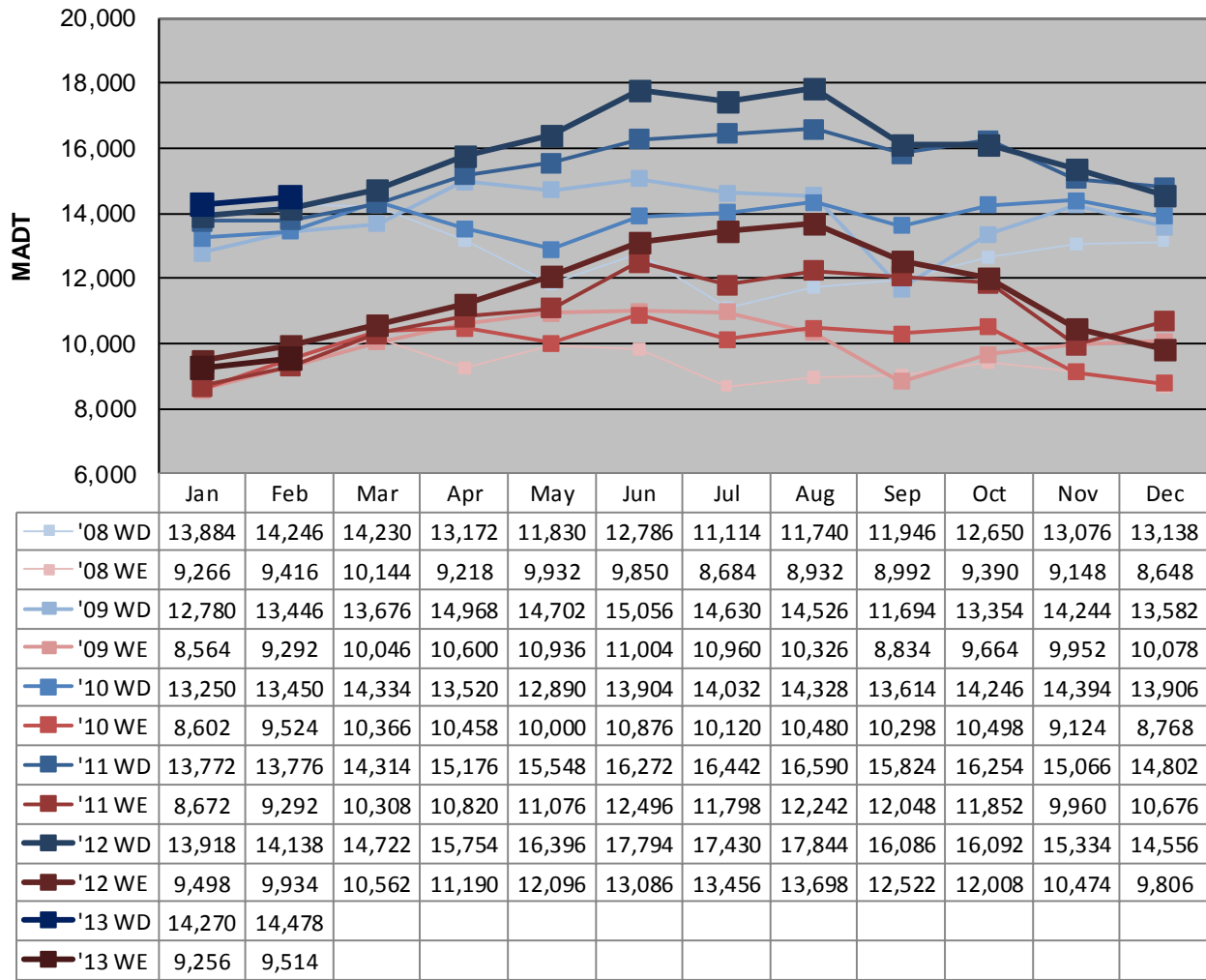
Station Measurement: VOLUME		
Route: TH 12	Route Direction: E/W	Lanes: 2
County: Hennepin		Closest City: Independence
Functional Class: Rural Principal Arterial - Other		
Location: W OF CSAH92 IN INDEPENDENCE		
Ref Post: 142+00.839	True Mile: 142.285	Sequence No. 6789
Volume: 365,665		MADT: 13,059
Weekday (M-F) MADT: 14,478		Weekend (Sa-Su) MADT: 9,514



Note: Decrease in traffic April to November 2008, September/October 2009, and April/May 2010 due to construction on TH 12



Weekday (WD)/Weekend (WE) Monthly Average Daily Traffic



Note: 'Weekday' defined as Monday-Friday, 'Weekend' defined as Saturday-Sunday

Weekday/Weekend Monthly Average Daily Traffic ('08-'13)

