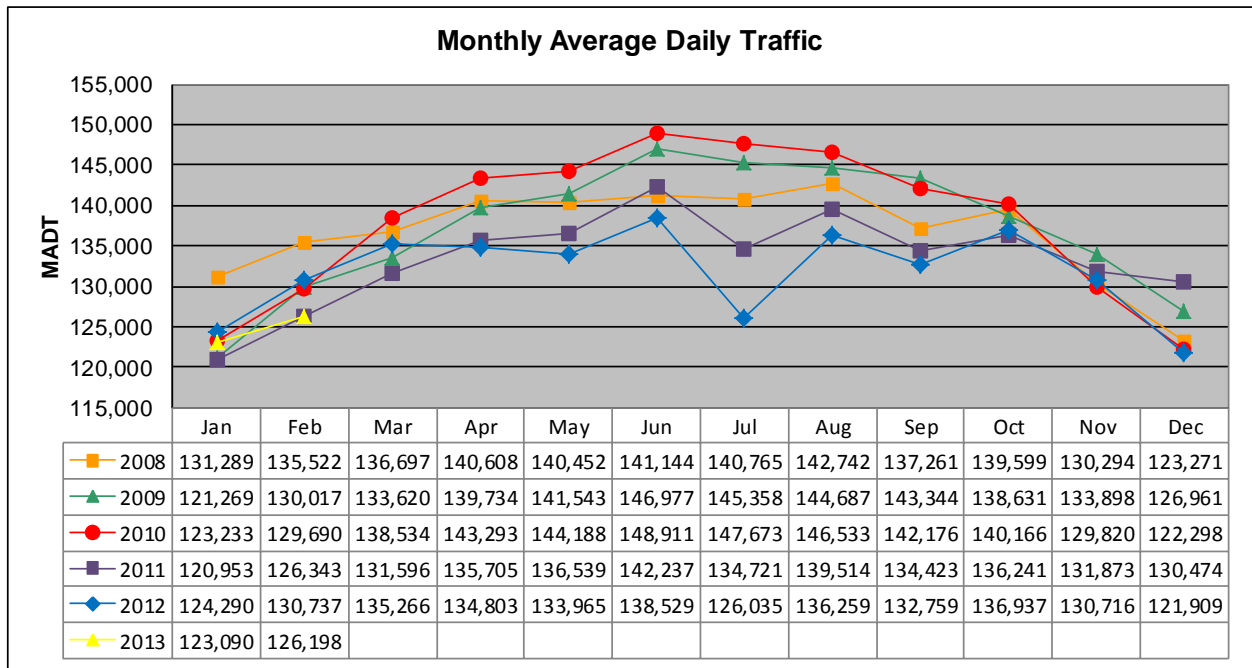


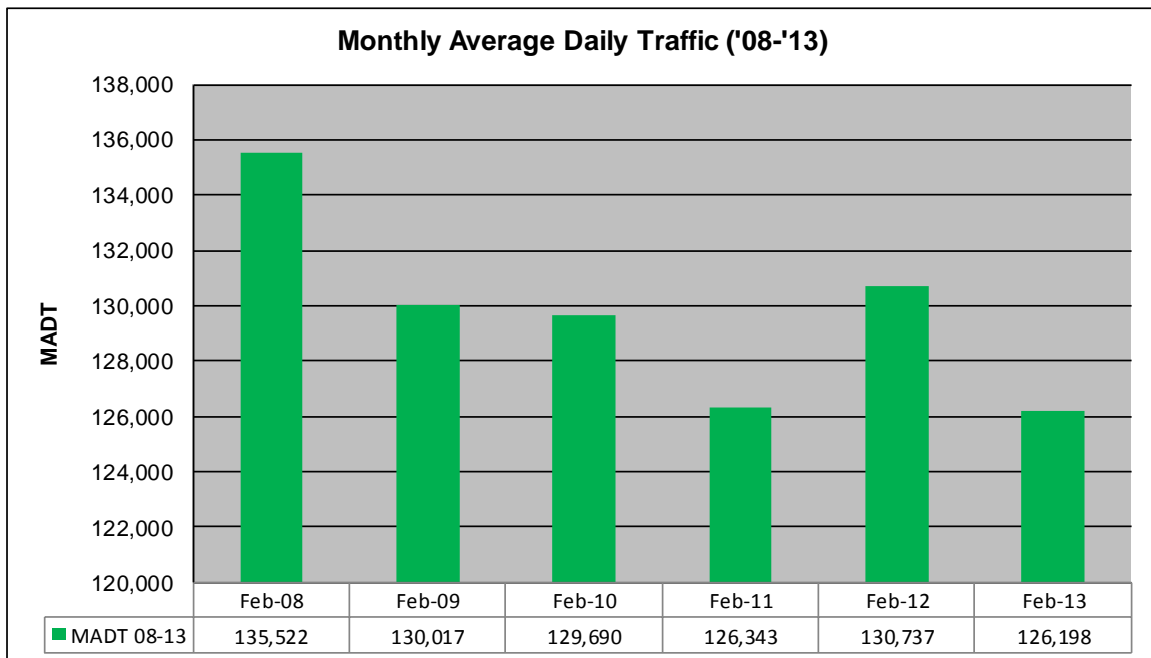
MONTHLY REPORT, STATION NO. 303 (ATR)

FEBRUARY 2013

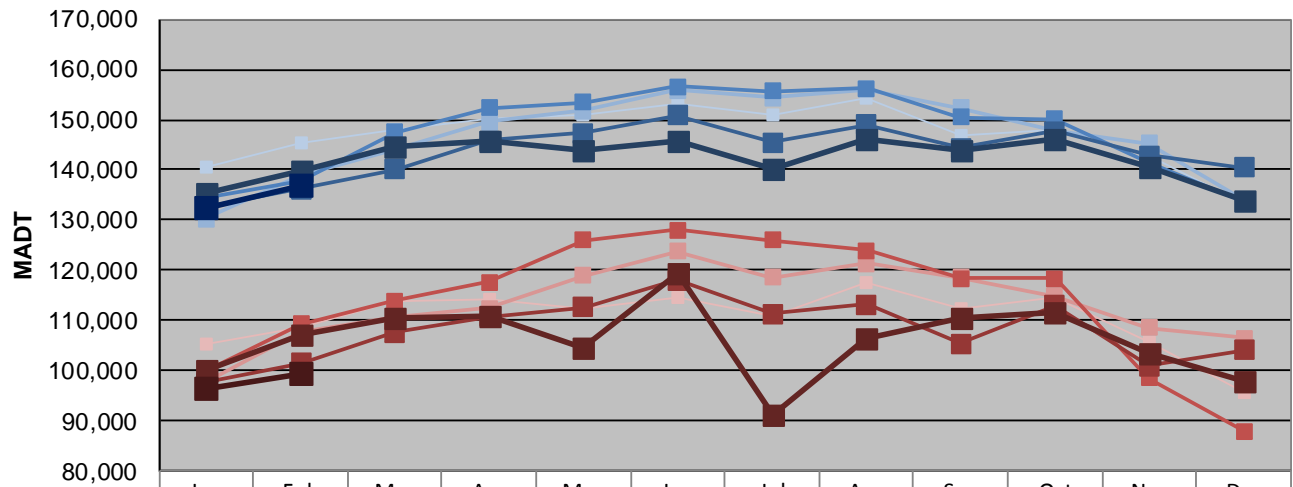
| | | |
|---|----------------------|-------------------------------------|
| Station Measurement: VOLUME | | |
| Route: I-35E | Route Direction: N/S | Lanes: 6 |
| County: Ramsey | | Closest City: St Paul |
| Functional Class: Urban Principal Arterial - Interstate | | |
| Location: S OF MSAS109 (E ARLINGTON AVE) IN ST PAUL | | |
| Ref Post: 109+00.835 | True Mile: 109.893 | Sequence No. 9836 |
| Volume: 3,533,555 | | MADT: 126,198 |
| Weekday (M-F) MADT: 136,886 | | Weekend (Sa-Su) MADT: 99,480 |



Note: Decrease in traffic July 2012 due to construction on I-35E



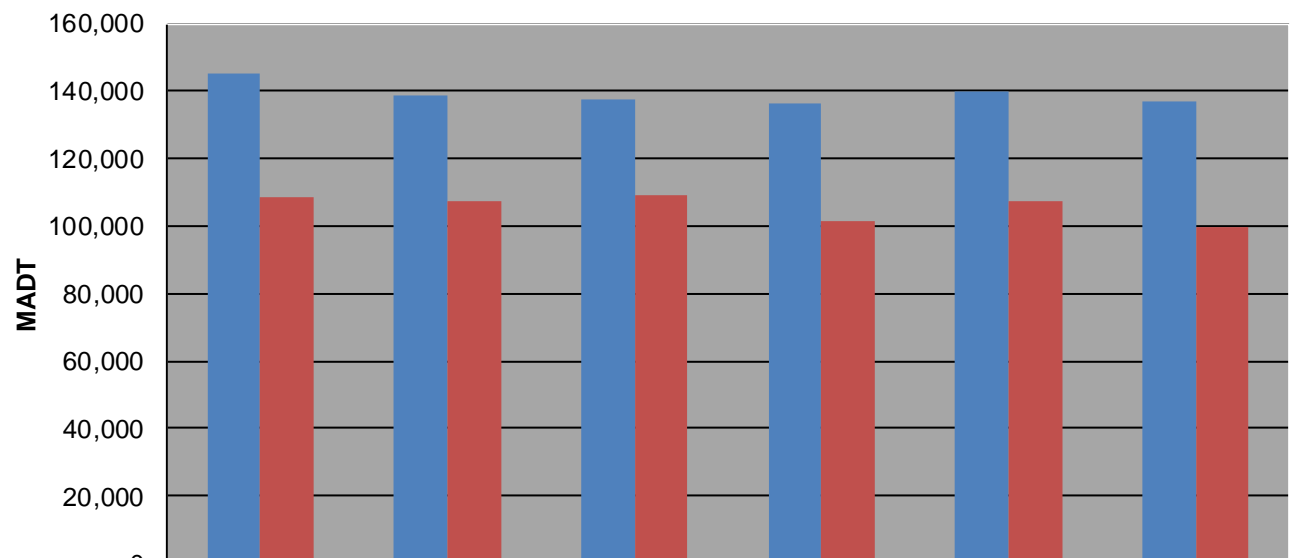
Weekday (WD)/Weekend (WE) Monthly Average Daily Traffic



| | Jan | Feb | Mar | Apr | May | Jun | Jul | Aug | Sep | Oct | Nov | Dec |
|--------|---------|---------|---------|---------|---------|---------|---------|---------|---------|---------|---------|---------|
| '08 WD | 140,516 | 145,284 | 148,086 | 150,140 | 151,052 | 153,124 | 150,834 | 154,368 | 146,954 | 147,852 | 142,588 | 133,140 |
| '08 WE | 105,324 | 108,648 | 113,814 | 114,086 | 112,500 | 114,472 | 110,692 | 117,708 | 112,464 | 114,538 | 105,706 | 95,638 |
| '09 WD | 130,306 | 138,958 | 143,902 | 149,594 | 151,850 | 155,780 | 154,380 | 156,006 | 152,272 | 147,722 | 145,332 | 133,928 |
| '09 WE | 97,868 | 107,664 | 110,874 | 112,502 | 119,016 | 123,826 | 118,576 | 121,336 | 118,496 | 114,850 | 108,636 | 106,582 |
| '10 WD | 134,406 | 137,836 | 147,454 | 152,314 | 153,384 | 156,518 | 155,706 | 156,284 | 150,554 | 150,100 | 141,288 | 133,810 |
| '10 WE | 99,982 | 109,324 | 113,960 | 117,588 | 126,018 | 128,078 | 125,904 | 123,924 | 118,322 | 118,400 | 98,586 | 87,980 |
| '11 WD | 132,586 | 136,270 | 140,092 | 145,776 | 147,338 | 150,904 | 145,518 | 148,998 | 144,306 | 147,592 | 142,806 | 140,374 |
| '11 WE | 97,638 | 101,502 | 107,680 | 110,742 | 112,630 | 118,000 | 111,382 | 113,168 | 105,360 | 113,044 | 100,982 | 104,194 |
| '12 WD | 135,318 | 139,948 | 144,506 | 145,768 | 143,978 | 145,906 | 140,202 | 146,268 | 143,884 | 146,156 | 140,582 | 133,864 |
| '12 WE | 99,982 | 107,190 | 110,406 | 110,720 | 104,494 | 119,572 | 91,114 | 106,594 | 110,512 | 111,504 | 103,494 | 97,834 |
| '13 WD | 132,498 | 136,886 | | | | | | | | | | |
| '13 WE | 96,464 | 99,480 | | | | | | | | | | |

Note: 'Weekday' defined as Monday-Friday, 'Weekend' defined as Saturday-Sunday

Weekday/Weekend Monthly Average Daily Traffic ('08-'13)



| | Feb-08 | Feb-09 | Feb-10 | Feb-11 | Feb-12 | Feb-13 |
|---------|---------|---------|---------|---------|---------|---------|
| Weekday | 145,284 | 138,958 | 137,836 | 136,270 | 139,948 | 136,886 |
| Weekend | 108,648 | 107,664 | 109,324 | 101,502 | 107,190 | 99,480 |