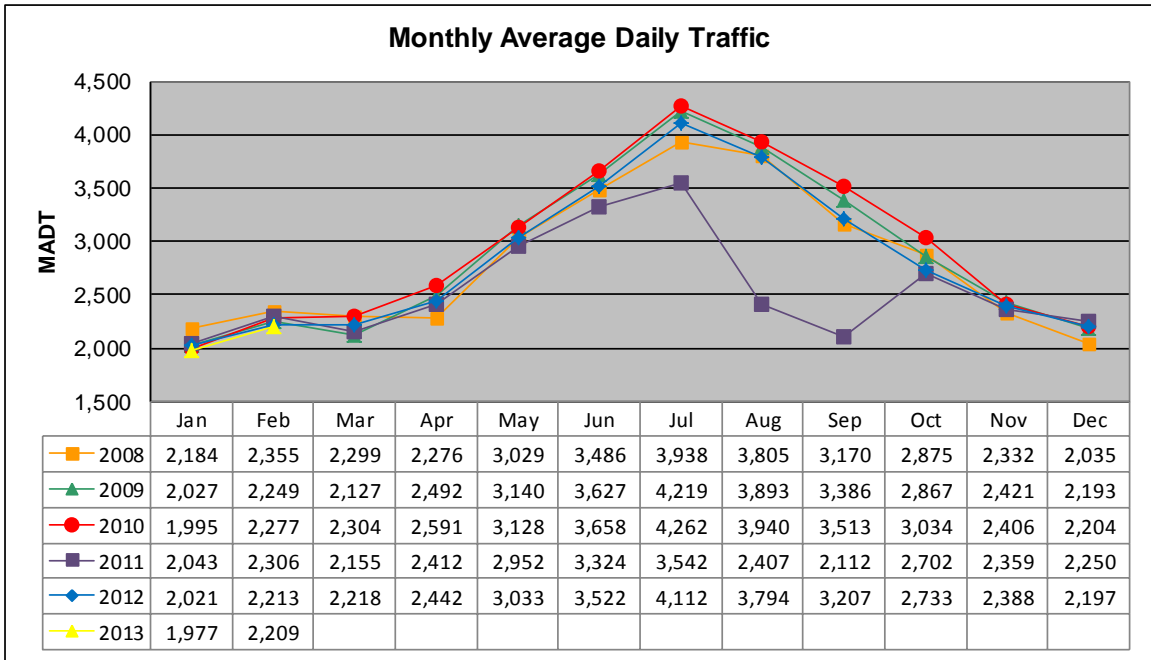


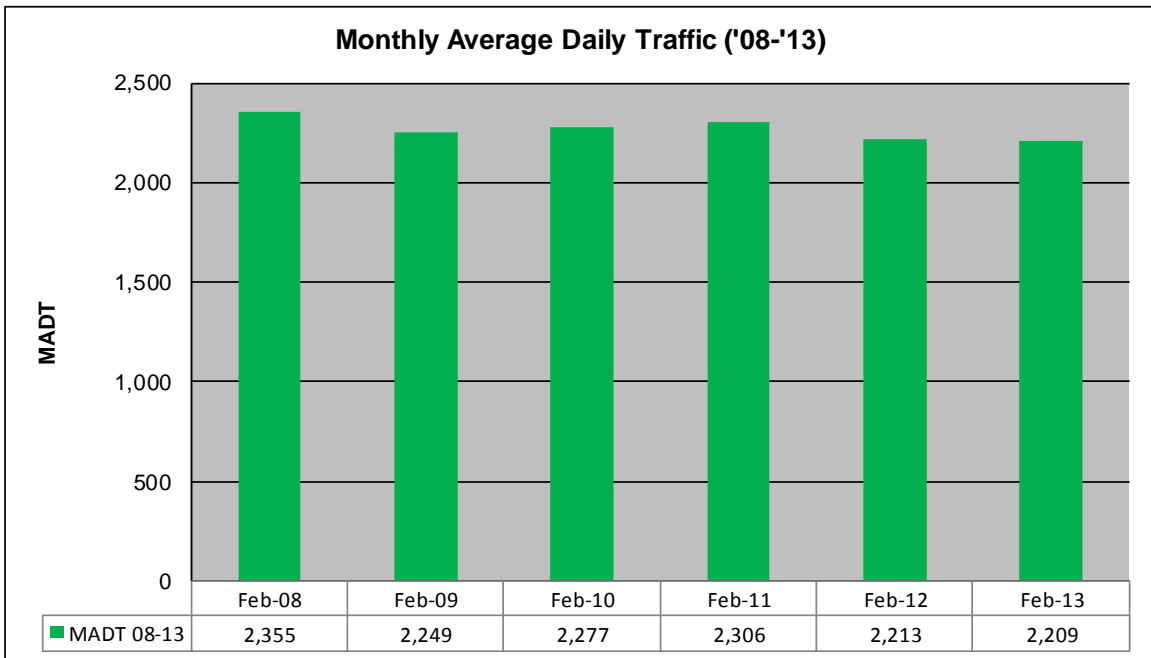
# MONTHLY REPORT, STATION NO. 221 (ATR)

## FEBRUARY 2013

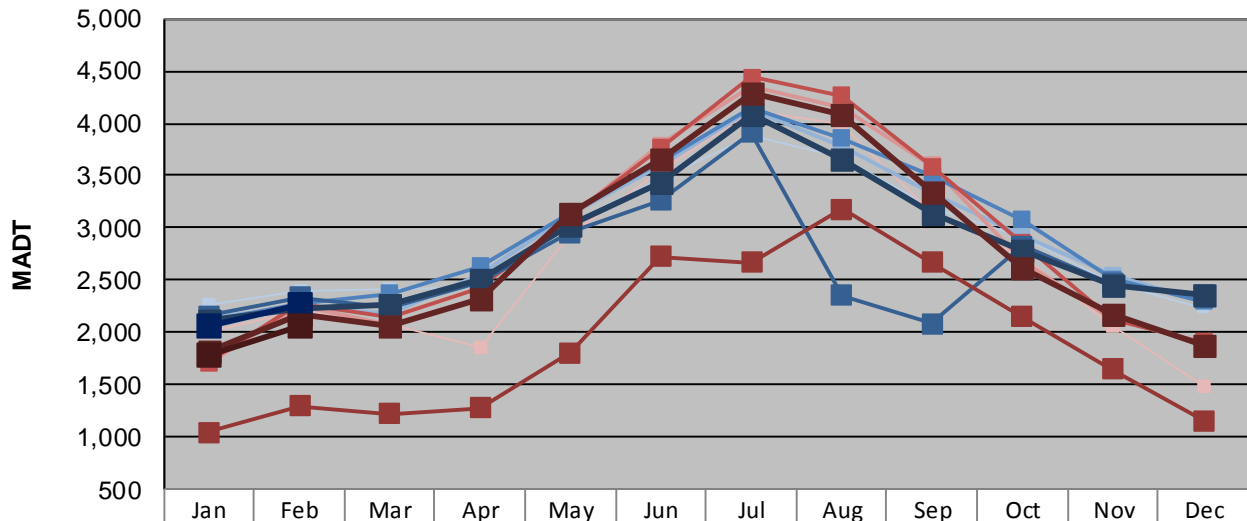
Station Measurement: VOLUME/SPEED/CLASS		
Route: TH 34	Route Direction: N/S	Lanes: 2
County: Hubbard	Closest City: Nevis	
Functional Class: Rural Principal Arterial - Other		
Location: 1.5 NE OF CSAH2 (BUNYAN TRAILS RD), NE OF NEVIS		
Ref Post: 087+00.730	True Mile: 88.713	Sequence No. 6728
<b>Volume: 61,843</b>		<b>MADT: 2,209</b>
<b>Weekday (M-F) MADT: 2,268</b>		<b>Weekend (Sa-Su) MADT: 2,060</b>



Note: Decrease in traffic July to September 2011 due to construction on TH 34



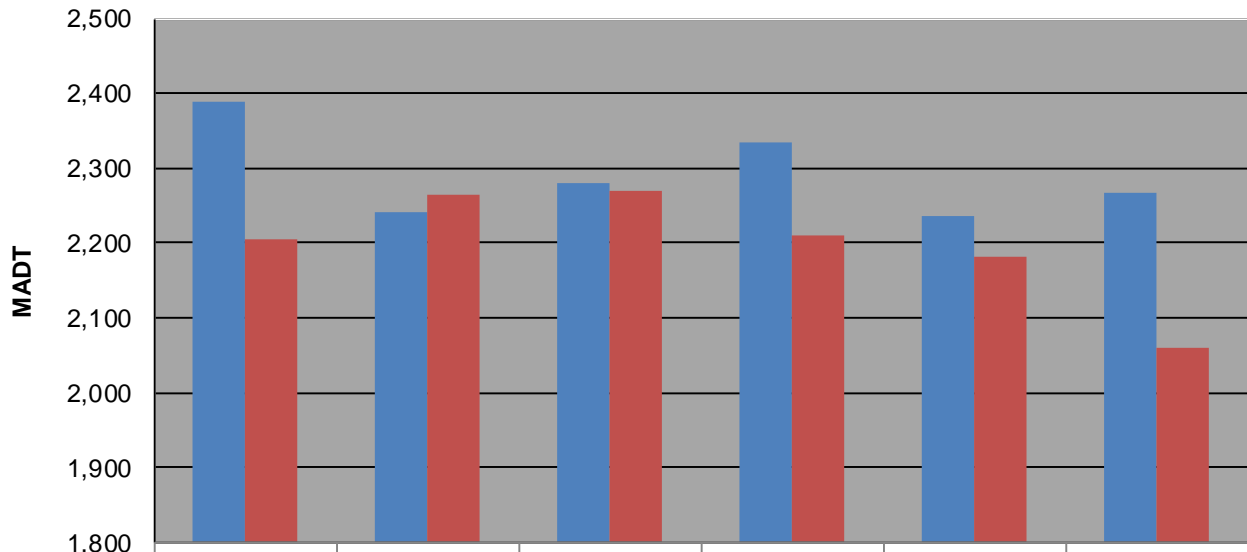
### Weekday (WD)/Weekend (WE) Monthly Average Daily Traffic



	Jan	Feb	Mar	Apr	May	Jun	Jul	Aug	Sep	Oct	Nov	Dec
'08 WD	2,264	2,390	2,410	2,430	3,036	3,480	3,878	3,682	3,198	2,908	2,470	2,236
'08 WE	2,002	2,206	2,072	1,858	2,936	3,538	4,128	3,988	3,142	2,726	2,056	1,488
'09 WD	2,142	2,242	2,174	2,560	3,122	3,592	4,134	3,784	3,338	2,920	2,552	2,298
'09 WE	1,708	2,264	2,080	2,328	3,116	3,794	4,346	4,156	3,600	2,690	2,136	1,898
'10 WD	2,114	2,280	2,376	2,630	3,144	3,638	4,142	3,856	3,500	3,074	2,512	2,298
'10 WE	1,718	2,270	2,144	2,424	3,106	3,764	4,436	4,264	3,588	2,856	2,130	1,906
'11 WD	2,160	2,334	2,244	2,484	2,958	3,264	3,908	2,352	2,086	2,828	2,464	2,354
'11 WE	1,048	1,302	1,220	1,276	1,804	2,726	2,674	3,182	2,668	2,150	1,648	1,154
'12 WD	2,120	2,236	2,258	2,512	3,026	3,430	4,086	3,662	3,144	2,788	2,458	2,360
'12 WE	1,814	2,182	2,068	2,318	3,146	3,654	4,280	4,082	3,336	2,626	2,166	1,876
'13 WD	2,058	2,268										
'13 WE	1,780	2,060										

Note: 'Weekday' defined as Monday-Friday, 'Weekend' defined as Saturday-Sunday

### Weekday/Weekend Monthly Average Daily Traffic ('08-'13)



	Feb-08	Feb-09	Feb-10	Feb-11	Feb-12	Feb-13
Weekday	2,390	2,242	2,280	2,334	2,236	2,268
Weekend	2,206	2,264	2,270	2,210	2,182	2,060