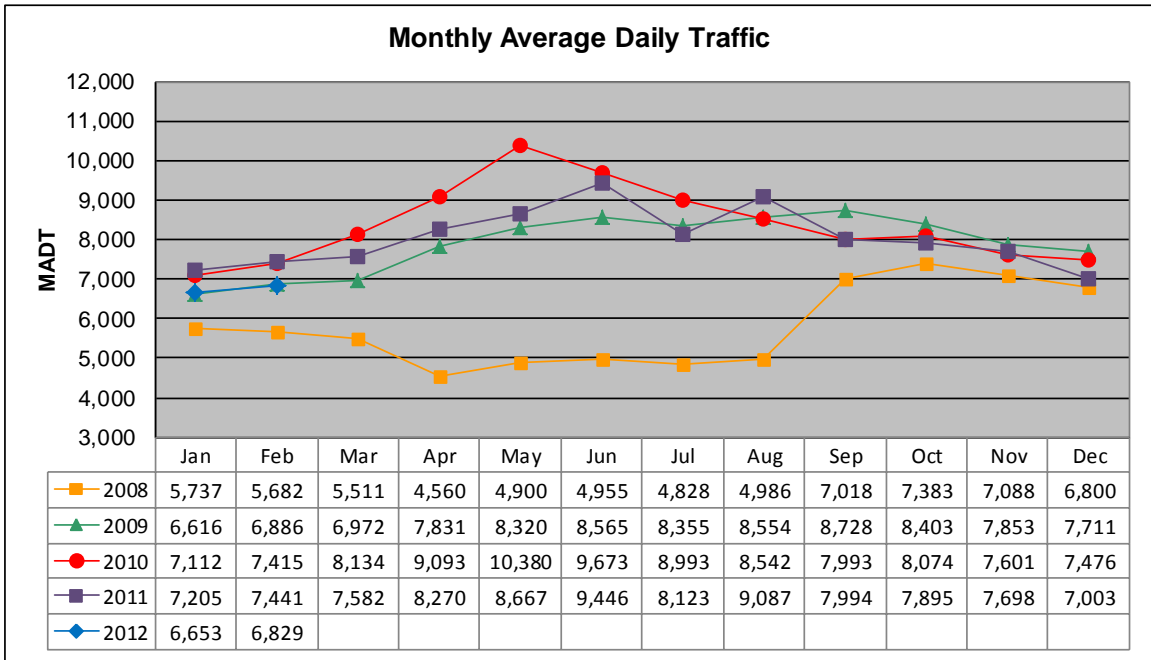


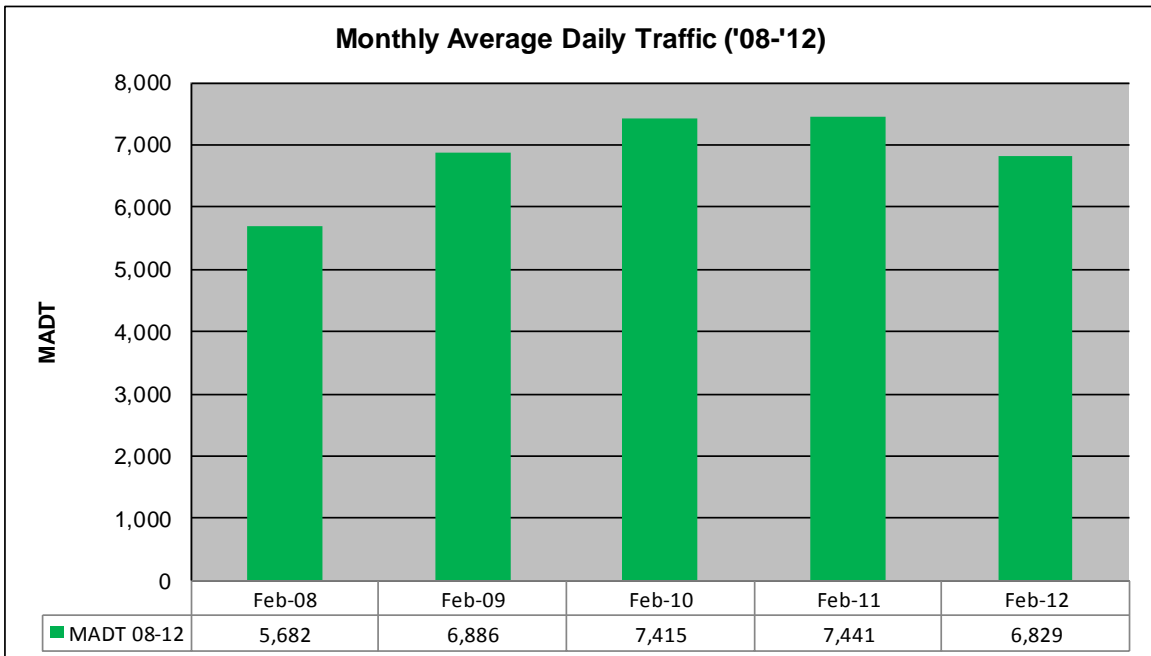
# MONTHLY REPORT, STATION NO. 422 (ATR)

## FEBRUARY 2012

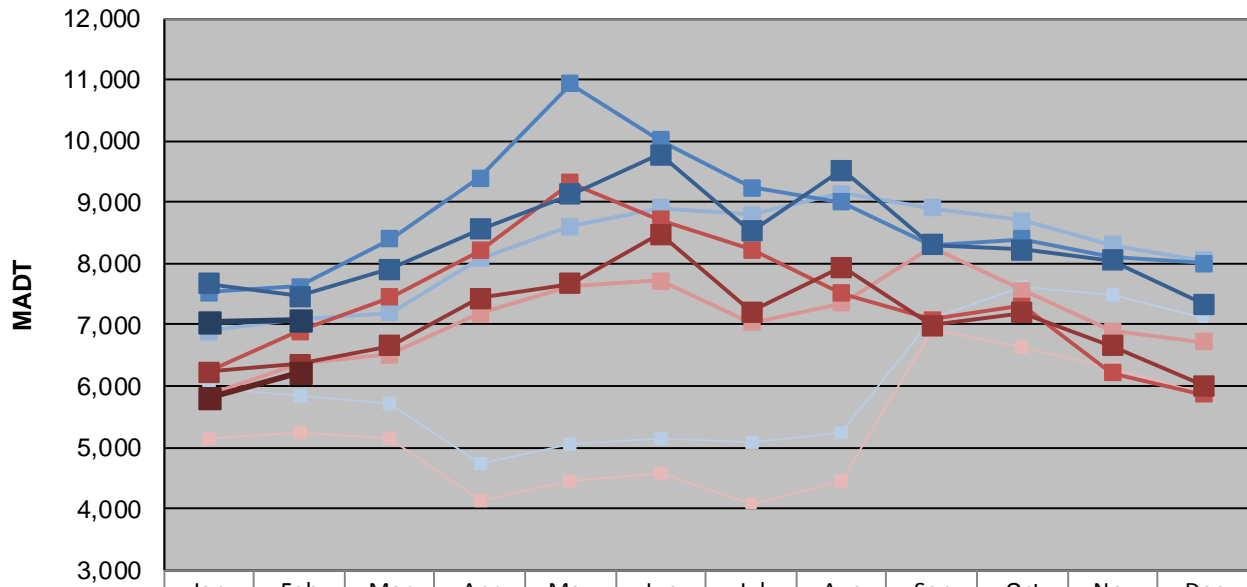
|  |                      |                                    |
|--|----------------------|------------------------------------|
| Station Measurement: VOLUME                              |                      |                                    |
| Route: CSAH 14   | Route Direction: E/W | Lanes: 2                           |
| County: Anoka  |                      | Closest City: Blaine               |
| Functional Class: Urban Other Principal Arterial         |                      |                                    |
| Location: .7 MI W OF CSAH17 (LEXINGTON AVE NE) IN BLAINE |                      |                                    |
| Ref Post: 010+00.100                                     | True Mile: 10.1      | Sequence No. 9893                  |
| <b>Volume: 198,041</b>                                   |                      | <b>MADT: 6,829</b>                 |
| <b>Weekday (M-F) MADT: 7,072</b>                         |                      | <b>Weekend (Sa-Su) MADT: 6,234</b> |



Note: Decrease in traffic January to September 2008 due to construction on TH 65 & CSAH 14



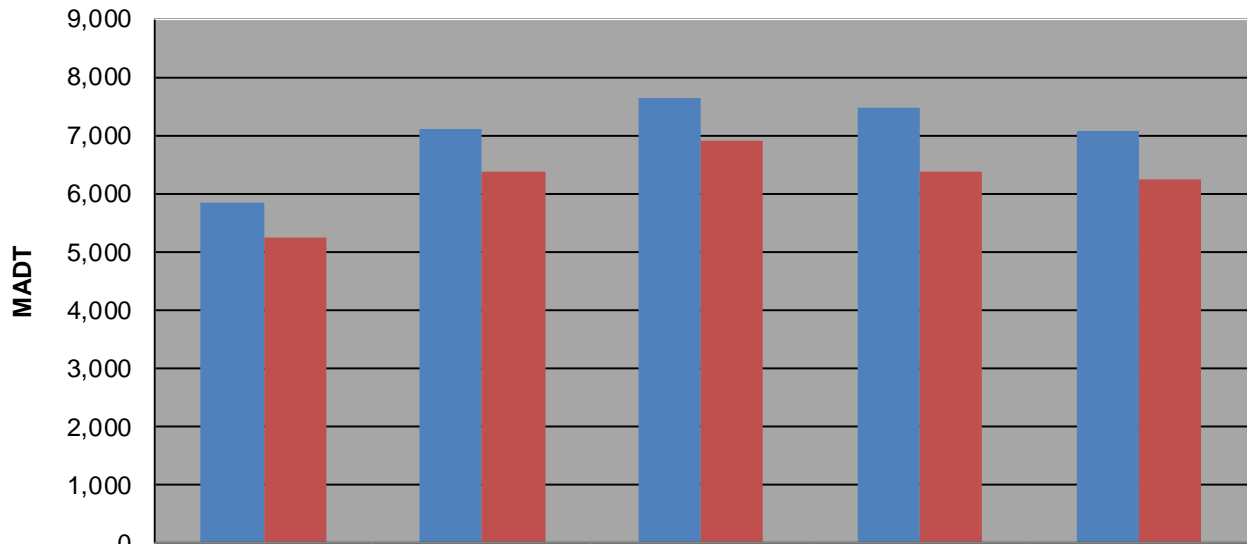
### Weekday (WD)/Weekend (WE) Monthly Average Daily Traffic



|        | Jan   | Feb   | Mar   | Apr   | May    | Jun    | Jul   | Aug   | Sep   | Oct   | Nov   | Dec   |
|--------|-------|-------|-------|-------|--------|--------|-------|-------|-------|-------|-------|-------|
| '08 WD | 5,960 | 5,834 | 5,712 | 4,720 | 5,052  | 5,132  | 5,078 | 5,230 | 7,106 | 7,630 | 7,486 | 7,124 |
| '08 WE | 5,144 | 5,232 | 5,136 | 4,138 | 4,450  | 4,568  | 4,086 | 4,436 | 6,916 | 6,620 | 6,292 | 5,866 |
| '09 WD | 6,896 | 7,098 | 7,204 | 8,078 | 8,608  | 8,912  | 8,796 | 9,142 | 8,906 | 8,694 | 8,310 | 8,046 |
| '09 WE | 5,858 | 6,358 | 6,514 | 7,182 | 7,646  | 7,714  | 7,038 | 7,354 | 8,268 | 7,554 | 6,904 | 6,730 |
| '10 WD | 7,532 | 7,622 | 8,400 | 9,392 | 10,926 | 10,018 | 9,244 | 9,000 | 8,308 | 8,394 | 8,098 | 8,010 |
| '10 WE | 6,228 | 6,902 | 7,450 | 8,212 | 9,326  | 8,720  | 8,220 | 7,516 | 7,092 | 7,306 | 6,220 | 5,862 |
| '11 WD | 7,670 | 7,474 | 7,910 | 8,566 | 9,128  | 9,778  | 8,522 | 9,520 | 8,308 | 8,226 | 8,046 | 7,338 |
| '11 WE | 6,234 | 6,366 | 6,656 | 7,434 | 7,678  | 8,478  | 7,216 | 7,940 | 6,986 | 7,192 | 6,658 | 6,014 |
| '12 WD | 7,042 | 7,072 |       |       |        |        |       |       |       |       |       |       |
| '12 WE | 5,810 | 6,234 |       |       |        |        |       |       |       |       |       |       |

Note: 'Weekday' defined as Monday-Friday, 'Weekend' defined as Saturday-Sunday

### Weekday/Weekend Monthly Average Daily Traffic ('07-'11)



|         | Feb-08 | Feb-09 | Feb-10 | Feb-11 | Feb-12 |
|---------|--------|--------|--------|--------|--------|
| Weekday | 5,834  | 7,098  | 7,622  | 7,474  | 7,072  |
| Weekend | 5,232  | 6,358  | 6,902  | 6,366  | 6,234  |