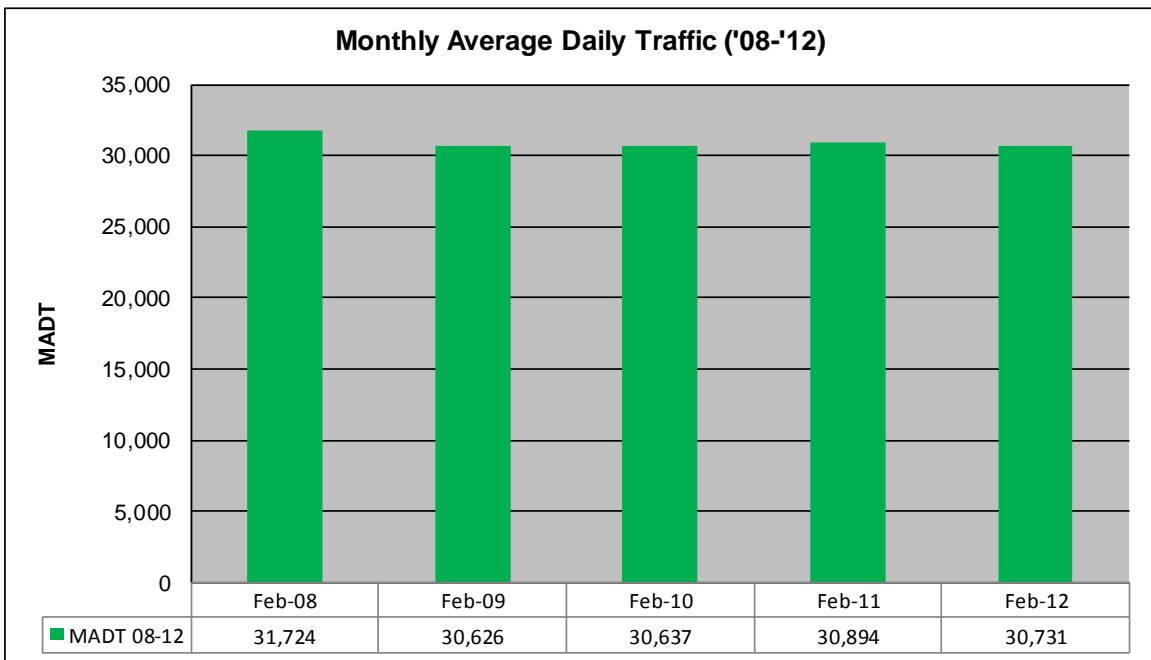
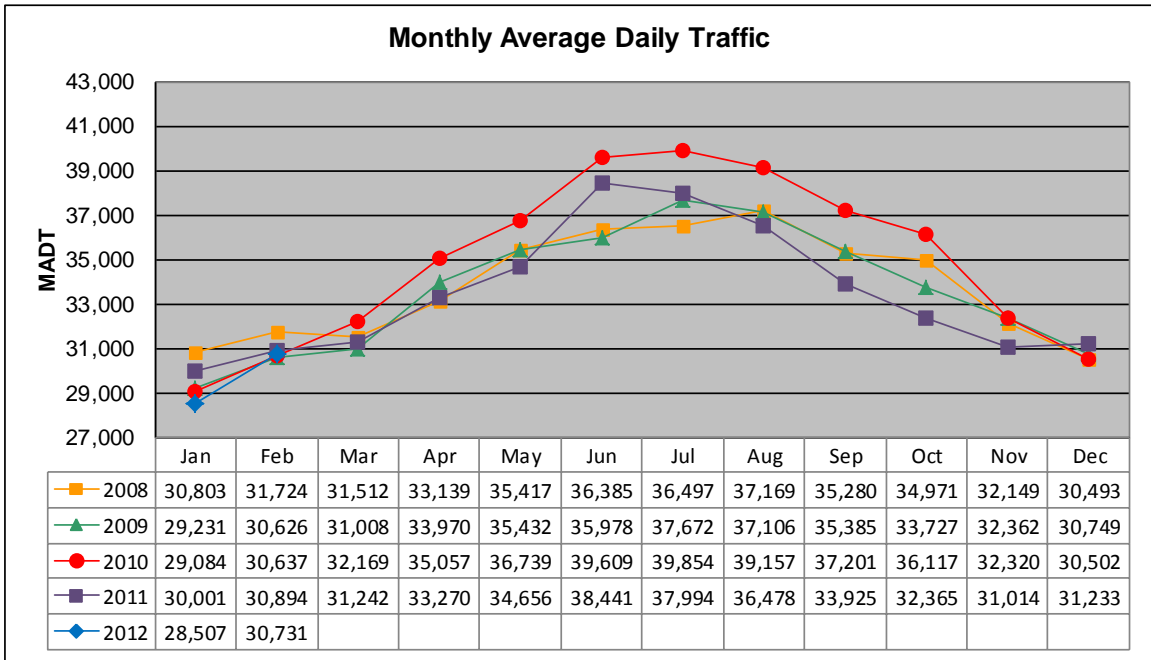


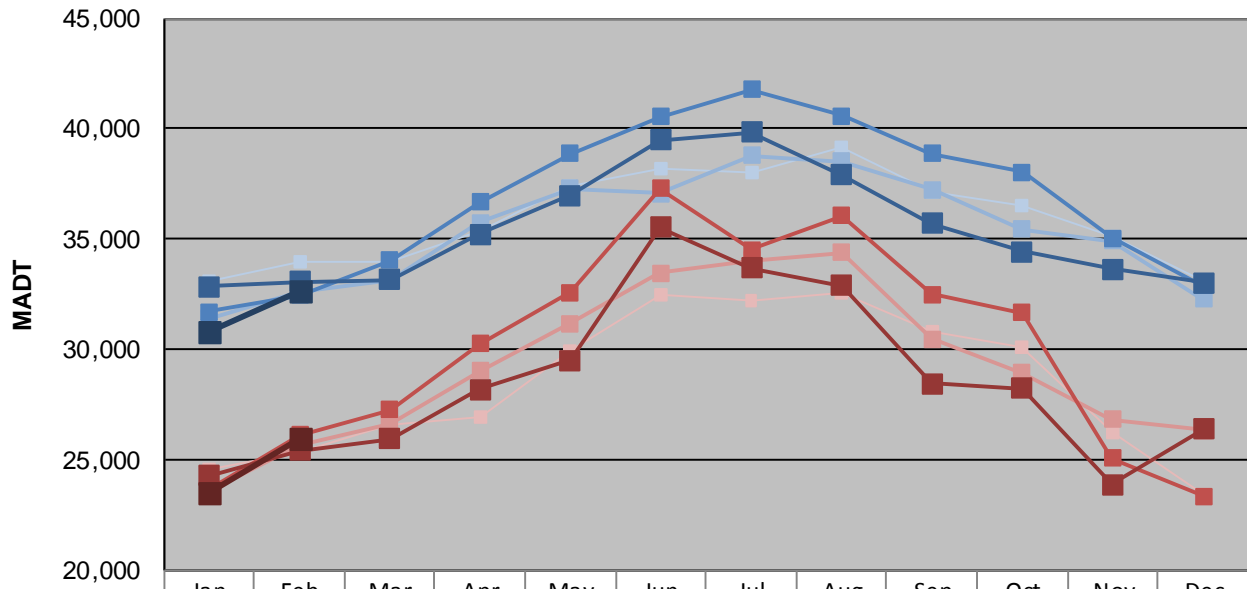
MONTHLY REPORT, STATION NO. 352 (ATR)

FEBRUARY 2012

Station Measurement: VOLUME/SPEED/CLASS		
Route: TH 10	Route Direction: E/W	Lanes: 4
County: Anoka		Closest City: Ramsey
Functional Class: Urban Principal Arterial - Other Freeways or Expressways		
Location: SE OF MSAS112 (153RD AVE NW) IN RAMSEY		
Ref Post: 218+00.450	True Mile: 220.364	Sequence No. 6790
Volume: 891,185		MADT: 30,731
Weekday (M-F) MADT: 32,680		Weekend (Sa-Su) MADT: 25,952



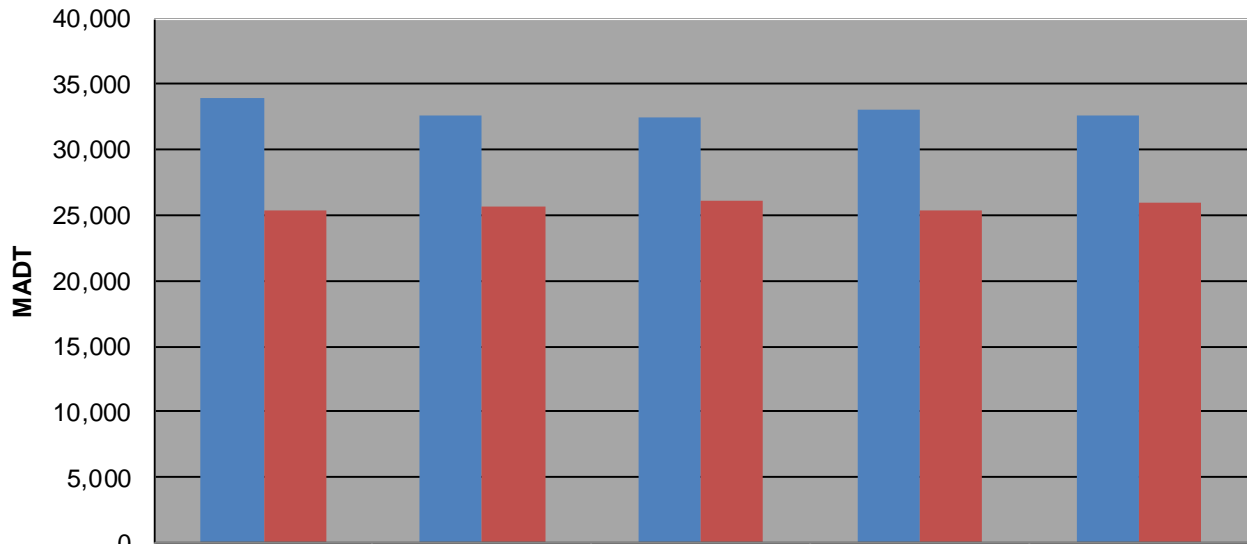
Weekday (WD)/Weekend (WE) Monthly Average Daily Traffic



	Jan	Feb	Mar	Apr	May	Jun	Jul	Aug	Sep	Oct	Nov	Dec
'08 WD	33,080	33,976	33,950	35,408	37,440	38,198	37,988	39,190	37,106	36,522	35,116	33,052
'08 WE	24,554	25,384	26,602	26,964	29,888	32,484	32,222	32,538	30,802	30,066	26,214	23,394
'09 WD	31,406	32,622	33,092	35,768	37,284	37,072	38,782	38,498	37,238	35,450	34,918	32,268
'09 WE	23,558	25,636	26,628	29,020	31,164	33,482	34,044	34,366	30,478	28,950	26,810	26,348
'10 WD	31,686	32,454	34,012	36,664	38,860	40,528	41,758	40,604	38,880	38,056	35,052	32,900
'10 WE	23,590	26,096	27,256	30,264	32,566	37,300	34,538	36,072	32,512	31,652	25,056	23,326
'11 WD	32,838	33,070	33,170	35,230	36,998	39,476	39,832	37,920	35,690	34,410	33,626	33,024
'11 WE	24,266	25,426	25,924	28,194	29,520	35,522	33,698	32,898	28,444	28,232	23,876	26,364
'12 WD	30,834	32,680										
'12 WE	23,510	25,952										

Note: 'Weekday' defined as Monday-Friday, 'Weekend' defined as Saturday-Sunday

Weekday/Weekend Monthly Average Daily Traffic ('08-'12)



	Feb-08	Feb-09	Feb-10	Feb-11	Feb-12
Weekday	33,976	32,622	32,454	33,070	32,680
Weekend	25,384	25,636	26,096	25,426	25,952