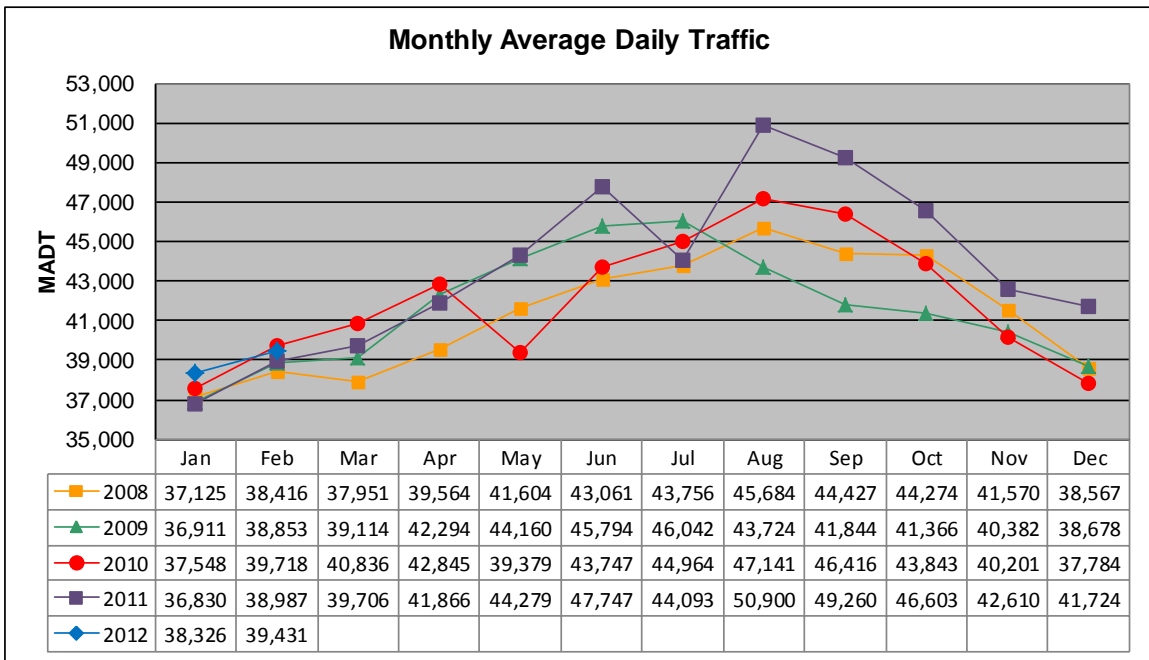


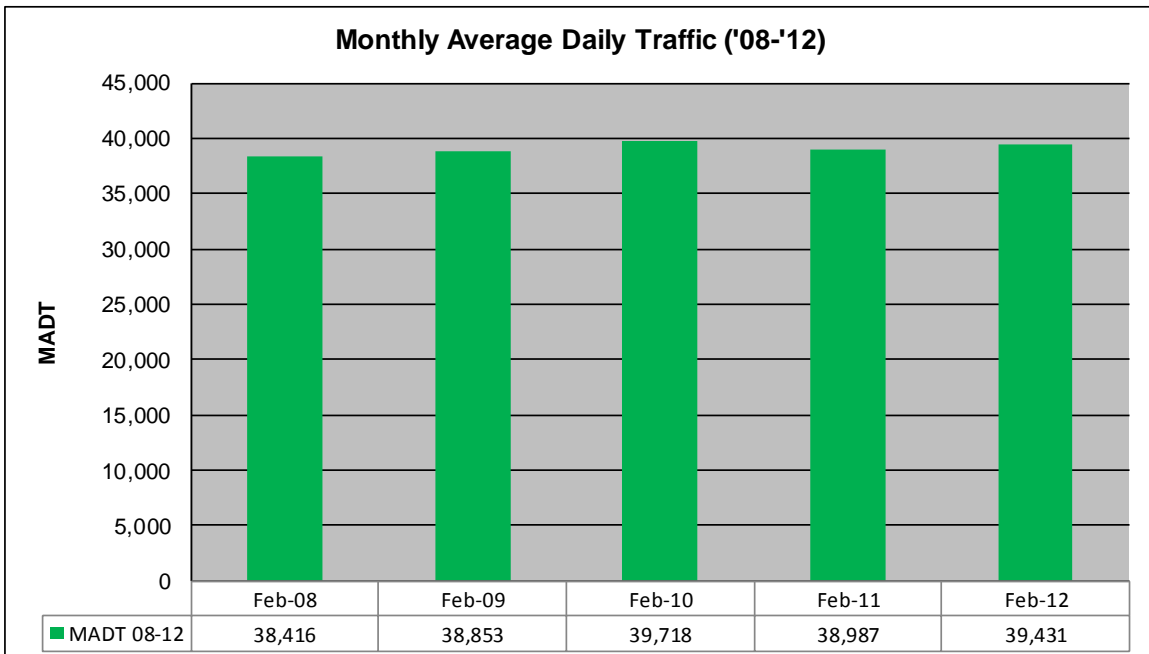
# MONTHLY REPORT, STATION NO. 335 (ATR)

## FEBRUARY 2012

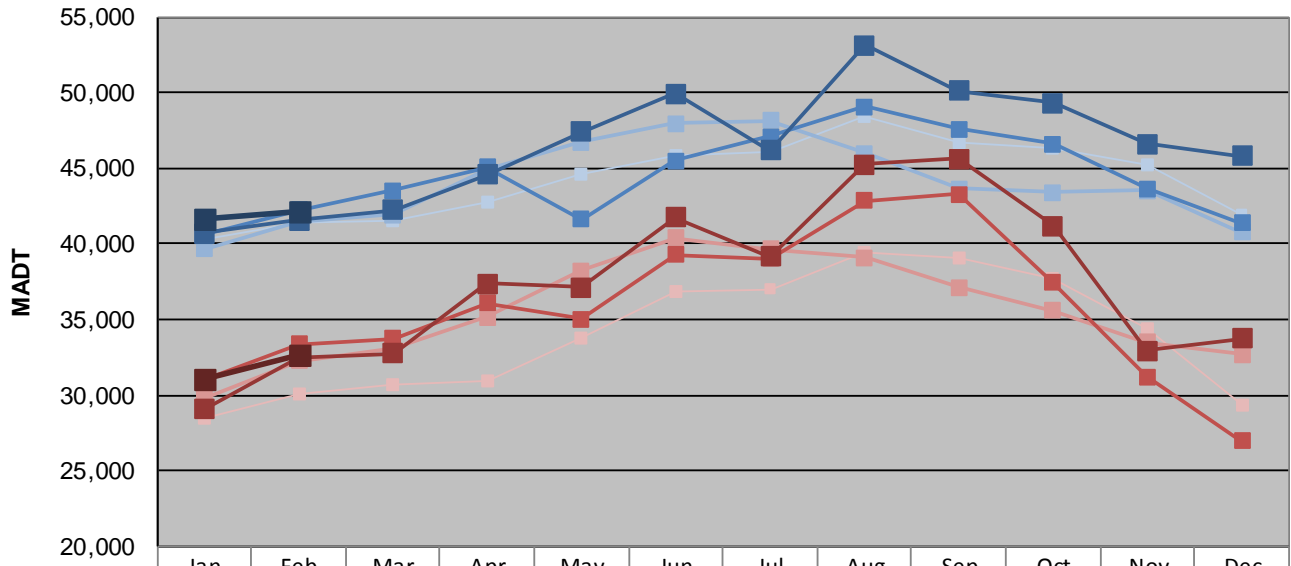
Station Measurement: VOLUME/SPEED/CLASS		
Route: I-35W	Route Direction: N/S	Lanes: 4
County: Anoka		Closest City: Blaine
Functional Class: Urban Principal Arterial - Interstate		
Location: W OF CR53 (SUNSET AVE NE) IN BLAINE		
Ref Post: 033+00.752	True Mile: 33.787	Sequence No. 9853
<b>Volume: 1,143,499</b>		<b>MADT: 39,431</b>
<b>Weekday (M-F) MADT: 42,196</b>		<b>Weekend (Sa-Su) MADT: 32,666</b>



Note: Decrease in traffic 2008-2009 due to I-35W bridge collapse and construction ... Decrease in traffic May to July 2010 due to construction on I-35W and TH 62



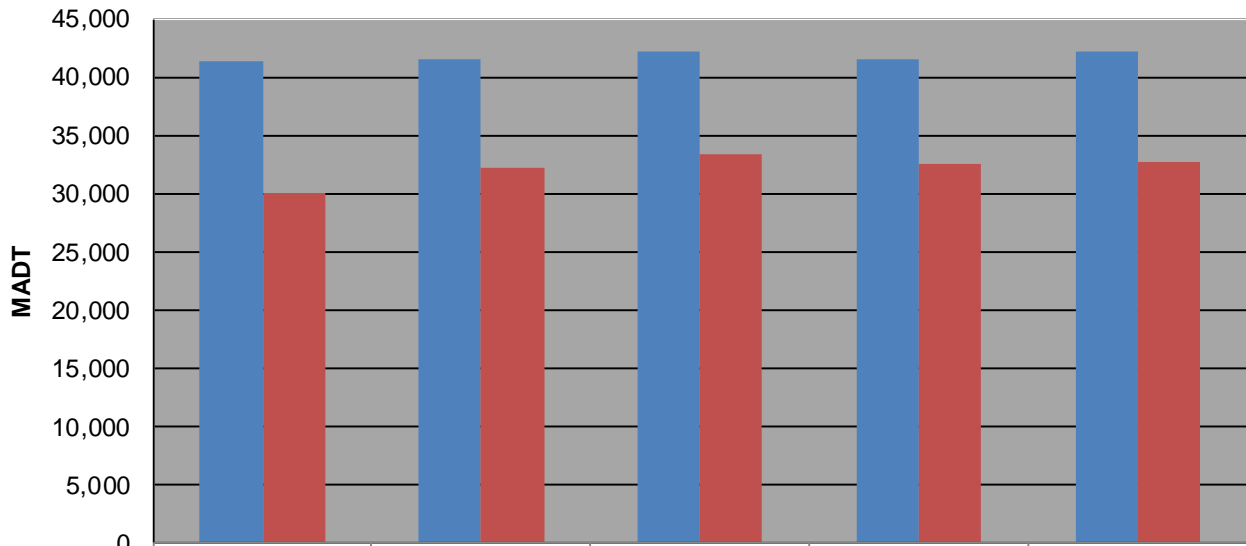
### Weekday (WD)/Weekend (WE) Monthly Average Daily Traffic



	Jan	Feb	Mar	Apr	May	Jun	Jul	Aug	Sep	Oct	Nov	Dec
'08 WD	40,292	41,384	41,508	42,740	44,588	45,850	46,052	48,426	46,636	46,362	45,182	41,902
'08 WE	28,446	30,016	30,744	30,944	33,718	36,818	37,028	39,410	39,062	37,666	34,348	29,302
'09 WD	39,646	41,488	41,898	44,930	46,754	47,972	48,132	46,006	43,662	43,424	43,550	40,760
'09 WE	29,806	32,266	33,050	35,174	38,236	40,400	39,630	39,120	37,108	35,610	33,478	32,662
'10 WD	40,586	42,264	43,504	45,094	41,604	45,482	47,090	49,082	47,574	46,578	43,642	41,390
'10 WE	31,026	33,350	33,728	36,054	35,008	39,260	39,006	42,870	43,258	37,456	31,236	26,948
'11 WD	40,682	41,564	42,248	44,598	47,404	49,926	46,192	53,158	50,092	49,298	46,618	45,802
'11 WE	29,056	32,520	32,750	37,364	37,100	41,764	39,150	45,242	45,642	41,214	32,938	33,750
'12 WD	41,650	42,196										
'12 WE	31,082	32,666										

Note: 'Weekday' defined as Monday-Friday, 'Weekend' defined as Saturday-Sunday

### Weekday/Weekend Monthly Average Daily Traffic ('08-'12)



	Feb-08	Feb-09	Feb-10	Feb-11	Feb-12
Weekday	41,384	41,488	42,264	41,564	42,196
Weekend	30,016	32,266	33,350	32,520	32,666