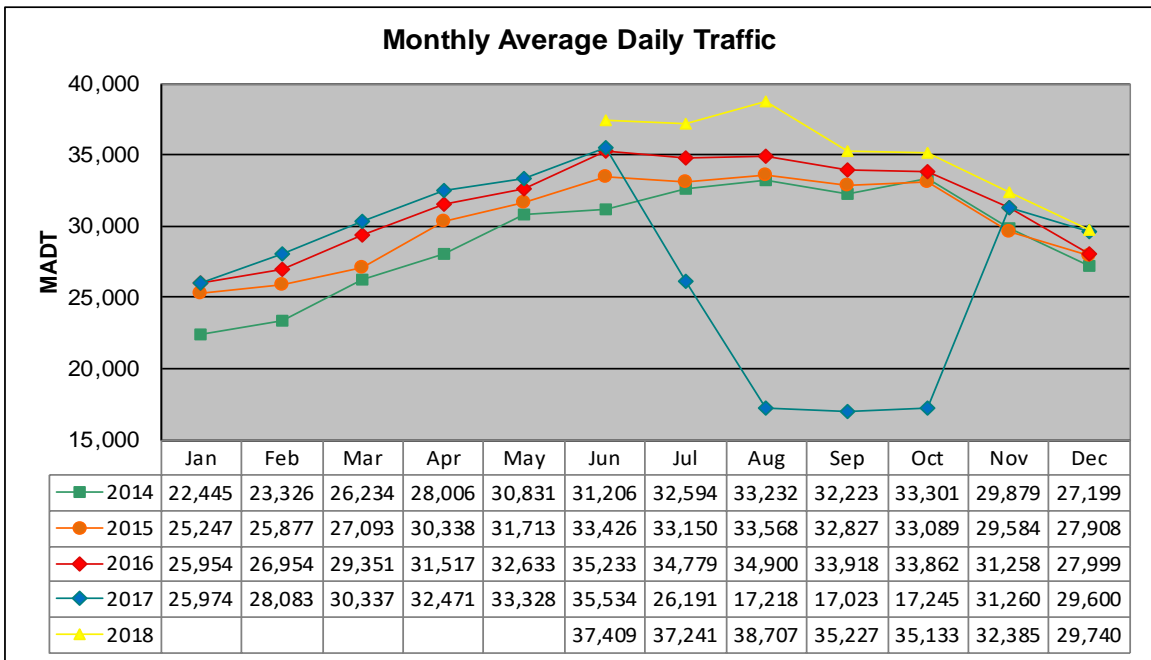


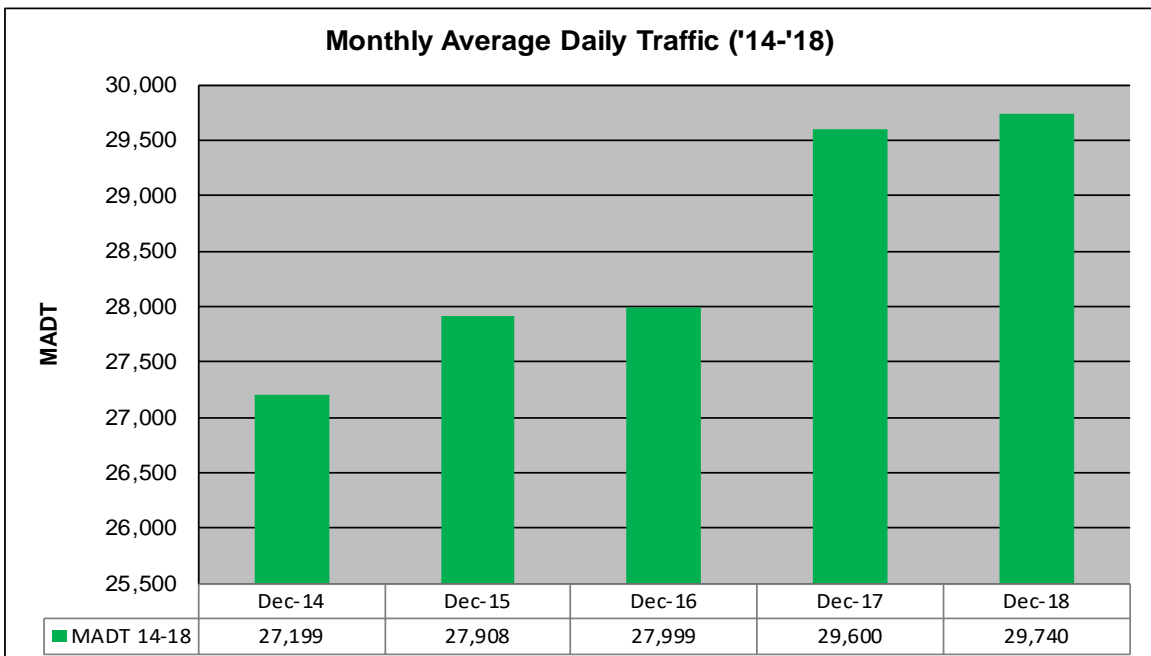
# MONTHLY REPORT, STATION NO. 382 (ATR)

## DECEMBER 2018

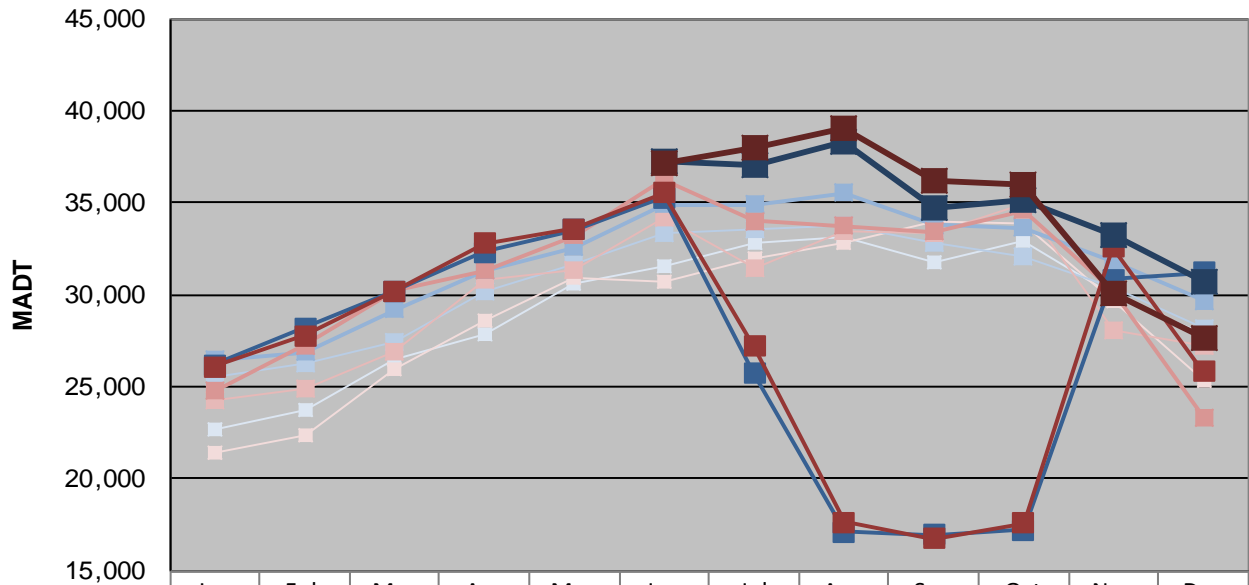
Station Measurement: VOLUME/SPEED/CLASS		
Route: TH 52	Route Direction: N/S	Lanes: 4
County: Dakota		Closest City: Coates
Functional Class: Rural Principal Arterial - Other		
Location: N OF 180TH ST E, S OF COATES		
Ref Post: 111+00.966	True Mile: 112.328	Sequence No. 9871
<b>Volume: 921,948* (26 days)</b>		<b>MADT: 29,740</b>
<b>Weekday (M-F) MADT: 30,758</b>		<b>Weekend (Sa-Su) MADT: 27,602</b>



Note: No data available from January to May 2018... Decrease in traffic July to October 2017 due to construction on TH 52



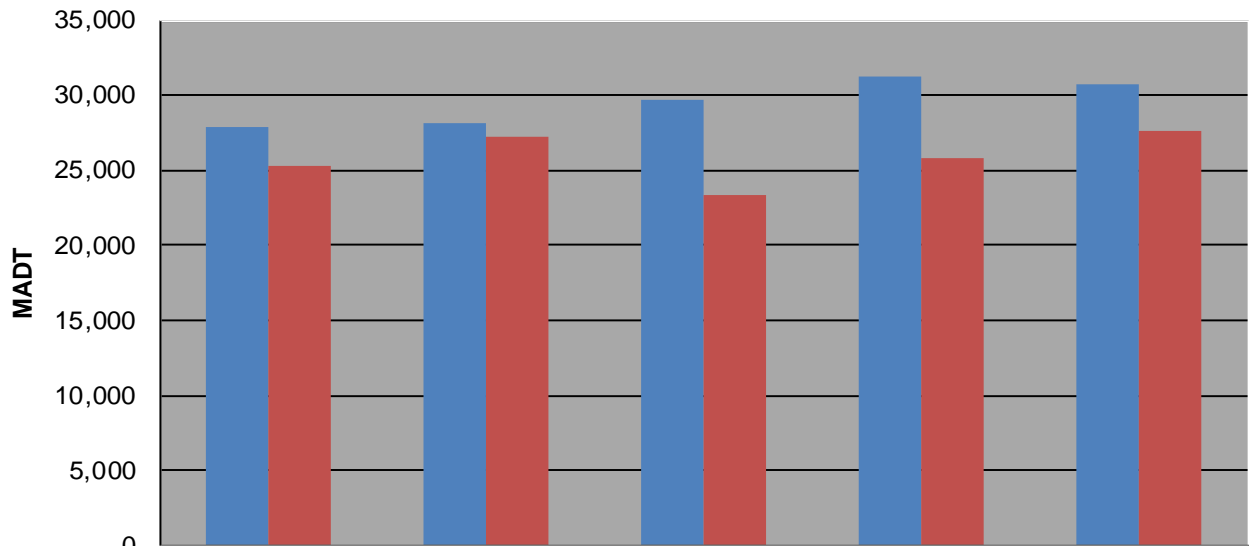
### Weekday (WD)/Weekend (WE) Monthly Average Daily Traffic



	Jan	Feb	Mar	Apr	May	Jun	Jul	Aug	Sep	Oct	Nov	Dec
'14 WD	22,682	23,712	26,464	27,906	30,548	31,534	32,858	33,178	31,724	32,884	29,970	27,902
'14 WE	21,382	22,362	25,946	28,616	30,936	30,712	31,974	32,844	34,018	33,924	29,698	25,290
'15 WD	25,520	26,260	27,426	30,184	31,662	33,334	33,574	33,744	32,810	32,048	30,418	28,212
'15 WE	24,230	24,918	26,944	30,854	31,342	34,210	31,408	33,438	33,350	34,906	28,090	27,210
'16 WD	26,438	26,878	29,228	31,288	32,584	34,904	34,884	35,522	33,798	33,634	31,778	29,700
'16 WE	24,782	27,256	30,220	31,290	33,216	36,228	34,022	33,760	33,448	34,610	30,262	23,352
'17 WD	26,220	28,210	30,200	32,308	33,508	35,280	25,744	17,114	16,976	17,212	30,830	31,210
'17 WE	26,062	27,766	30,210	32,796	33,588	35,552	27,176	17,652	16,762	17,574	32,564	25,826
'18 WD						37,276	37,064	38,324	34,746	35,156	33,243	30,758
'18 WE						37,188	38,008	39,088	36,192	35,938	30,058	27,602

Note: 'Weekday' defined as Monday-Friday, 'Weekend' defined as Saturday-Sunday

### Weekday/Weekend Monthly Average Daily Traffic ('14-'18)



	Dec-14	Dec-15	Dec-16	Dec-17	Dec-18
Weekday	27,902	28,212	29,700	31,210	30,758
Weekend	25,290	27,210	23,352	25,826	27,602